

AGRICULTURAL TO DWELLING - DC/20/01832

CONDITION 4 - WILDLIFE SENSITIVE LIGHTING SCHEME.

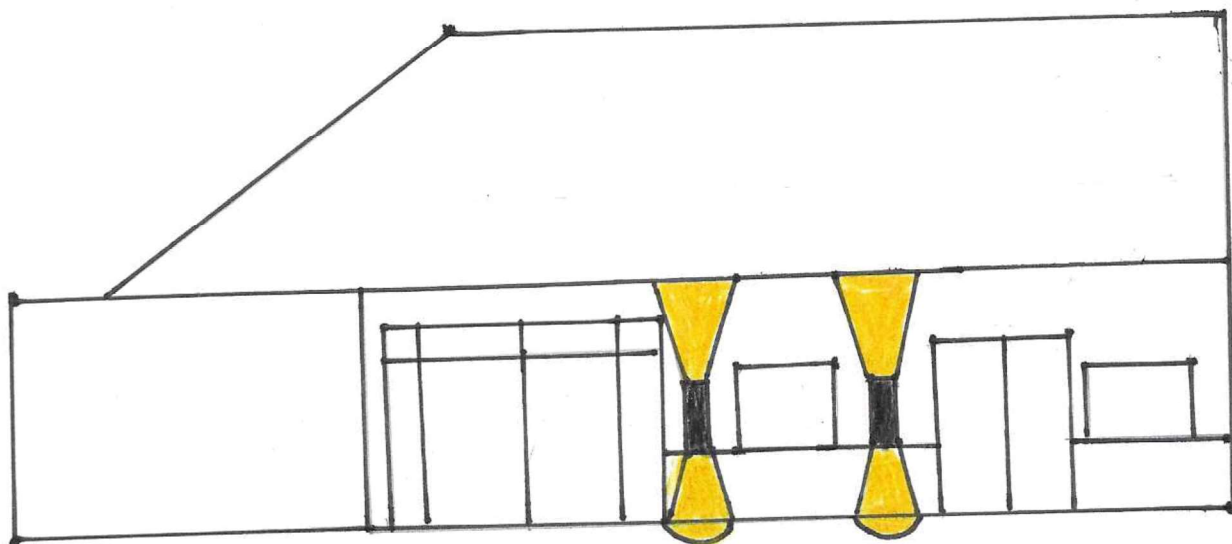
Please refer to the plans attached with this proposal.

The purpose of the up and down lights is to prevent any bright light being reflected on to Bat territories, Barn owls, Birds and other wildlife.

There will be no light reflected on to hedgerows, trees or possible habitats for various wildlife.

The light will only be reflected straight up or straight down stopping at the guttering and the ground. Leaving a soft circular light on either surface.

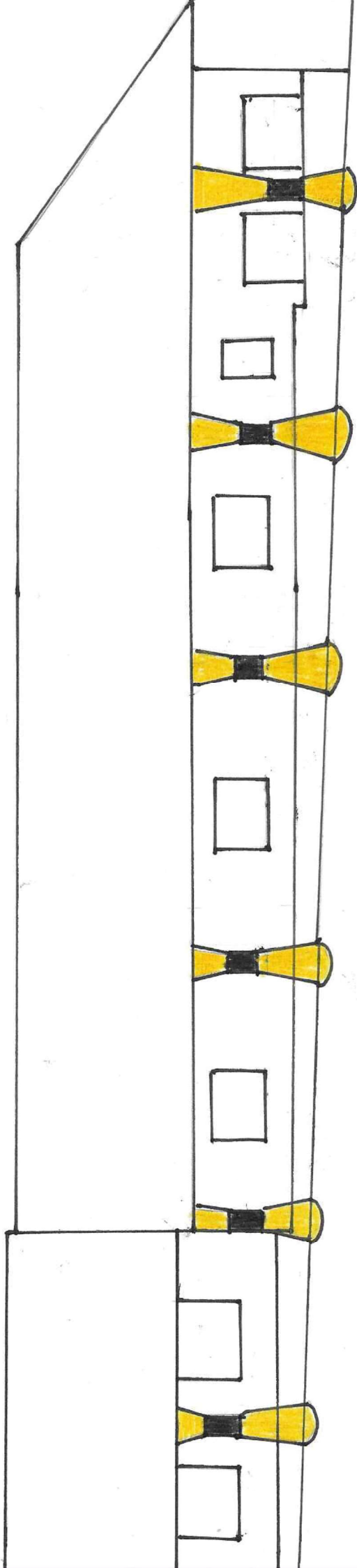
Dwelling 1 (Barn) Front
elevation facing south west



Proposal for wildlife sensitive lighting scheme.

Two up and down lights placed between the windows and doors. The lights reflect up under the guttering and straight down onto the ground. Leaving a soft circular light on either surface.

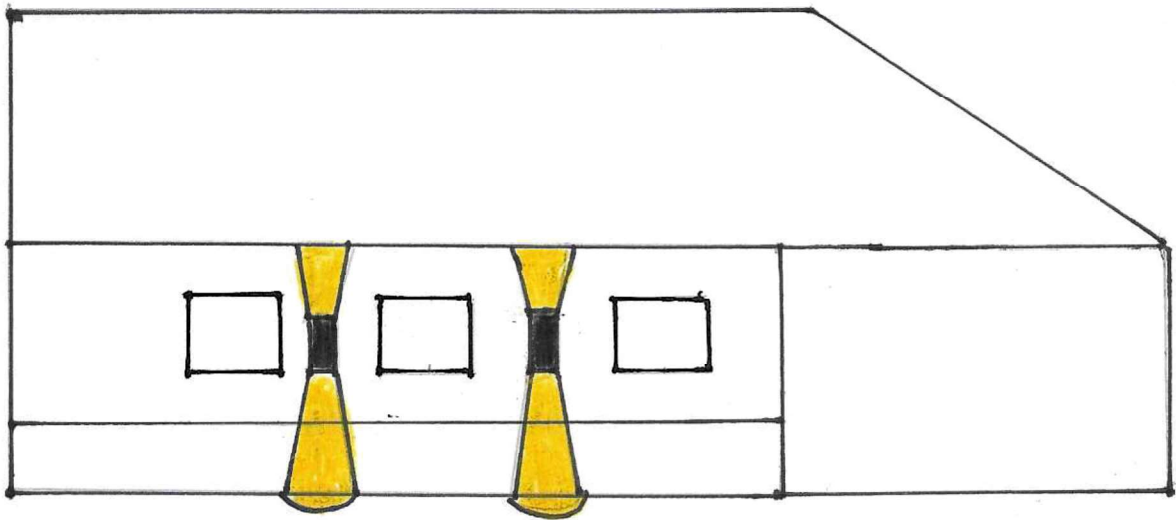
Dwelling 1 (Barn) Side elevation
facing north west.



Proposal for wildlife sensitive lighting scheme.

Six up and down lights placed between windows. The light reflects up and under the guttering and straight down onto the ground. Leaving a soft circular light on either surface.

Dwelling 1 (Barn) Back
elevation facing north east.
Proposal for wildlife sensitive
lighting scheme.

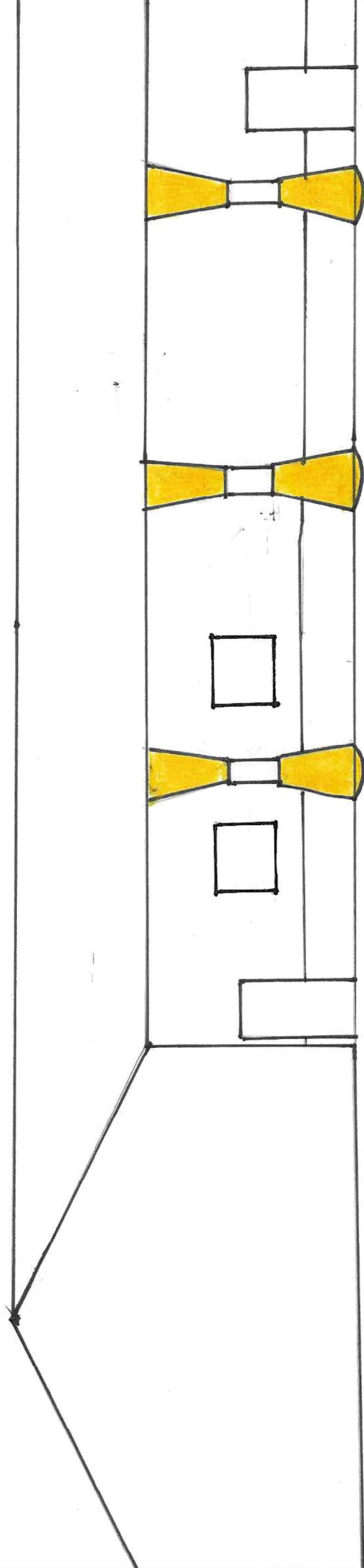


Two up and down lights placed
between the windows. The light
reflects up under the guttering and
straight down onto the ground. Leaving a
soft circular light on either surface.

Dwelling 1 (Barn) Side elevation

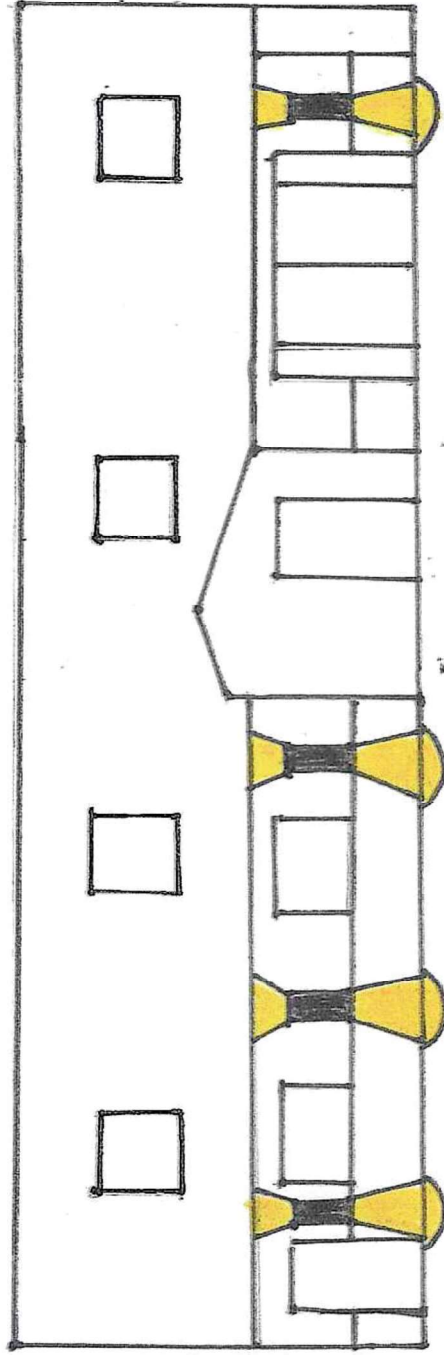
facing south east.

Proposal for wildlife sensitive lighting scheme.



Three up and down lights placed between the windows and doors. The light reflects up under the guttering and straight down onto the ground. Leaving a soft circular light on either surface.

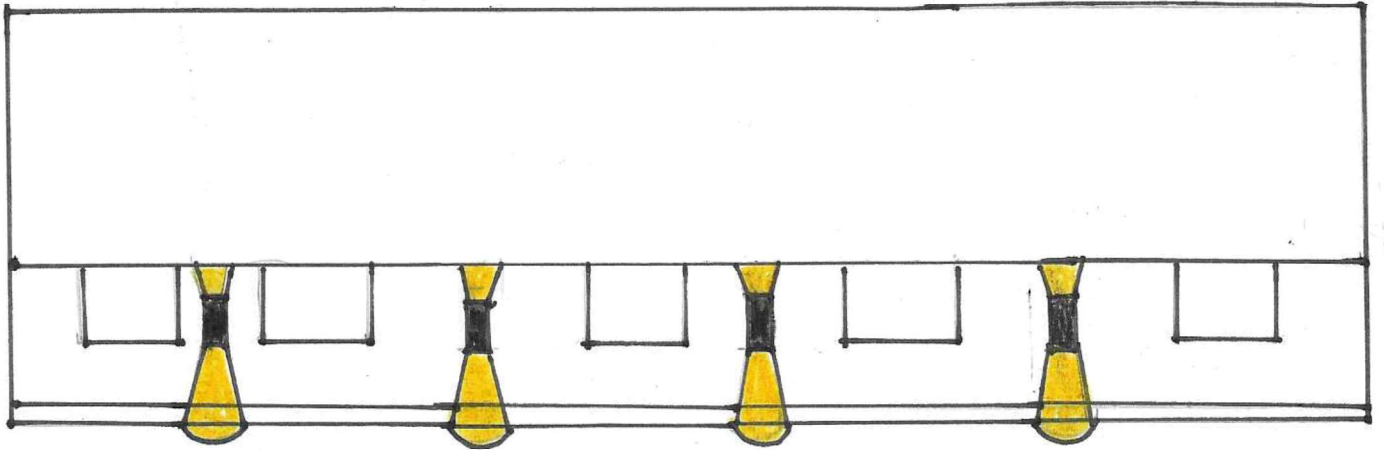
Dwelling 2 (Cottage) Front elevation facing south east.
Proposal for wildlife sensitive lighting
scheme.



Four up and down lights placed
between the windows and doors.

The lights reflect up under the
guttering and straight down onto
the ground, leaving a soft circular light

Dwelling 2 (Cottage) Back
elevation facing north west.



Proposal for wildlife sensitive lighting scheme.

Four up and down lights placed between the windows. The lights reflect up under the guttering and straight down onto the ground. Leaving a soft circular light on either surface.