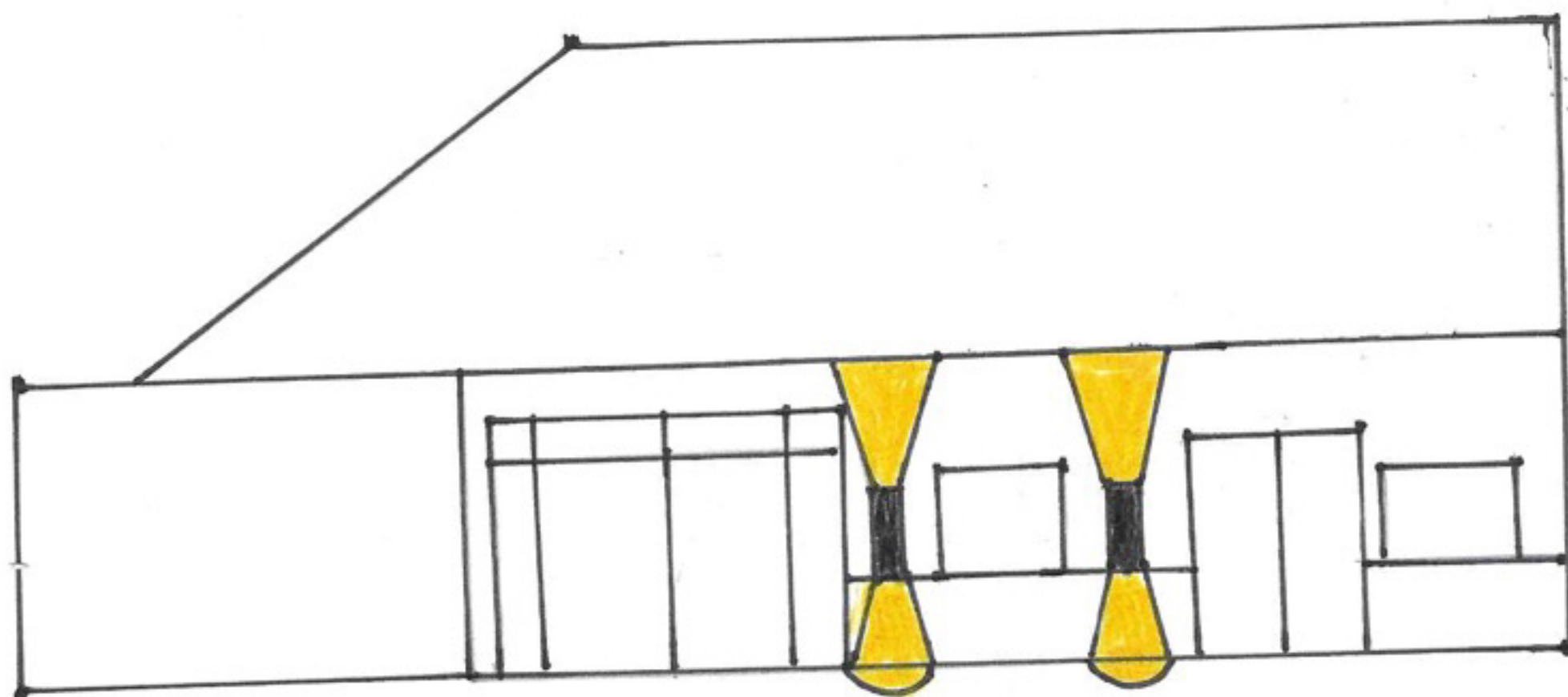


The small yellow circles are the up and down lights

The large green circles are where the trees are where bats could possibly roost.

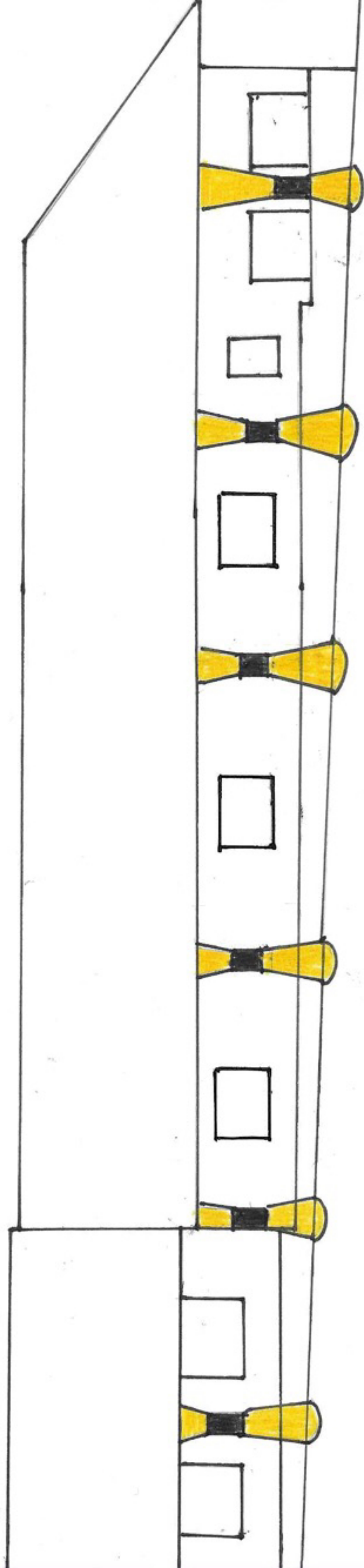
Dwelling 1 (Barn) Front  
elevation facing south west



Proposal for wildlife sensitive lighting scheme.

Two up and down lights placed between the windows and doors. The lights reflect up under the guttering and straight down onto the ground. Leaving a soft circular light on either surface.

Dwelling 1 (Barn) Side elevation  
facing north west.

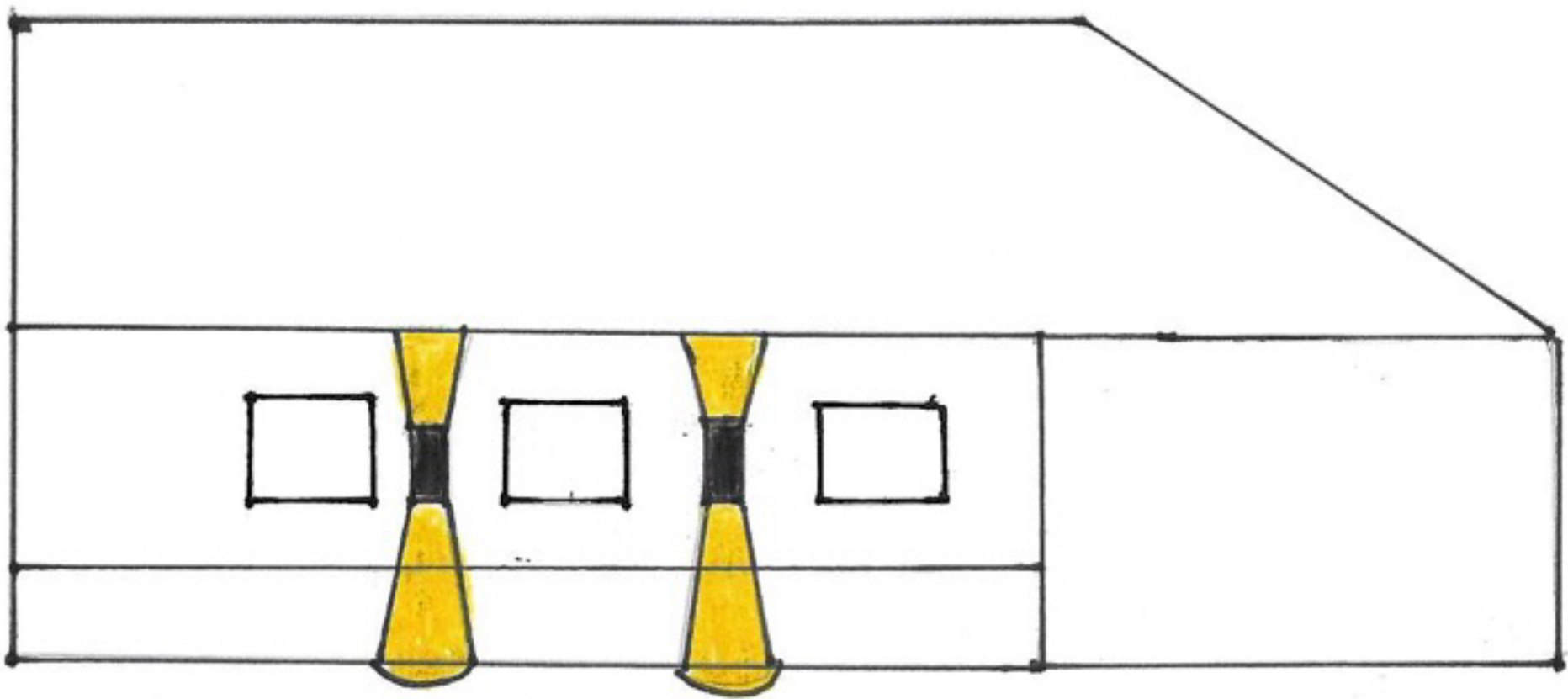


Proposal for wildlife sensitive lighting scheme.

Six up and down lights placed between windows. The light reflects up and under the guttering and straight down onto the ground. Leaving a soft circular light on either surface.



Dwelling 1 (Barn) Back  
elevation facing north east.  
Proposal for wildlife sensitive  
lighting scheme.

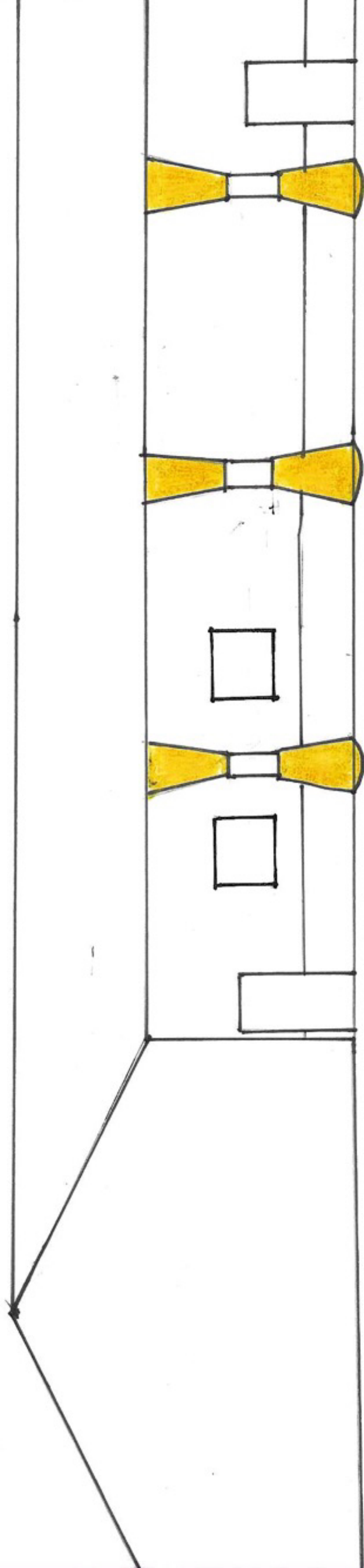


Two up and down lights placed  
between the windows. The light  
reflects up under the guttering and  
straight down onto the ground. Leaving a  
soft circular light on either surface.

Dwelling 1 (Barn) Side elevation

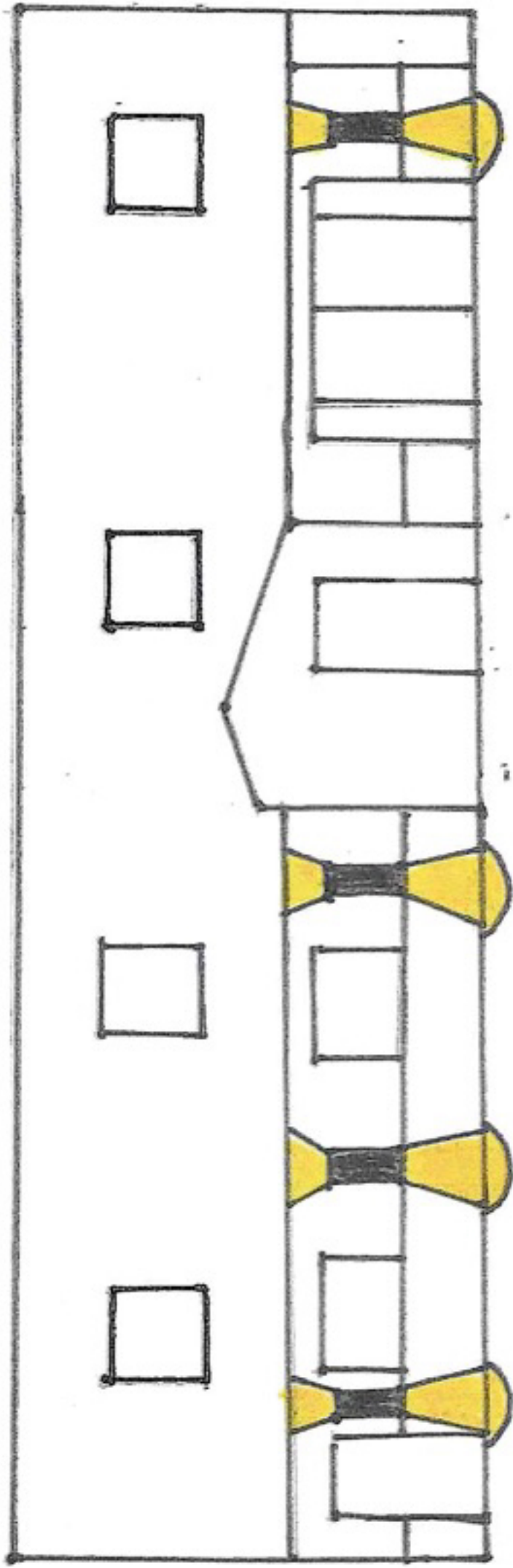
facing south east.

Proposal for wildlife sensitive lighting scheme.



Three up and down lights placed between the windows and doors. The light reflects up under the guttering and straight down onto the ground. Leaving a soft circular light on either surface.

Dwelling 2 (Cottage) Front elevation facing south east.  
Proposal for wildlife sensitive lighting  
scheme.

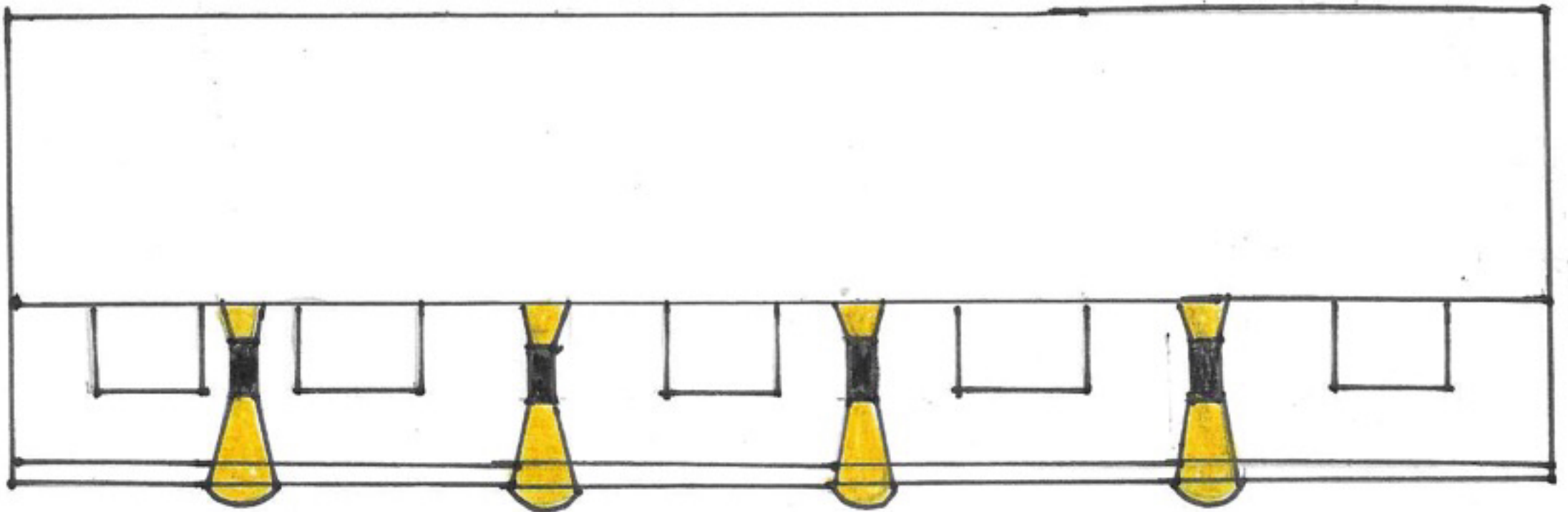


Four up and down lights placed  
between the windows and doors.

The lights reflect up under the  
guttering and straight down onto  
the ground, leaving a soft circular light



Dwelling 2 (Cottage) Back  
elevation facing north west.



Proposal for wildlife sensitive lighting scheme.

Four up and down lights placed between the windows. The lights reflect up under the guttering and straight down onto the ground. Leaving a soft circular light on either surface.