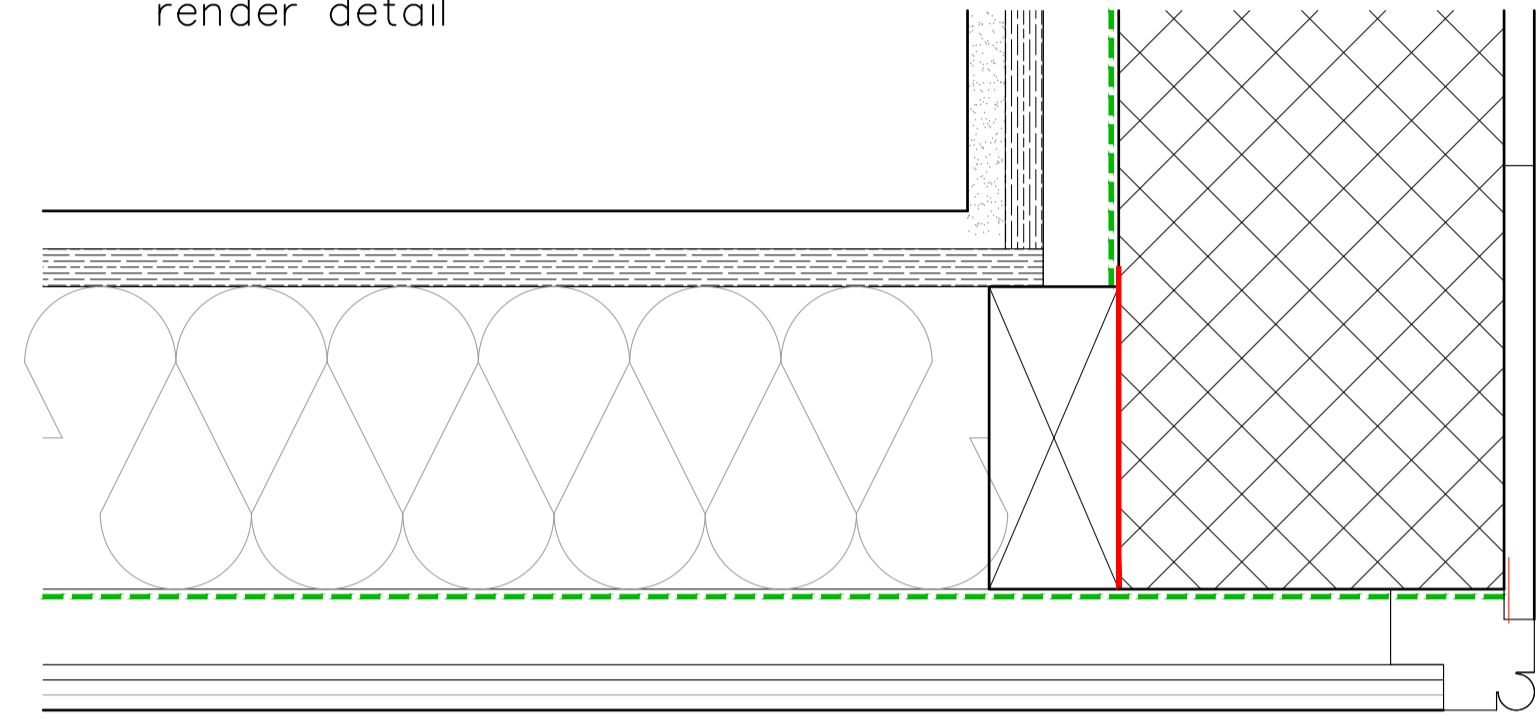
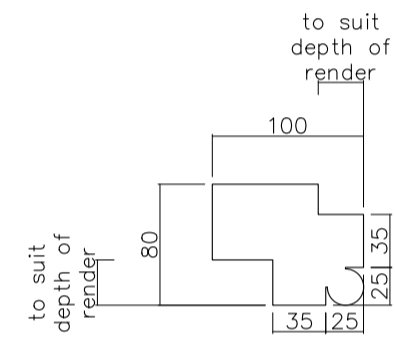


Plan of lime render to lime render detail

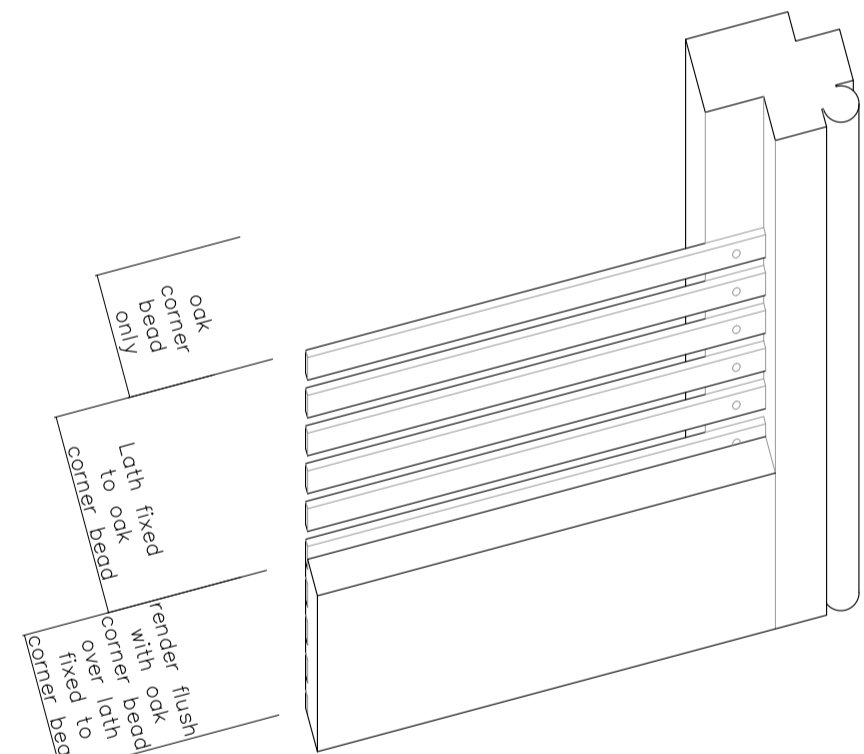


Plan of lime render to existing cement render detail

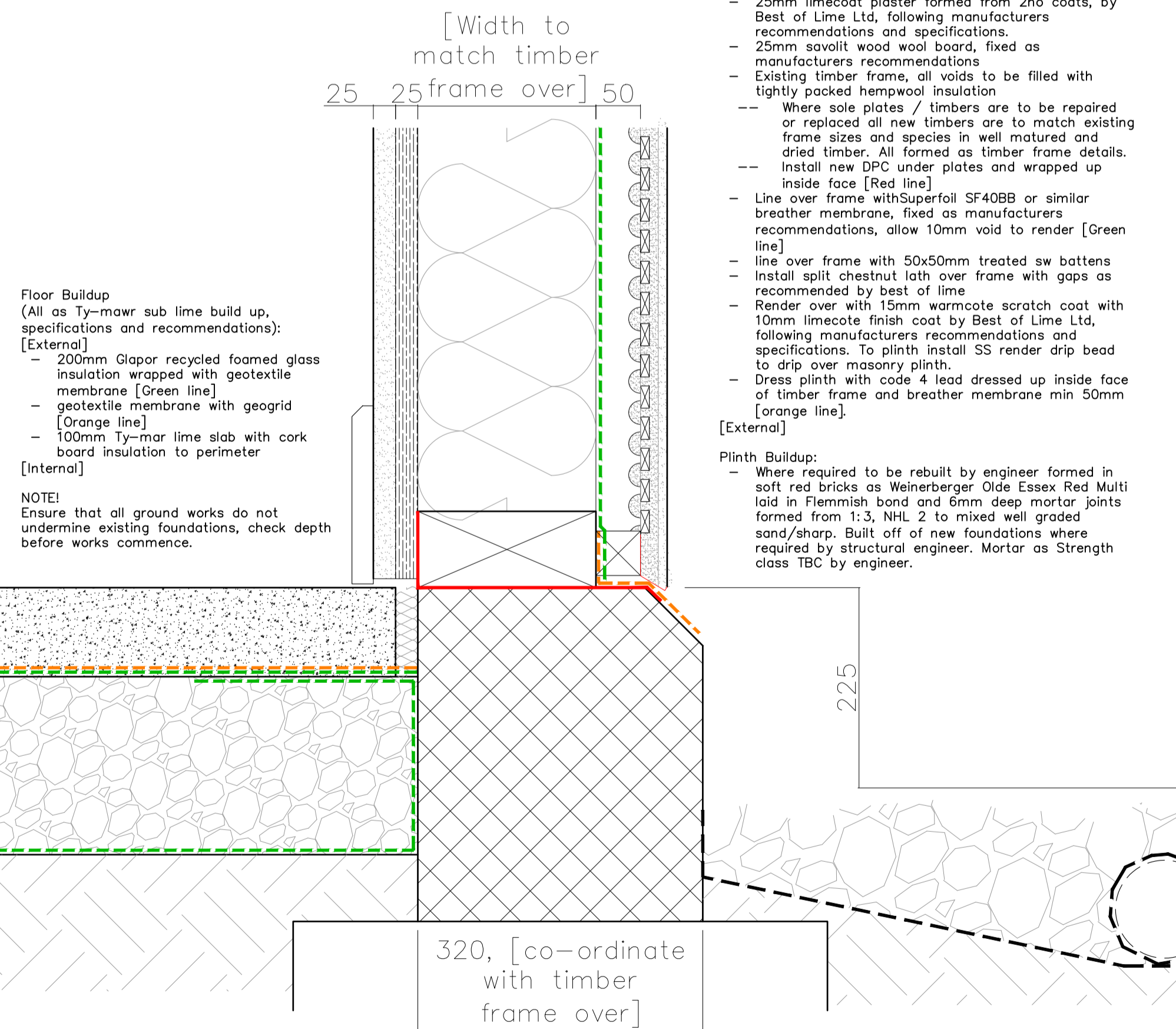


**Oak Corner detail**

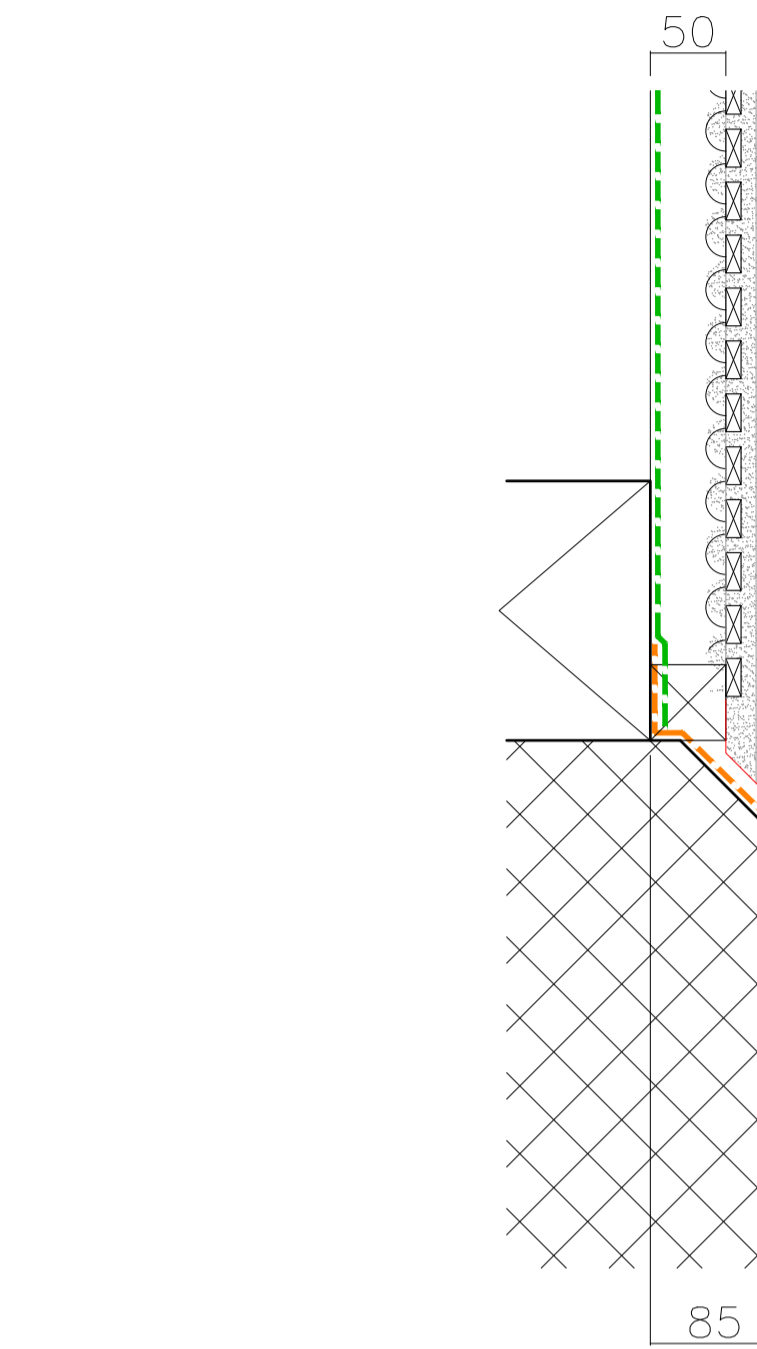
- To corners install new oak profiled corner beads:
- Finished sized 100x80mm kiln dried oak.
  - Rebated channels to lath to allow for SS screw fixing of lath to corner bead for corner stability, depth to suit overall depth of lath and render so oak and render are flush finished.
  - Pencil moulding to corner
  - Where fixing to cement render to gable cut back and render upto rebated bead, install 10mm nylon reinforcement mesh min 300mm wide over existing wall.
  - Fixed corner bead securely back to timber frame



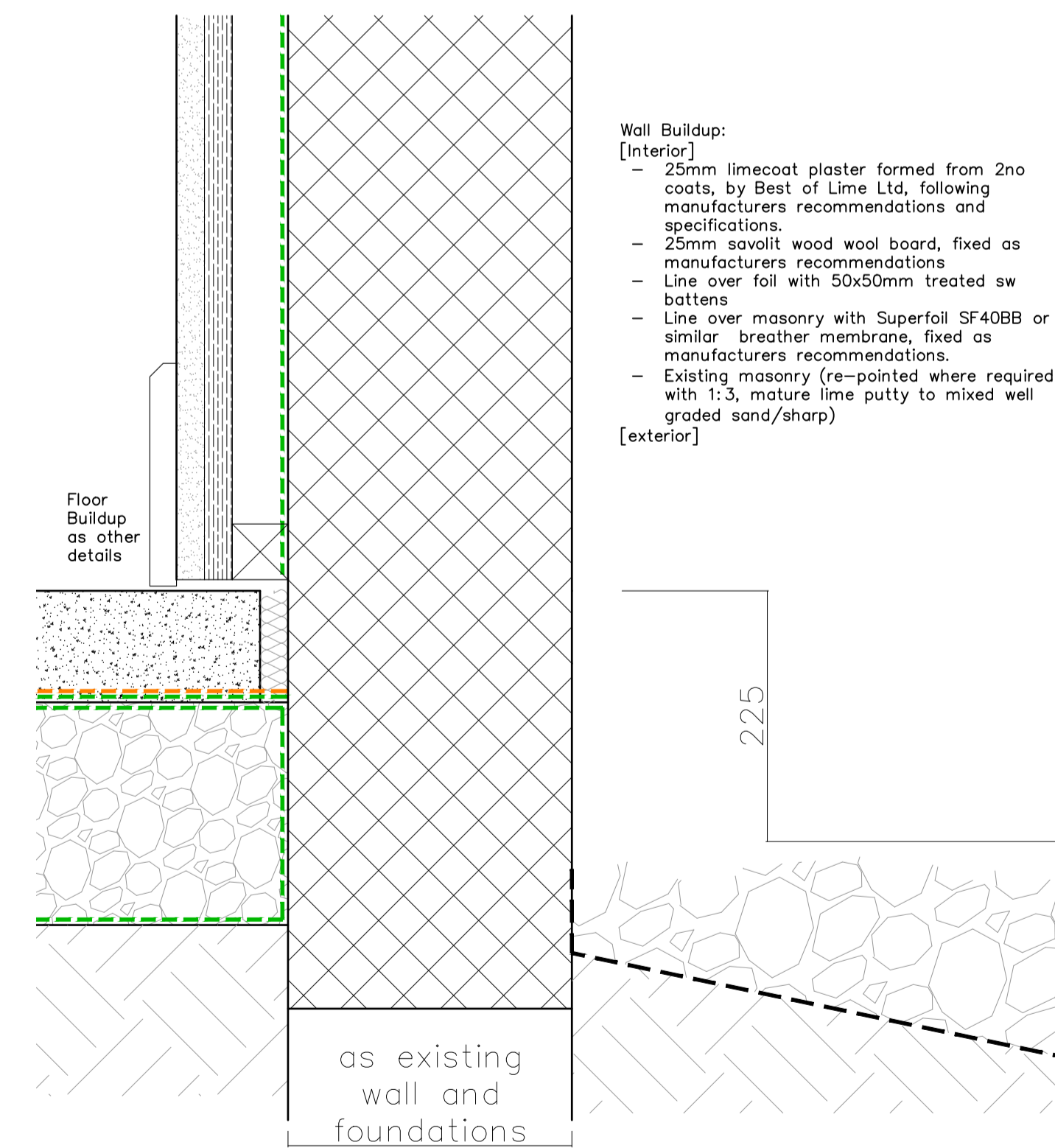
Oak Corner bead 3D sketch NTS



Proposed floor and wall construction to timber frame elements

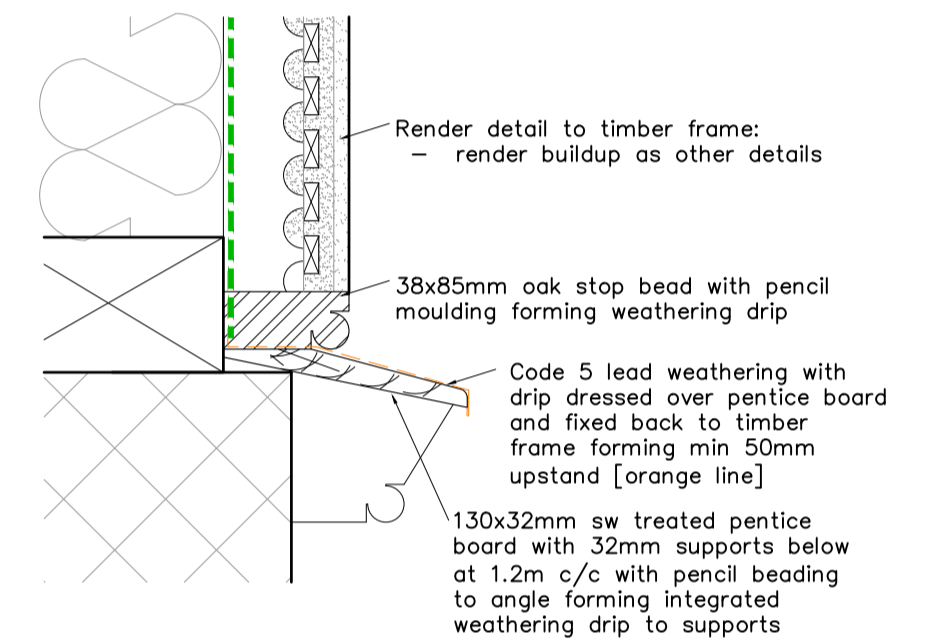


Proposed exterior wall lining to timber frame over ground floor masonry elements



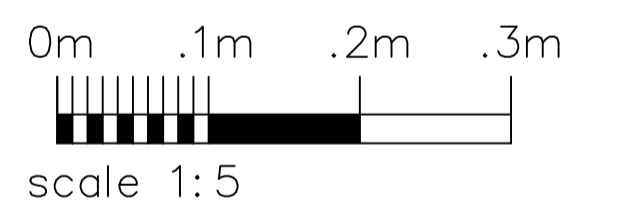
Proposed wall construction to Ground Floor masonry elements

- Wall Buildup:  
[Interior]
- 25mm limecoat plaster formed from 2no coats, by Best of Lime Ltd, following manufacturers recommendations and specifications.
  - 25mm savolit wood wool board, fixed as manufacturers recommendations
  - Existing timber frame, all voids to be filled with tightly packed hempwool insulation
  - Where sole plates are repaired or replace install new DPC under plate and wrapped up inside face [Red line]
  - Line over frame with Superfoil SF40BB or similar breather membrane, fixed as manufacturers recommendations, allow 10mm void to render [Green line]
  - line over frame with 50x50mm treated sw battens
  - Install split chestnut lath over frame with gaps as recommended by best of lime
  - Render over with 15mm warmcote scratch coat with 10mm limecote finish coat by Best of Lime Ltd, following manufacturers recommendations and specifications. To plinth install SS render drip bead to drip over masonry plinth.
  - Dress plinth with code 4 lead dressed up inside face of timber frame and breather membrane min 50mm [orange line]
- [External]



Pentice Board detail to gable wall

- Wall Buildup:  
[Interior]
- 25mm limecoat plaster formed from 2no coats, by Best of Lime Ltd, following manufacturers recommendations and specifications.
  - 25mm savolit wood wool board, fixed as manufacturers recommendations
  - Line over foil with 50x50mm treated sw battens
  - Line over masonry with Superfoil SF40BB or similar breather membrane, fixed as manufacturers recommendations
  - Existing masonry (re-pointed where required with 1:3, mature lime putty to mixed well graded sand/sharp)
- [external]



revision	description	date

Client: **Ms S Bagnall**

Job Title: **The Royal Oak, Monk Soham**

Drawing Title: **Timber Frame and Masonry Construction Details**

Scale: 1:5	Drawn By: A1 JM	Date: October 2021
Job Number: 6350	Drawing Number: 18	Status: Preliminary

**whitworth**

Chartered Architects & Chartered Building Surveyors  
18 Hatter Street, Bury St Edmunds, Suffolk, IP33 1NE  
01284 760421 info@whitworth.co.uk www.whitworth.co.uk

NOTE:  
Do not scale from this drawing. Confirm all dimensions on site. Refer any discrepancies to the Architect before work is put in hand. Read this drawing in conjunction with the relevant sections of the specification, schedule of works and other drawings.

This drawing is copyright of whitworth.