

*This drawing is COPYRIGHT. It must not be reproduced or disclosed to third parties without our prior permission. Do not scale from this drawing, or, interrogate and use electronic information.*

*Any discrepancies should be reported immediately.*

*Any surveyed information incorporated within this drawing cannot be guaranteed as accurate unless confirmed by a fixed dimension. All dimensions are in millimetres unless noted otherwise.*

Neighbouring property

Open public grass area

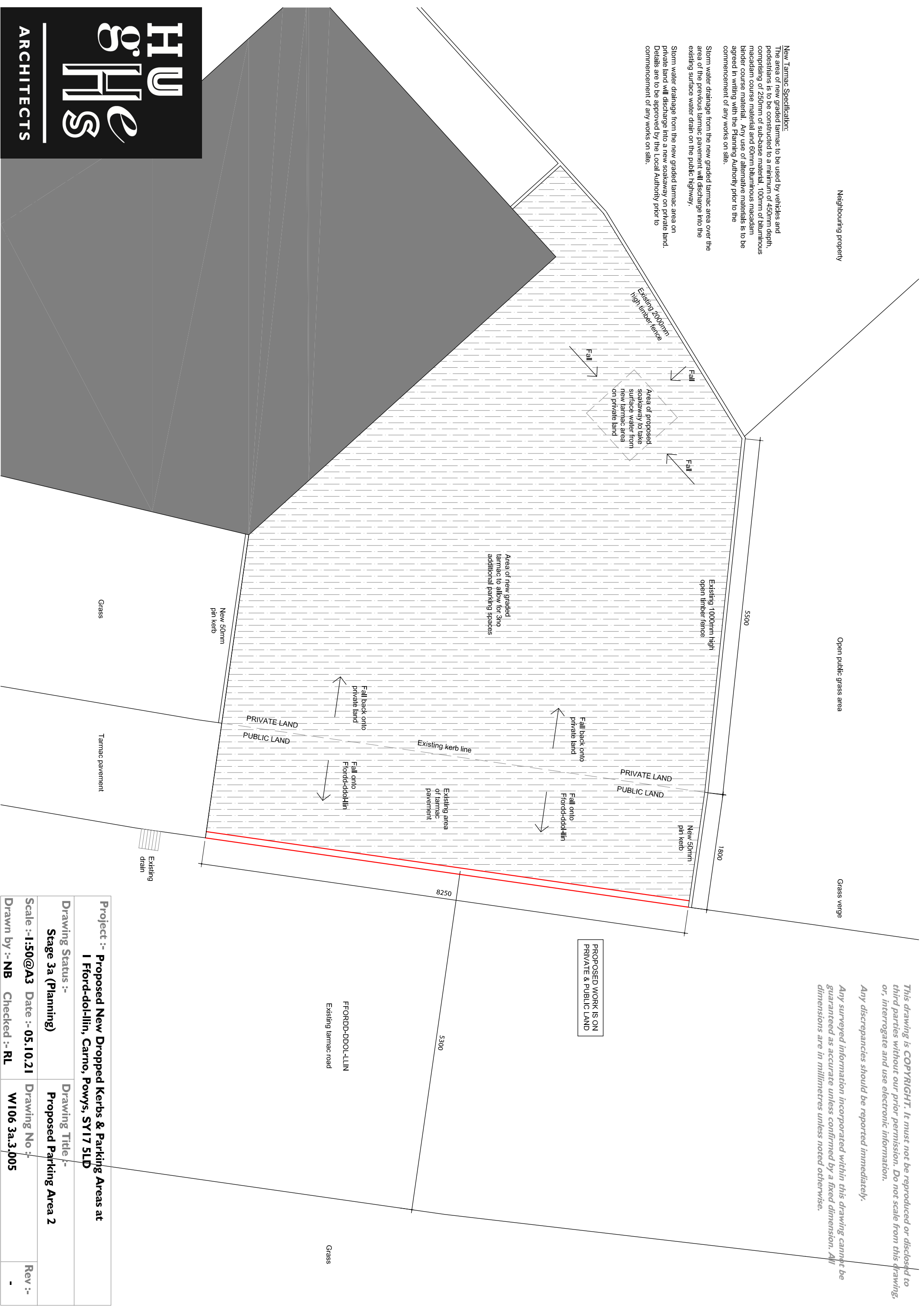
Grass verge

New Tarmac Specification:

The area of new graded tarmac to be used by vehicles and pedestrians is to be constructed to a minimum of 450mm depth, comprising of 250mm of sub-base material, 100mm of bituminous macadam course material and 50mm bituminous macadam binder course material. Any use of alternative materials is to be agreed in writing with the Planning Authority prior to the commencement of any works on site.

Storm water drainage from the new graded tarmac area over the area of the previous tarmac pavement will discharge into the existing surface water drain on the public highway.

Storm water drainage from the new graded tarmac area on private land will discharge into a new soakaway on private land. Details are to be approved by the Local Authority prior to commencement of any works on site.



<b>Project :- Proposed New Dropped Kerbs &amp; Parking Areas at I Ffordd-dol-lin, Carno, Powys, SY17 5LD</b>	
<b>Drawing Status :- Stage 3a (Planning)</b>	<b>Drawing Title :- Proposed Parking Area 2</b>
<b>Scale :- 1:50@A3</b>	<b>Date :- 05.10.21</b>
<b>Drawn by :- NB</b>	<b>Checked :- RL</b>
<b>Drawing No :- W106 3a.3.005</b>	<b>Rev :- -</b>