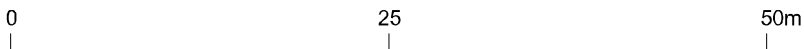
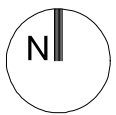




- Tree A - Lawsons Cypress - approx height 10-12m
- Tree B - Lawsons Cypress - approx height 10-12m
- Tree C - Crab Apple 'John Downie' - approx height 7m
- Tree D - Common Elder - approx height 5m

LOCATION PLAN - 1:500



Scale: 1:500 on A4 sheet

19 Bond Street, Stowmarket
Proposed tree removal