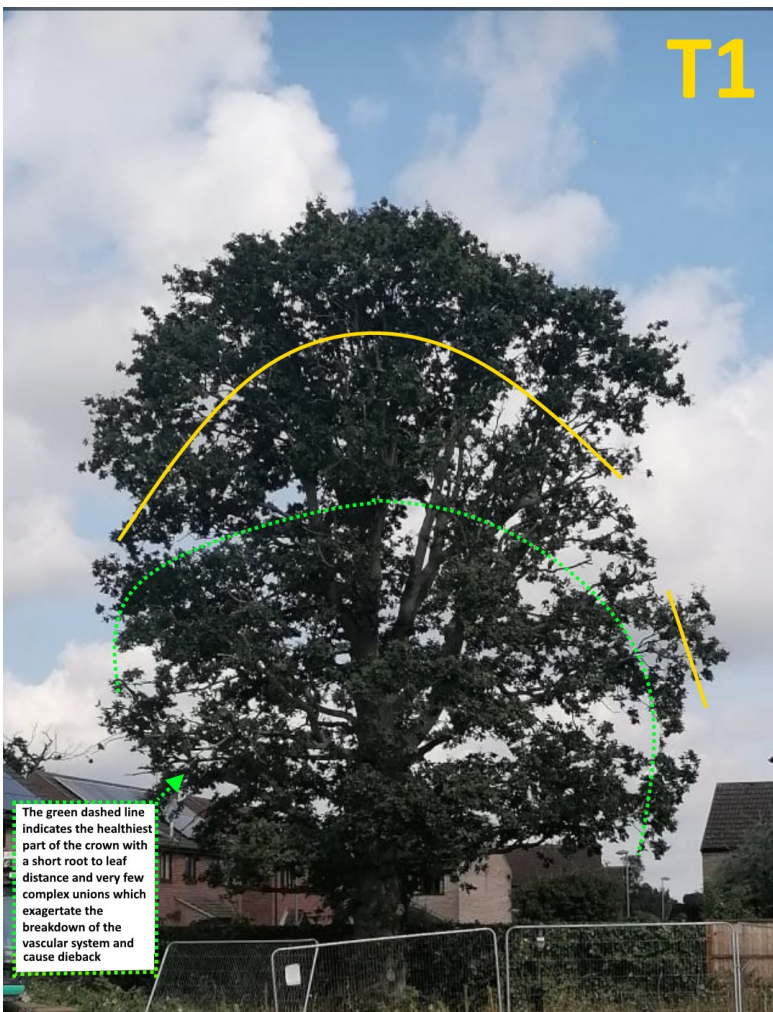
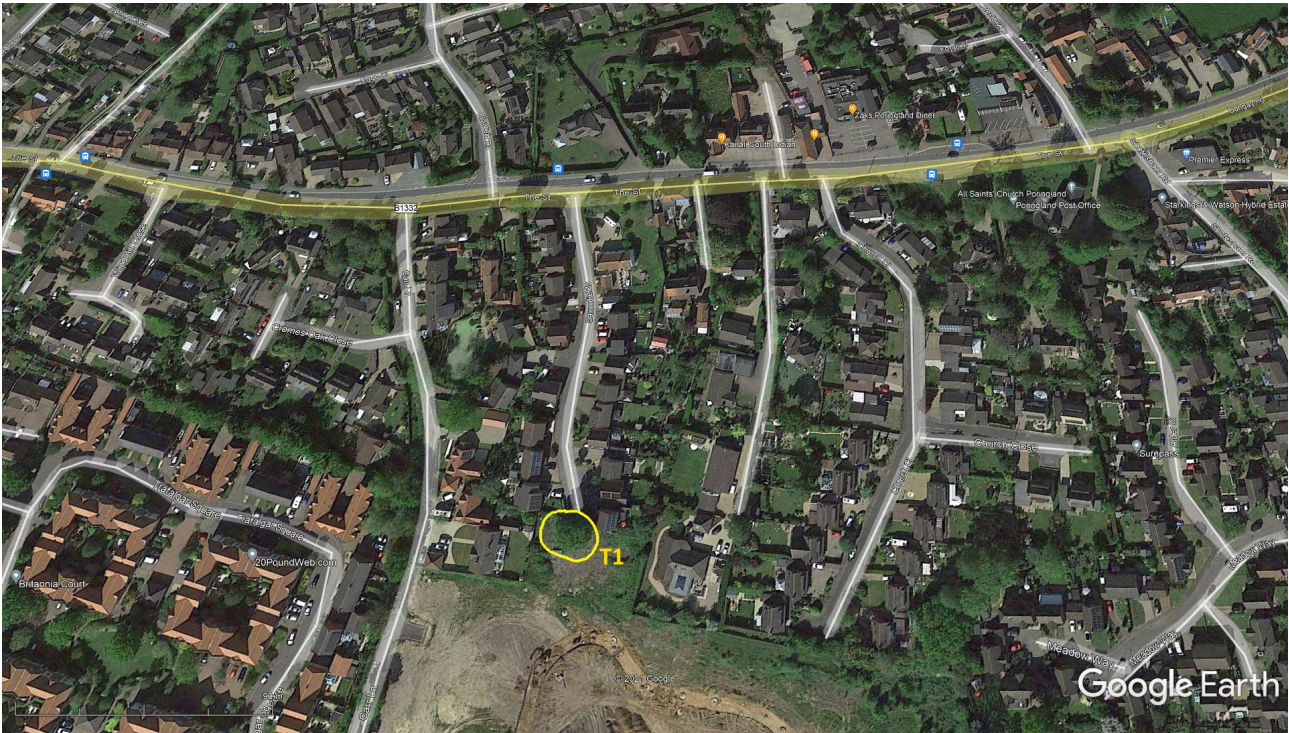


Ref:NHSF1

Location of Oak tree at the end of Saxonfields road T1



T1

T1 – Oak – Reduce to the yellow line. Removing between 1m and 3m from the crown as shown along with removing any dead wood.

The tree is in close proximity to existing dwelling and there is further development being carried out in a previous fallow area.

The Oak is suffering from average levels of dieback. Its branch architecture encouraging a relatively progressive decline. Aided by the strong lower crown growth giving half the crown a short root to leaf translocation distance. This has helped maintain some root and crown health (Some sugars getting to the roots and some water getting to the extremities)

The proposed reduction will help the tree to carry on retrenching. Leaving the tree structurally safe and with a notable presence. Along with a crown that the root system can currently sustain.