

Plot 34

GENERAL REFERENCES

- WA1 Wall number
- W1 Window number
- D1 Door number

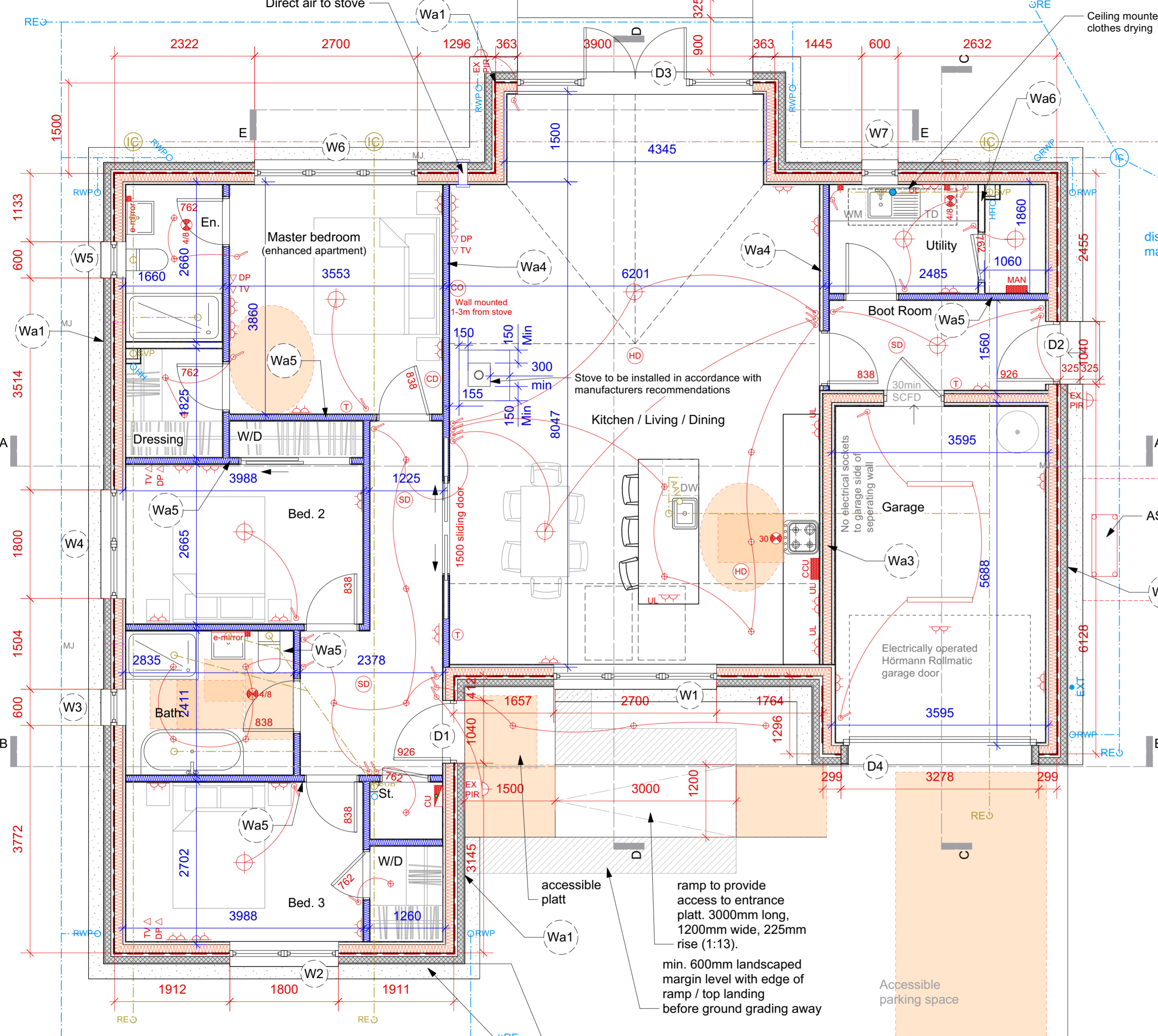
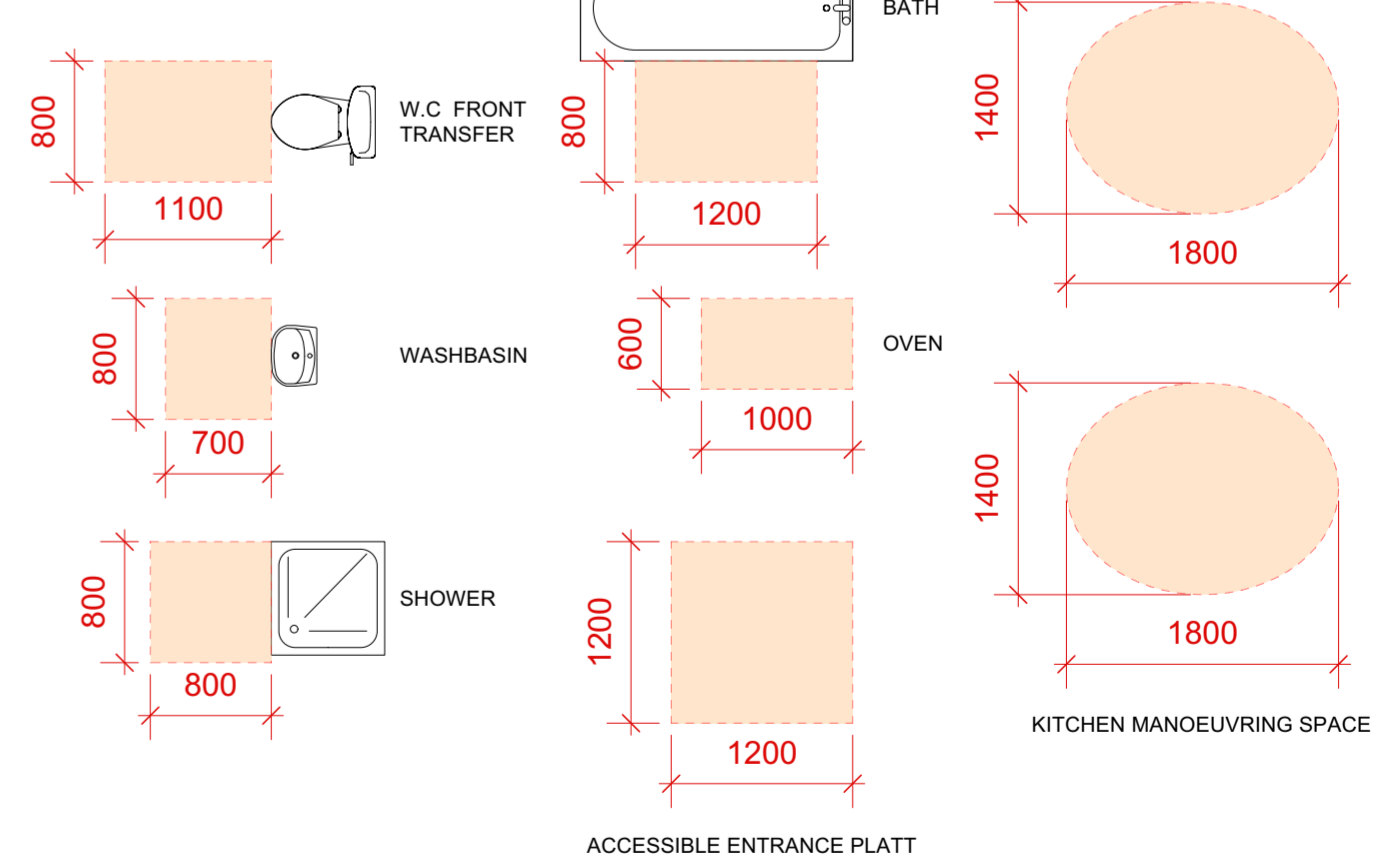
DRAINAGE LEGEND

- IC Inspection Chamber
- ORE Rodding Eye
- ORWP Rainwater Downpipe
- Hot Water Cylinder
- Wet System Radiator
- Wet System Heated Towel Rail
- EXT External Tap
- OHH Hand Hole Access
- Proposed Surface Water
- Proposed Foul Water
- OSVP Soil Vent Pipe
- OAAV Air Admittance Valve
- 110mm Pop Up

ELECTRICAL LEGEND

- Fluorescent Light
- Ceiling Rose
- Mini Down-Lighter
- External Light with PIR Sensor
- Switch
- Double Socket
- Double Socket (upper level)
- Spur with Remote Switch
- Cooker Control Unit
- Data Point
- Telephone Point
- Television Point
- Shaver Socket
- Continuous extract fan with 15 amp fused spur and plain indicator switch capable of min. 4 litres/sec. with 8 litres/sec. boost.
- Extract fan with 15 amp fused spur and plain indicator switch capable of min. 30 litres/sec.
- Smoke Detector
- Heat Detector
- CO Detector
- CO2 Detector
- Thermostat
- Distribution Board or Consumer Unit
- Manifold for Underfloor Heating

ACTIVITY SPACES



Stove to be installed in accordance with manufacturers recommendations

Kitchen / Living / Dining

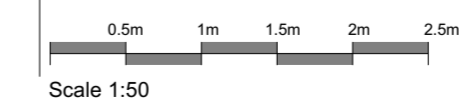
Garage

Electrically operated Hörmann Rollmatic garage door

accessible platt
 ramp to provide access to entrance platt. 3000mm long, 1200mm wide, 225mm rise (1:13).
 min. 600mm landscaped margin level with edge of ramp / top landing before ground grading away

Note: Dwelling will be more than 1m away from boundaries in all directions

GROUND FLOOR PLAN



Rev	Date	Changes

NOTE: DRAWINGS FOR PURPOSES OF OBTAINING BUILDING WARRANT ONLY
 FOR FUTHER DETAILS PLEASE REFER TO SPECIFICATION

kerry smith architects
 4 John Street Montrose Angus DD10 8LY Tel: 01674 660516 info@kerrysmitharchitects.co.uk

Project: Kincardine O'Neil House Development	Address: Plot 34 Durward Gardens Kincardine O'Neil	Client: Snowdrop Developments	Drawing Title: Ground Floor Plan	Job No. / Stage / Dwg. No. 479/BW34/B02
Scale: 1:50@A2	Date: Oct 2021	Drawn by: SA	Checked by: DS	Revision:

This drawing is the copyright of kerry smith architects. This drawing is to be read in conjunction with the consultant's drawings, any discrepancies must be referred to the architect. Do not scale off these drawings