

○ 5.2 LEVEL 07 TERRACE STRATEGY



○ 6.0 MATERIALITY

HARD LANDSCAPE

The material palette for the landscape has been chosen to reflect the landscape and heritage of the area, with referencing to architectural detailing. These will be easy to maintain, repair and replace if necessary.

STREET LEVEL PAVING

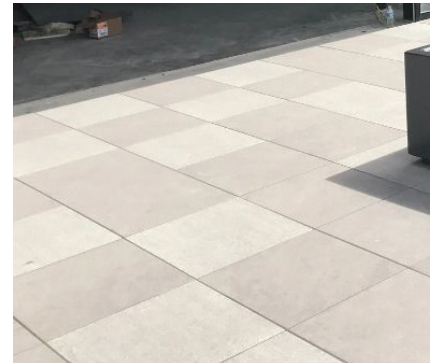
To the west and south of the building, paving is proposed. Where suitable, local materials will be used.

STREET LEVEL BRICK PLANTERS

Recycled brick from the existing building will be targeted for use in the raised planters around the south and west of the building.

ROOF TERRACE PAVING

The roof terrace paving will be made up of paving supported by pedestals and joists to allow the water to drain away between the paving. As well as being slip resistant, they are incredibly high quality, hard wearing and fire resistant.

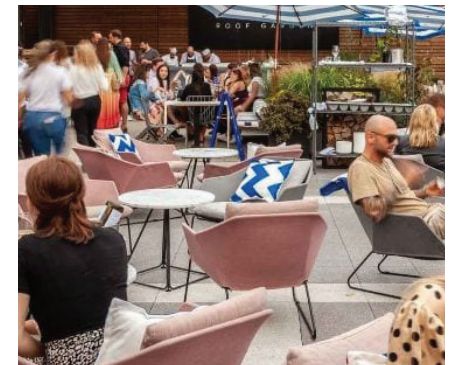


○ 6.1 LANDSCAPE FURNITURE

LANDSCAPE FURNITURE

Throughout the design, there will be numerous opportunities for seating. The seating will be incorporated into the raised planters as well as moveable furniture for the larger gatherings.

The seventh floor terrace area is designed to give the feel for the more intimate gatherings by incorporating dining tables and smaller relaxation areas.



○ 6.2 LIGHTING STRATEGY

ROOF TERRACE

Decorative lighting to the roof terrace will bring the feel of the inside outside and provide a welcoming atmosphere for parties and events.

STREET LEVEL

The streetscape around the building will be lit by wall mounted lighting creating a welcoming space.

