

G3

131 MINERVA STREET, GLASGOW

EMERGING FUTURE CONTEXT

PRESENTING
CONTEXT FOR
FUTURE ADJACENT
DEVELOPMENT



G3

131 MINERVA STREET, GLASGOW

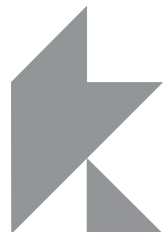


APPEARANCE AND MATERIALITY

Material choice for the proposals have been informed by a study of the surrounding context, it's tonal palette, texture and format. From the full study, key tones have been isolated to define the material palette of the proposals.

Material choices are as follows:

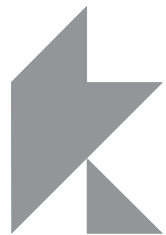
- Brick finish to be the primary material to L07;
- Stone finish to compliment brick tones on L00 and L07-09;
- Stone finish to compliment brick tones within vertical recessed areas to L01 amenity spaces;
- Metal finish to cladding on North Elevation;
- Dark grey upvc window & door system;
- Metal finish to balconies



APPEARANCE AND MATERIALITY

KEY

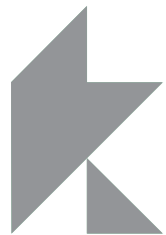
- 1 Stone finish
- 2 Brick finish
- 3 Window system
- 4 Metal finish



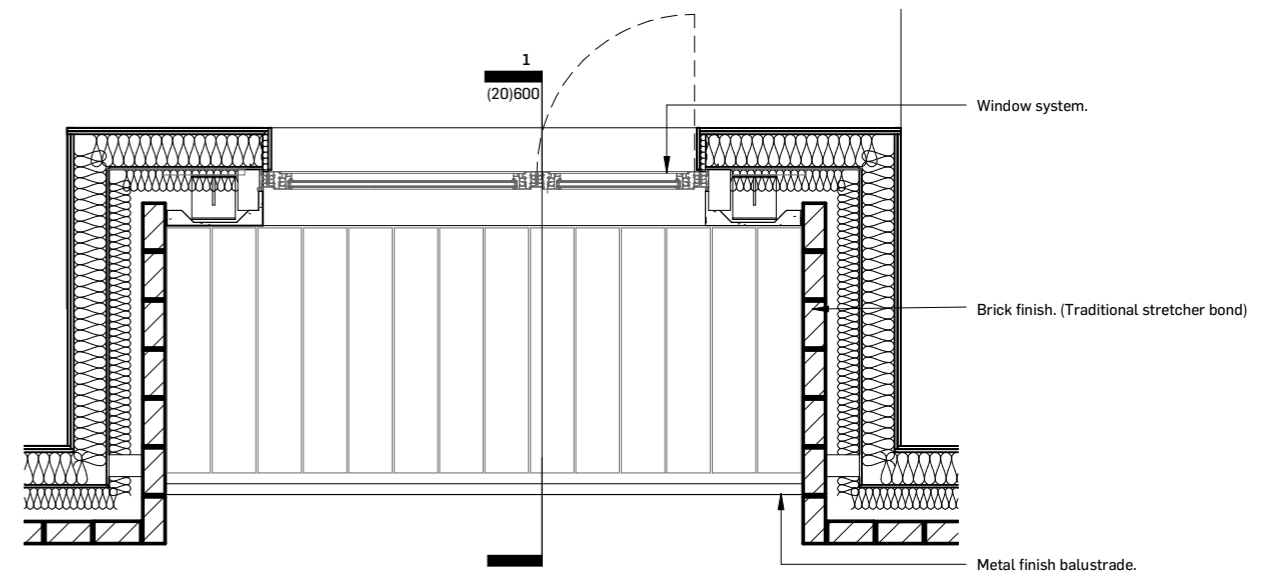
APPEARANCE AND MATERIALITY

KEY

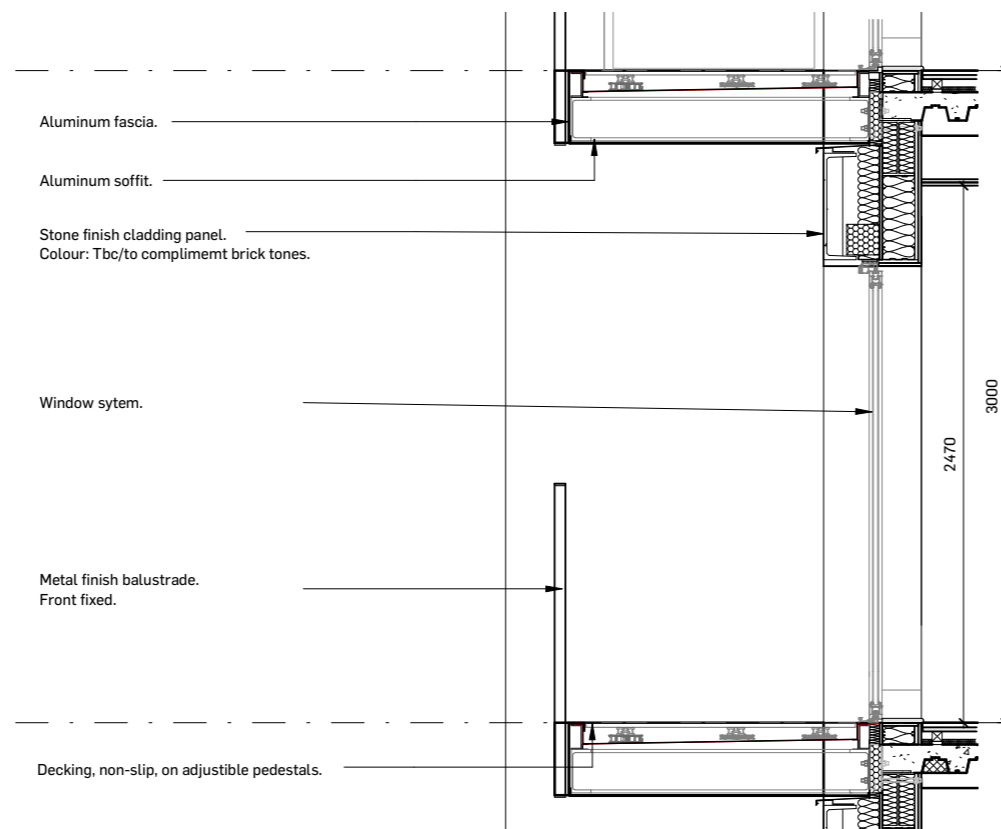
- 1 Stone finish
- 2 Brick finish
- 3 Window system
- 4 Metal finish



BAY STUDY SOUTH FACING



PROPOSED PLAN



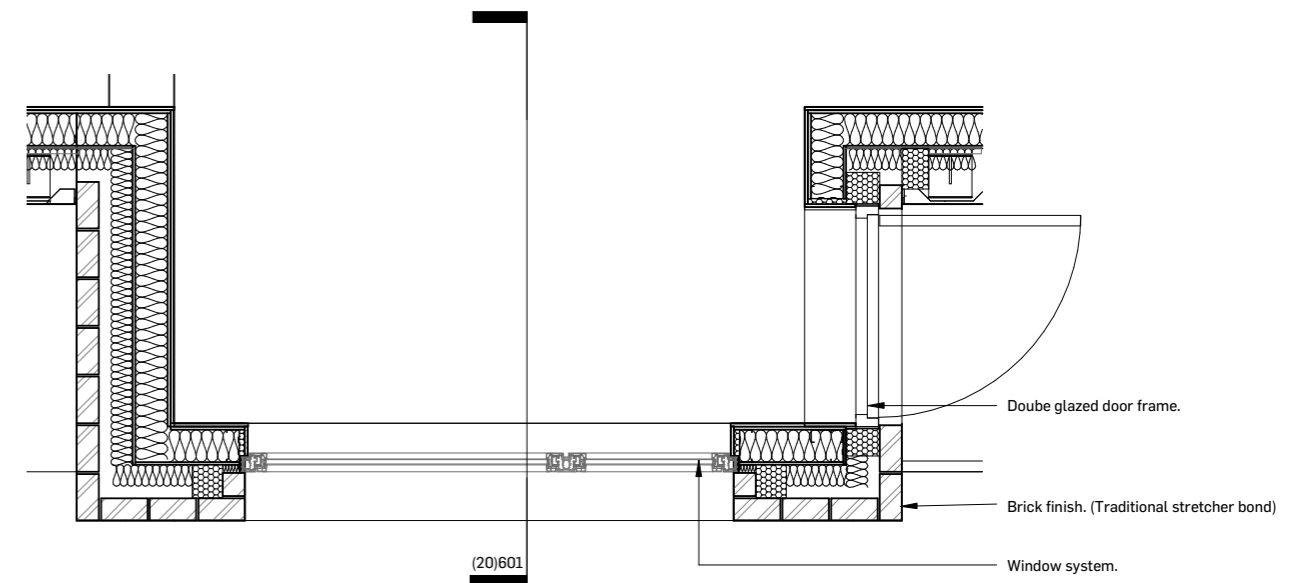
PROPOSED SECTION



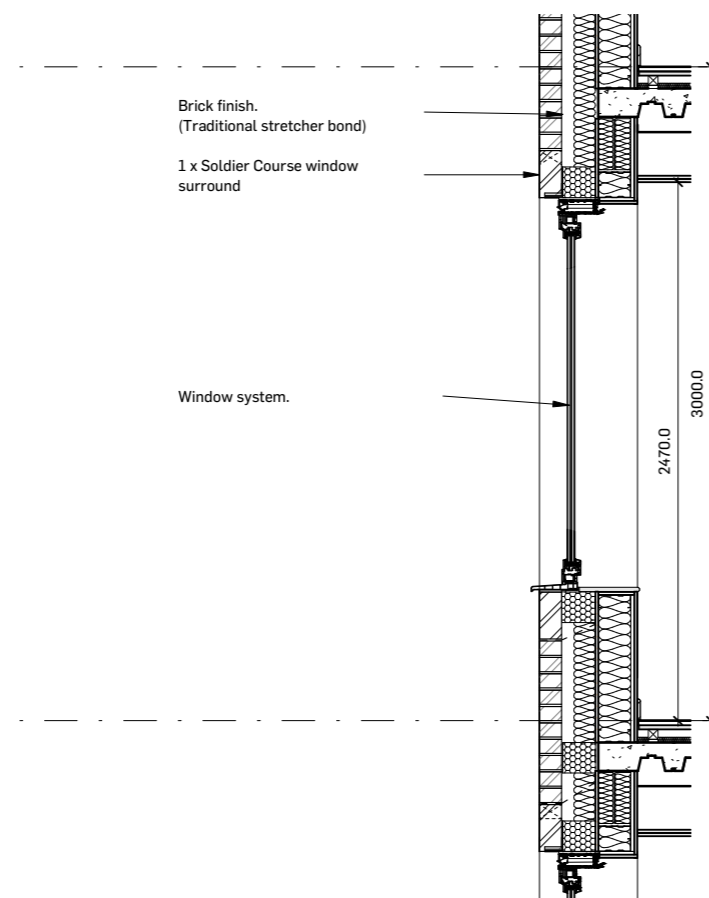
PROPOSED ELEVATION



BAY STUDY WEST FACING



PROPOSED PLAN



PROPOSED SECTION

