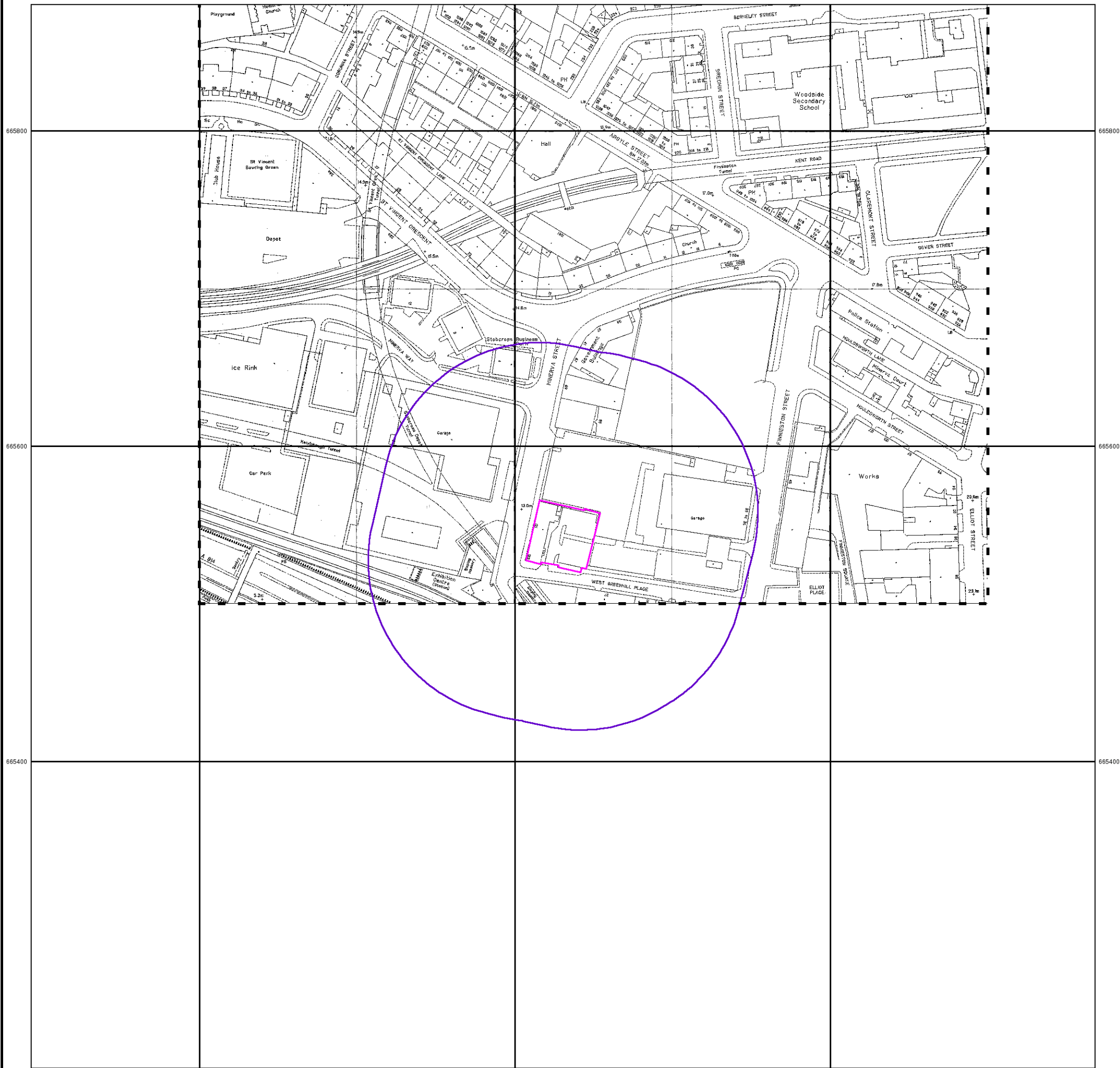


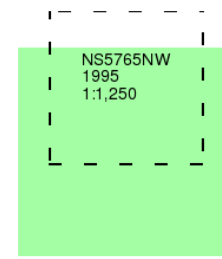
257000 257200 257400



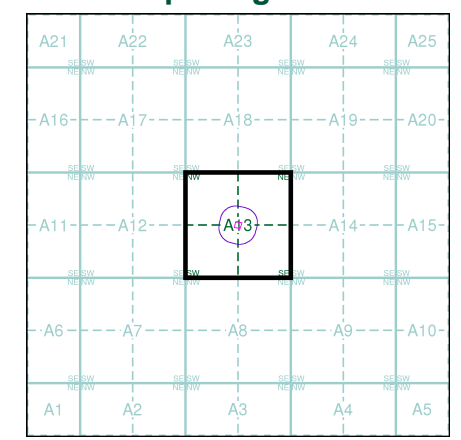
Large-Scale National Grid Data
Published 1995
Source map scale - 1:1,250

'Large Scale National Grid Data' superseded SIM cards (Ordnance Survey's 'Survey of Information on Microfilm') in 1992, and continued to be produced until 1999. These maps were the fore-runners of digital mapping and so provide detailed information on houses and roads, but tend to show less topographic features such as vegetation. These maps were produced at both 1:2,500 and 1:1,250 scales.

Map Name(s) and Date(s)



Historical Map - Segment A13



Order Details

Order Number: 279687903_1_1
 Customer Ref: G14-269
 National Grid Reference: 257230, 665540
 Slice: A
 Site Area (Ha): 0.16
 Search Buffer (m): 100

Site Details

Site at 257230, 665540

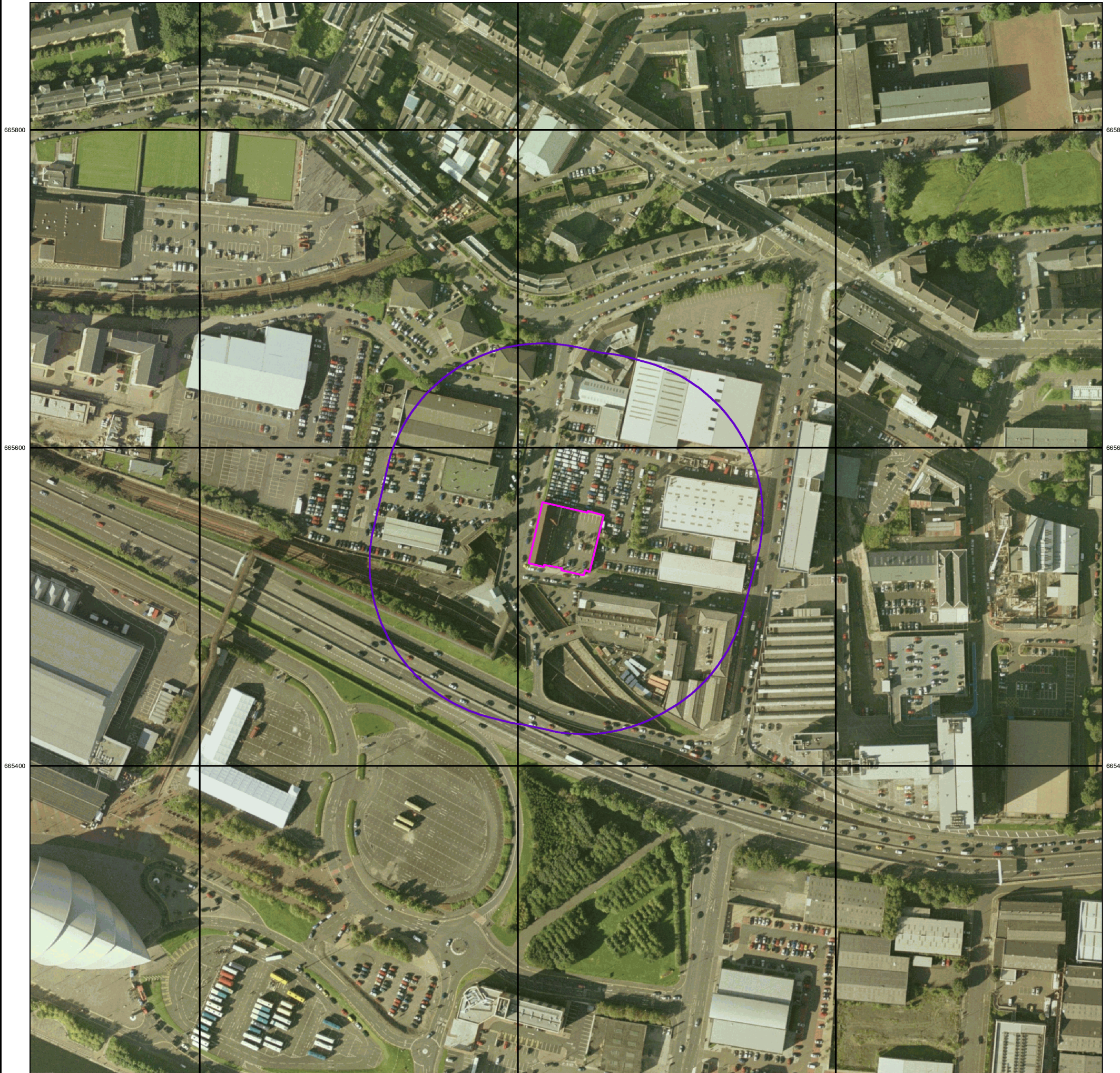


Tel: 0844 844 9952
 Fax: 0844 844 9951
 Web: www.envirocheck.co.uk

257000

257200

257400



© Copyright Getmapping plc

0 100 m

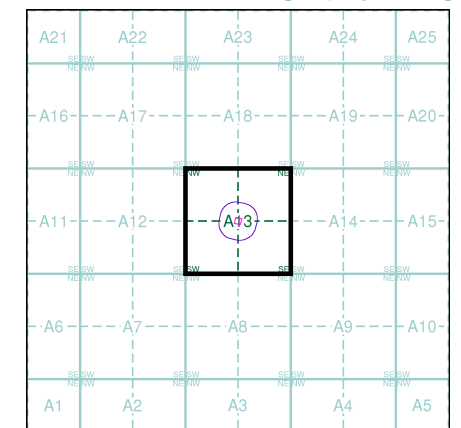


Historical Aerial Photography

Published 2005

This aerial photography was produced by Getmapping, these vertical aerial photographs provide a seamless, full colour survey of the whole of Great Britain

Historical Aerial Photography - Segment A13



Order Details

Order Number: 279687903_1_1
 Customer Ref: G14-269
 National Grid Reference: 257230, 665540
 Slice: A
 Site Area (Ha): 0.16
 Search Buffer (m): 100

Site Details

Site at 257230, 665540



Tel: 0844 844 9952
 Fax: 0844 844 9951
 Web: www.envirocheck.co.uk