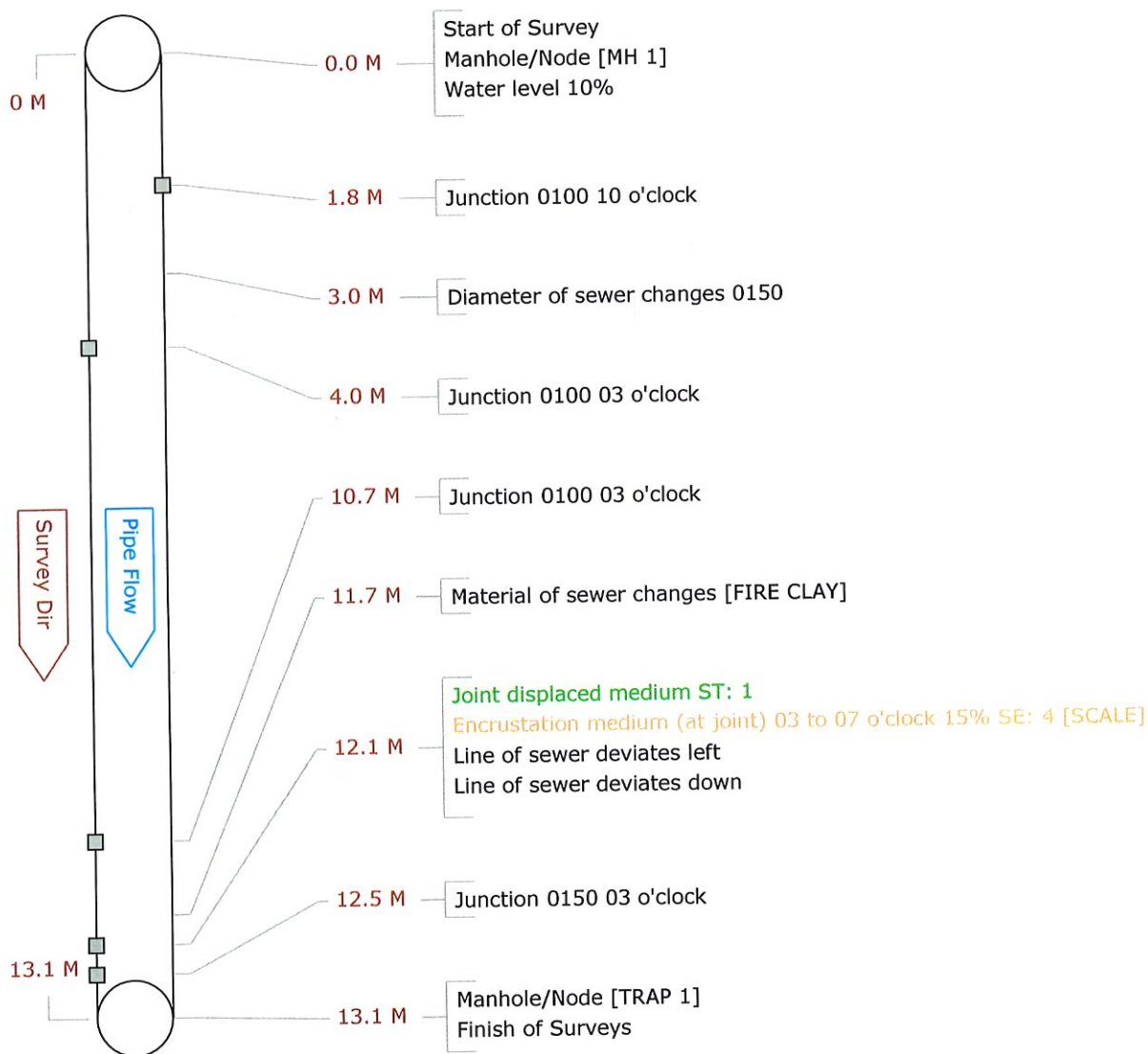


Pipe Graphic Report of PLR

MH 1 X

for GOODSON ASSOCIATES

Sheet 1	Operator C.MCANALLY	Contract F70004	Job Number F70004
Catchment	Division	District	Date 15-09-2021 Time
Road Name MINERVA STREET	Place Name GLASGOW		
Start MH 1	Depth 1.15	Cover level	Invert level M Direction Downstream
Finish TRAP 1	Depth	Cover level	Invert level M Size 100 by mm
Use Combined	Pipe length 3.0 M	Total length 13.1 M	Year laid
Shape Circular	Material Polyvinyl chloride	Weather Dry	
Lining	Pre-clean Y	Last Cleaned	Video Cassette
Purpose	Associated with future capital scheme including Drainage Area Planning		
Location Type	Footpath or verge (within the highway boundary)		
Surface			
Survey comments			
Further location remarks			



Sheet	2	Operator	C.MCANALLY	Contract	F70004	Job Number	F70004
Catchment		Division		District		Date	15-09-2021
Road Name	MINERVA STREET			Place Name	GLASGOW		
Start	MH 1	Depth	1.15	Cover level		Invert level	M
Finish	MH 3	Depth	0.82	Cover level		Invert level	M
Use	Combined			Pipe length	6.00	M	Total length
Shape	Circular			Material	Polyvinyl chloride		Weather
Lining				Pre-clean	Y		Video
Purpose	Associated with future capital scheme including Drainage Area Planning						
Location Type	Footpath or verge (within the highway boundary)						
Survey comments				Structural	Service	Constructional	
Further location remarks				Miscellaneous	Hydraulic		

Video	Photo	Count	CD	Code	Dim	Fr	To	mm	%	Remarks
			0.0	ST						Start of Survey
			0.0	MH						Manhole/Node
			0.0	WL					10	Water level
			4.0	JN	0100	09				Junction
			6.6	JN	0100	09				Junction
			16.3	JN	0100	09				Junction
			19.0	MH						Manhole/Node
			19.0	FH						Finish of Surveys

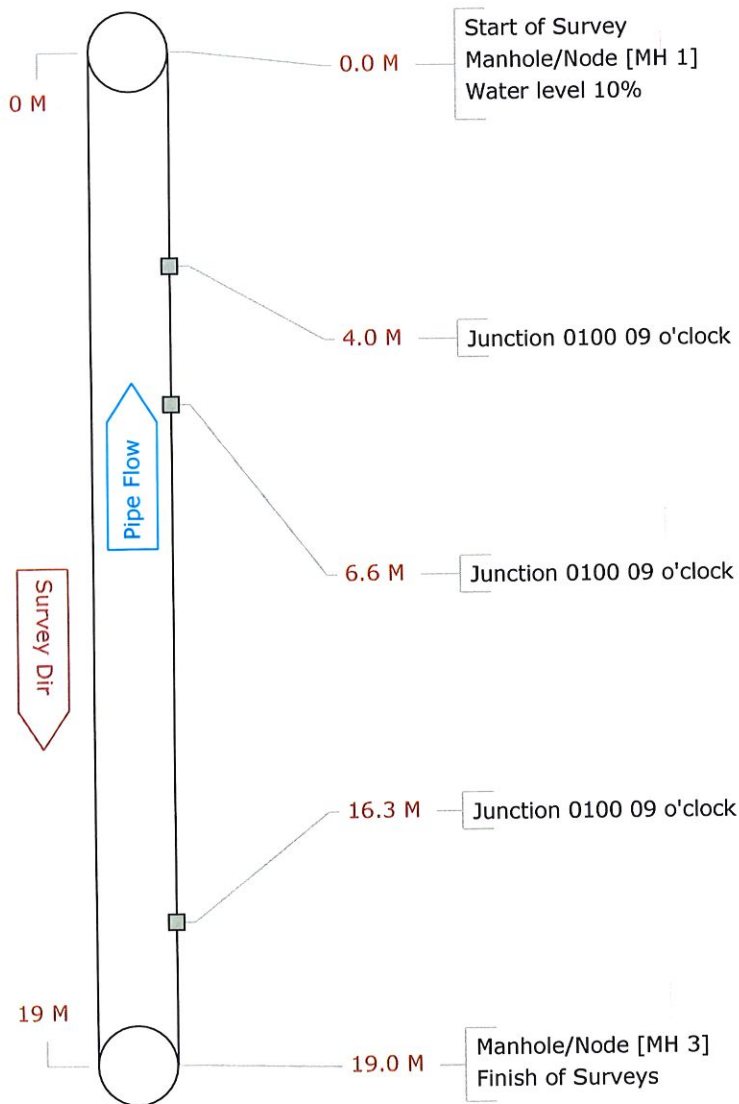
19.0 M Total Length Surveyed

Pipe Graphic Report of PLR

MH 3 X

for GOODSON ASSOCIATES

Sheet 2	Operator C.MCANALLY	Contract F70004	Job Number F70004
Catchment	Division	District	Date 15-09-2021 Time
Road Name MINERVA STREET	Place Name GLASGOW		
Start MH 1	Depth 1.15	Cover level	Invert level M Direction Upstream
Finish MH 3	Depth 0.82	Cover level	Invert level M Size 100 by mm
Use Combined	Pipe length 6.0 M	Total length 19.0 M	Year laid
Shape Circular	Material Polyvinyl chloride	Weather Dry	
Lining	Pre-clean Y	Last Cleaned	Video Cassette
Purpose	Associated with future capital scheme including Drainage Area Planning		
Location Type	Footpath or verge (within the highway boundary)		
Surface			
Survey comments			
Further location remarks			



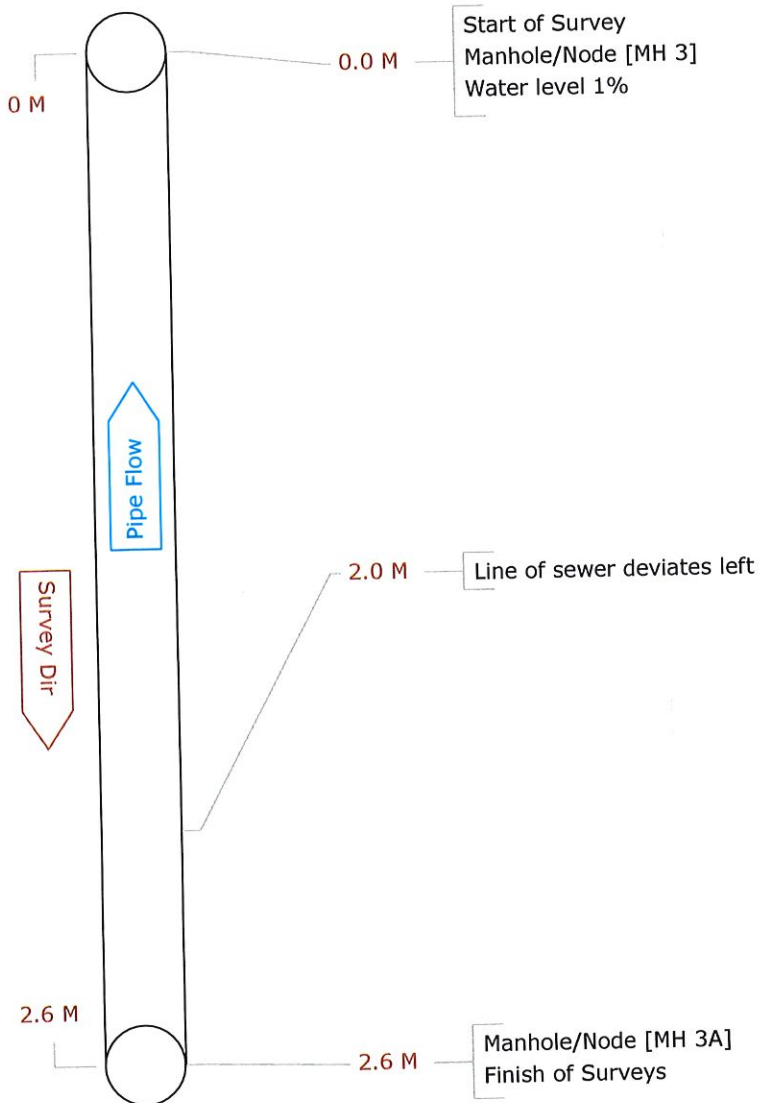
Sheet 3	Operator C.MCANALLY	Contract F70004	Job Number F70004
Catchment	Division	District	Date 15-09-2021
Road Name	MINERVA STREET	Place Name	GLASGOW
Start MH 3	Depth 0.82	Cover level	Invert level M
Finish MH 3A	Depth 0.70	Cover level	Invert level M
Use Combined	Pipe length 6.00 M	Total length 2.6 M	Year laid
Shape Circular	Material Polyvinyl chloride	Weather Dry	
Lining	Pre-clean Y	Video Cassette	
Purpose	Associated with future capital scheme including Drainage Area Planning		
Location Type	Footpath or verge (within the highway boundary)		
Survey comments	Structural	Service	Constructional
Further location remarks	Miscellaneous	Hydraulic	

Video	Photo	Count	CD	Code	Dim	Fr	To	mm	%	Remarks
		0.0		ST						Start of Survey
		0.0		MH						Manhole/Node
		0.0		WL					1	Water level
		2.0		LL						Line of sewer deviates left
		2.6		MH						Manhole/Node
		2.6		FH						Finish of Surveys

2.6 M Total Length Surveyed

Pipe Graphic Report of PLR **MH 3A X** **for GOODSON ASSOCIATES**

Sheet 3	Operator C.MCANALLY	Contract F70004	Job Number F70004
Catchment	Division	District	Date 15-09-2021 Time
Road Name	MINERVA STREET		Place Name GLASGOW
Start MH 3	Depth 0.82	Cover level	Invert level M Direction Upstream
Finish MH 3A	Depth 0.70	Cover level	Invert level M Size 100 by mm
Use Combined	Pipe length 6.0 M	Total length 2.6 M	Year laid
Shape Circular	Material Polyvinyl chloride	Weather Dry	
Lining	Pre-clean Y	Last Cleaned	Video Cassette
Purpose	Associated with future capital scheme including Drainage Area Planning		
Location Type	Footpath or verge (within the highway boundary)		
Surface			
Survey comments			
Further location remarks			



Sheet 4	Operator C.MCANALLY	Contract F70004	Job Number F70004
Catchment	Division	District	Date 15-09-2021 Time
Road Name MINERVA STREET	Place Name GLASGOW		
Start MH 3A	Depth 0.70	Cover level	Invert level M Direction Up
Finish ROD EYE	Depth	Cover level	Invert level M Size 100 by mm
Use Combined	Pipe length 6.00 M	Total length 9.7 M	Year laid
Shape Circular	Material Polyvinyl chloride	Weather Dry	
Lining	Pre-clean Y	Video Cassette	
Purpose	Associated with future capital scheme including Drainage Area Planning		
Location Type	Footpath or verge (within the highway boundary)		
Survey comments	Structural	Service	Constructional
Further location remarks	Miscellaneous	Hydraulic	

Video	Photo	Count	CD	Code	Dim	Fr	To	mm	%	Remarks
		0.0	ST	Start of Survey						
		0.0	MH	Manhole/Node						MH 3A
		0.0	WL	Water level					10	
		1.1	JN	Junction	0100	10				
		5.6	JN	Junction	0100	10				
		6.5	JN	Junction	0100	09				
		8.5	JN	Junction	0100	10				4
		9.0	LU	Line of sewer deviates up						
		9.7	MH	Manhole/Node						ROD EYE
		9.7	FH	Finish of Surveys						

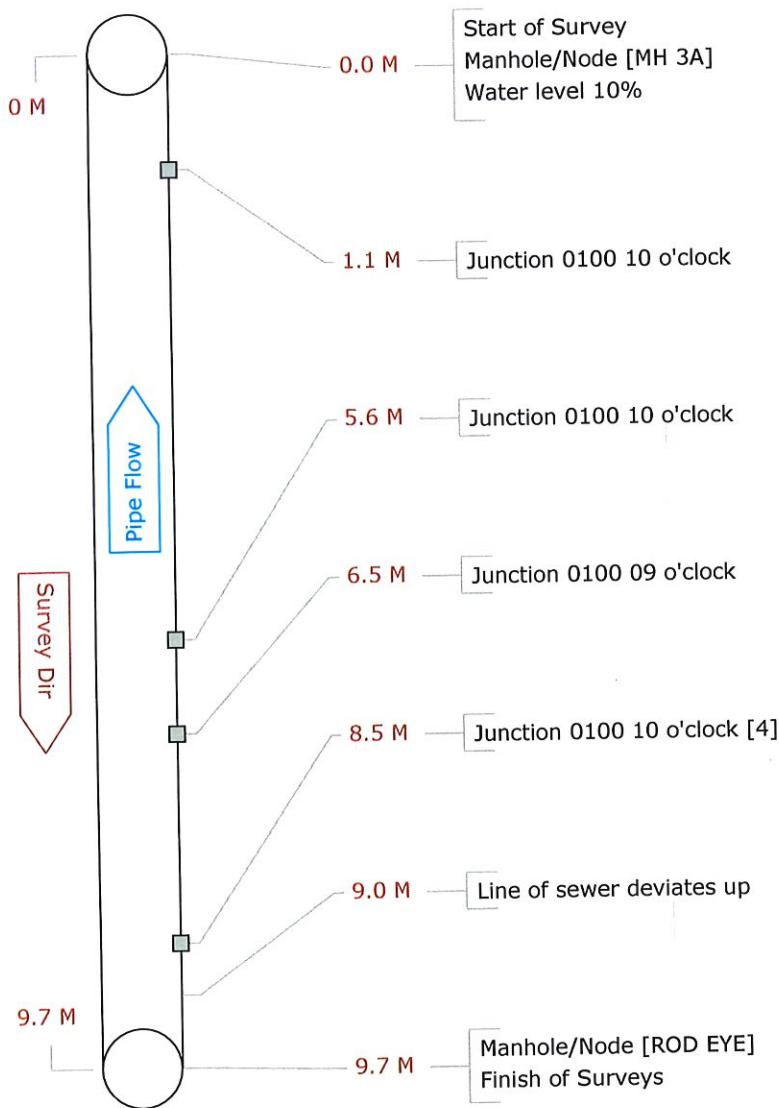
9.7 M Total Length Surveyed

Pipe Graphic Report of PLR

ROD EYE X

for GOODSON ASSOCIATES

Sheet 4	Operator C.MCANALLY	Contract F70004	Job Number F70004
Catchment	Division	District	Date 15-09-2021 Time
Road Name MINERVA STREET	Place Name GLASGOW		
Start MH 3A	Depth 0.70	Cover level	Invert level M Direction Upstream
Finish ROD EYE	Depth	Cover level	Invert level M Size 100 by mm
Use Combined	Pipe length 6.0 M	Total length 9.7 M	Year laid
Shape Circular	Material Polyvinyl chloride	Weather Dry	
Lining	Pre-clean Y	Last Cleaned	Video Cassette
Purpose	Associated with future capital scheme including Drainage Area Planning		
Location Type	Footpath or verge (within the highway boundary)		
Surface			
Survey comments			
Further location remarks			



Sheet 5	Operator C.MCANALLY	Contract F70004	Job Number F70004
Catchment	Division	District	Date 15-09-2021 Time
Road Name MINERVA STREET	Place Name GLASGOW		
Start MH 2	Depth	Cover level	Invert level M Direction Down
Finish MH 1	Depth 1.15	Cover level	Invert level M Size 100 by mm
Use Combined	Pipe length 6.00 M	Total length 7.3 M	Year laid
Shape Circular	Material Polyvinyl chloride	Weather Dry	
Lining	Pre-clean Y	Video Cassette	
Purpose	Associated with future capital scheme including Drainage Area Planning		
Location Type	Gardens (within private property)		
Survey comments	MH 2 IS BURIED IN THE SHRUBS	Structural	Service Constructional
Further location remarks		Miscellaneous	Hydraulic

Video	Photo	Count	CD	Code	Dim	Fr	To	mm	%	Remarks
		0.0	ST	Start of Survey						
		0.0	MH	Manhole/Node						MH 2
		0.0	WL	Water level					5	
		7.3	MH	Manhole/Node						MH 1
		7.3	FH	Finish of Surveys						

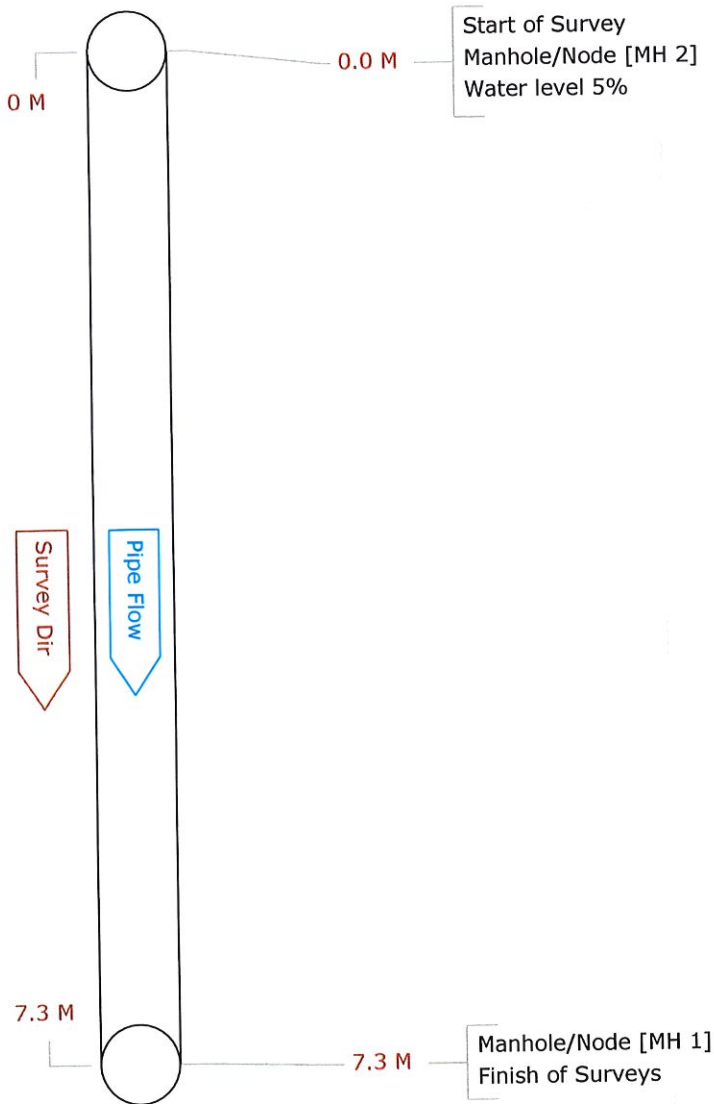
7.3 M Total Length Surveyed

Pipe Graphic Report of PLR

MH 2 X

for GOODSON ASSOCIATES

Sheet 5	Operator C.MCANALLY	Contract F70004	Job Number F70004
Catchment	Division	District	Date 15-09-2021 Time
Road Name MINERVA STREET	Place Name GLASGOW		
Start MH 2	Depth	Cover level	Invert level M Direction Downstream
Finish MH 1	Depth 1.15	Cover level	Invert level M Size 100 by mm
Use Combined	Pipe length 6.0 M	Total length 7.3 M	Year laid
Shape Circular	Material Polyvinyl chloride	Weather Dry	
Lining	Pre-clean Y	Last Cleaned	Video Cassette
Purpose	Associated with future capital scheme including Drainage Area Planning		
Location Type	Gardens (within private property)		
Surface			
Survey comments	MH 2 IS BURIED IN THE SHRUBS		
Further location remarks			



Sheet 6	Operator C.MCANALLY	Contract F70004	Job Number F70004
Catchment	Division	District	Date 15-09-2021 Time
Road Name	MINERVA STREET		Place Name GLASGOW
Start RG 1	Depth	Cover level	Invert level M Direction Down
Finish MH 2	Depth	Cover level	Invert level M Size 100 by mm
Use Combined	Pipe length 6.00 M	Total length 12.0 M	Year laid
Shape Circular	Material Polyvinyl chloride	Weather Dry	
Lining	Pre-clean Y	Video Cassette	
Purpose	Associated with future capital scheme including Drainage Area Planning		
Location Type	Light road (rural roads with light traffic, town and city back streets)		
Survey comments	MH 2 IS BURIED	Structural	Service Constructional
Further location remarks		Miscellaneous	Hydraulic

Video	Photo	Count	CD	Code	Dim	Fr	To	mm	%	Remarks
		0.0		ST						Start of Survey
		0.0		MH						Manhole/Node RG 1
		0.0		WL					5	Water level
		5.0		GO						General observation Y-BRANCH MAIN LINE
		5.0		LL						Line of sewer deviates left
		12.0		MH						Manhole/Node MH 2
		12.0		FH						Finish of Surveys

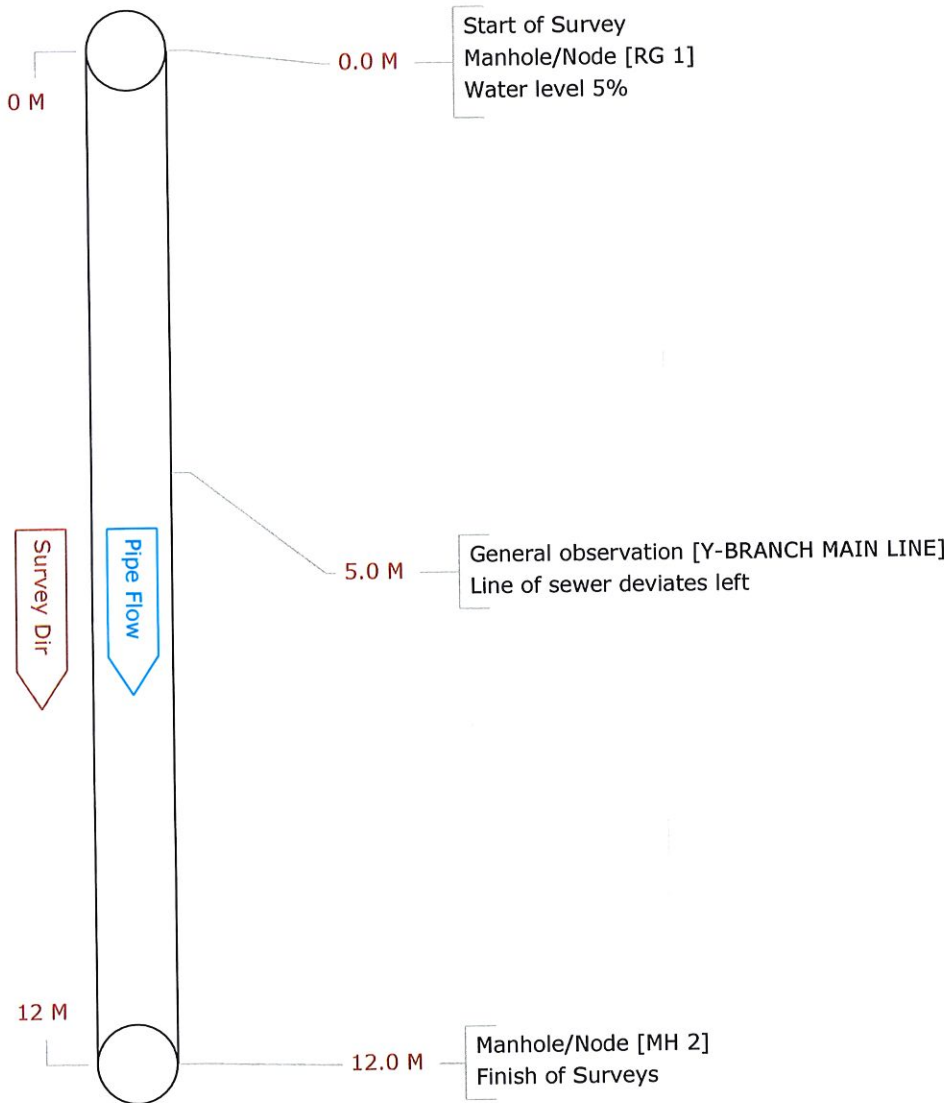
12.0 M Total Length Surveyed

Pipe Graphic Report of PLR

RG 1 X

for GOODSON ASSOCIATES

Sheet 6	Operator C.MCANALLY	Contract F70004	Job Number F70004
Catchment	Division	District	Date 15-09-2021 Time
Road Name MINERVA STREET	Place Name GLASGOW		
Start RG 1	Depth	Cover level	Invert level M Direction Downstream
Finish MH 2	Depth	Cover level	Invert level M Size 100 by mm
Use Combined	Pipe length 6.0 M	Total length 12.0 M	Year laid
Shape Circular	Material Polyvinyl chloride	Weather Dry	
Lining	Pre-clean Y	Last Cleaned	Video Cassette
Purpose Associated with future capital scheme including Drainage Area Planning			
Location Type Light road (rural roads with light traffic, town and city back streets)			
Surface			
Survey comments	MH 2 IS BURIED		
Further location remarks			



Sheet 7	Operator C.MCANALLY	Contract F70004	Job Number F70004
Catchment	Division	District	Date 15-09-2021 Time
Road Name	MINERVA STREET		Place Name GLASGOW
Start RG 2	Depth	Cover level	Invert level M Direction Down
Finish MH 2	Depth	Cover level	Invert level M Size 100 by mm
Use Combined	Pipe length 6.00 M	Total length 29.2 M	Year laid
Shape Circular	Material Polyvinyl chloride	Weather Dry	
Lining	Pre-clean Y	Video Cassette	
Purpose	Associated with future capital scheme including Drainage Area Planning		
Location Type	Light road (rural roads with light traffic, town and city back streets)		
Survey comments	MH 2 IS BURIED	Structural	Service Constructional
Further location remarks		Miscellaneous	Hydraulic

Video	Photo	Count	CD	Code	Dim	Fr	To	mm	%	Remarks
		0.0		ST						Start of Survey
		0.0		MH						Manhole/Node RG 2
		0.0		WL					0	Water level
		22.0		JN	0100	09				Junction CONNECTS RG 1
		29.2		MH						Manhole/Node MH 2
		29.2		FH						Finish of Surveys

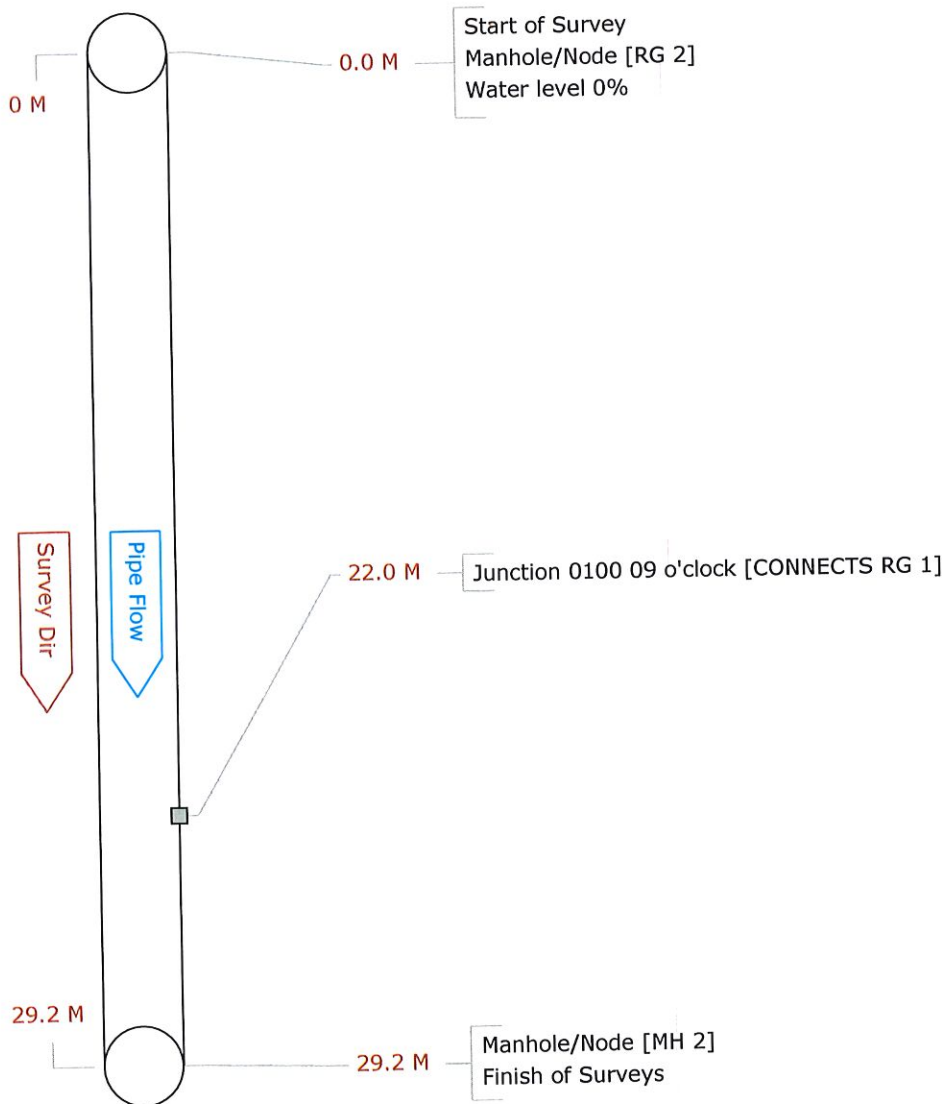
29.2 M Total Length Surveyed

Pipe Graphic Report of PLR

RG 2 X

for GOODSON ASSOCIATES

Sheet 7	Operator C.MCANALLY	Contract F70004	Job Number F70004
Catchment	Division	District	Date 15-09-2021 Time
Road Name MINERVA STREET	Place Name GLASGOW		
Start RG 2	Depth	Cover level	Invert level M Direction Downstream
Finish MH 2	Depth	Cover level	Invert level M Size 100 by mm
Use Combined	Pipe length 6.0 M	Total length 29.2 M	Year laid
Shape Circular	Material Polyvinyl chloride	Weather Dry	
Lining	Pre-clean Y	Last Cleaned	Video Cassette
Purpose	Associated with future capital scheme including Drainage Area Planning		
Location Type	Light road (rural roads with light traffic, town and city back streets)		
Surface			
Survey comments	MH 2 IS BURIED		
Further location remarks			



Sheet	8	Operator	C.MCANALLY	Contract	F70004	Job Number	F70004
Catchment		Division		District		Date	15-09-2021
Road Name	MINERVA STREET			Place Name	GLASGOW		
Start	MH 2503	Depth	3.49	Cover level		Invert level	M
Finish	MH 2502	Depth	3.11	Cover level		Invert level	M
Use	Combined		Pipe length	2.50	M	Total length	50.0
Shape	Circular		Material	Concrete		Weather	Dry
Lining			Pre-clean	N		Video	Cassette
Purpose	Associated with future capital scheme including Drainage Area Planning						
Location Type	Light road (rural roads with light traffic, town and city back streets)						
Survey comments				Structural	Service	Constructional	
Further location remarks				Miscellaneous	Hydraulic		

Video	Photo	Count	CD	Code	Dim	Fr	To	mm	%	Remarks
		0.0		ST						Start of Survey
		0.0		MH						Manhole/Node MH 2503
		0.0		WL					10	Water level
		14.0		CXI	0150	02		0100		Connection defective, intruding LIVE
		28.0		CN	0150	02				Connection
		50.0		MH						Manhole/Node MH 2502
		50.0		FH						Finish of Surveys

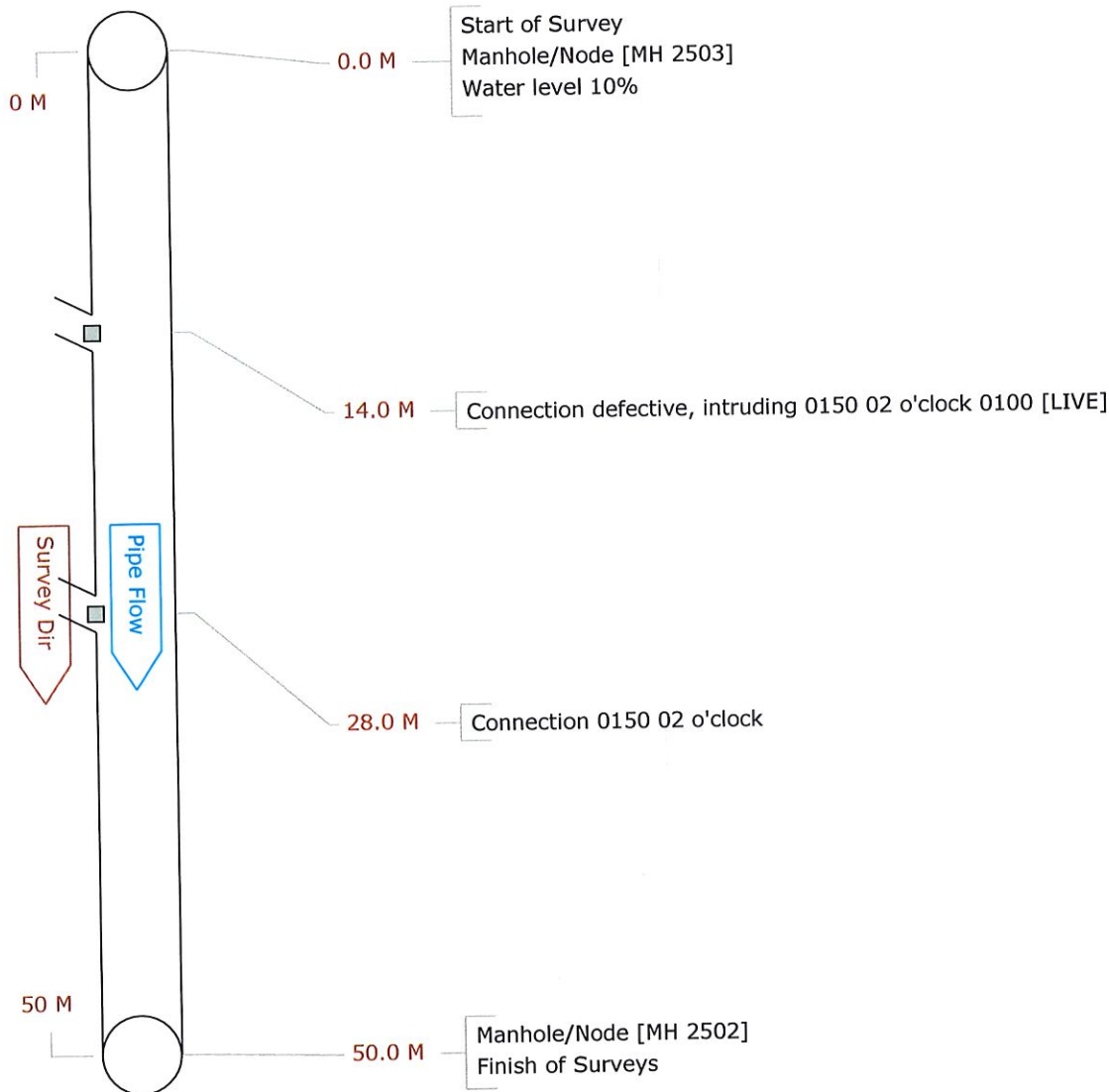
50.0 M Total Length Surveyed

Pipe Graphic Report of PLR

MH 2503 X

for GOODSON ASSOCIATES

Sheet 8	Operator C.MCANALLY	Contract F70004	Job Number F70004
Catchment	Division	District	Date 15-09-2021 Time
Road Name MINERVA STREET	Place Name GLASGOW		
Start MH 2503	Depth 3.49	Cover level	Invert level M Direction Downstream
Finish MH 2502	Depth 3.11	Cover level	Invert level M Size 750 by mm
Use Combined	Pipe length 2.5 M	Total length 50.0 M	Year laid Z
Shape Circular	Material Concrete	Weather Dry	
Lining	Pre-clean N	Last Cleaned	Video Cassette
Purpose	Associated with future capital scheme including Drainage Area Planning		
Location Type	Light road (rural roads with light traffic, town and city back streets)		
Surface			
Survey comments			
Further location remarks			



Sheet 9	Operator C.MCANALLY	Contract F70004	Job Number F70004
Catchment	Division	District	Date 15-09-2021 Time
Road Name MINERVA STREET	Place Name GLASGOW		
Start MH 2502	Depth 3.11	Cover level	Invert level M Direction Down
Finish MH 2501	Depth 3.30	Cover level	Invert level M Size 900 by 630 mm
Use Combined	Pipe length M	Total length 49.5 M	Year laid Z
Shape Egg shaped	Material Brick	Weather Dry	
Lining	Pre-clean N	Video Cassette	
Purpose	Associated with future capital scheme including Drainage Area Planning		
Location Type	Light road (rural roads with light traffic, town and city back streets)		
Survey comments	Structural	Service	Constructional
Further location remarks	Miscellaneous	Hydraulic	

Video	Photo	Count	CD	Code	Dim	Fr	To	mm	%	Remarks
		0.0		ST Start of Survey						
		0.0		MH Manhole/Node						MH 2502
		0.0		WL Water level					10	
		1.3		CN Connection	0150	02				
		1.3		LL Line of sewer deviates left						
		6.1		CN Connection	0150	09				LIVE-CONNECTION FROM TRAP 1
		8.0		LL Line of sewer deviates left						
		12.0		LL Line of sewer deviates left						
		14.0		LL Line of sewer deviates left						
		18.4		CXI Connection defective, intruding	0150	11		0045		
		19.0		CN Connection	0150	01				
		22.0		LL Line of sewer deviates left						
		22.0	S1	ESL Scale light		02	10		10	
		49.0		CN Connection	0150	03				
		49.5	F1	ESL Scale light		02	10		10	
		49.5		MH Manhole/Node						MH 2501
		49.5		FH Finish of Surveys						

49.5 M Total Length Surveyed

Pipe Graphic Report of PLR

MH 2502 X

for GOODSON ASSOCIATES

Sheet 9	Operator C.MCANALLY	Contract F70004	Job Number F70004
Catchment	Division	District	Date 15-09-2021 Time
Road Name MINERVA STREET	Place Name GLASGOW		
Start MH 2502	Depth 3.11	Cover level	Invert level M Direction Downstream
Finish MH 2501	Depth 3.30	Cover level	Invert level M Size 900 by 630 mm
Use Combined	Pipe length M	Total length 49.5 M	Year laid Z
Shape Egg shaped	Material Brick	Weather Dry	
Lining	Pre-clean N	Last Cleaned	Video Cassette
Purpose	Associated with future capital scheme including Drainage Area Planning		
Location Type	Light road (rural roads with light traffic, town and city back streets)		
Surface			
Survey comments			
Further location remarks			

