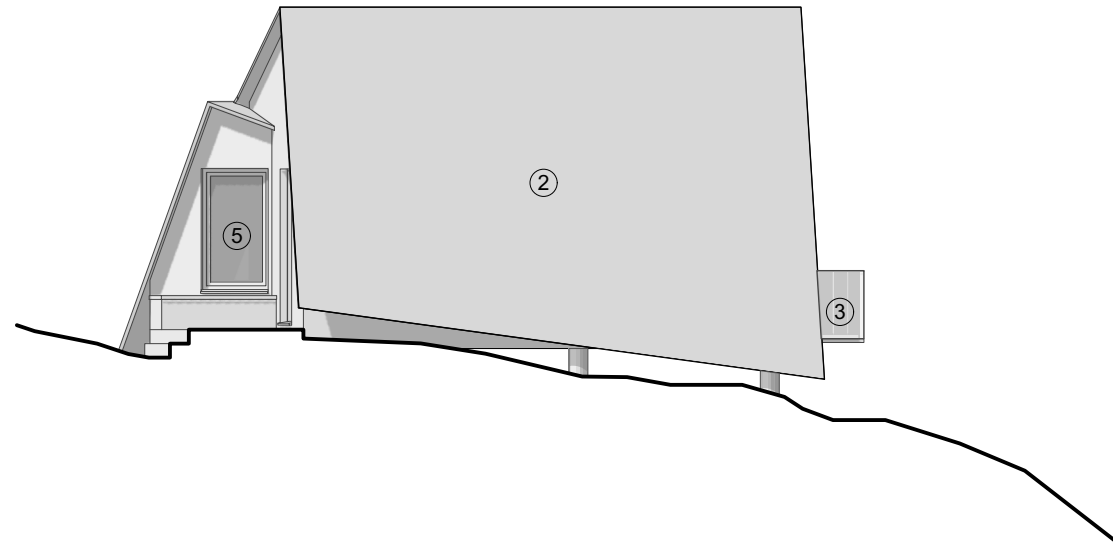
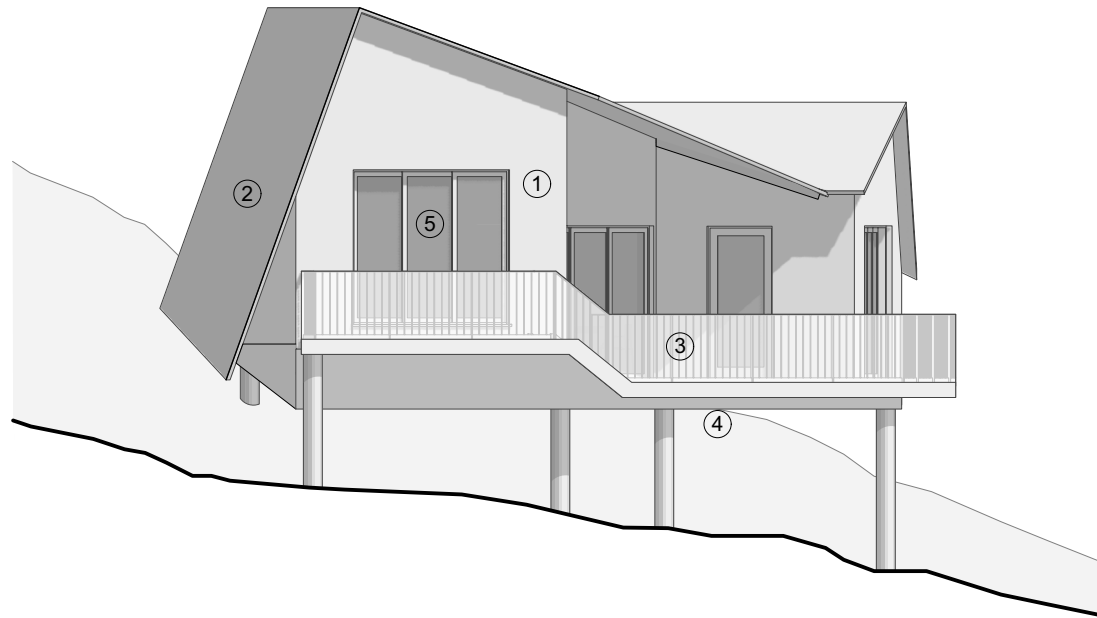


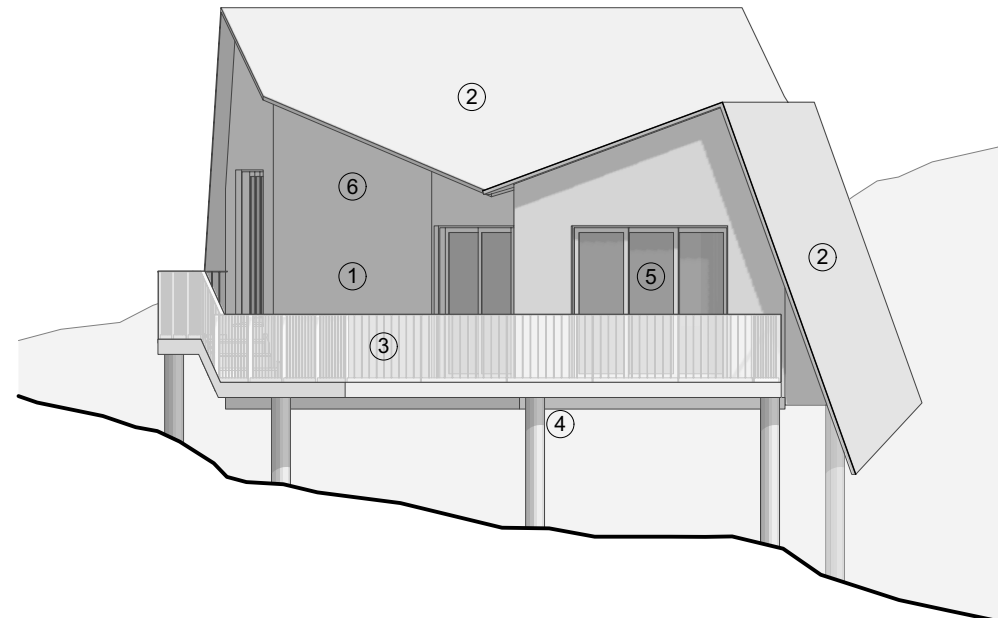
East Elevation (1)



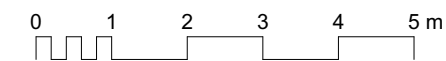
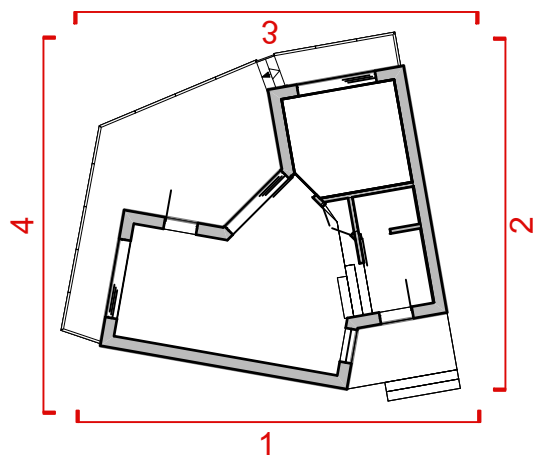
North Elevation (2)



West Elevation (3)



South Elevation (4)



**General Notes**  
 1. All dimensions to be checked on site  
 2. Unless otherwise stated dimensions are in millimetres  
 3. Drawings to be read in conjunction with all other project drawings  
 4. Copyright Barefoot Architects Ltd.

**Materials Key**

- ① Vertical timber cladding
- ② Cedar Shingles
- ③ Timber baulstrades
- ④ Timber platform supported on tree stumps/trees
- ⑤ Timber Windows/Doors  
All glazing to have a light reducing film applied and internal black-out curtains
- ⑥ Bird boxes  
Wooden Apex bird boxes with a 32mm access hole. See ecologist's report for details.

No.	Date	Issue Notes

**barefoot architects**

a: Unit 5.2 Paintworks  
Bristol BS4 3EH

e: info@barefootarchitects.co.uk

t: 0117 9070 971

Project  
Rhydoldog Cabins

Job No. **2107**

Drawing Title  
**The Owl - Elevations**

Drawn By	Date
-	May 2021

Scale **1:100@A3**

Drawing No. **2107-P-142** Revision