

P N M L K J H F E C



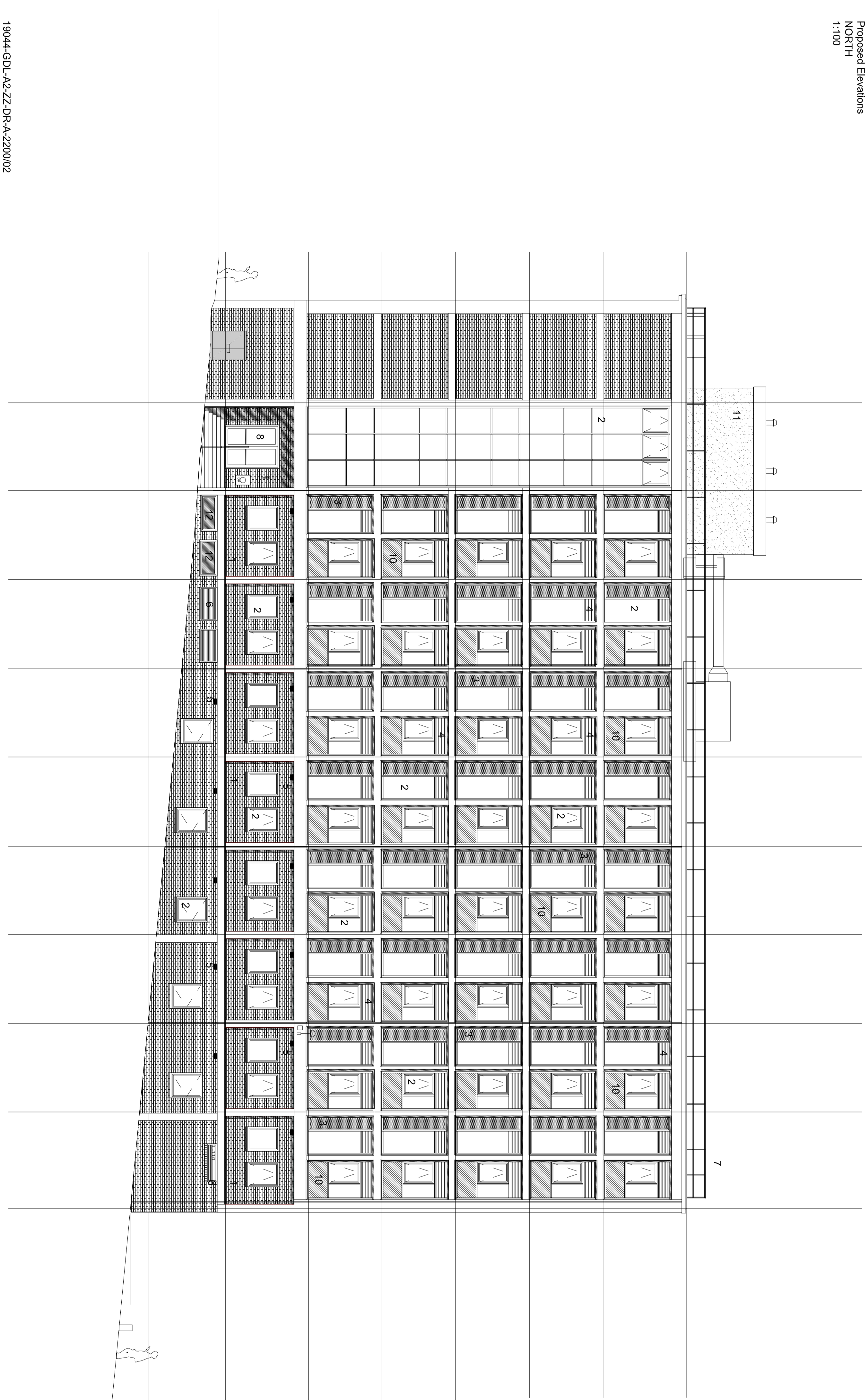
18944-GUL-AZ-ZDR-A-220001
Proposed Elevation
NORTH
1:100



WEST ELEVATION

NORTH ELEVATION

- 1 brickwork to match level 0 brickwork - grey / brown
- 2 PPC aluminium windows / curtain walling with integrated trickle vents - bronze
- 3 PPC aluminium perforated screens - bronze
- 4 PPC aluminium integrated high level louvers - bronze
- 5 Air brick - colour to match brickwork
- 6 PPC aluminium louvers - bronze
- 7 Handrail
- 8 PPC aluminium glazed doors
- 9 Stainless Steel handrail to ramp
- 10 Glass insulated spandrel panel
- 11 Render
- 12 PPC aluminium opaque glazed AOV
- 13 PPC louvre doors - bronze
- 14 PPC aluminium louvers high level - RAL7016



18944-GUL-AZ-ZDR-A-220002
Proposed Elevation
WEST
1:100

0m 5m 10m 20m

GENERAL NOTES
1. This drawing is copyright and must be reproduced without the consent of GDL.
2. All dimensions are in millimetres unless otherwise stated.
3. Do not scale from the drawing - all detail take dimensions from the drawing.
4. Any fabrication materials, finishes or accessories to be used in the design must be approved by the architect.
5. This drawing is to be used in conjunction with the following general provisions:
a) All work shall be in accordance with the current BS standards.
b) All CAD information including drawings shall be maintained.

NO	DATE	BY	CHECKED	SCALE	REVISION
1	27.10.2021	MB	MB	1:100	Initial design
2	01.10.2021	MB	MB	1:100	Final design
3	29.07.2020	MB	MB	1:100	Preparation

gdl architecture

Unit 4, Woods Poultry, Stepple Bank, Newcastle NE 7NP
t: 0191 447 1775
www.gdlarchitecture.co.uk

Project: Crown House, Brighton
Sheet: Proposed Elevations - North & West

Drawn: 18944-GUL-AZ-ZDR-A-2200
Scale: 1:100
Date: 19.04.21
By: MB
Check: MB

Do not scale. This drawing is copy/ghr