

PROPOSED PLANS & ELEVATIONS

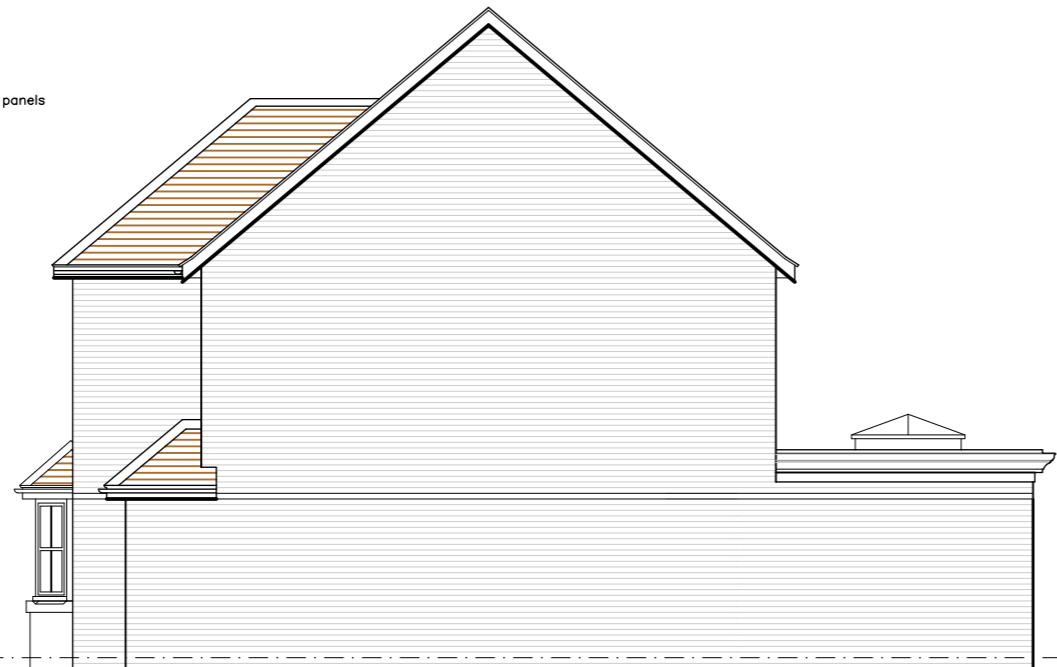
Drawing For Planning Purposes Only
All dimensions and details on this drawing are for planning purposes and should not be used for fabrication and erection purposes. DO NOT scale from this drawing, except for planning purposes, use figured dimensions if available. Any discrepancies should be highlighted without delay.
Note: This drawing has been produced with information from a topographical survey carried out by others. All information therefore derived from the survey drawing is assumed to be accurate and ADP Architects Ltd cannot be held accountable for any discrepancies discovered on site.
IF IN DOUBT ASK FOR CONFIRMATION.

Elevations
Finished ground levels are indicative only, these are generally shown 100mm below dpc level. Please refer to engineers details or the external works layout for finished ground levels if applicable.

B	14.10.21	Planning Update
A	11.10.21	Planning Issue
rev:	date:	note:



Front (West) Elevation 1:100



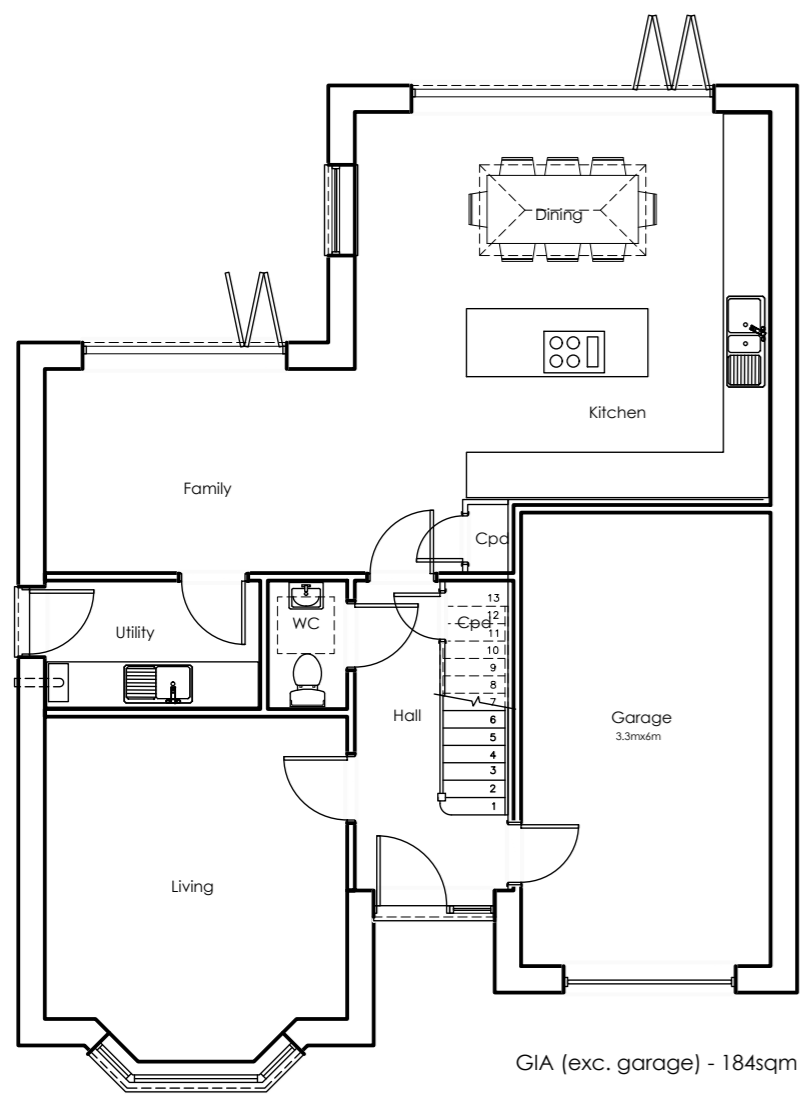
Side (South) Elevation



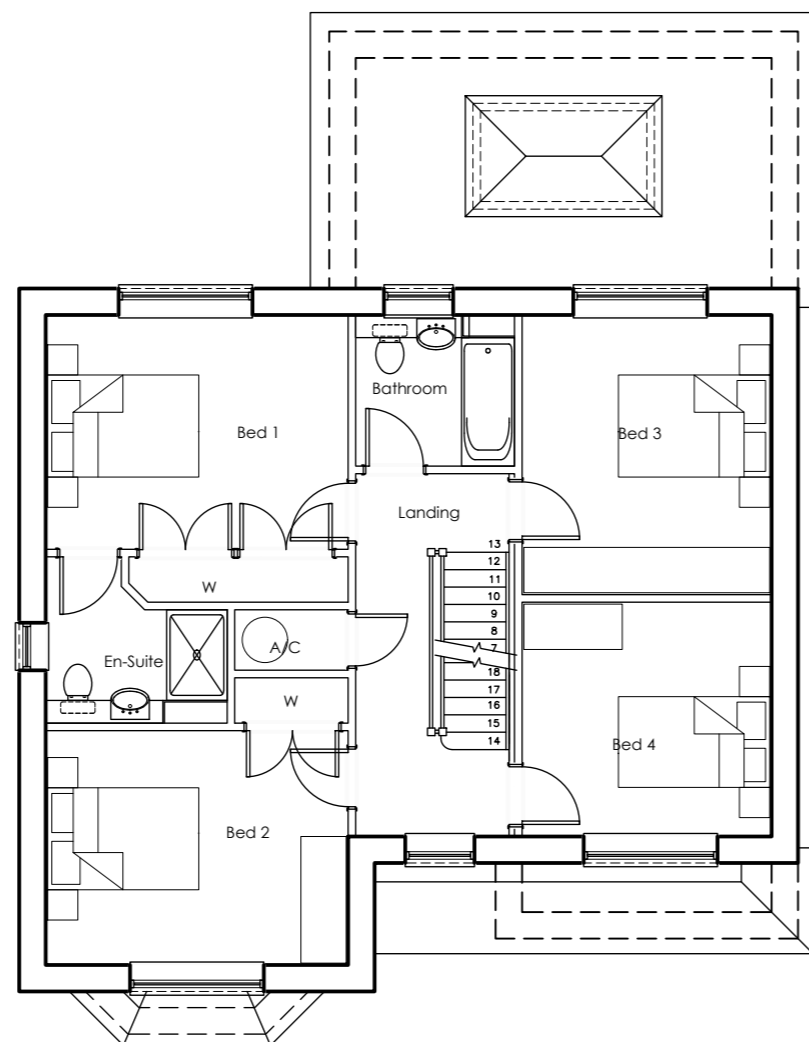
Side (North) Elevation



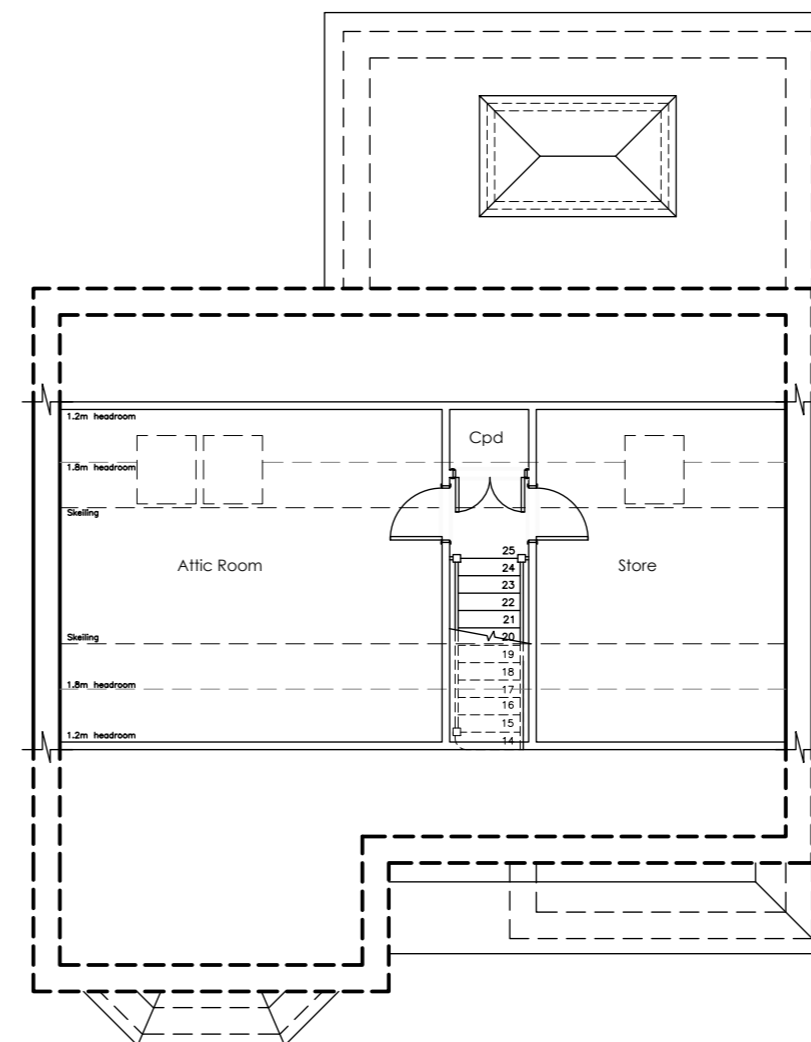
Rear (East) Elevation



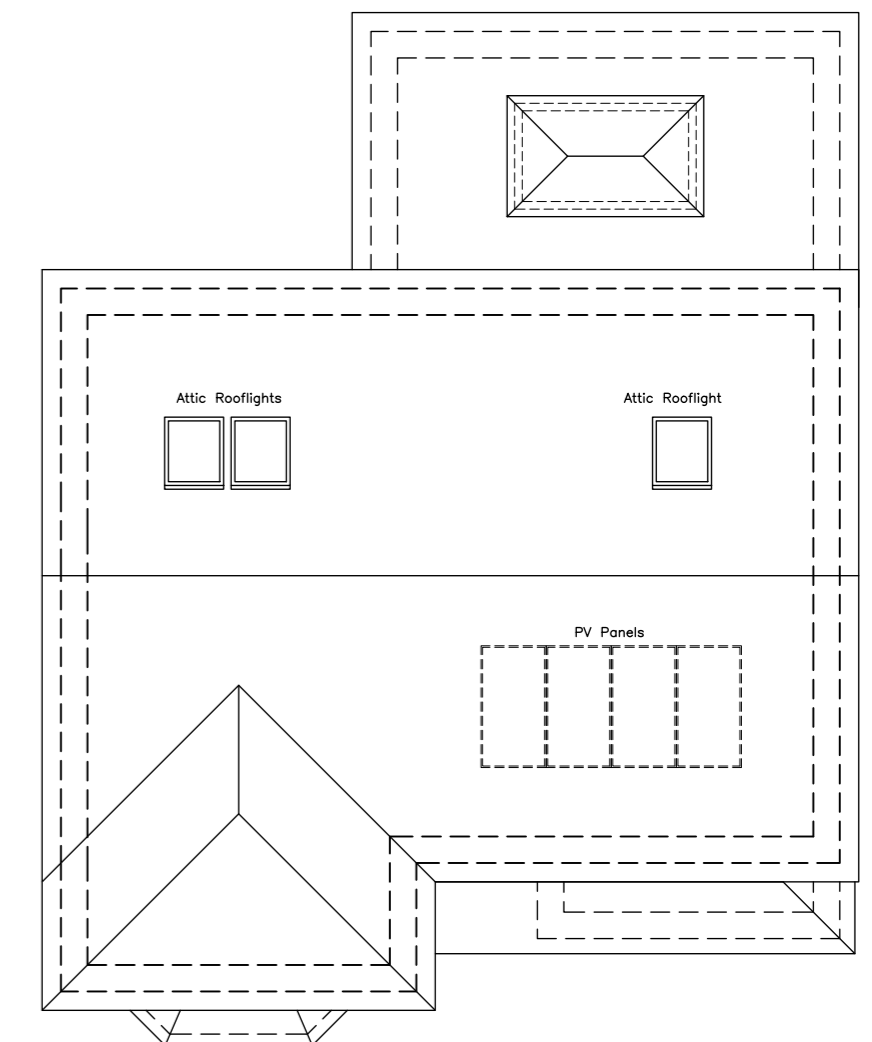
Ground Floor Plan 1:100



First Floor Plan



Second Floor Plan



Roof Plan