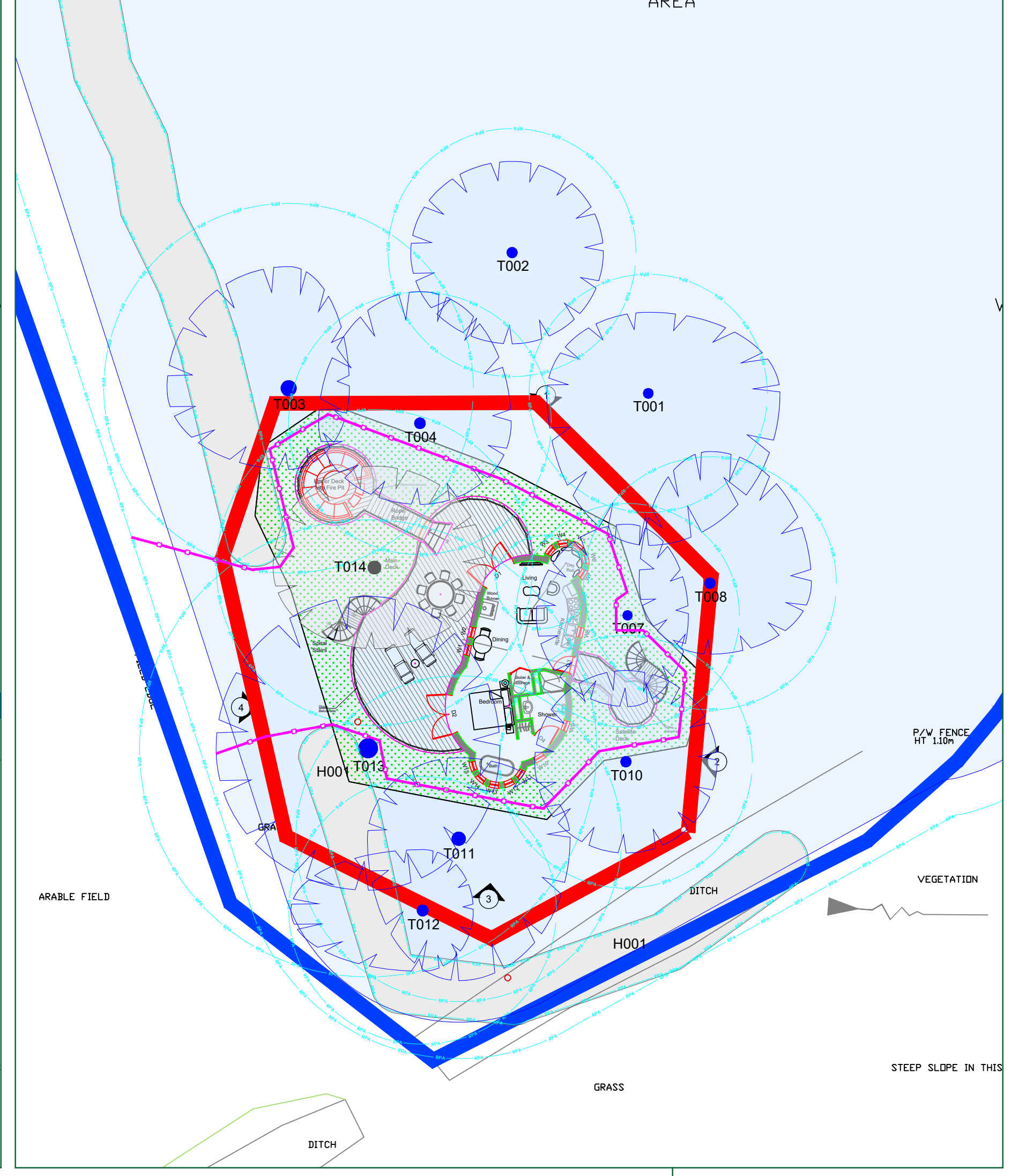
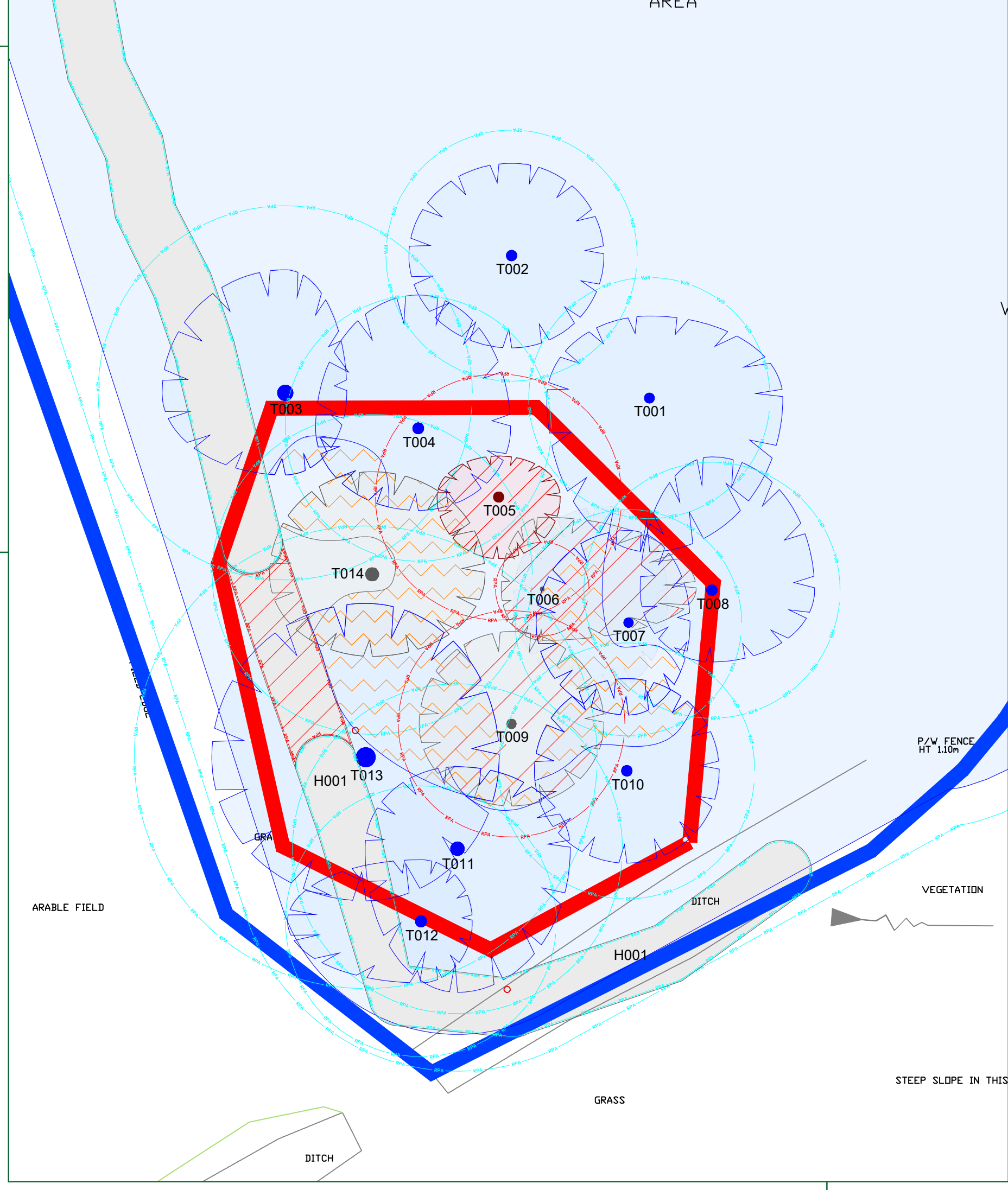


### Existing Site Plan

### Proposed Site Plan

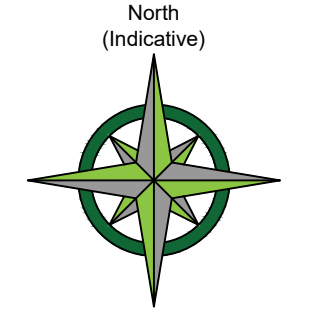


### CATEGORY AND DEFINITION

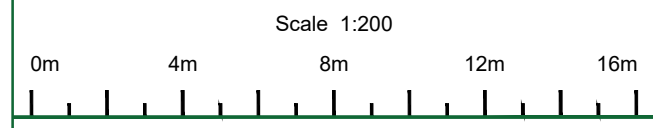
Trees unsuitable for retention	
Category U	Those in such condition that they cannot realistically be retained as living trees in the current land use for longer than 10 years
Trees to be considered for retention	
Category A	Trees of high quality with an estimated remaining life expectancy of at least 40 years
Category B	Trees of moderate quality with an estimated remaining life expectancy of at least 20 years
Category C	Trees of low quality with an estimated remaining life expectancy of at least 10 years, or young trees with a stem diameter below 150mm

**NOTE:**

Hayden's Arboricultural Consultants were provided with a Topographical Survey but these do not always show the positions of all the trees/features on site. The locations of any additional features have been fixed using GPS. As such the position of the trees/landscape features should not be taken as exact but gives a fair distribution of their locations on site.



LEGEND	
	Existing Tree/Feature BS 5837:2012 Category B
	Existing Tree/Hedge to be crown lifted to allow for development
	Existing Tree/Feature BS 5837:2012 Category C
	Existing Tree/Hedge to be crown lifted to allow for development
	Existing Tree/Feature to be removed to allow for development BS 5837:2012 Category C
	Existing Tree/Feature BS 5837:2012 Category U
	Existing Tree/Feature to be removed to allow for development BS 5837:2012 Category U
	Line of Root Protection Area (RPA) - calculated following guidelines set in BS 5837:2012



Date:	23/08/21	By:	HvB	Based on S:\Geomatics\drg no. SJG3312 & Blue Forest drg. no 942_005_Site Layout Plan (101)			
Rev:		Date:		By:		Revision:	

The position, condition, and dimensions of the trees are based on a site survey undertaken on 29/07/21

"The original of this drawing was produced in colour - a monochrome copy should not be relied upon"



5 Moseleys Farm Business Centre  
Fornham All Saints,  
Bury St Edmunds  
Suffolk IP28 6JY

Head Office: 01284 765391  
Southern Office: 01722 657423  
Email: info@treesurveys.co.uk

www.treesurveys.co.uk

Client:	Blue Forest	Drawing Title:	Prelim AIA
Site:	Monks Hall Treehouse, Syleham Road, Eye, Suffolk, IP21 4LN		
Date:	23/08/21	Drawn By:	HvB
Scale:	1:200(A2)	Checked By:	SHO
		Drawn File Ref:	Cli\Pro\8989-D-AIA
		Drawing No.:	8989-D-AIA
		Rev.:	-