

# Extension, St Mewan Primary School

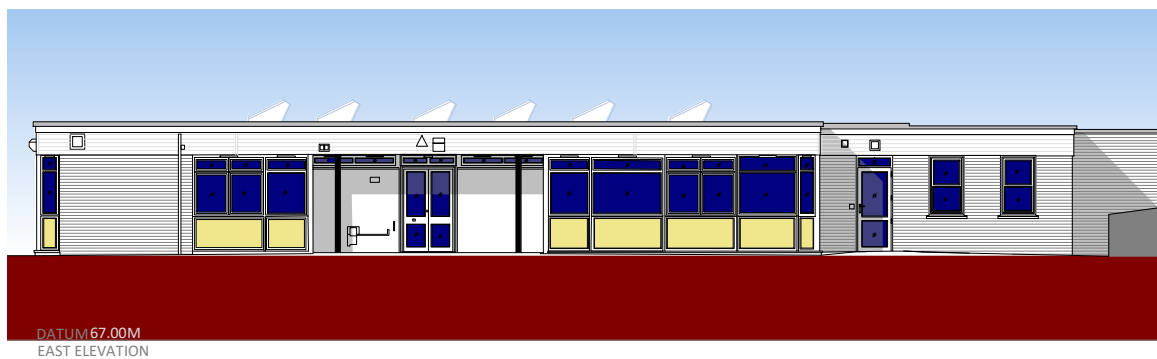
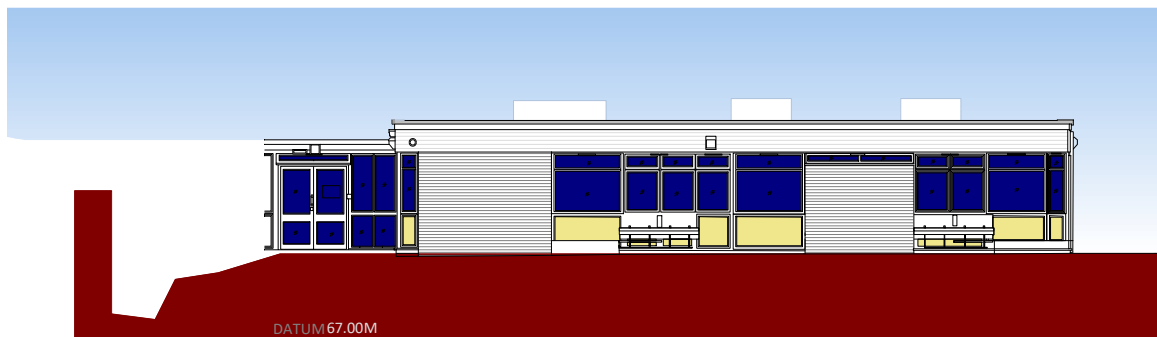
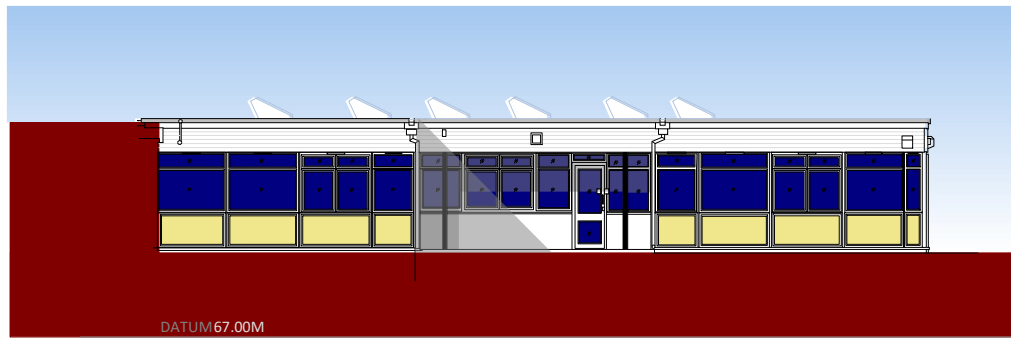
## Design & Access Statement

St Mewan Primary School sits on a sloping site split into 2 levels with a change in level of approximately 1.3m and with a total change in level between the main car park and the upper school level of approximately 4.8m. The main entrance is approximately 3.5m above the main car park level and is linked by a flight of steps. Designated disabled car parking spaces are located in a service area providing level access to the main entrance.

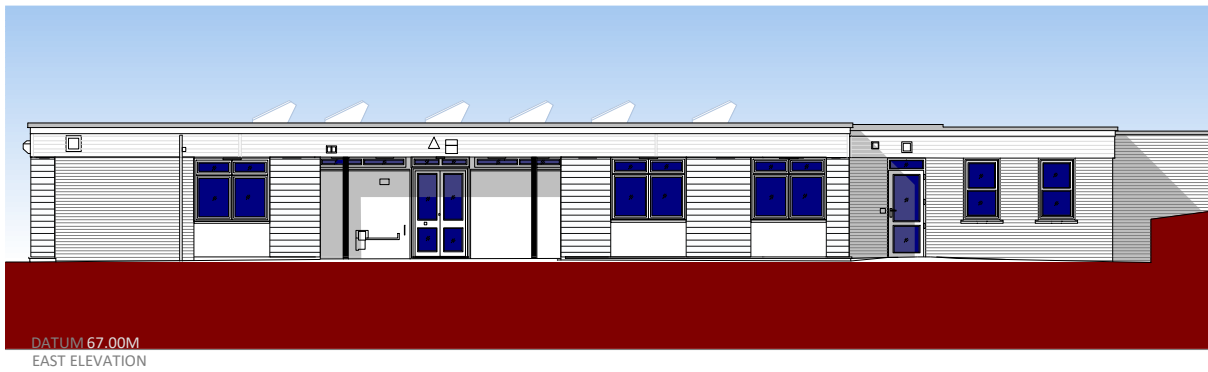
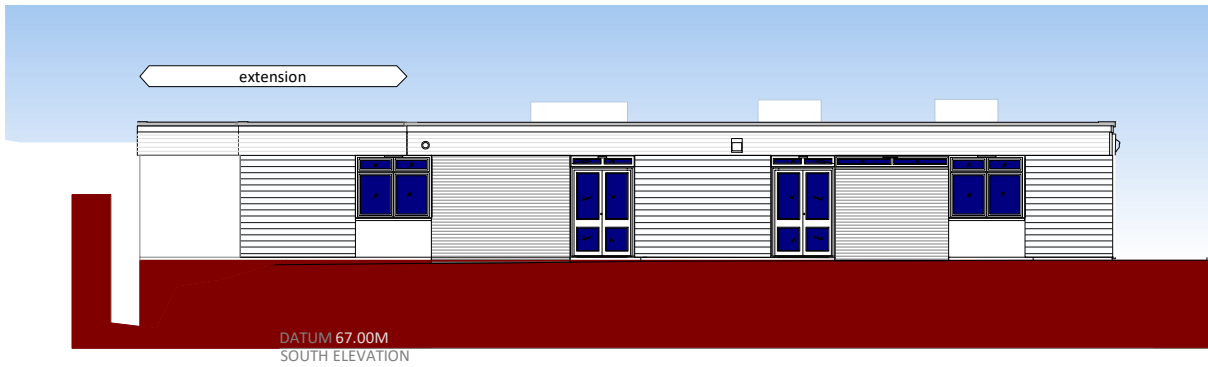
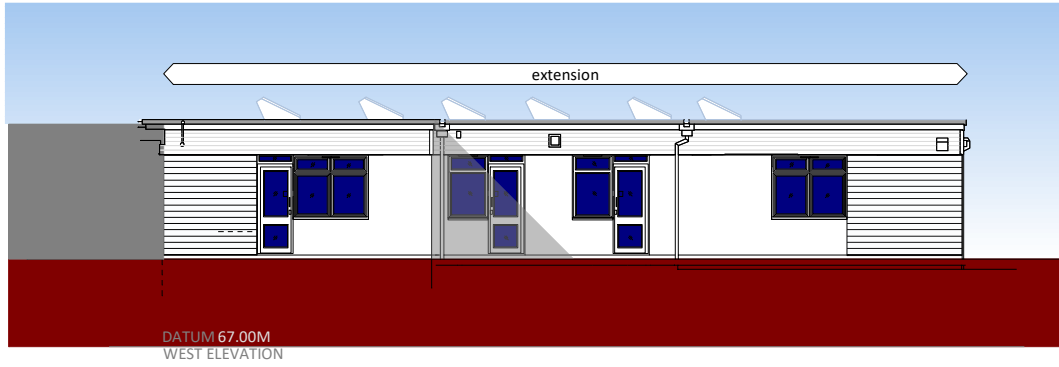


An extension is proposed to the upper school level. A path around the south side of the school with an average gradient of approximately 1:17 without steps provides disabled access from the main car park to the upper school accommodation which is to be provided with external doors with level access thresholds.

The existing building to be extended is a light steel framed flat roof building. The extension will repeat the existing design in terms of scale and materials.



## EXISTING ELEVATIONS



PROPOSED ELEVATIONS

Roger Hocking Dip Arch RIBA

CAD ARCHITECTS LTD

081021