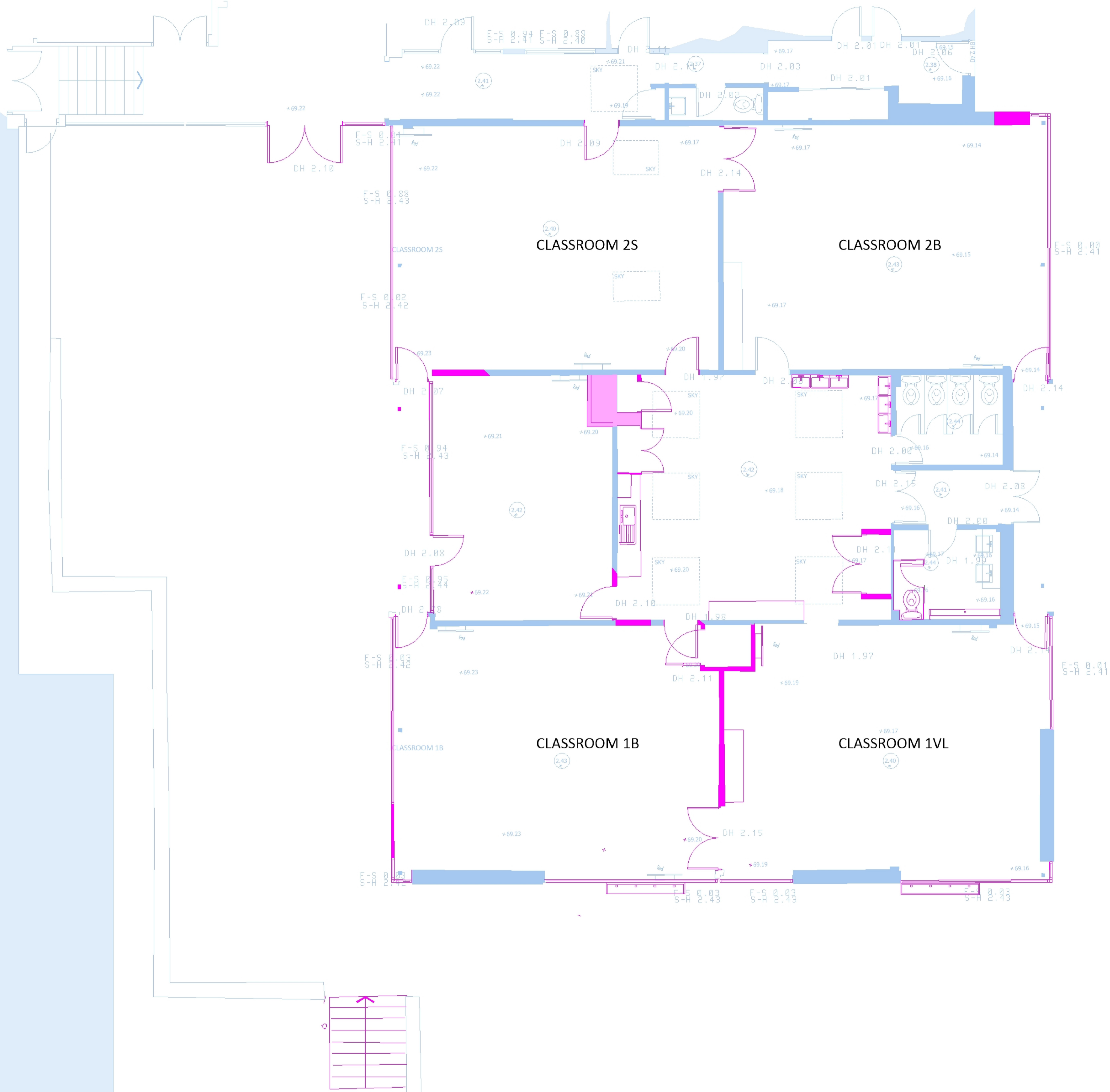


construction to be removed
 construction to be retained



CAD ARCHITECTS

CAD ARCHITECTS LTD
 COURTLEIGH HOUSE, 74-75 LEMON STREET
 TRURO, CORNWALL, TR1 2PN
 CALL: 01872 630 040
 MAIL: studio@cadarchitects.co.uk
 WEB: www.cadarchitects.co.uk

RIBA Chartered Practice

EXTENSION
 ST MEWAN PRIMARY SCHOOL
 C.E.L.T.
 GROUND FLOOR AS EXISTING

250621
 1:50 @ A1

PLANNING 2907.C.3