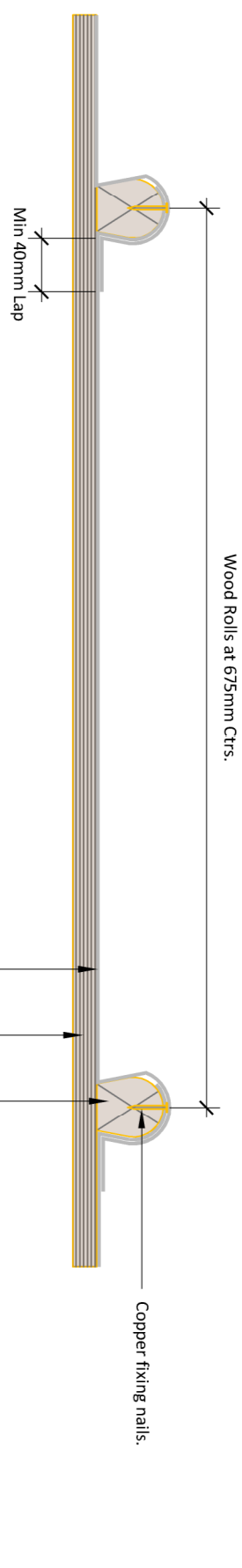


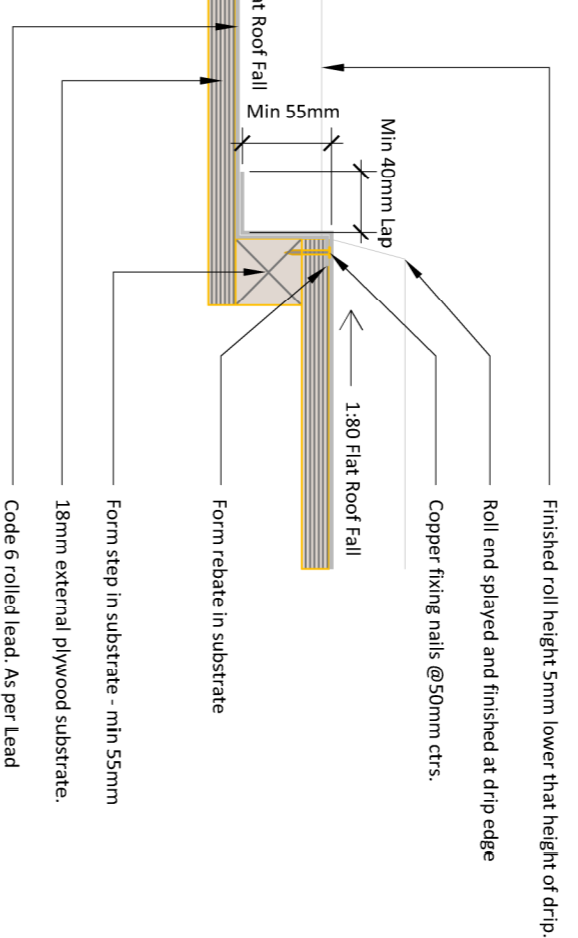
The list below identifies certain risks but does not cover all possible unusual etc situations which may arise during the construction of this project. It is the responsibility of the contractor to identify any further risks / hazards and take appropriate action.

Risks / Hazards particular to this drawing are listed below in numerical references, please refer to the system for further action.

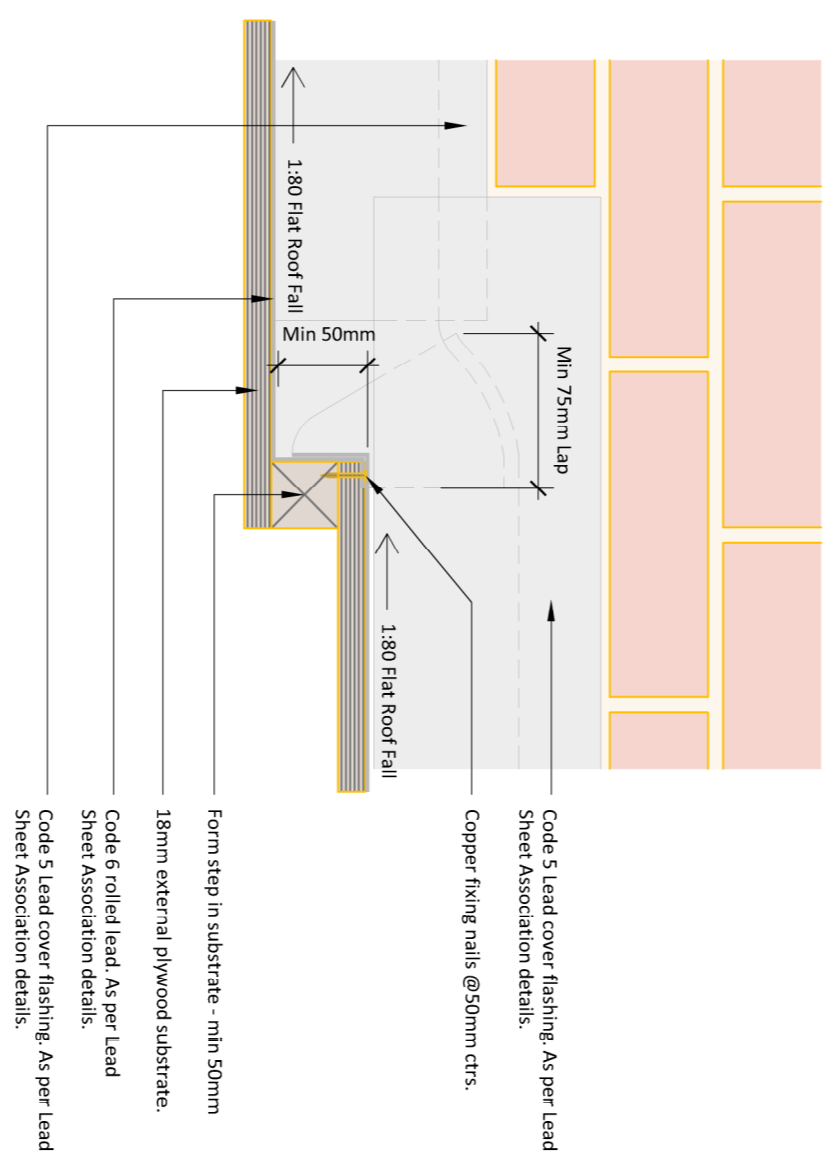
#####



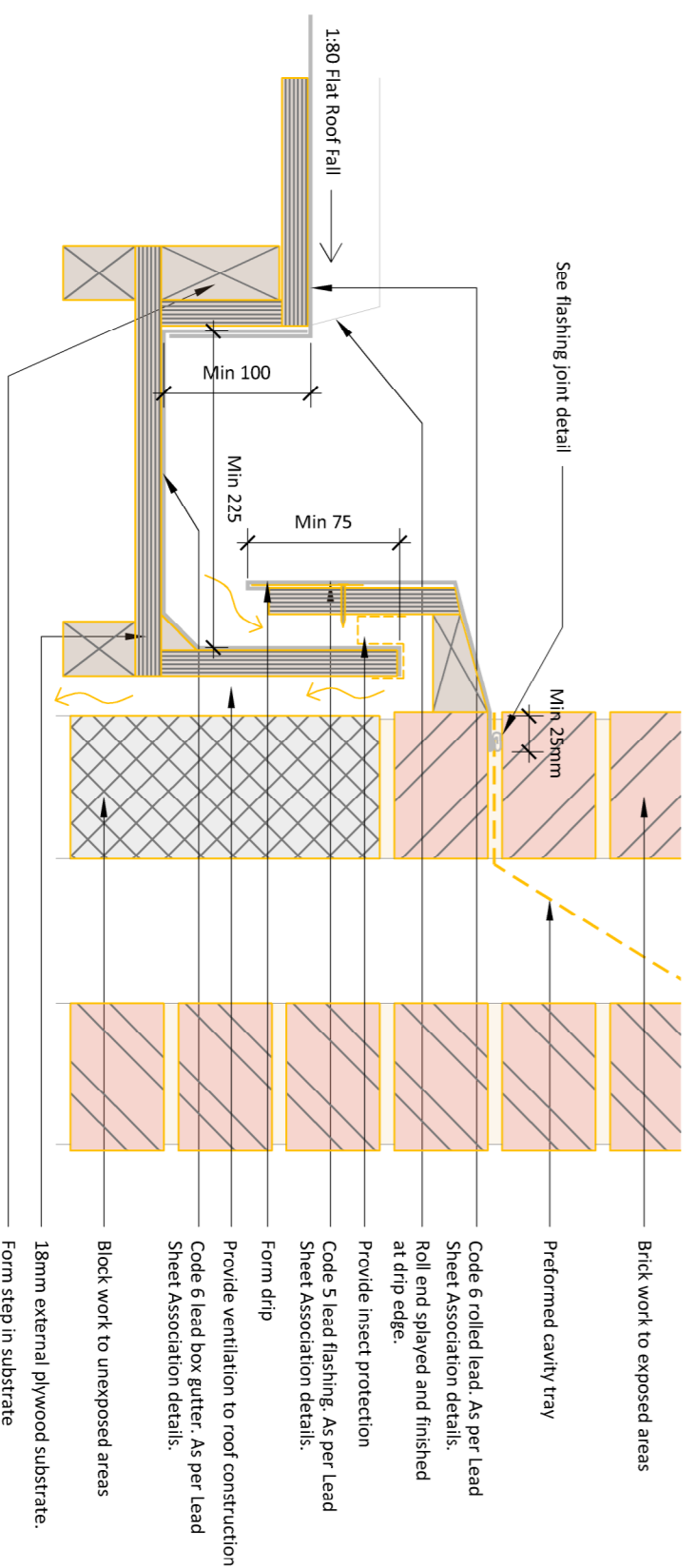
Lead Roll Detail
Scale 1:5



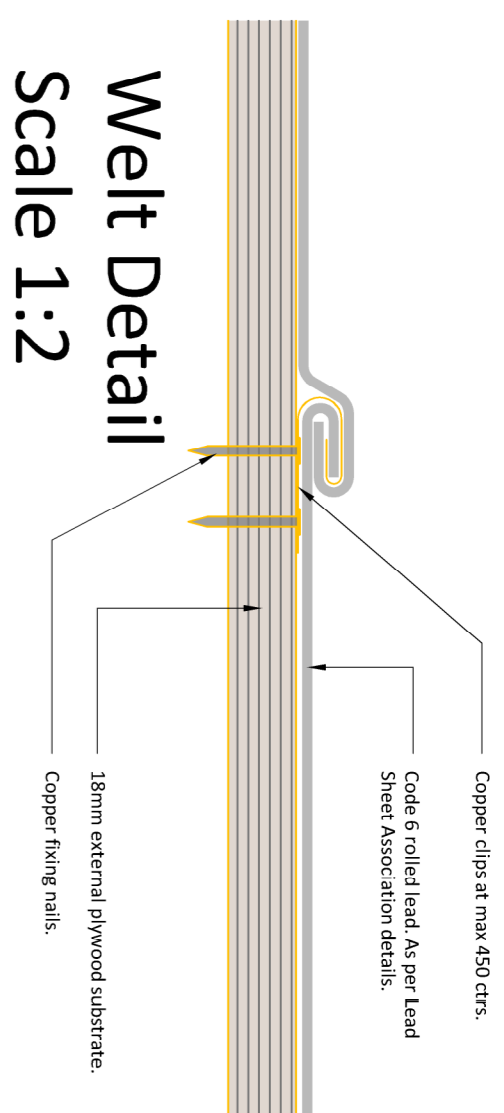
Drip Step to Main Roof Slope Detail
Scale 1:5



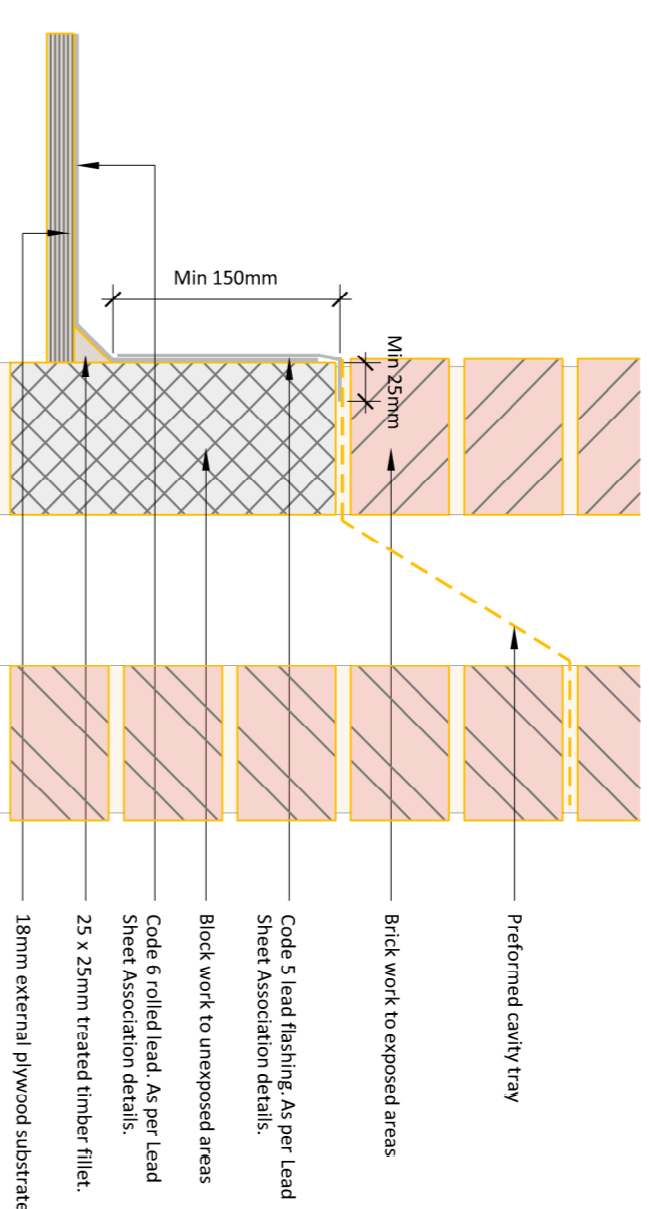
Drip Step to Box Gutter Detail
Scale 1:5



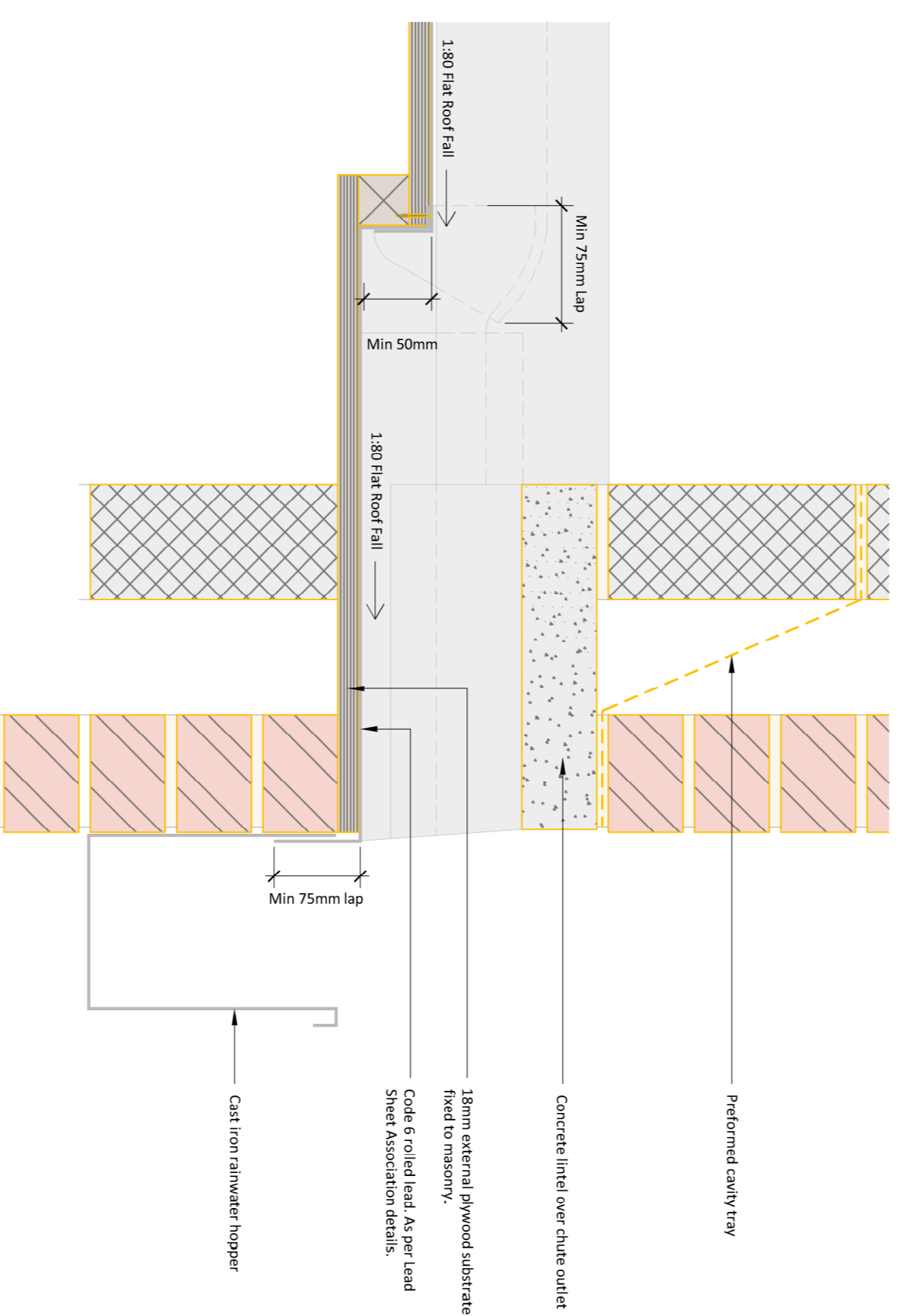
Box Gutter Detail
Scale 1:5



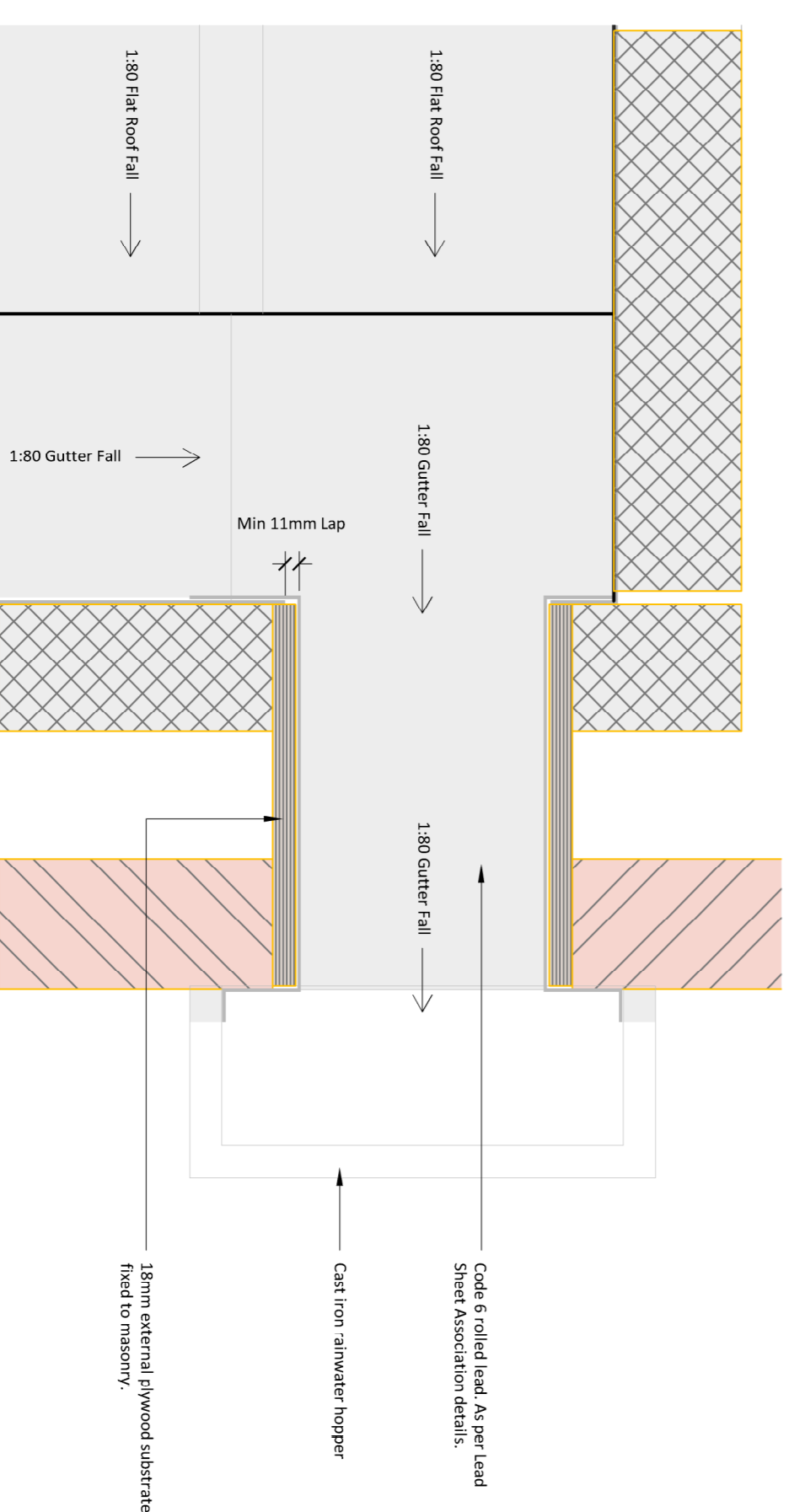
Welt Detail
Scale 1:2



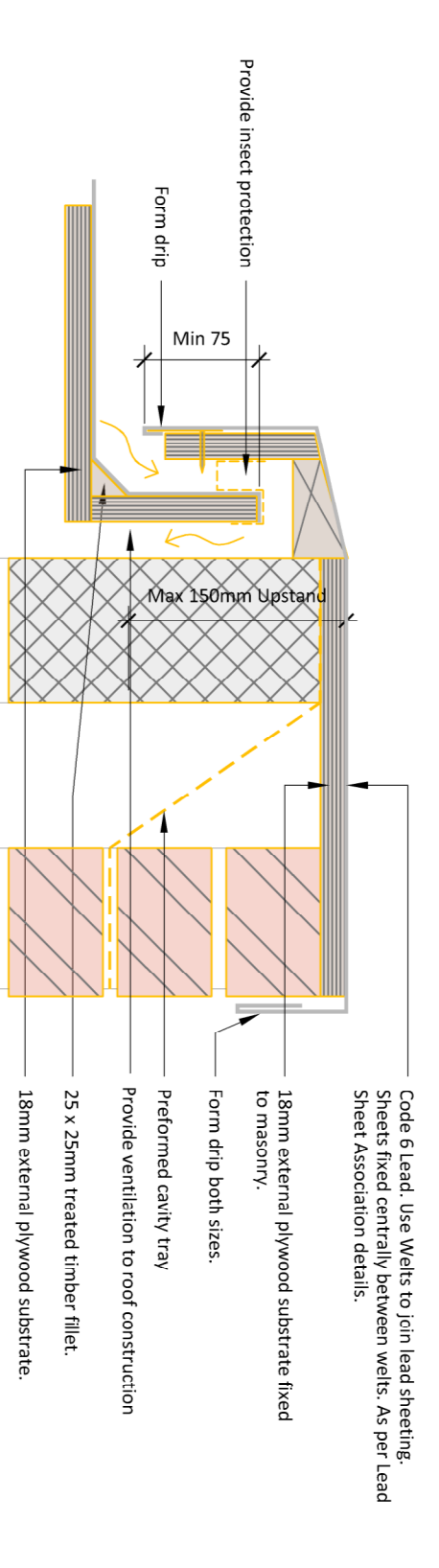
Abutment Detail
Scale 1:5



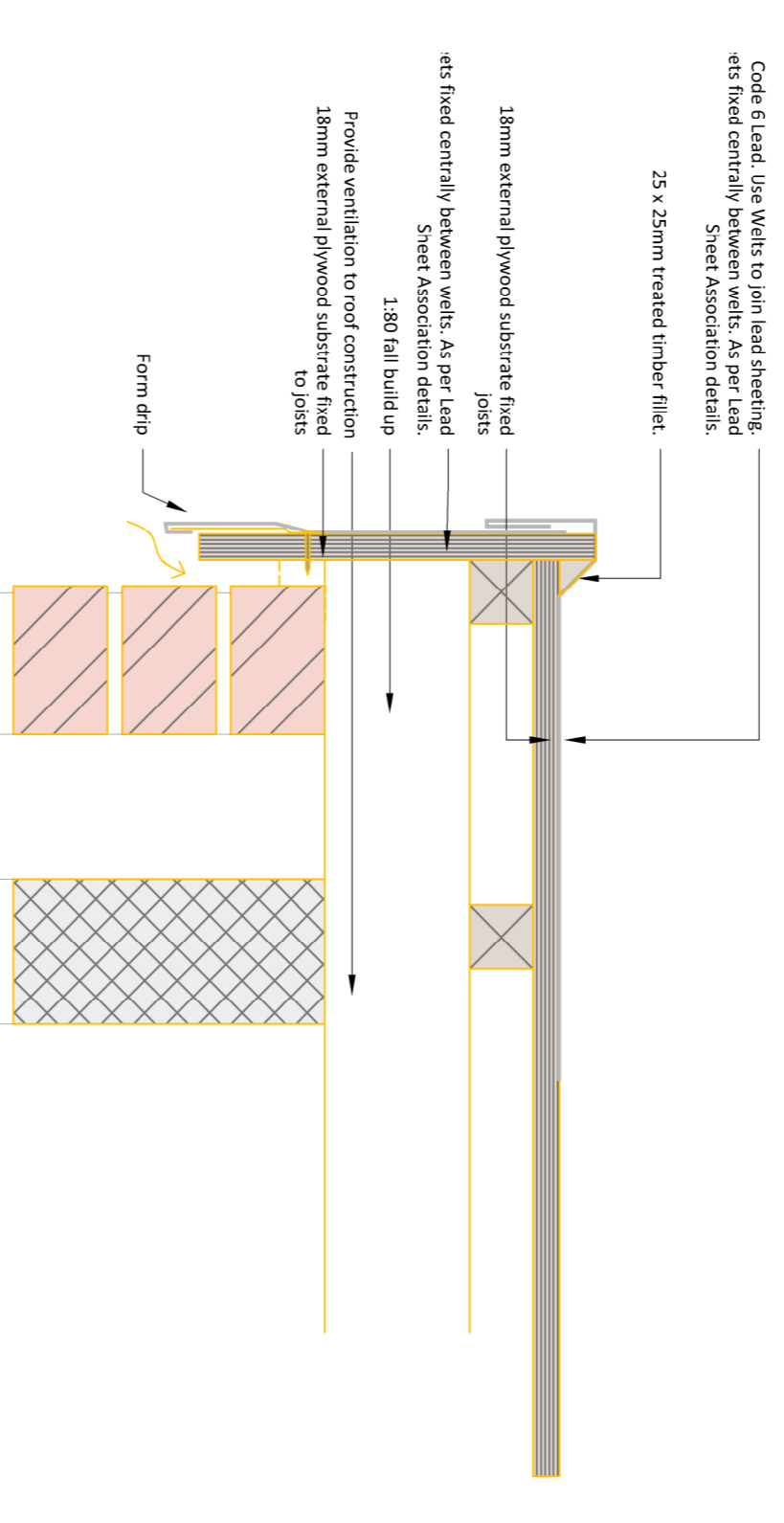
Rainwater Chute Outlet Detail
Scale 1:5



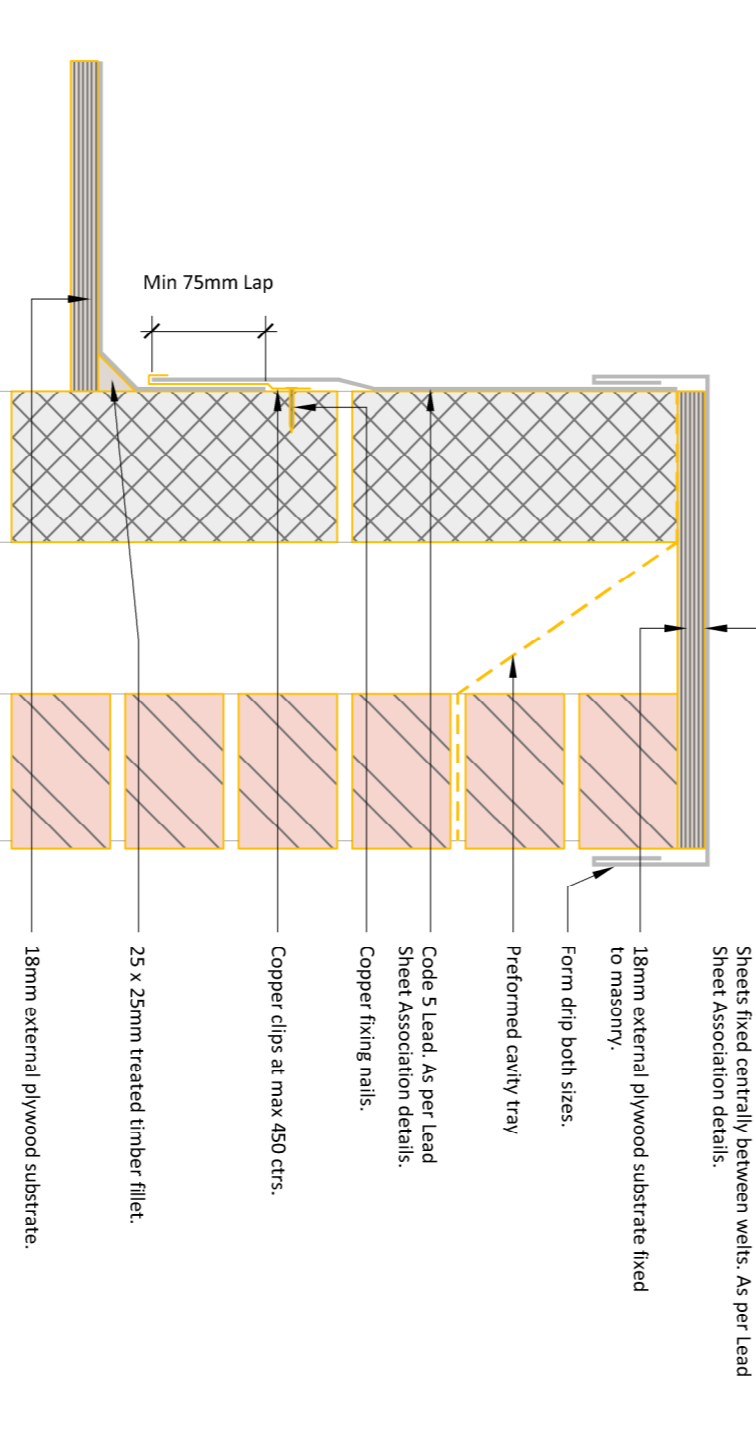
Rainwater Chute Outlet Detail - Plan
Scale 1:5



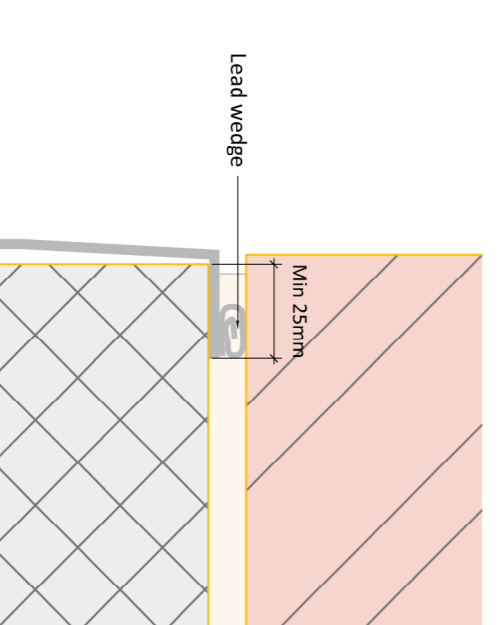
Parapet Weathering Detail with Ventilation
Scale 1:5



Fascia Detail
Scale 1:5



Extended parapet weathering
Scale 1:5



Flashing Joint Detail
Scale 1:2

Rev	Date	Drawn	Description	Checked
A	26.10.21	CC	Fascia Detail added. Flashing joint added. Chute outlet amended. Ventilation details added.	
B	16.11.21	CC		

PRELIMINARY

Client: Ebor Construction Ltd
Project: Extension to 28 Gylgate, York
Title: Proposed Typical Lead Roof Details

Drawing Number: Y-SB-BSP-09538-21-1201
Revision: B

Issued From: York
Date: Oct/2021
Scale: 1:2 / 1:5 @ A1
Drawn: CC Admin

UHC Group Property and Construction Consultants
The Chocolate Works, Suite 2
Bishopthorpe Road, Harrogate, North Yorkshire YO23 1DE
HQ13 02Z
Type: Domestic
01504 600699
01482 215999
www.uhcgroup.co.uk

Offices also in:
The Riverside Building, Harrogate, North Yorkshire YO23 1DE
HQ13 02Z
Type: Domestic
01504 600699
01482 215999
www.uhcgroup.co.uk

Notes on this drawing:
1. This drawing is complete and ready for construction.
2. It is the responsibility of the contractor to ensure that the work is carried out in accordance with the drawing and to take appropriate action to ensure the safety of the work.

