

Fascia Sign 1
 Aluminium pan sign, 1816x2285x50mm
 Powder coated steel back with
 digitally printed vinyl logo applied
 as shown. Externally illuminated via
 trough light decorated RAL9005 Black.



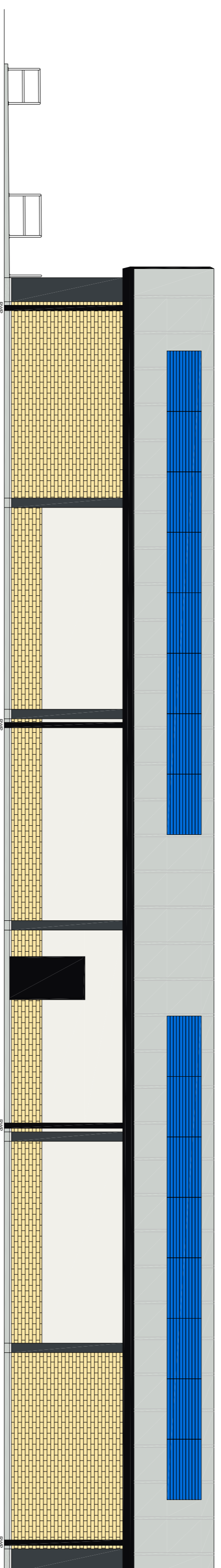
SOUTH ELEVATION

Boundary Condition: Southern Elevation:
 100% unprotected boundary area. Minimum Steamwater 120 to achieve 120min fire rating. Cladding to achieve minimum of 60min fire rating. Cladding on this elevation to be Kingspan K51000 Micro-Rib panels 100mm thick horizontally laid.
 U value 0.19 W/m²K

Fascia sign 2
 Aluminium pan sign, 640x2285x50mm
 digitally printed vinyl logo applied
 as shown. Externally illuminated via
 trough light decorated RAL9005 Black.

WEST ELEVATION

Boundary Condition: Western Elevation:
 100% unprotected boundary area. Minimum Steamwater 120 to achieve 120min fire rating. Cladding to achieve minimum of 60min fire rating. Cladding on this elevation to be Kingspan K51000 Micro-Rib panels 100mm thick horizontally laid.
 U value 0.19 W/m²K



NORTH ELEVATION

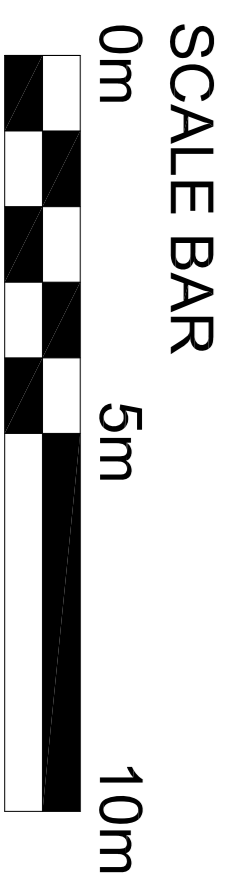
Boundary Condition: Northern Elevation:
 100% unprotected boundary area. Minimum Steamwater 120 to achieve 120min fire rating. Cladding to achieve minimum of 60min fire rating. Cladding on this elevation to be Kingspan K51000 Micro-Rib panels 100mm thick horizontally laid.
 U value 0.19 W/m²K

EAST ELEVATION

Boundary Condition: Eastern Elevation:
 100% unprotected boundary area. Minimum Steamwater 120 to achieve 120min fire rating. Cladding to achieve minimum of 60min fire rating. Cladding on this elevation to be Kingspan K51000 Micro-Rib panels 100mm thick horizontally laid.
 U value 0.19 W/m²K

MATERIALS

- WALL CLADDING – K51000 MICRO-RIB COMPOSITE PANEL CLADDING COLOUR WHITE/GREY (RAL 9002)
- RENDER PANELS – K REND SILICONE THROUGH COLOUR RENDER, COLOUR STIRLING WHITE
- HIGH LEVEL PANELS – ROCKPANEL WOODS SLATE OAK
- BRICKWORK PANELS – BESTOCK BUFF BRICK SLIPS OR SIMILAR TO MATCH EXISTING HOUSES
- COLUMN CASING – KINGSFAN FLAT COMPOSITE PANEL CLADDING COLOUR ANTHRACITE (RAL 7016)
- ROOF – KINGSFAN K51000RW COMPOSITE PANEL COLOUR GOOSEWING GREY (BS 00 A 05)
- GUTTERS & DOWN PIPES – ALUMINIUM GUTTERS & DOWN PIPES COLOUR JET BLACK (RAL 9005)
- FASCIA & SOFFITS – PRESSED METAL COLOUR JET BLACK (RAL 9005)
- DOOR FRAMES, DOORS AND WINDOW FRAMES – POWDER COATED JET BLACK (RAL 9005)
- ROLLER SHUTTERS – POWDER COATED RAL 9005 (JET BLACK) SOLID LATHE UP TO 1m AFFL. PERFORATED LATH FROM 1m TO 2m AFFL AND SOLID LATHE ABOVE.



CPLC
 ASSOCIATES
 The Building, 87A Station Road
 Bishop Cleeve, Cheshire, SK2 5PL

Tel: 01242 672333 Fax: 01242 672555
 Email: cplc@cplc-associates.com

Project/Client: Farmfoods Limited – 320 Peat Road, Pollock, Lancashire, G53 6SB.
 Drawing: Proposed Elevations
 Scale: 1:100@A1
 Project No: 1772
 Drawing No: EL
 Revision: J
 Date: 23.08.2016
 Checked By: J

1	15.11.2021	Site plan amended to comments.	DMW
2	04.10.2021	Site plan amended to comments.	DMW
3	18.06.2021	Additional Fire Escape Added.	DMW
4	18.06.2021	Additional Fire Escape Added.	DMW
5	03.06.2020	Wood cladding reference corrected to Rousseau Woods Slate Oak.	DMW
6	16.04.2020	Material reference corrected to Material as details comments.	DMW
7	16.04.2020	Material reference corrected to details comments.	DMW
8	02.04.2020	Comments and panels and section added.	DMW
9	24.03.2020	Elevation amended to latest site plan.	DMW
A	24.03.2020	Elevation amended to latest site plan.	DMW

© CPLC Associates Ltd. Computer generated work. Speed elevations unless and to the extent on file. Any discrepancies must be reported immediately.