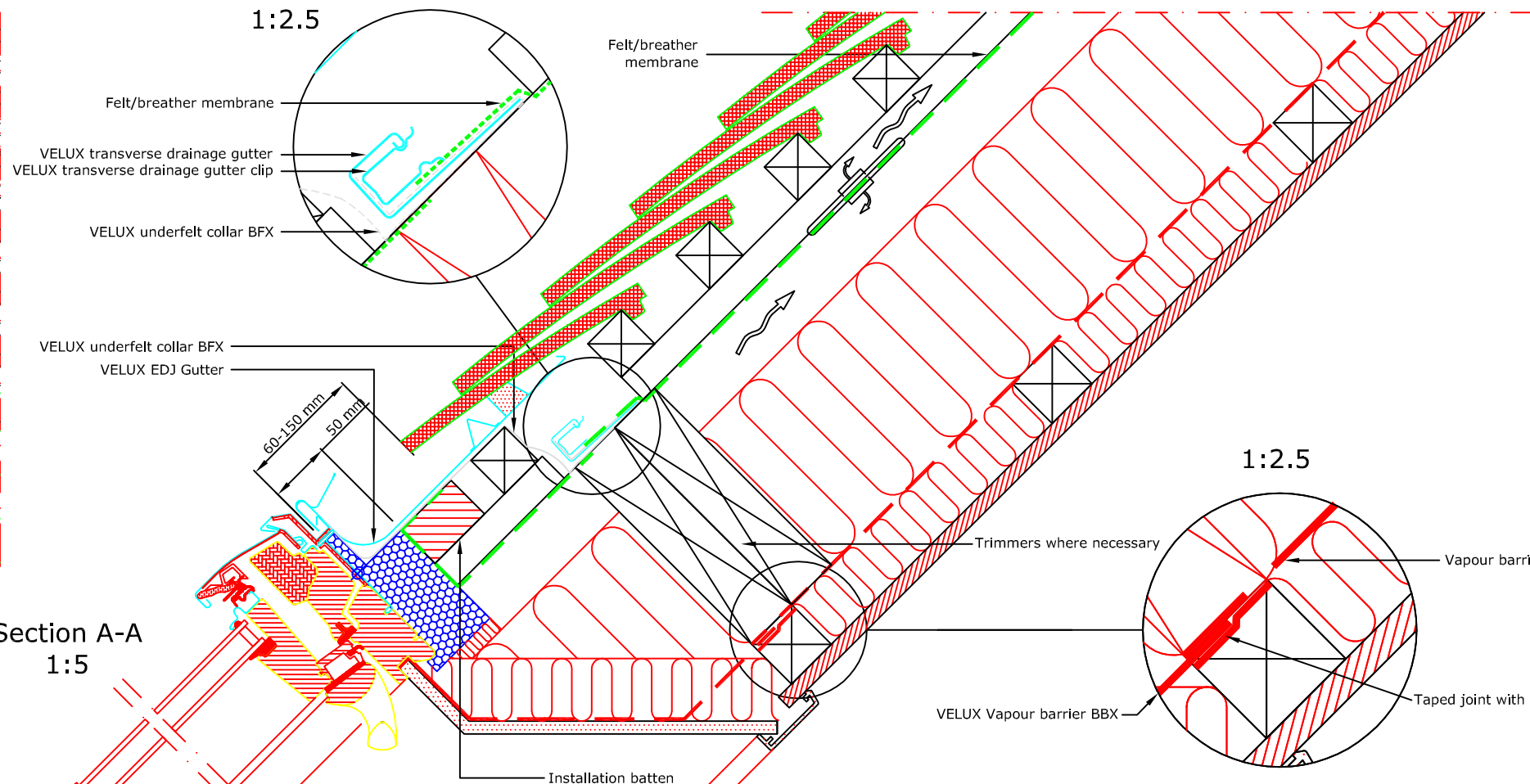


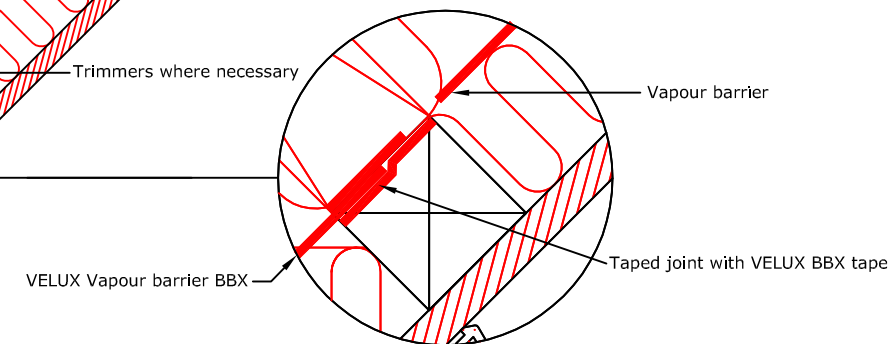
TYPICAL ELEVATION








Section A-A  
1:5

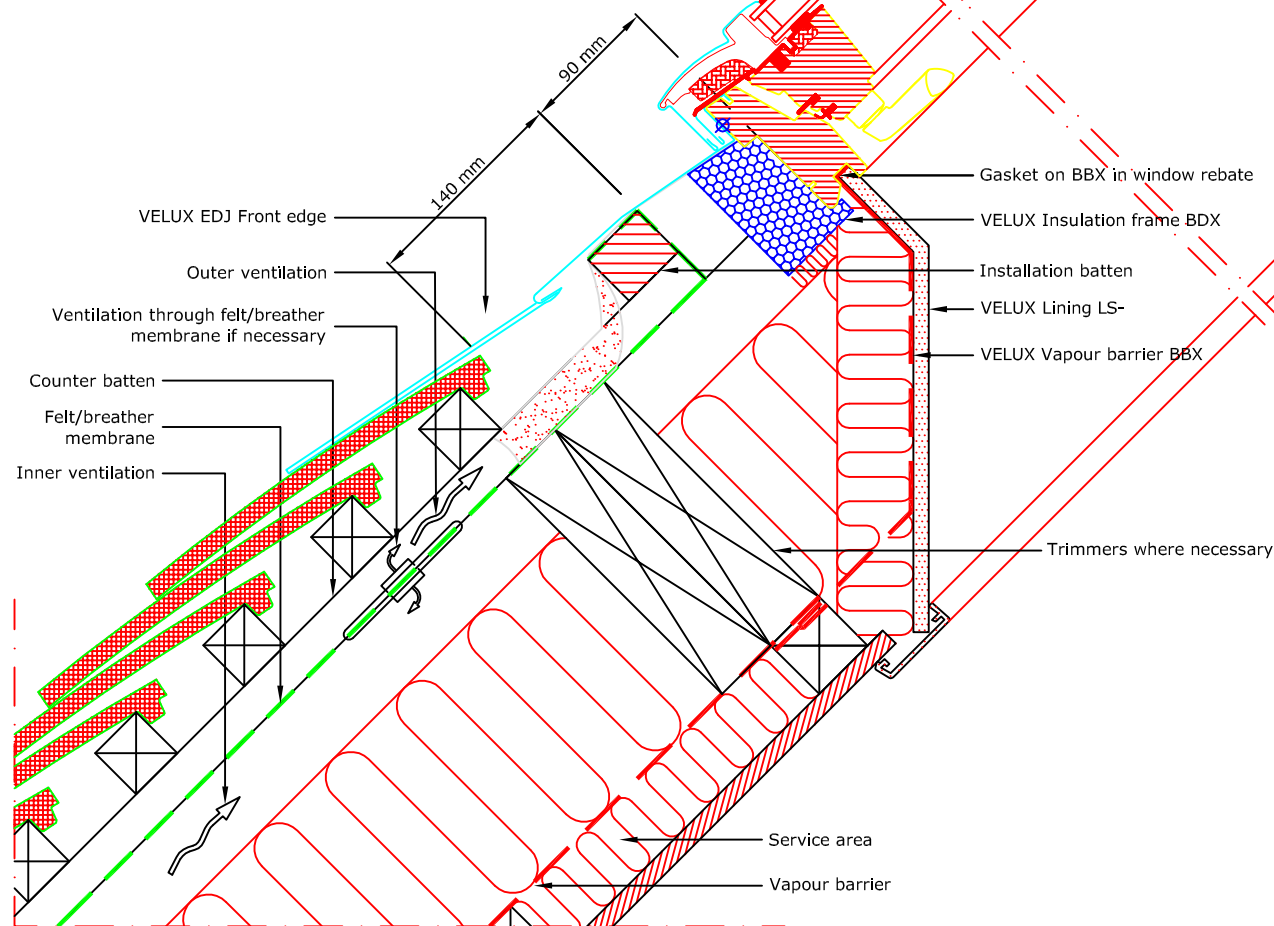
1:2.5



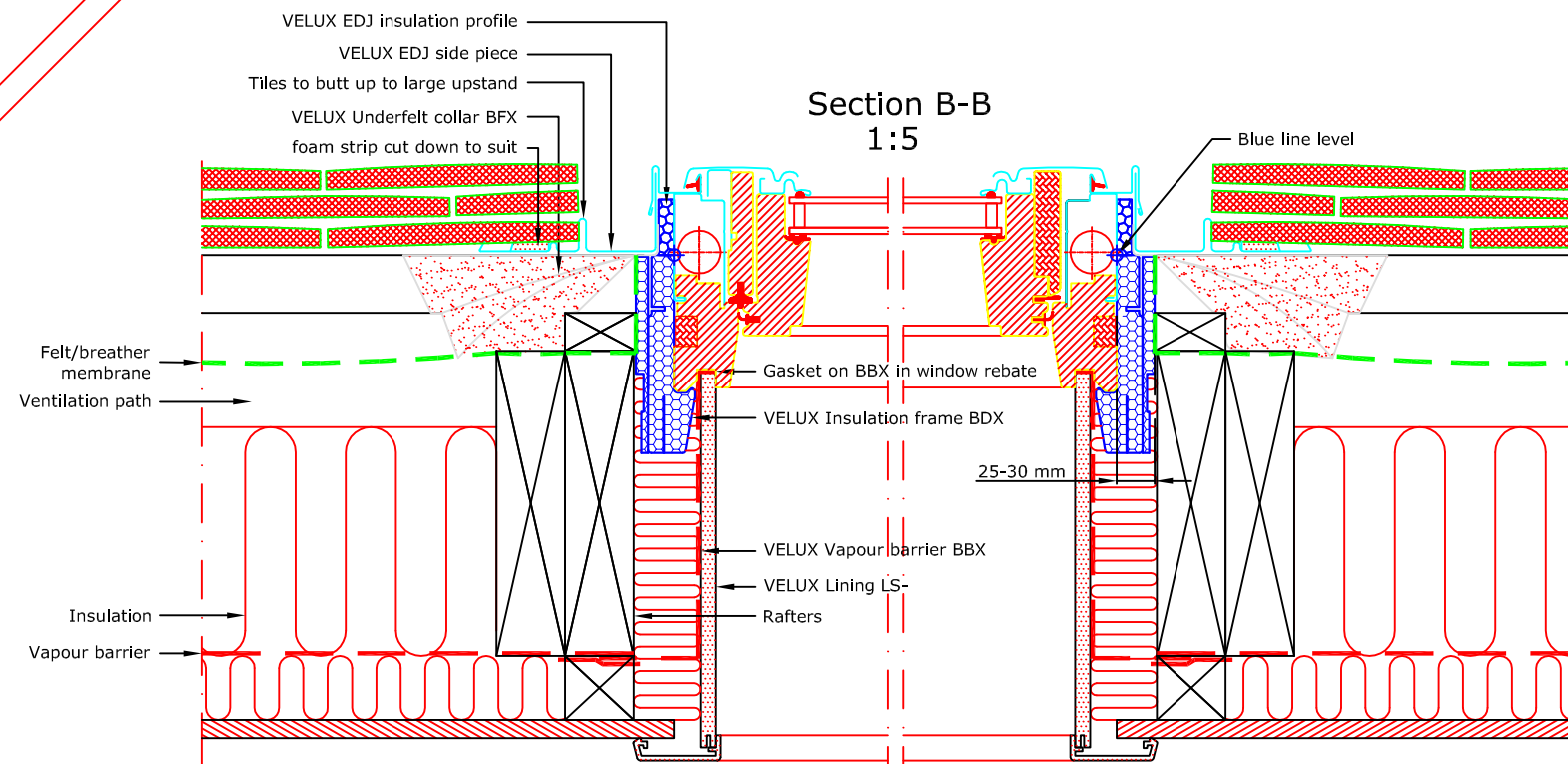
1:2.5



- VELUX Products:
-  GPL  
15°-55° \*  
\* 55°-75° with special springs
  -  EDJ  
20°-90°
  -  BFX
  -  BDX
  -  BBX
  -  LS-
- Roof covering:
-  PLAIN TILES  
< 15 mm



Section B-B  
1:5



VELUX Company Ltd  
Woodside Way  
Glenrothes, Fife KY7 4ND  
tel: +44 (0) 1592 778 225

VELUX top-hung roof window  
**GPL single installation into plain tile**  
EDJ flashing kit - recessed install for tiles up to 90mm thick  
*All dimensions are in millimetres where shown*

NOTE! When installing VELUX roof windows, flashings and accessories, please ensure compliance with building regulations and British/European standards where necessary. This detail represents the principles of a typical installation only and the design and specification of the final detail is the responsibility of others.

Latest revision:

Date: **January 2014**  
Rev no:  
Rev date:  
Drawn: **PJH**

File name:  
**GPL-EDJ-0114-1113**  
Scale: **1:5 approx. @ A3**