

**U&I Fixture Legend**

- Beams
- Building Use
- Columns
- Fireplaces
- SSPH
- Walls
- Windows
- Partitions

**U&I Fixture Legend**

- Door
- Door
- Door
- Door
- Door

**U&I Fixture Legend**

- Fire Alarm (break glass)
- Fire Alarm
- Fire Alarm
- Fire Alarm
- Fire Alarm

**U&I Fixture Legend**

- Fire Alarm
- Fire Alarm
- Fire Alarm
- Fire Alarm
- Fire Alarm

**U&I Fixture Legend**

- Fire Alarm
- Fire Alarm
- Fire Alarm
- Fire Alarm
- Fire Alarm

**U&I Fixture Legend**

- Fire Alarm
- Fire Alarm
- Fire Alarm
- Fire Alarm
- Fire Alarm

**U&I Fixture Legend**

- Fire Alarm
- Fire Alarm
- Fire Alarm
- Fire Alarm
- Fire Alarm

**U&I Fixture Legend**

- Fire Alarm
- Fire Alarm
- Fire Alarm
- Fire Alarm
- Fire Alarm

**U&I Fixture Legend**

- Fire Alarm
- Fire Alarm
- Fire Alarm
- Fire Alarm
- Fire Alarm

**U&I Fixture Legend**

- Fire Alarm
- Fire Alarm
- Fire Alarm
- Fire Alarm
- Fire Alarm

**U&I Fixture Legend**

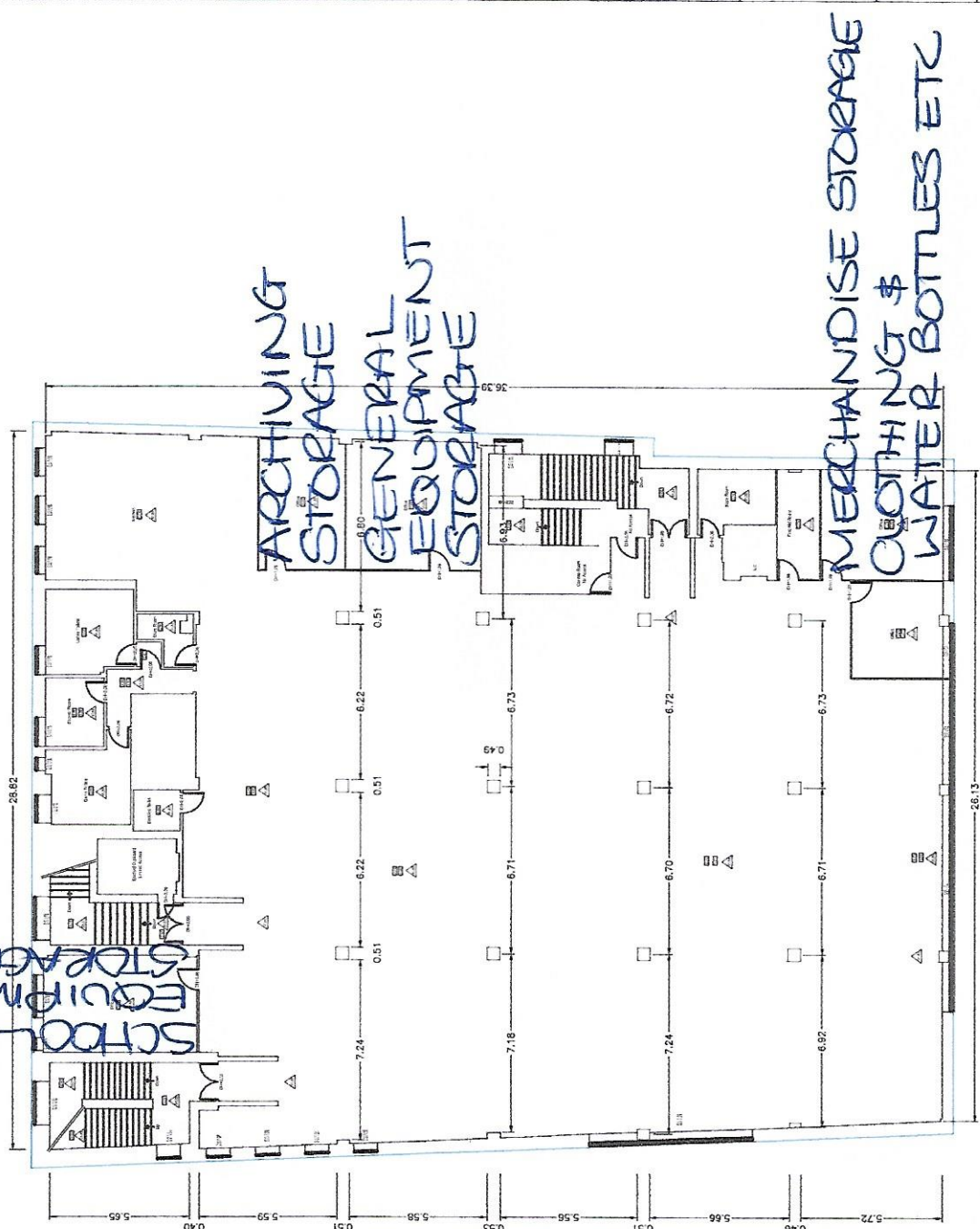
- Fire Alarm
- Fire Alarm
- Fire Alarm
- Fire Alarm
- Fire Alarm

**U&I Fixture Legend**

- Fire Alarm
- Fire Alarm
- Fire Alarm
- Fire Alarm
- Fire Alarm

**U&I Fixture Legend**

- Fire Alarm
- Fire Alarm
- Fire Alarm
- Fire Alarm
- Fire Alarm



Second Floor  
 NO CHANGES - OPEN FLOOR FULLY COACHED  
 FITNESS STUDIO  
 EXISTING ROOMS/OFFICES WILL REMAIN

Notes:  
Horizontal Control points are relative to a LOCAL GRID.  
All levels are relative to FINISH FLOOR DATA.

ALL dimensions were obtained using the THREE VES angle method.  
CONTROL STATION COORDINATES

STATION	EASTING	NORTHING	LEVEL

**Aspect**  
 Land + Hydrographic Surveys  
 CHARTERED SURVEYORS  
 The Survey Centre  
 175 New Road  
 Tel: 01294 313399    Fax: 01294 313399  
 Email: info@aspect.co.uk  
 Web: www.aspect.co.uk

FAIRHURST  
 225 BATH STREET  
 GLASGOW  
 G2 4EZ

Project No.	AGMS	Scale	1:100