

Appendix 03
Public Information

Molendinar Burn is a river (ID: 10047), in the Glasgow Coastal catchment of the Scotland river basin district. The main stem is approximately 9.3 kilometres in length. The water body has been designated as a heavily modified water body on account of physical alterations that cannot be addressed without a significant impact from an increased risk of subsidence or flooding.

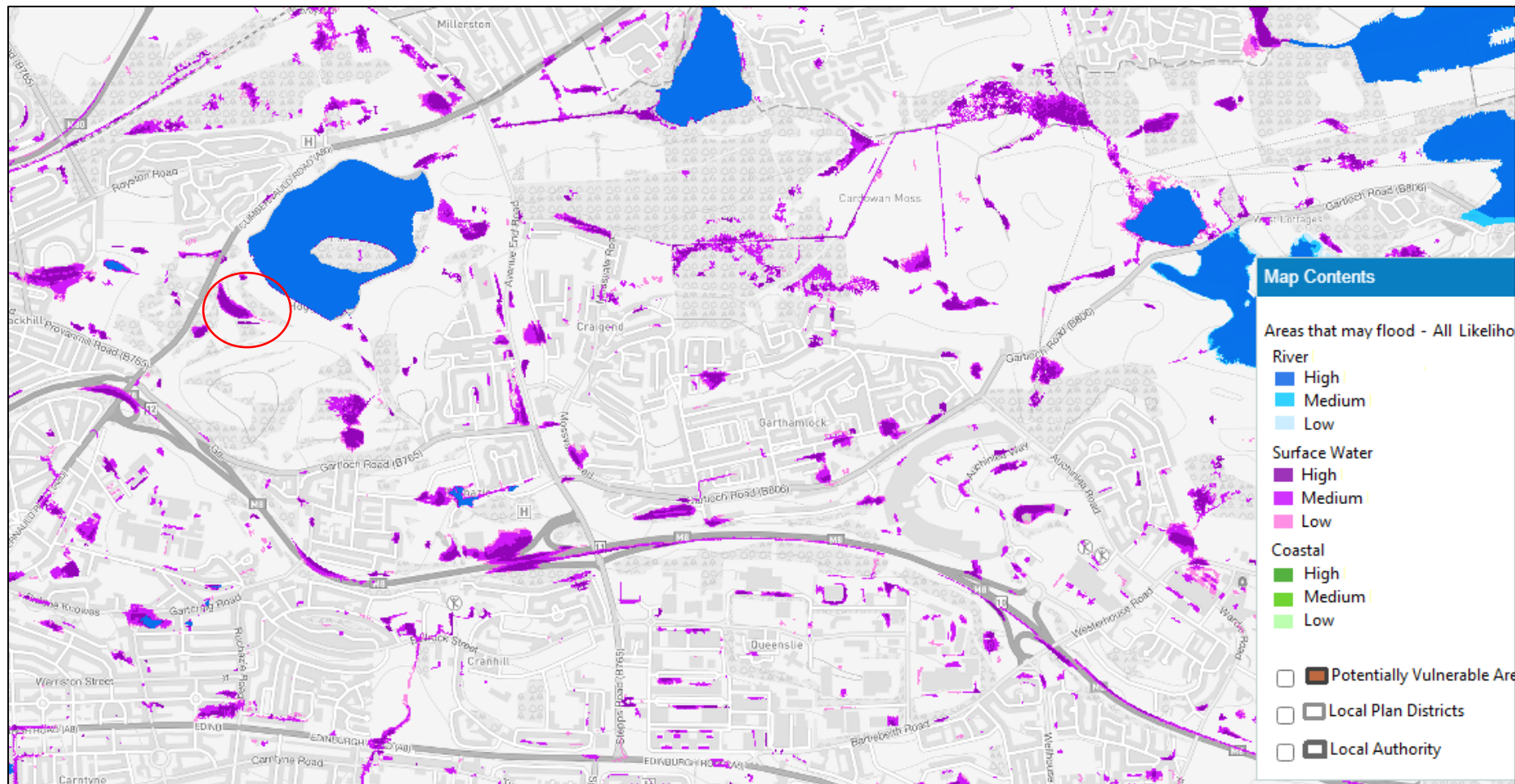
Condition in 2014 and future objectives

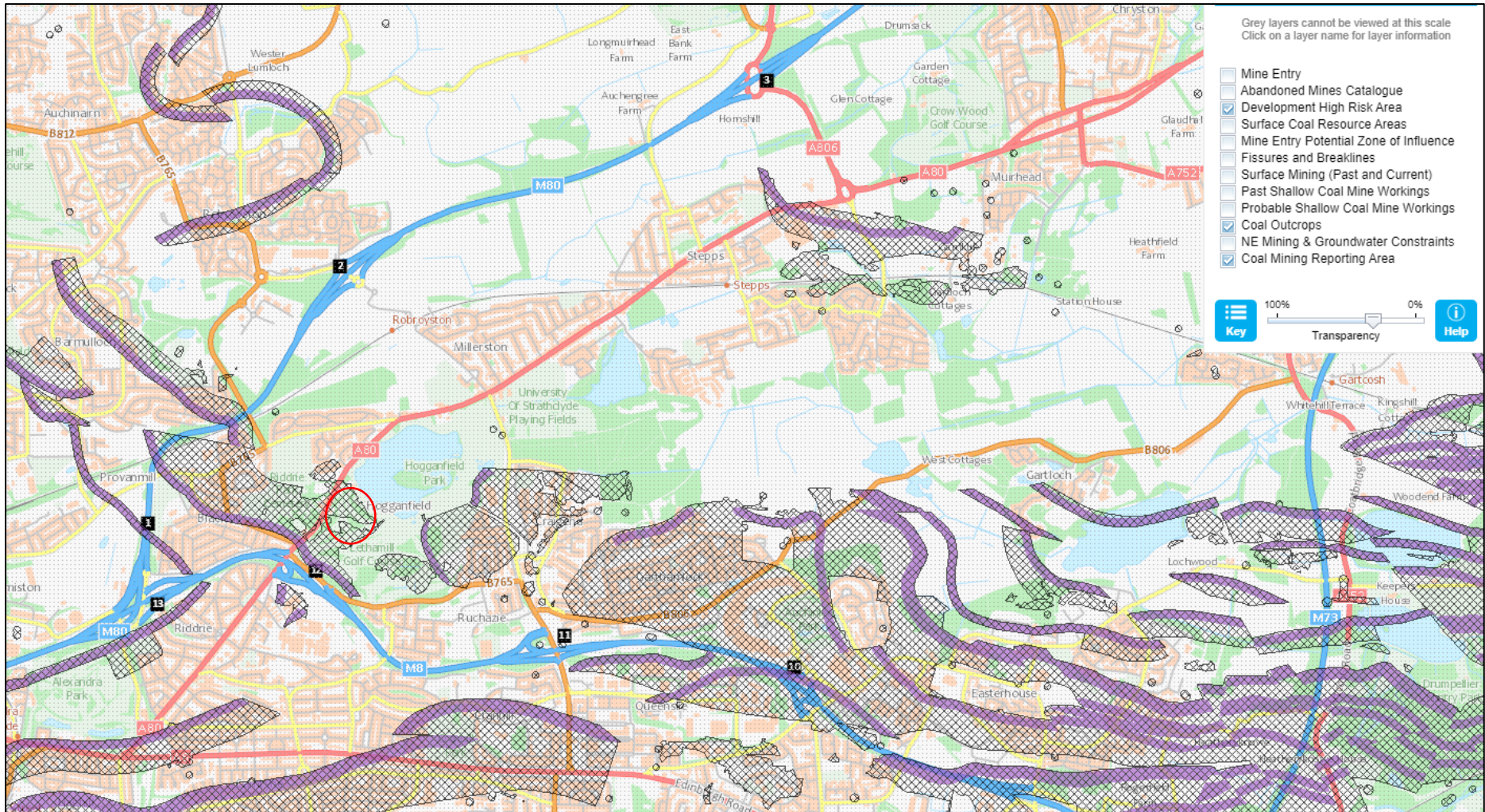
	2014	2021	2027	Long Term
Overall	Poor	Poor	Moderate	Good
Access for fish migration	High	High	High	High
Water flows and levels	High	High	High	High
Physical condition	Poor	Good	Good	Good
Freedom from invasive species	High	High	High	High
Water quality	Moderate	Moderate	Moderate	Good

Glasgow and Motherwell is a groundwater (ID: 150677), in the Scotland river basin district. It is 514.8 square kilometres in area.

Condition in 2014 and future objectives

	2014	2021	2027	Long Term
Overall	Poor	Poor	Poor	Poor
Water flows and levels	Poor	Poor	Good	Good
Water quality	Poor	Poor	Poor	Poor





Grey layers cannot be viewed at this scale
Click on a layer name for layer information

- Mine Entry
- Abandoned Mines Catalogue
- Development High Risk Area
- Surface Coal Resource Areas
- Mine Entry Potential Zone of Influence
- Fissures and Breaklines
- Surface Mining (Past and Current)
- Past Shallow Coal Mine Workings
- Probable Shallow Coal Mine Workings
- Coal Outcrops
- NE Mining & Groundwater Constraints
- Coal Mining Reporting Area

