

Project Datum

All levels and coordinates are related to the Ordnance Survey national grid by means of GPS using the Leica Smartnet RTK network. One survey control point has been fixed using GPS and then the survey orientated to an additional GPS point. No scale factor has been applied therefore only the fixed GPS point is a true Ordnance Survey position.

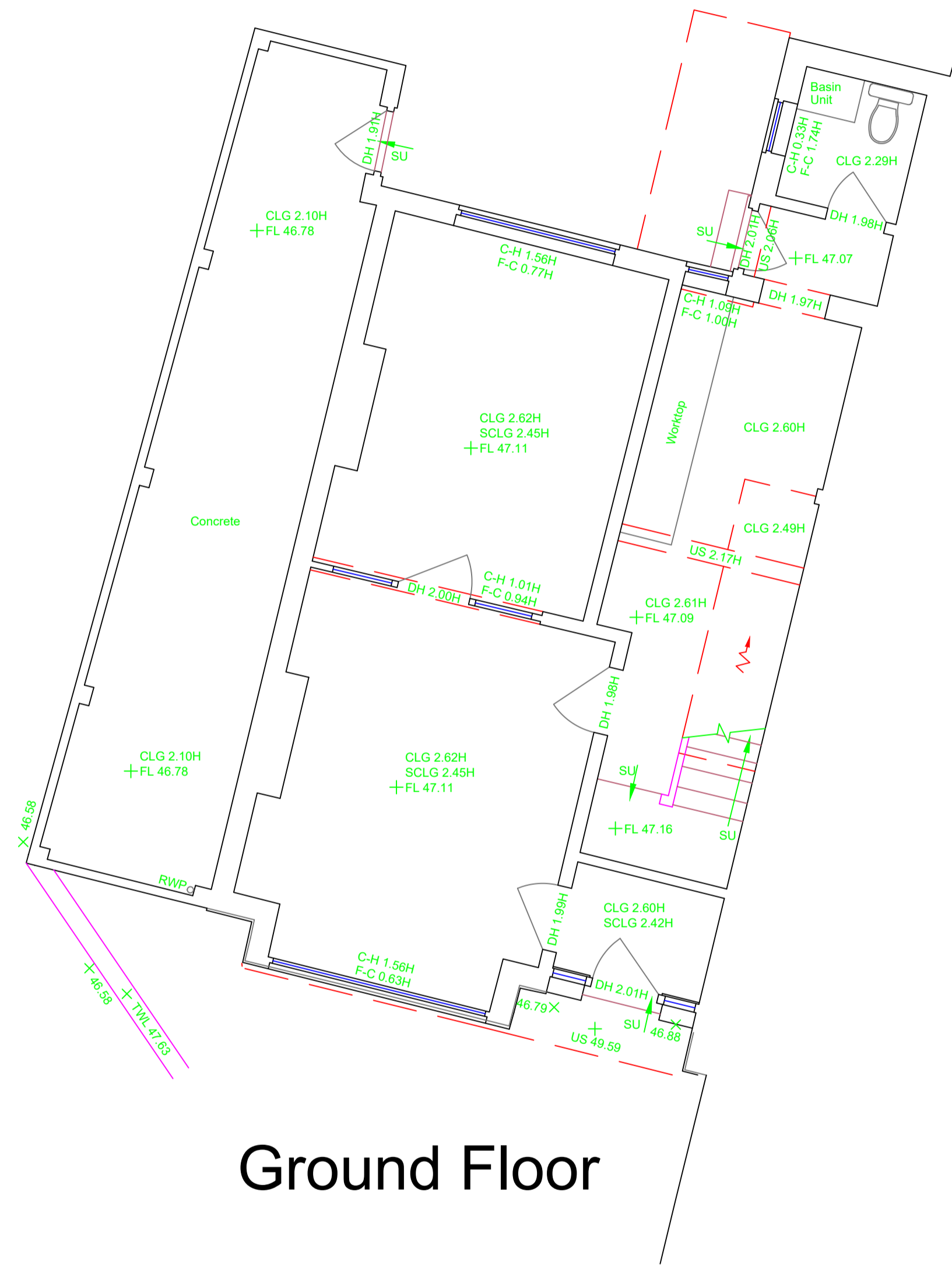
Measured Building Survey Legend

- ACL Arch Center Level / Height above floor
- ASL Arch Spring Level / Height above floor
- C-H Window Cill to Window Head Dimension
- CLG Ceiling Level / Height above floor
- DH Door Head Height above floor
- DHL Door Head Level
- F-C Floor to Window Cill Dimension
- FL Floor Level
- RU Ramp Up
- SCLG Suspended / False Ceiling Level / Height above floor
- SL Slab Level
- SU Steps Up
- TH Threshold Height above floor
- TWL Top of Wall Level
- US Underside Level / Height above floor
- USB Underside of Beam level / Height to underside above floor
- USJ Underside of joint level / Height to underside above floor
- WACL Window Arch Center Level
- WASL Window Arch Spring Level
- WCL Window Cill Level
- WHL Window Head Level

- Sloping Roof
- Sloped Ceiling (Points up)
- Arched / Vaulted Ceiling
- Building Line / Wall Line
- Detail
- Overhead Detail
- Partitions
- Gauging

All building measurements are taken to existing finishes or faces which are constant and represent an average face or wall line. All levels and dimensions are quoted in metres.
All window head and window cill levels are internal measurements.
Ceiling height measurements are taken to a point which best represents the general room height.

Insertion Point
Ordnance Survey
Coordinates
546355mE
175885mN

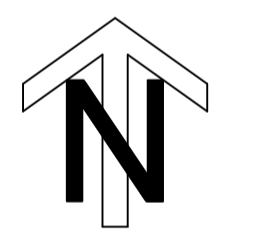
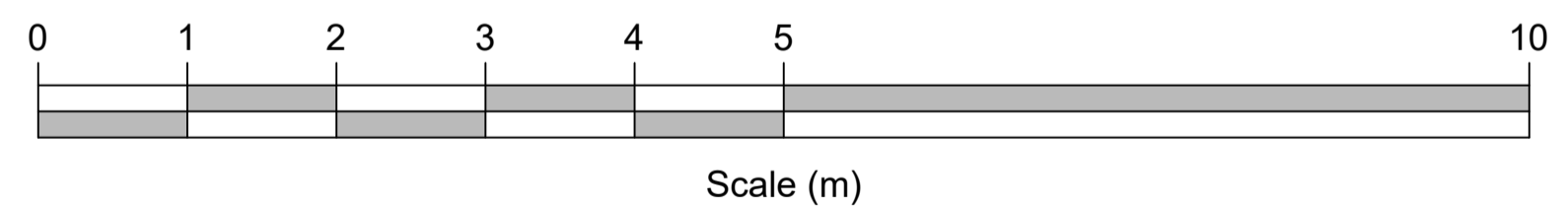


Ground Floor

Insertion Point
Ordnance Survey
Coordinates
546355mE
175885mN



First Floor



Drawing Revisions

Rev No.	Date	Details
B		
A		
Original	See below	Original survey carried out



Unit 5 Hoath Business Centre
Hoath Lane
Gillingham
Kent ME8 0BF

+44 (0)1634 751 002
www.OmegaGeo.co.uk
survey@OmegaGeo.co.uk

Client	Pullman Contracting
Project	28 Bellegrave Rd, Welling, Kent, DA16 3PY
Original Survey Date	August 2021
Job Ref	2113397
Presentation Scale	1:50 @ A1
Drawing Number	1 of 1

© Omega Geomatics Ltd
This drawing and any intellectual property within it remain the property of Omega Geomatics Ltd and should not be copied or passed to any third parties without prior consent from Omega Geomatics Ltd.