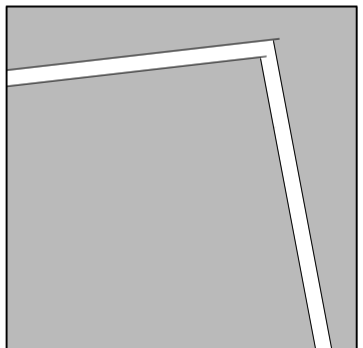

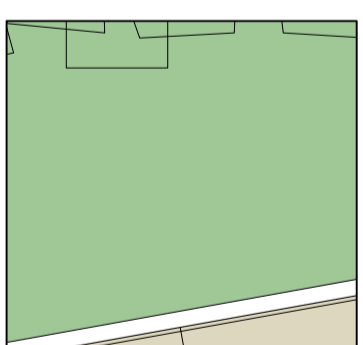
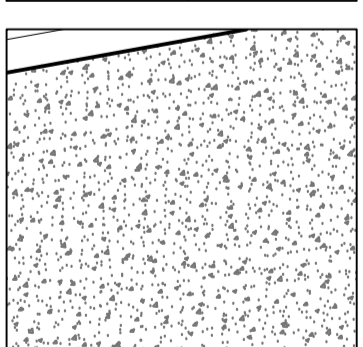
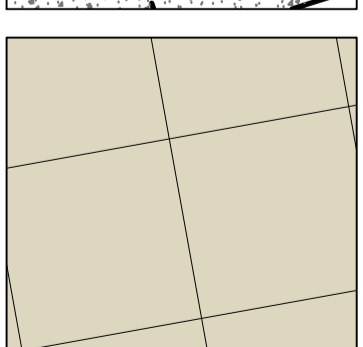


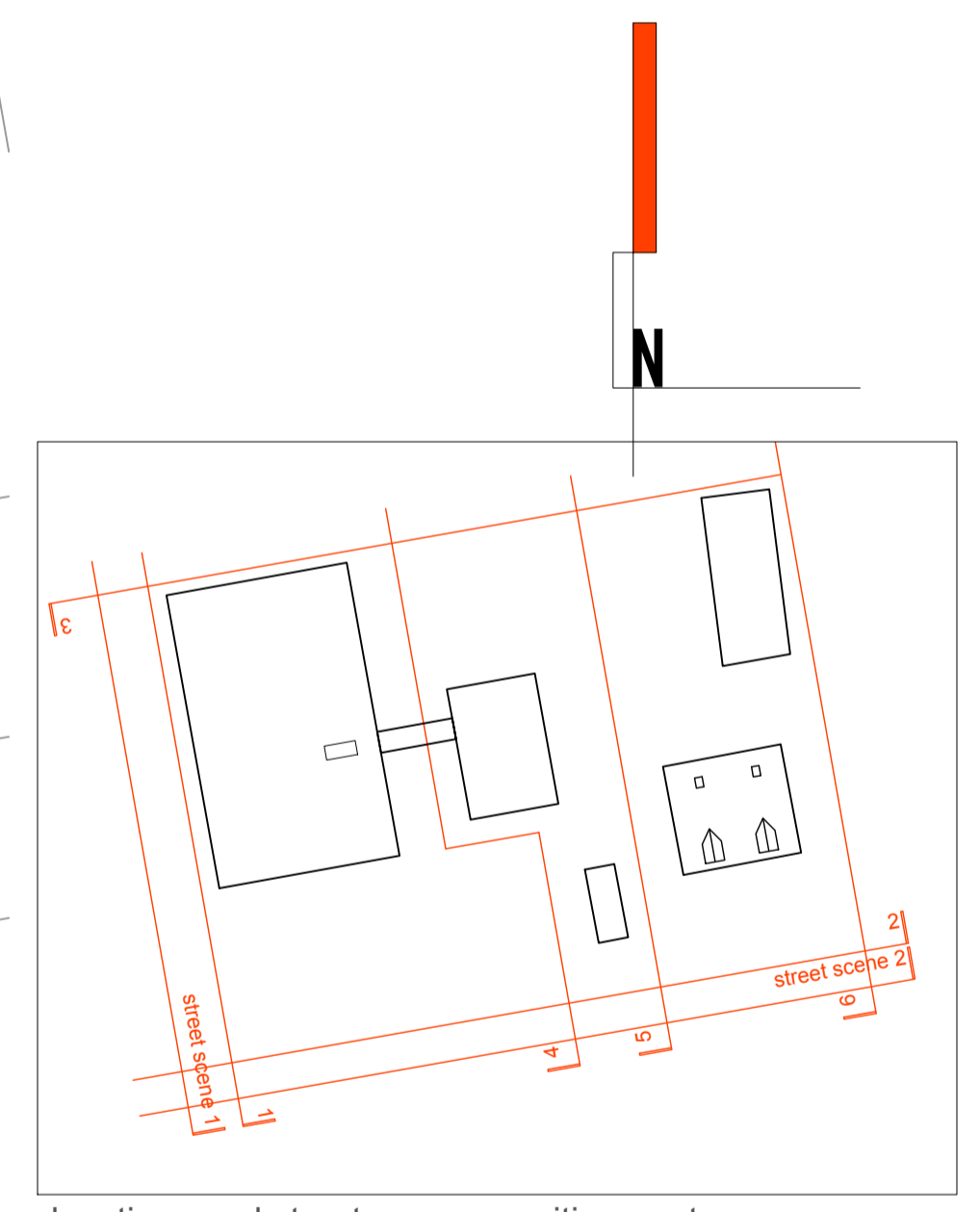


no.	accom	area m ²	sqft	floor	type
1	1b 2p	50.78	546.6	GF	apt
2	1b 2p	50.78	546.6	GF	apt
3	1b 2p	50.78	546.6	GF	apt
4	1b 2p	50.78	546.6	GF	apt
5	1b 2p	50.78	546.6	GF	apt
6	2b 3p	62.18	669.3	GF	apt
7	3b 6p	93.00	1001.1	3 fl	semi
8	3b 6p	93.00	1001.1	3 fl	semi
9	1b 2p	44.00	473.6	GF	coach hse
10	2b 4p	80.65	868.1	FF	apt
11	2b 4p	80.65	868.1	FF	apt
12	1b 2p	53.18	572.4	FF	apt
13	1b 2p	53.18	572.4	FF	apt
14	2b 3p	62.18	669.3	FF	apt
15	2b 4p	80.65	868.1	SF	apt
16	2b 4p	80.65	868.1	SF	apt
17	2b 3p	62.18	669.3	SF	apt
total		1099.40	11833.9		

Nett	area m ²	sqft
GF	360.08	3875.9
FF	329.84	3550.4
SF	223.48	2405.5
semis	186.00	2002.1
Total	1099.40	11833.9

GIA	area m ²	sqft
ground	360.09	3876.0
first	362.52	3902.2
second	258.75	2785.2
semi hse	186	2002.1
coach hse	44.00	473.6
Total	1211.36	13039.1

-  black top
100mm concrete bull nose kerb
-  Tobermore : Chieftan VS5 100mm large format blocks
100mm concrete bull nose kerbs
-  grassed areas
-  resin bonded permeable gravel : grey
-  Tobermore : standard non-slip paving flags
600 x 600 mm



Revision	Date	By	No
parking to 7&8 rotated 90° and one removed	15.03.21	nh	C
redesign of proposals to suit planning comments	10.02.20	nh	B
rear apartment single storey	07.10.19	nh	A

Nick Hutchings Architect Ltd
 Four Trees, Old North Road, North Muskham, Newark, NG23 6ET. tel: 07786322761 email: nick@nharchitect.co.uk

Connolly Land & Developments Ltd.
 The Viceroy
 Hucknall Road
 Nottingham, NG5 1FS
proposed ground floor plan
352 P 10 C
 scale - 1:100 date - Sept 19
 DRAWN : NH



ground floor plan - 1:100