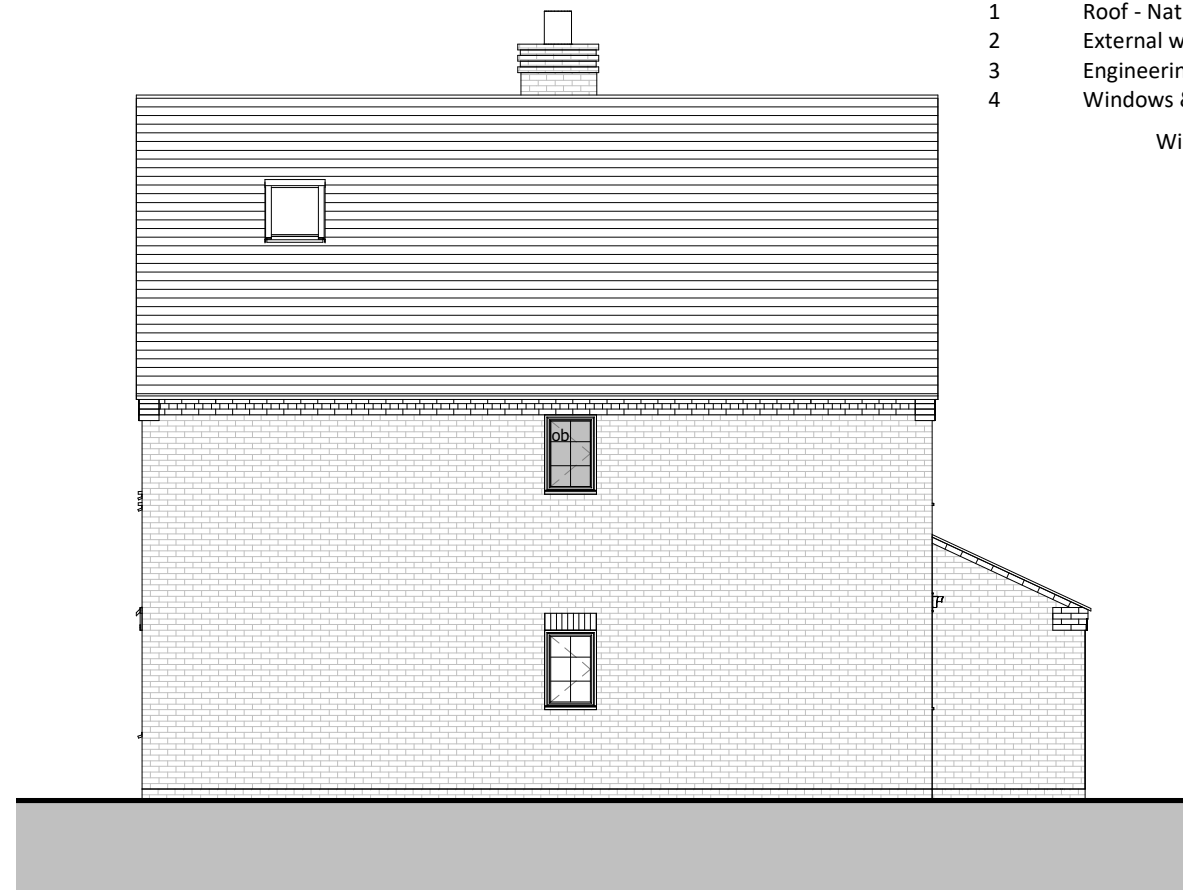




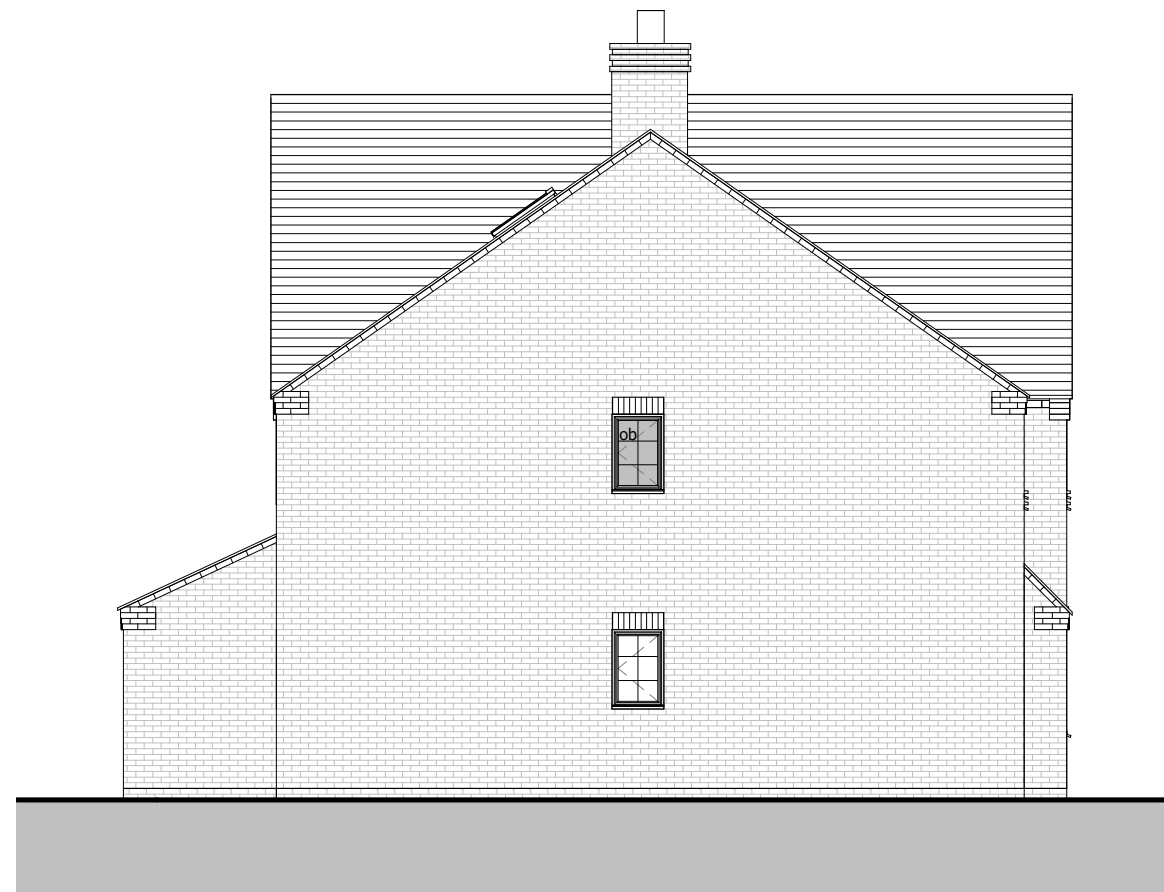
Front Elevation  
1 : 100



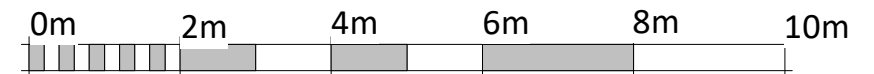
Side Elevation 1  
1 : 100



Rear Elevation  
1 : 100



Side Elevation  
1 : 100



VISUAL SCALE 1:100 @ A3

Materials Key:

- 1 Roof - Natural grey slate tiles
- 2 External walls - Orange/Red brick light
- 3 Engineering brick - Red brick
- 4 Windows & doors - Timber painted

Windows highlighted with OB to be obscured glaze

**NOTES:**  
© Copyright of this drawing remains vested with V4 Architects Ltd. Use of this drawing for all purposes is solely connected to the site it is related too. Use of the drawings for third parties must be agreed with V4 Architects Ltd. Please ensure the drawing is printed to scale by referencing the scale bar.  
For construction check and use figured dimensions only. All dimensions are to be checked on site prior to any works.  
If you have any questions on the drawings, please do not hesitate to contact us at:  
studio@v4architects.com  
01908 464 325  
V4 Architects Ltd.

REVISION;

- A 04.11.2021 ISSUED FOR PLANNING
- B 25.11.2021 Dims added
- C 01.11.2021 Ref to plots 4&5 removed

PROJECT;  
LAND OFF CHURCH STREET, HARGRAVE

CLIENT;  
BASTION GROUP

DRAWING SHEET;  
PALOMINO (a)  
ELEVATIONS

DRAWING NUMBER & REVISION;  
V41000-011C

DATE  
NOV 2021

SCALE  
1 : 100@A3

Status  
PLANNING

PLOTS:  
2 & 3



ARCHITECTS  
Registered Office: The Pinnacle,  
150 Midsummer Boulevard,  
Milton Keynes, MK9 1FD.  
Registered in England: No. 13175963  
V4 Architects Ltd