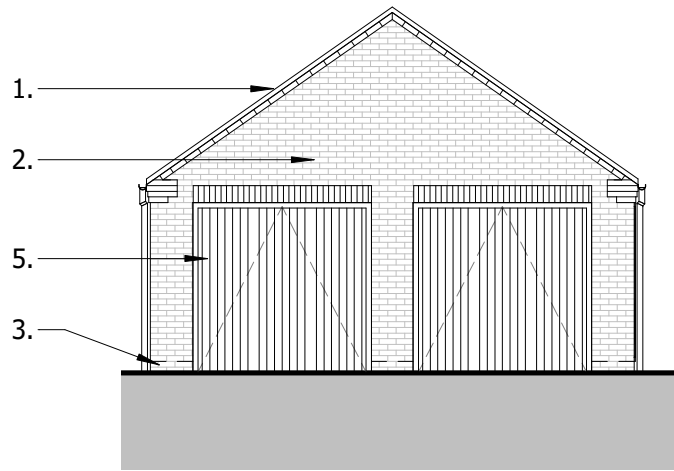


**Materials Key:**

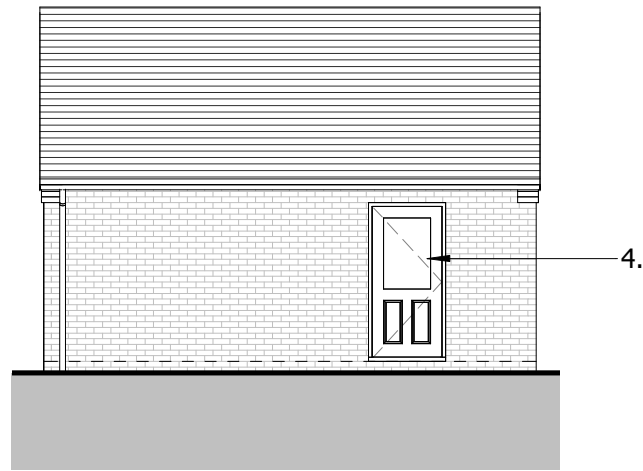
- 1 Roof - Slate or Plain tiles
- 2 External walls - Orange/Red brick light
- 3 Engineering brick - Red brick
- 4 Personnel doors - uPVC
- 5 Main door - Metal painted black

**NOTES:**  
 © Copyright of this drawing remains vested with V4 Architects Ltd. Use of this drawing for all purposes is solely connected to the site it is related too. Use of the drawings for third parties must be agreed with V4 Architects Ltd. Please ensure the drawing is printed to scale by referencing the scale bar.  
 For construction check and use figured dimensions only. All dimensions are to be checked on site prior to any works.  
 If you have any questions on the drawings, please do not hesitate to contact us at:  
 studio@v4architects.com  
 01908 464 325  
 V4 Architects Ltd.

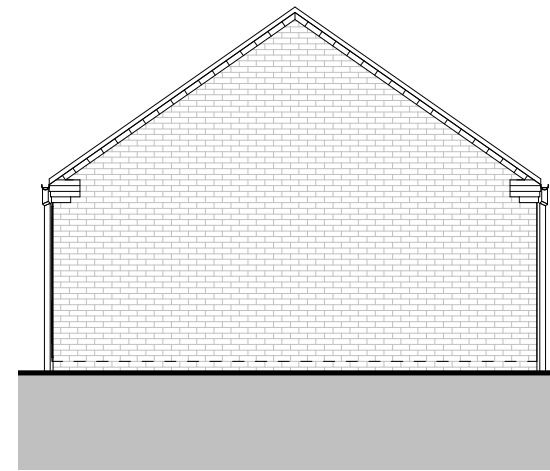
**REVISION;**  
 A 04.11.2021 ISSUED FOR PLANNING



**Front Elevation**  
1 : 100



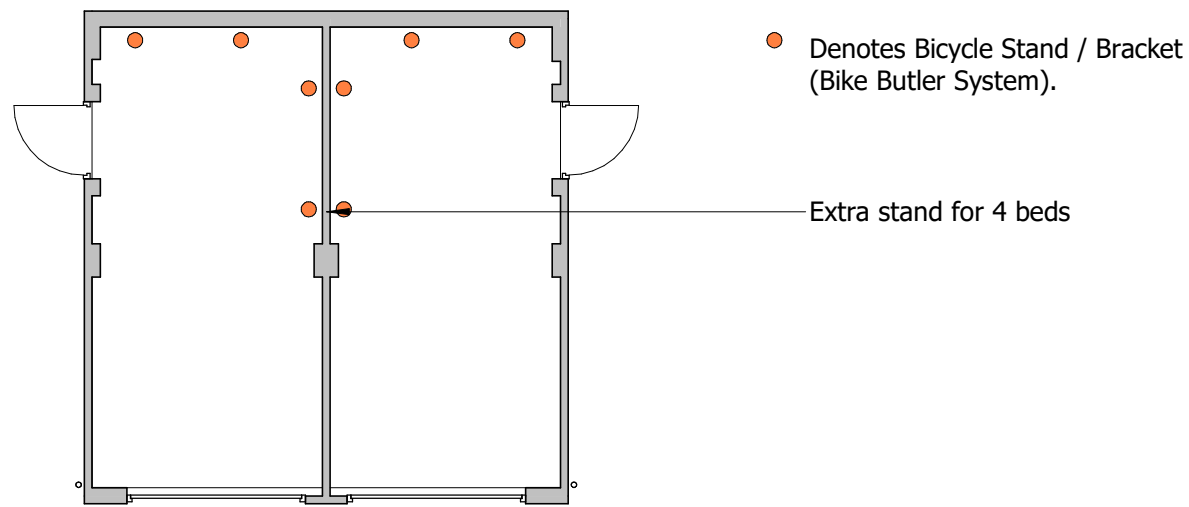
**Side Elevation**  
1 : 100



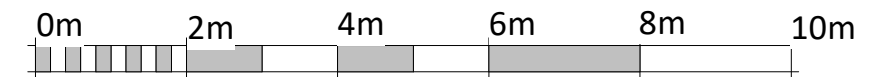
**Rear Elevation**  
1 : 100



**Side Elevation 2**  
1 : 100



**Double Garage Floor Plan**  
1 : 100



**VISUAL SCALE 1:100 @ A3**

**PROJECT;**  
 LAND OFF CHURCH STREET, HARGRAVE

**CLIENT;**  
 BASTION GROUP

**DRAWING SHEET;**  
 GARAGES

**DRAWING NUMBER & REVISION;**  
 V41000-015A

**DATE**  
 OCT 2021

**SCALE**  
 1 : 100@A3

**Status**  
 PLANNING



**Registered Office:** The Pinnacle,  
 150 Midsummer Boulevard,  
 Milton Keynes, MK9 1FD.  
 Registered in England: No. 13175963  
 V4 Architects Ltd