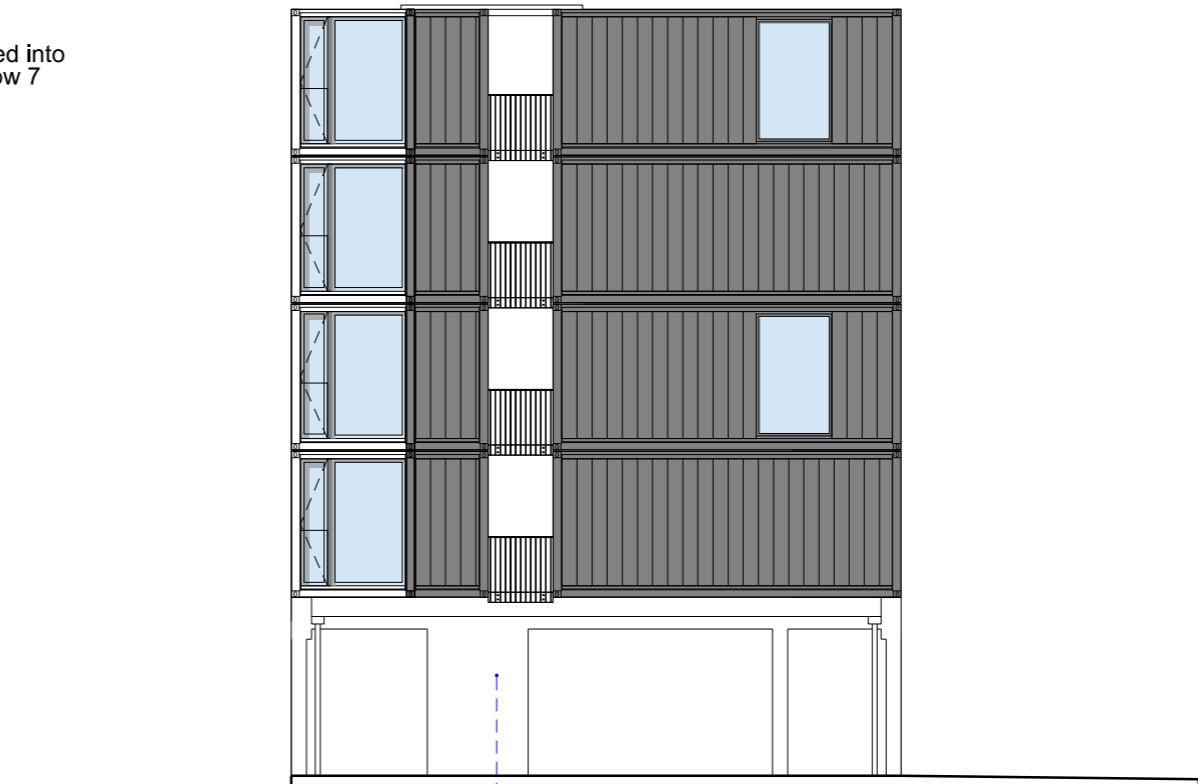


NOTES:



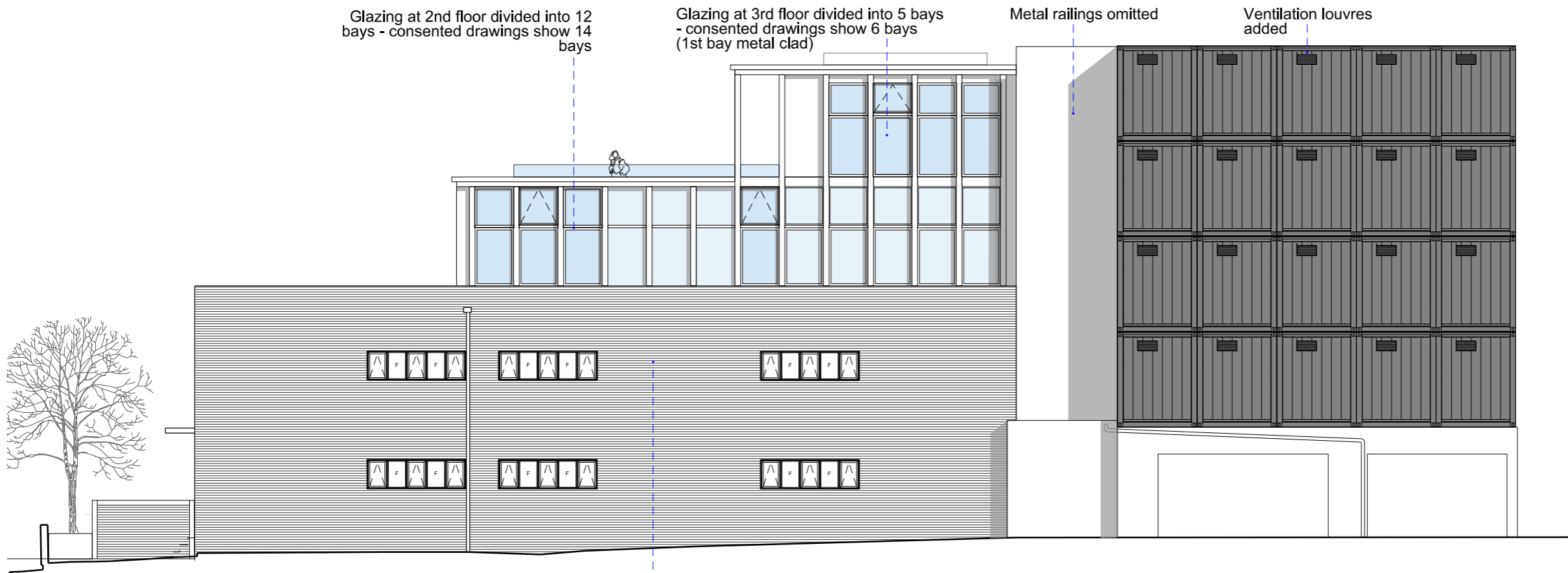
SOUTH ELEVATION

Glazing at 2nd & 3rd floors divided into 8 bays - consented drawings show 7 bays



NORTH ELEVATION

Support structure adjusted



EAST ELEVATION

Glazing at 2nd floor divided into 12 bays - consented drawings show 14 bays

Glazing at 3rd floor divided into 5 bays - consented drawings show 6 bays (1st bay metal clad)

Metal railings omitted

Ventilation louvres added

Windows omitted

0 2 4 6 10 20

Rev	Date	Description

status

G M L Architects

Unit 3, 1-4 Christina Street Tel 020 7729 9595
 London EC2A 4PA Fax 020 7729 1801
 info@gmlarchitects.co.uk

34-36 HENRY ROAD
 BARNET

DECEMBER 2021

1:150 @A3

PROPOSED ELEVATIONS

4903/NMA/02