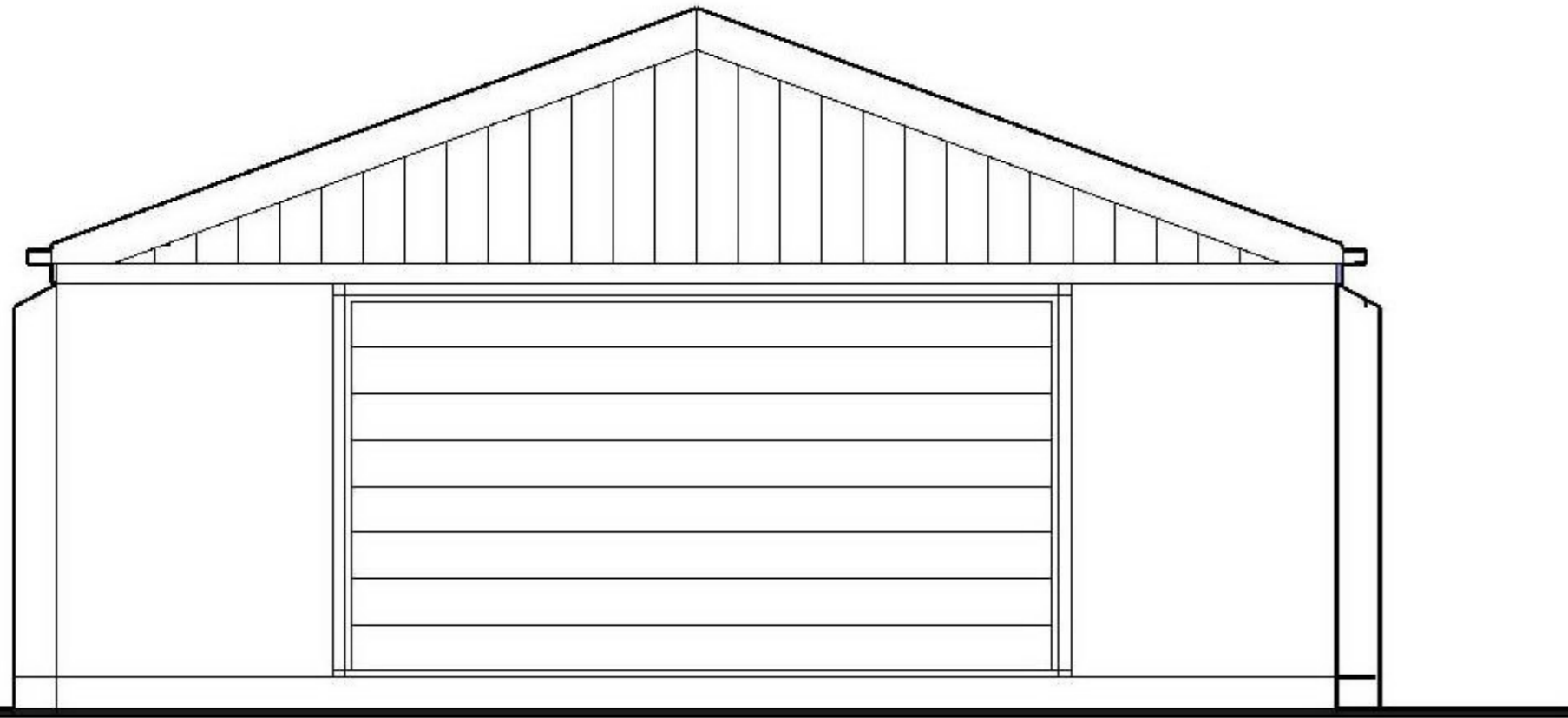
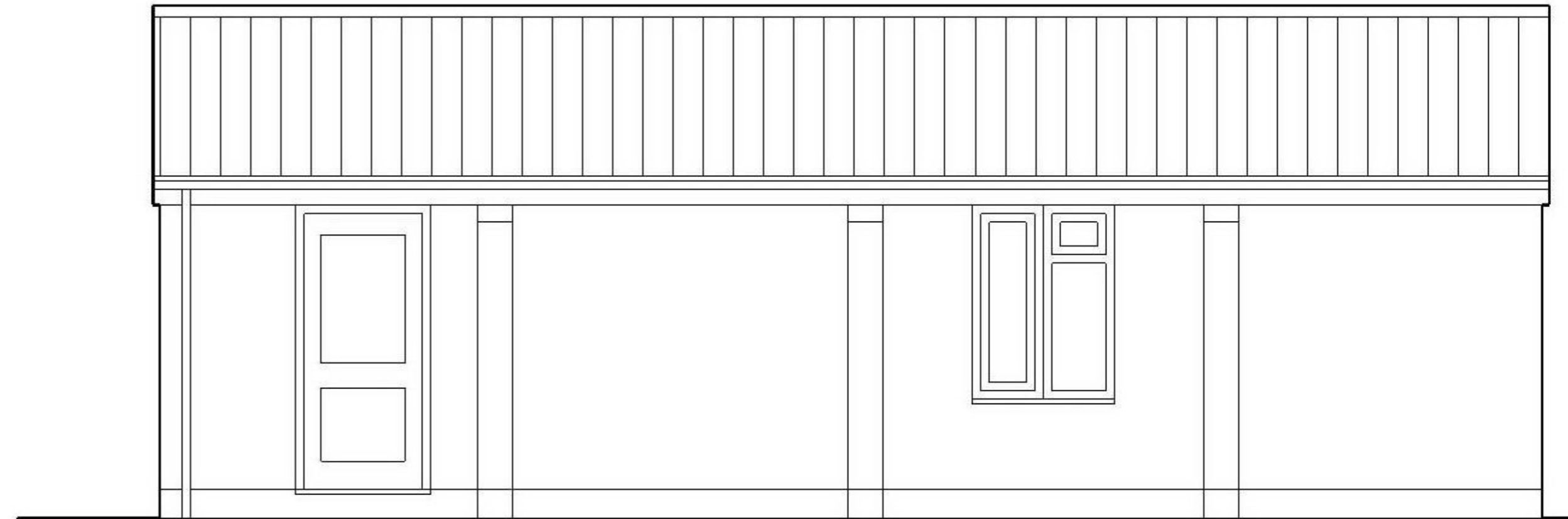


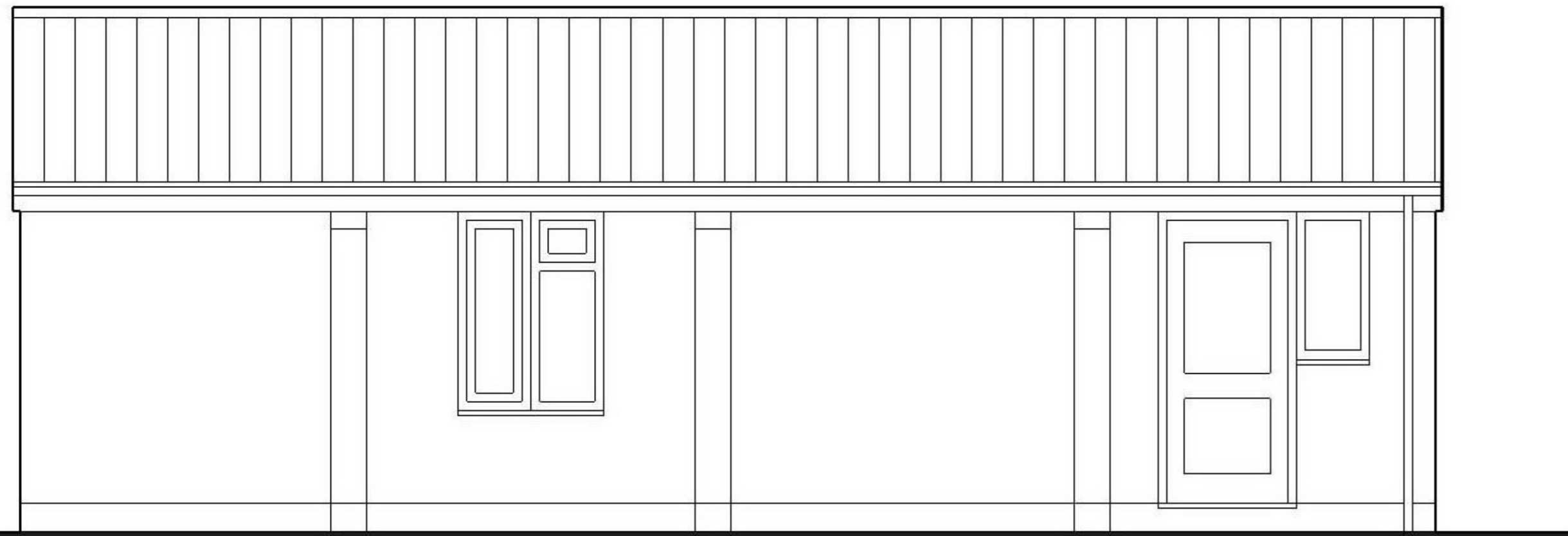
WEST FACING



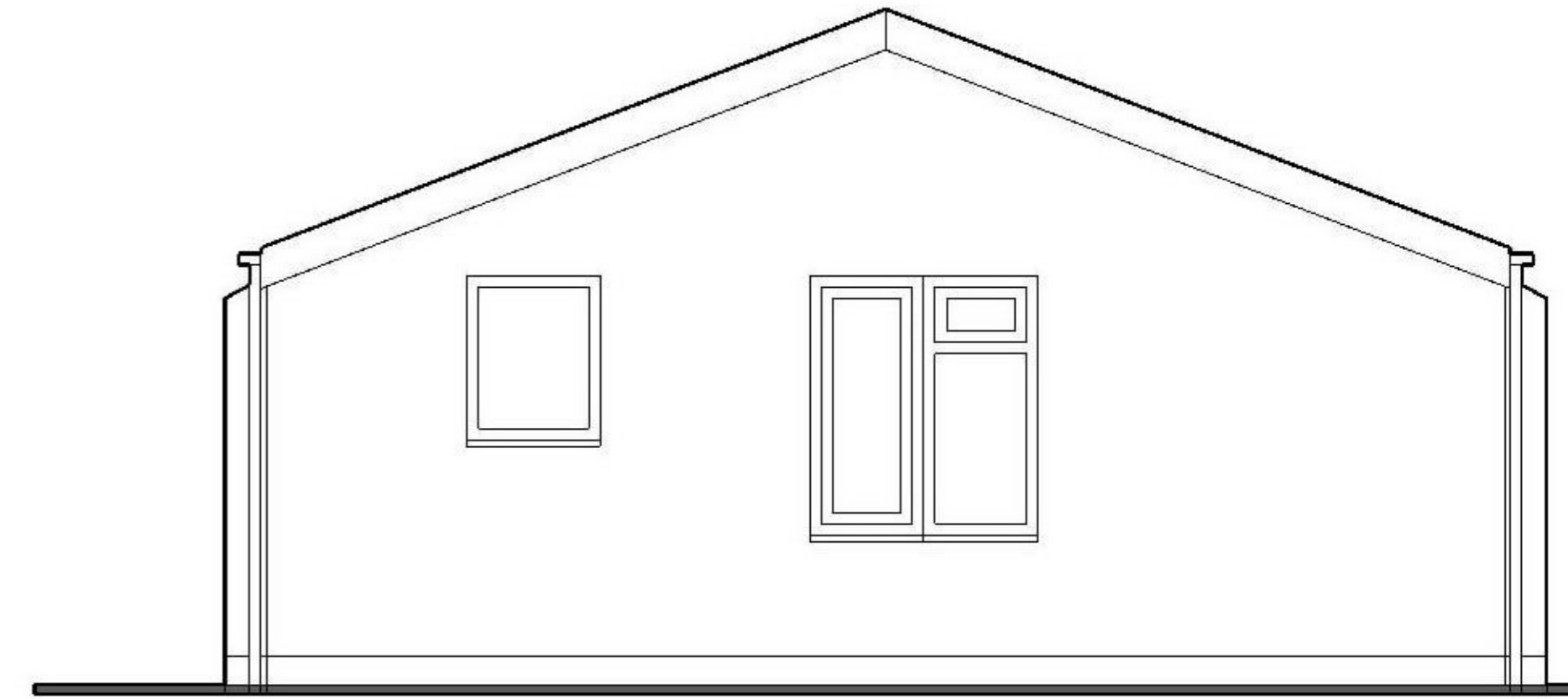
NORTH FACING



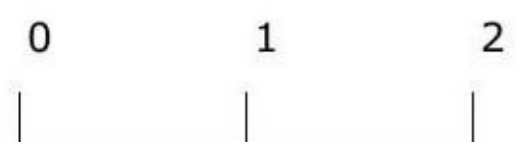
SOUTH FACING



EAST FACING



ROOF COVERINGS - NATURAL SLATE COLOUR GREY WITH CONCRETE RIDGE TILES COLOUR GREY  
 WALLS - BLOCKWORK WITH RENDER COVERING WITH PAINT FINISH EXCEPT WHERE CLADDED WITH NATURAL SLATE COLOUR GREY TO GABLE OF WESTFACING ELEVATION  
 AND WHERE CLADDED WITH NATURAL SLATE COLOUR GREY BETWEEN PATIO DOORS TO WEST FACING ELEVATION  
 WINDOWS - UPVC COLOUR WHITE CLEAR DOUBLE GLAZED  
 DOORS - UPVC COLOUR WHITE CLEAR DOUBLE GLAZED  
 RWG - UPVC COLOUR WHITE



Existing Elevations  
 Scale 1:50 @ A3