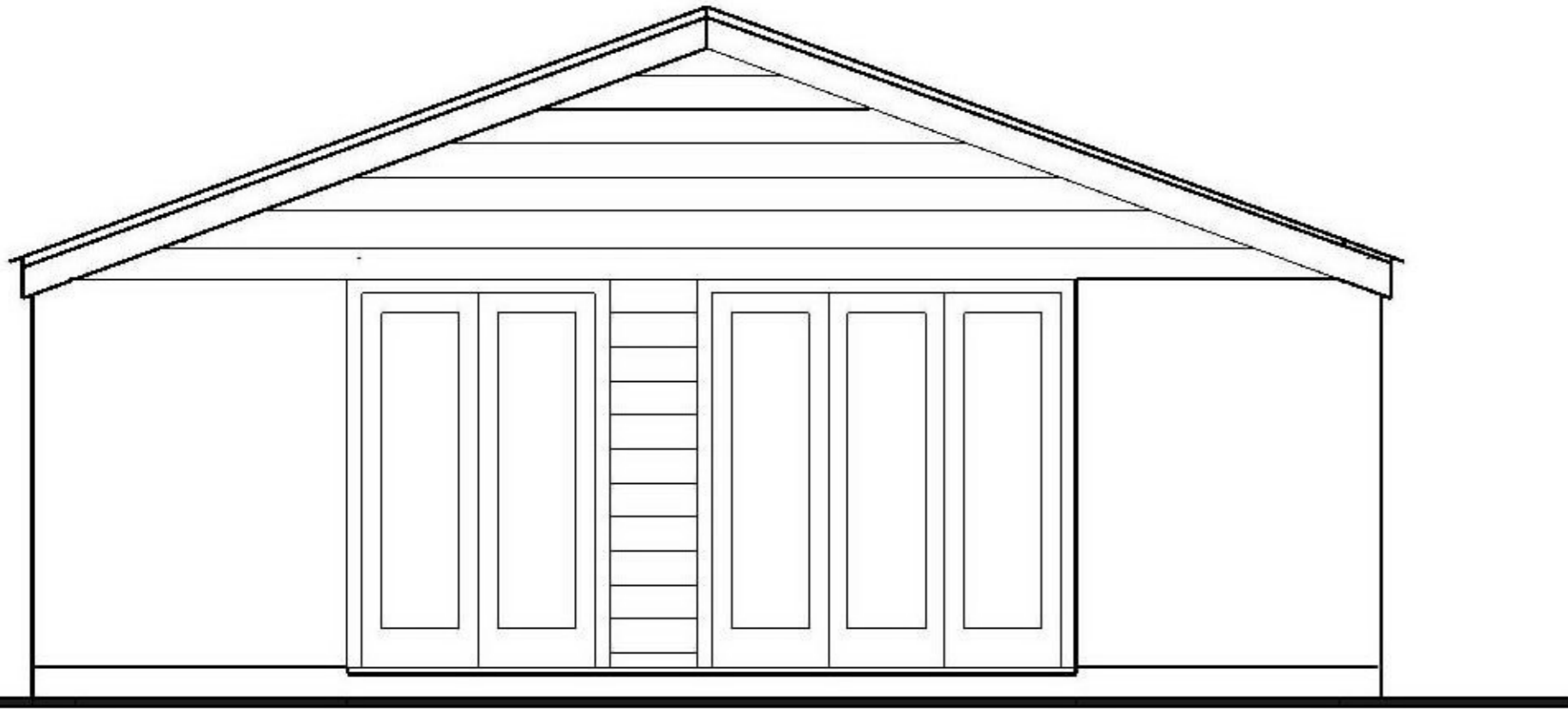
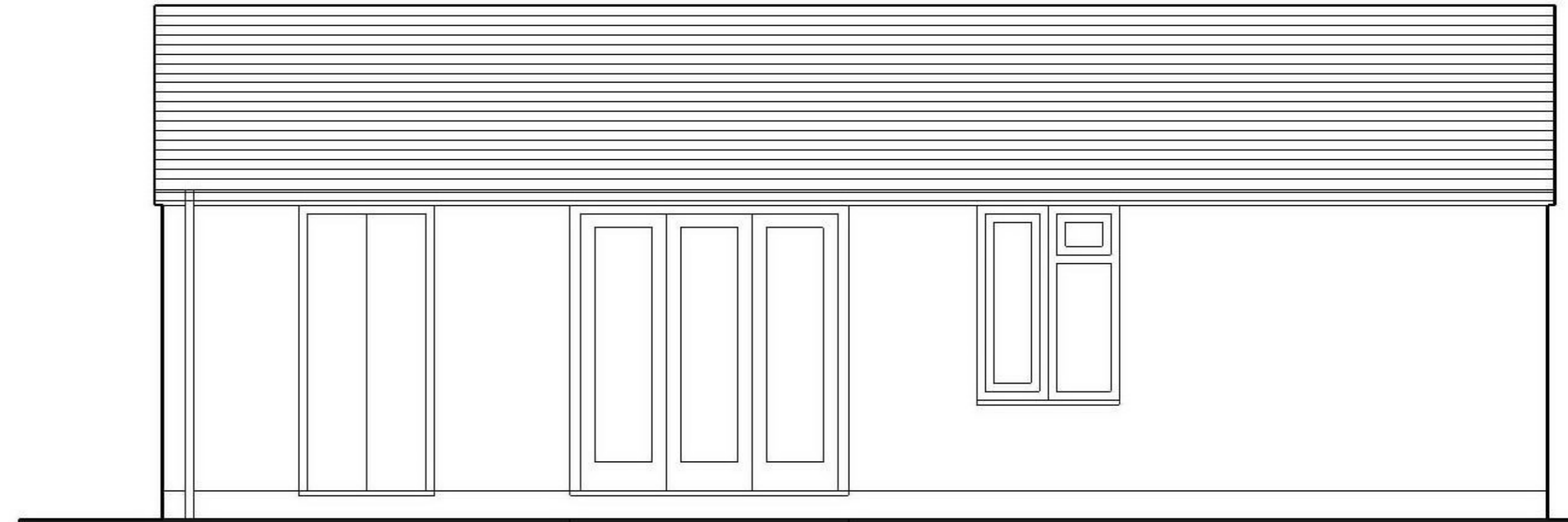


WEST FACING



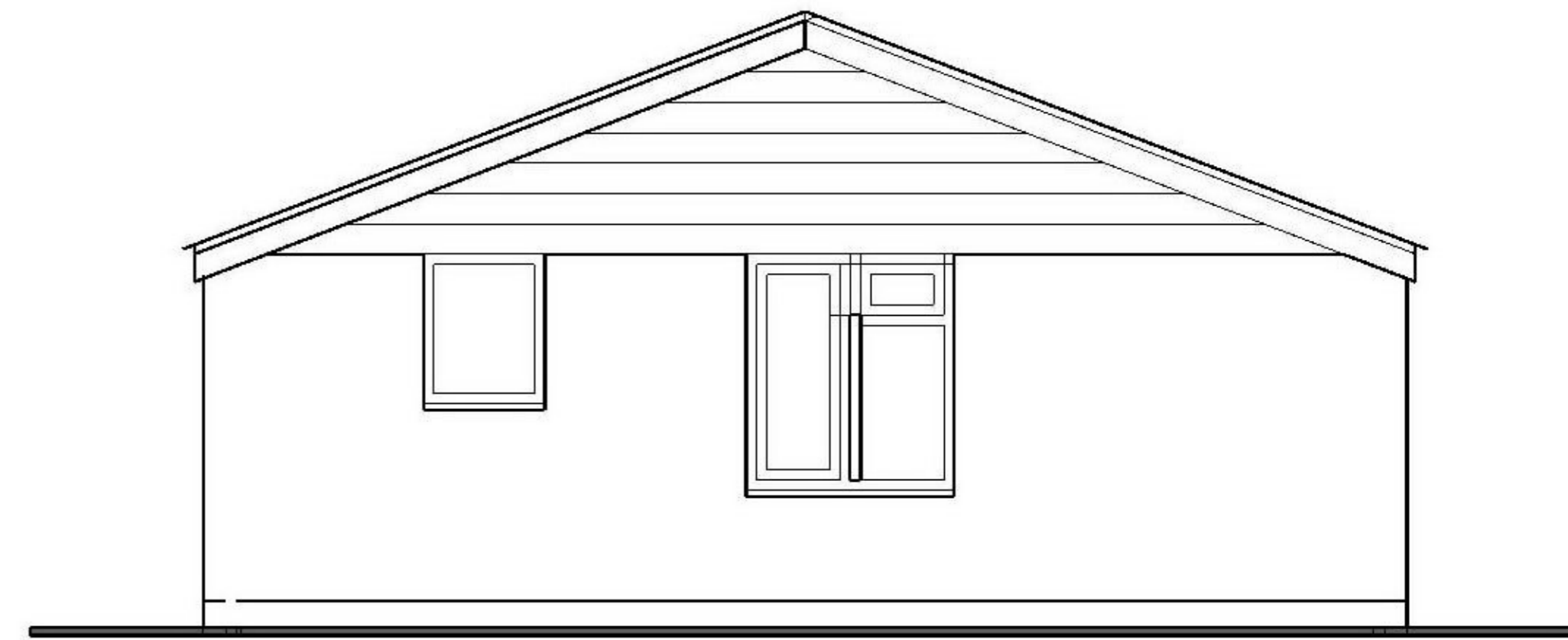
NORTH FACING



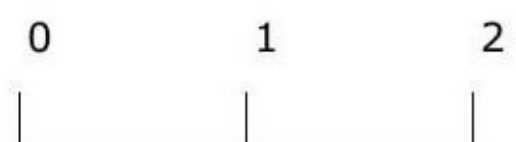
SOUTH FACING



EAST FACING



ROOF COVERINGS - NATURAL SLATE COLOUR GREY WITH CONCRETE RIDGE TILES COLOUR GREY  
WALLS - BLOCKWORK WITH RENDER COVERING WITH PAINT FINISH EXCEPT WHERE CLADDLED WITH NATURAL SLATE COLOUR GREY TO GABLE OF WESTFACING ELEVATION  
AND WHERE CLADDLED WITH NATURAL SLATE COLOUR GREY BETWEEN PATIO DOORS TO WEST FACING ELEVATION  
WINDOWS - UPVC COLOUR WHITE CLEAR DOUBLE GLAZED  
DOORS - UPVC COLOUR WHITE CLEAR DOUBLE GLAZED  
RWG - UPVC COLOUR WHITE



Proposed Elevations  
Scale 1:50 @ A3