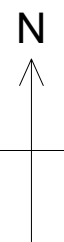


Holy Trinity  
School

TRINITY COL

- GENERAL NOTES :-**
1. Do not scale from this drawing, unless for planning purposes.
  2. All dimensions are in millimetres (mm), all levels in metres (m) unless noted otherwise.
  3. Discrepancies or omissions are to be reported to the Designer prior to work commencing.
  4. Materials and workmanship are to comply in all respects with current British Standard Specifications, Codes of Practice, and Building Regulations Approved Documents.
  5. The copyright of this drawing is vested in the Designer and must not be copied or reproduced without written consent.
  6. The Contractor is to check and verify all building and site dimensions, levels and sewer invert levels at connection points before work commences.
  7. This drawing is to be read in conjunction with all relevant specifications and drawings issued by the Engineer, Designer and other Specialists.
  8. It is assumed that all works on this drawing will be carried out by a competent contractor working, where appropriate, to an approved method statement.



REV.	DESCRIPTION	DATE
-	INITIAL ISSUE	--/--

CLIENT :-  
HOLY TRINITY SCHOOL

PROJECT :-  
MULTI USE GAMES AREA

TITLE :-  
BLOCK PLAN

**PR Associates**  
Building Surveyors & Consultants

The Bank, Knighton-on-Teme, Worcestershire  
WR15 8LY  
Telephone: 0800 9788 141  
Fax: 01584 781249  
Website: www.prassociates.org

PLANNING	
JOB NUMBER:- 1979	DATE:- NOV 21
SCALE:- 1:500 @ A3	DRAWN:- MN
DRAWING No:- GA03	CHECKED:- RP
	STATUS REV
	F -

PROJECT STATUS KEY: P = PRELIMINARY, T = TENDER, C = CONSTRUCTION

