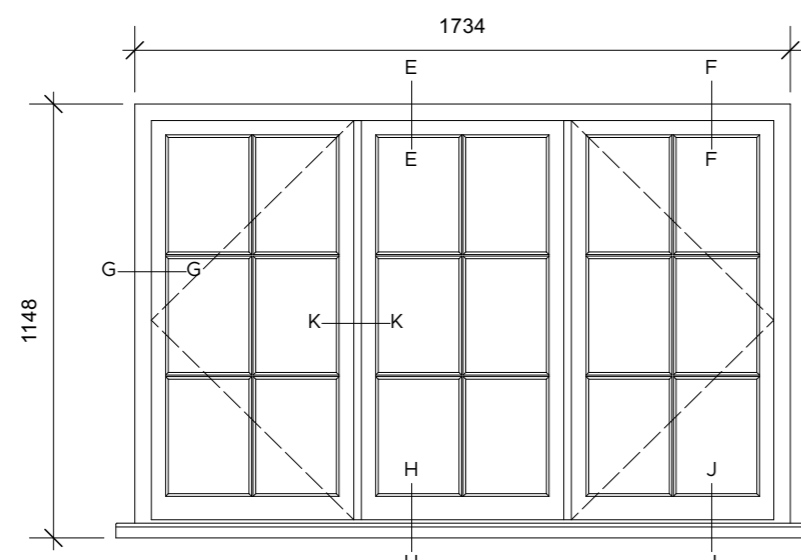
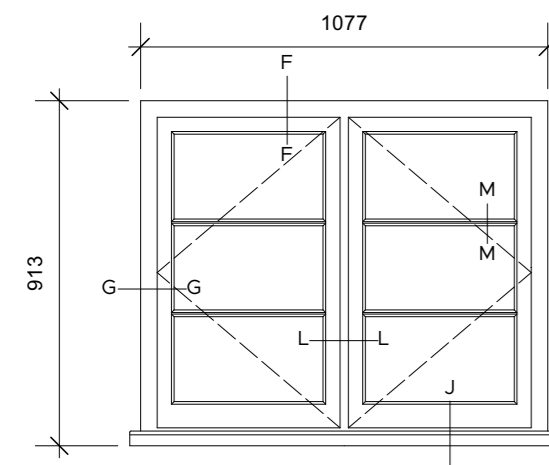


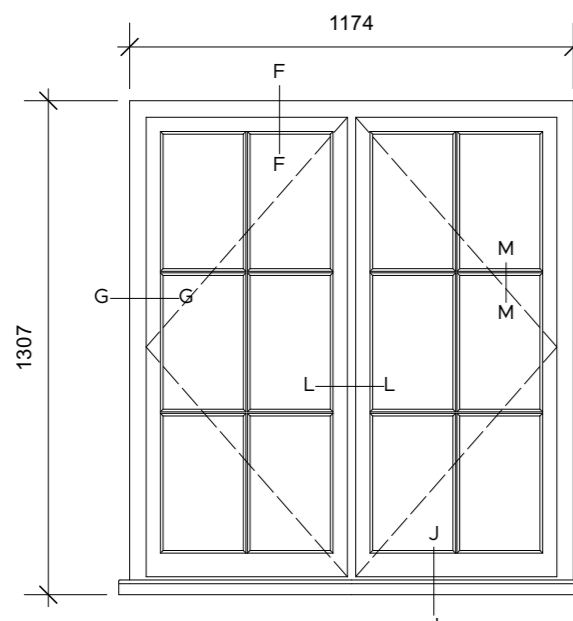
WG01



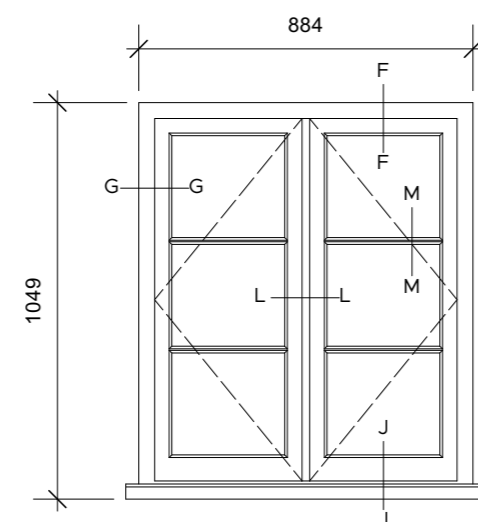
WG02



WFO1  
WFO2



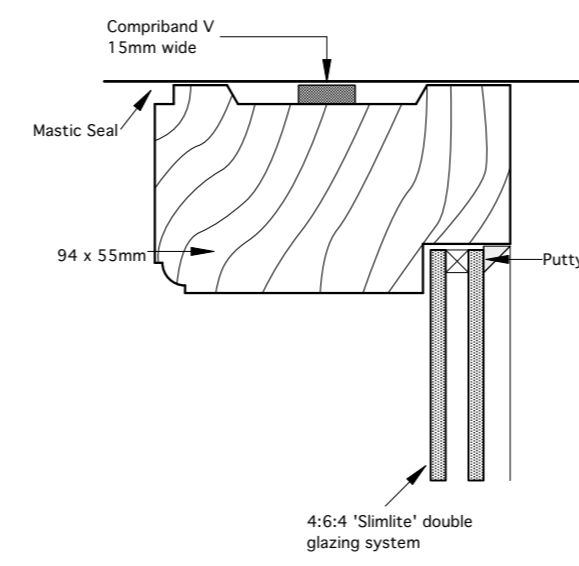
WFO3



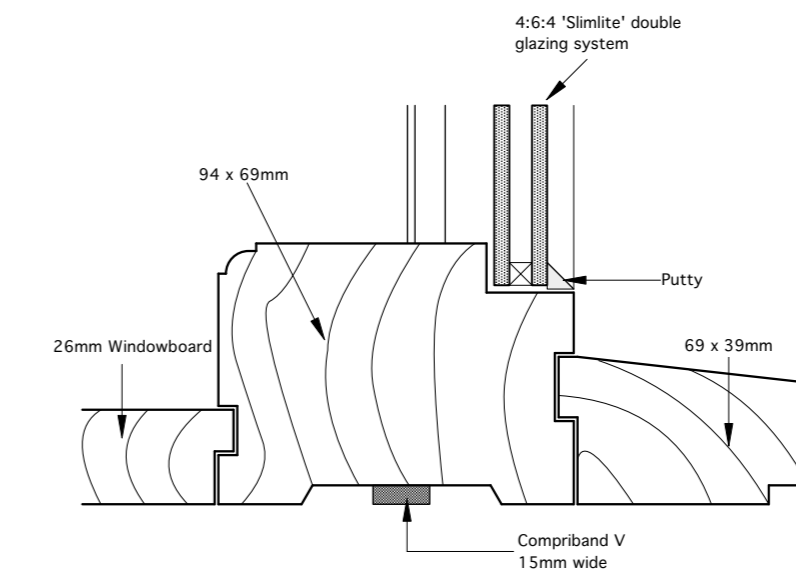
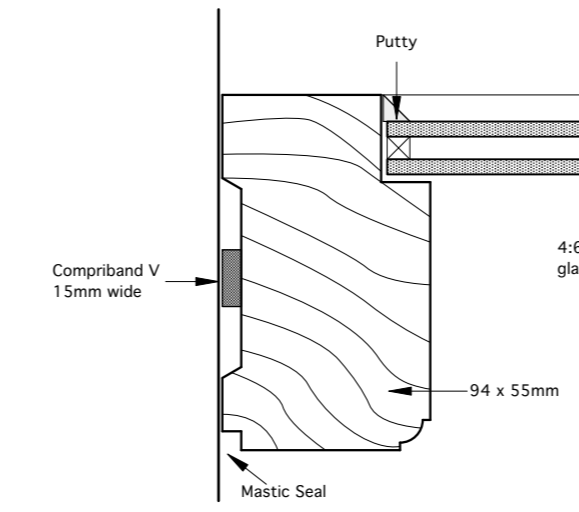
WFO4  
WFO5

PROPOSED WINDOWS - ELEVATIONS  
Scale 1:20

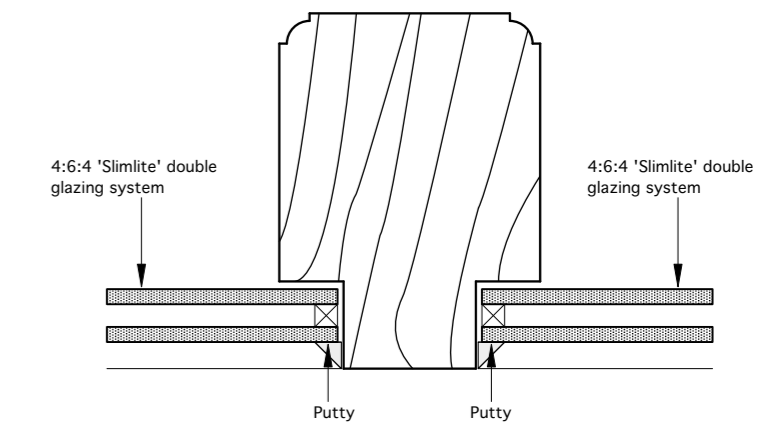
A-A Fixed Head



B-B Jamb

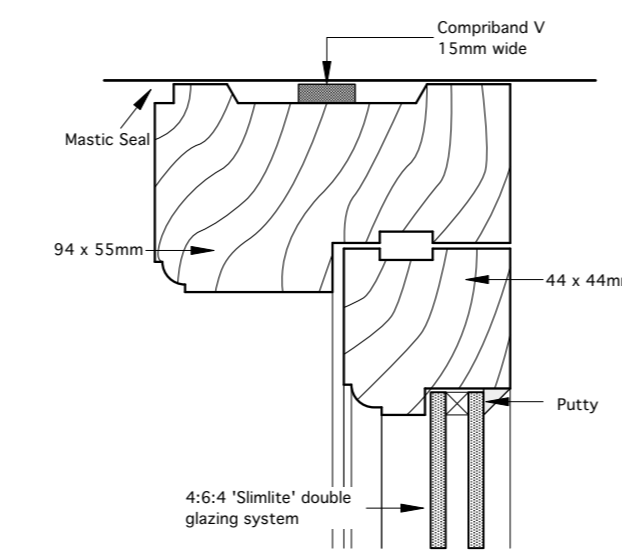


C-C Fixed Cill

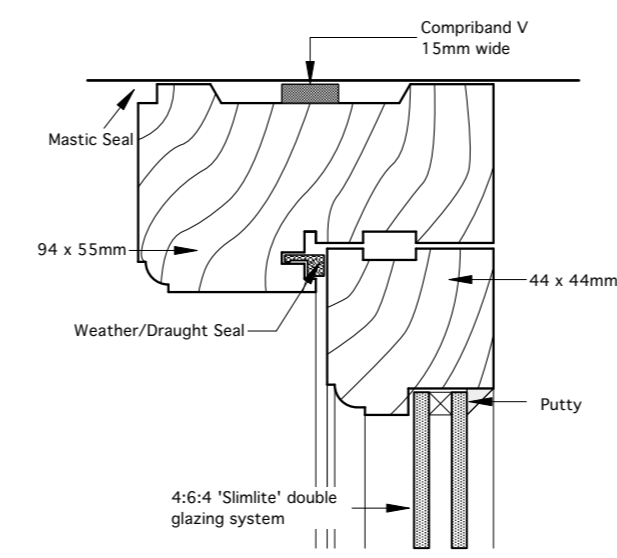


D-D Window Mullion

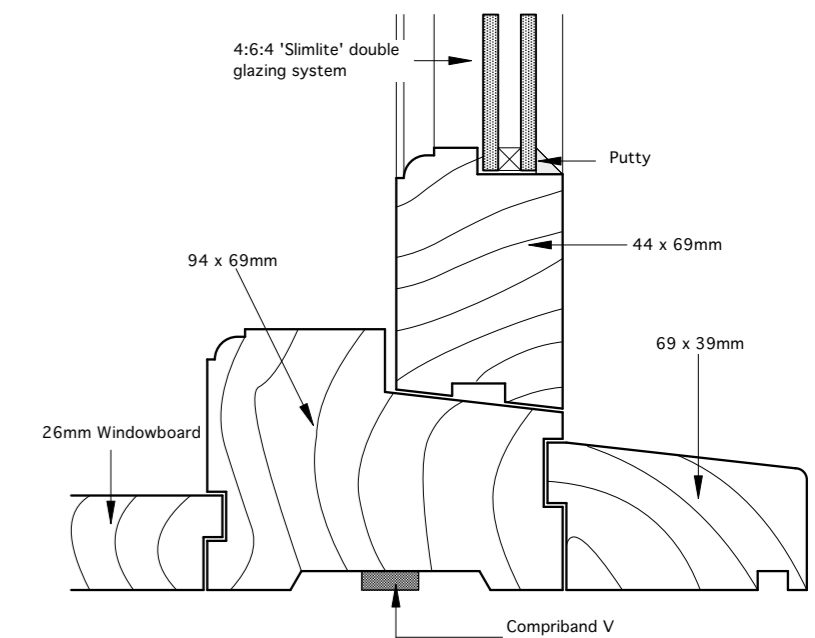
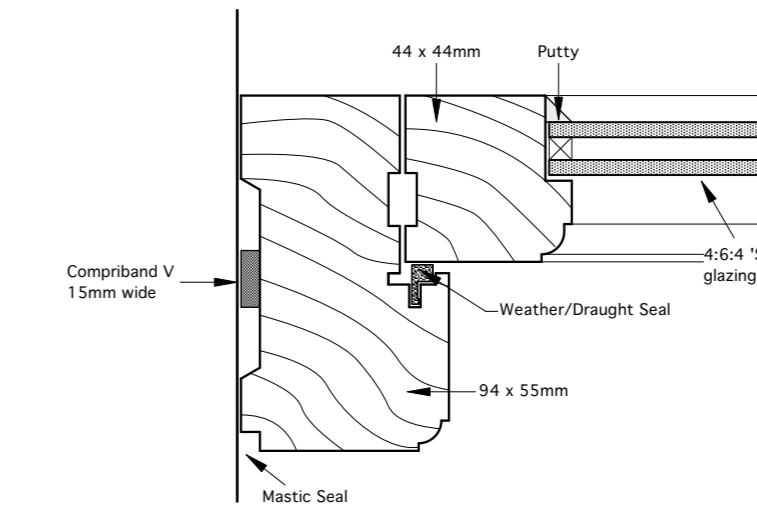
E-E Fixed Head



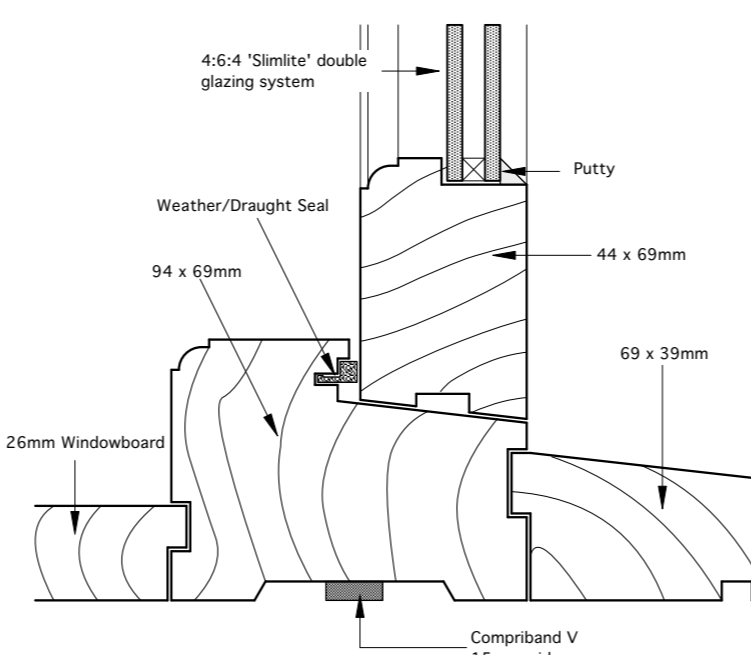
F-F Head - Opening Light



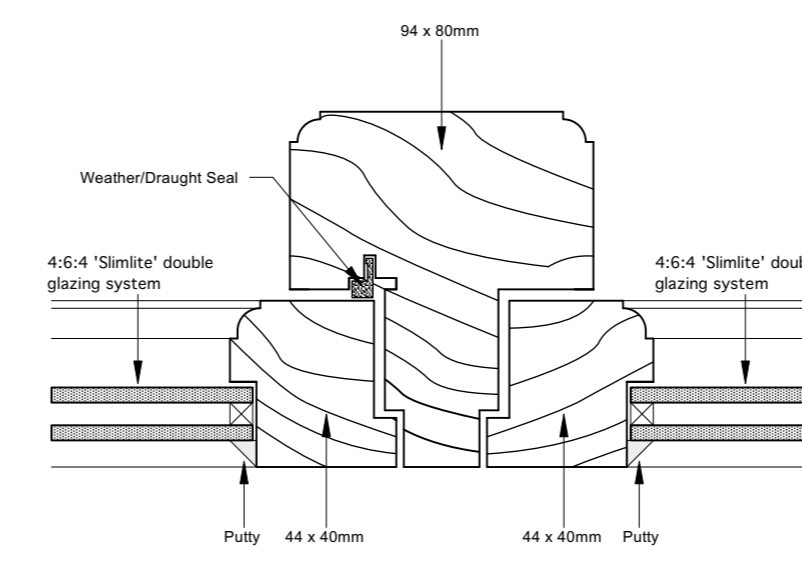
G-G Jamb



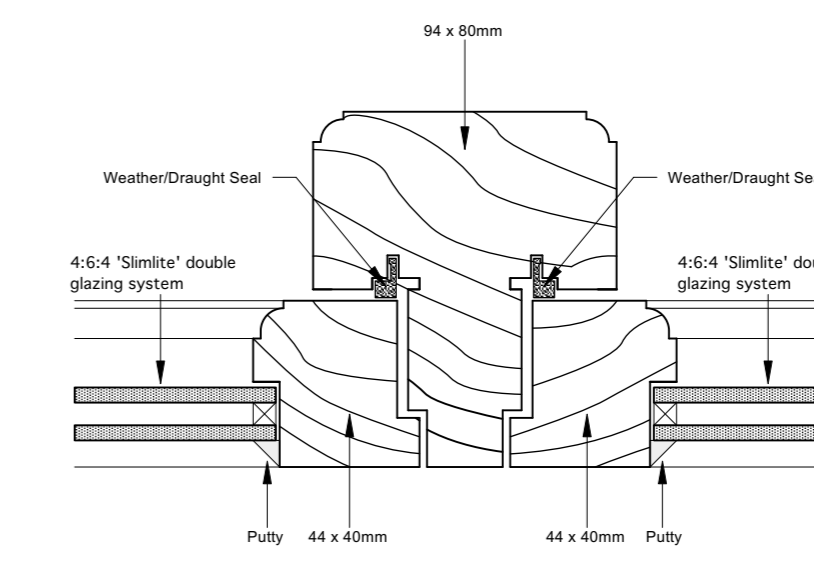
H-H Fixed Cill



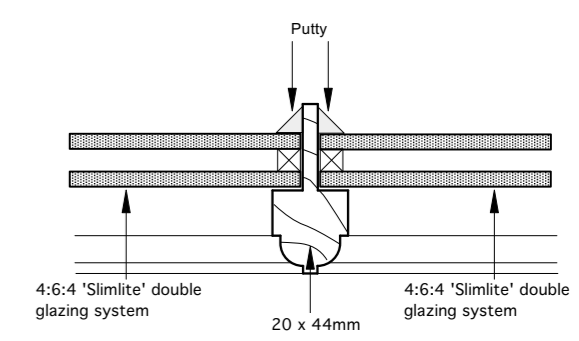
J-J Cill - Opening Light



K-K Window Mullion

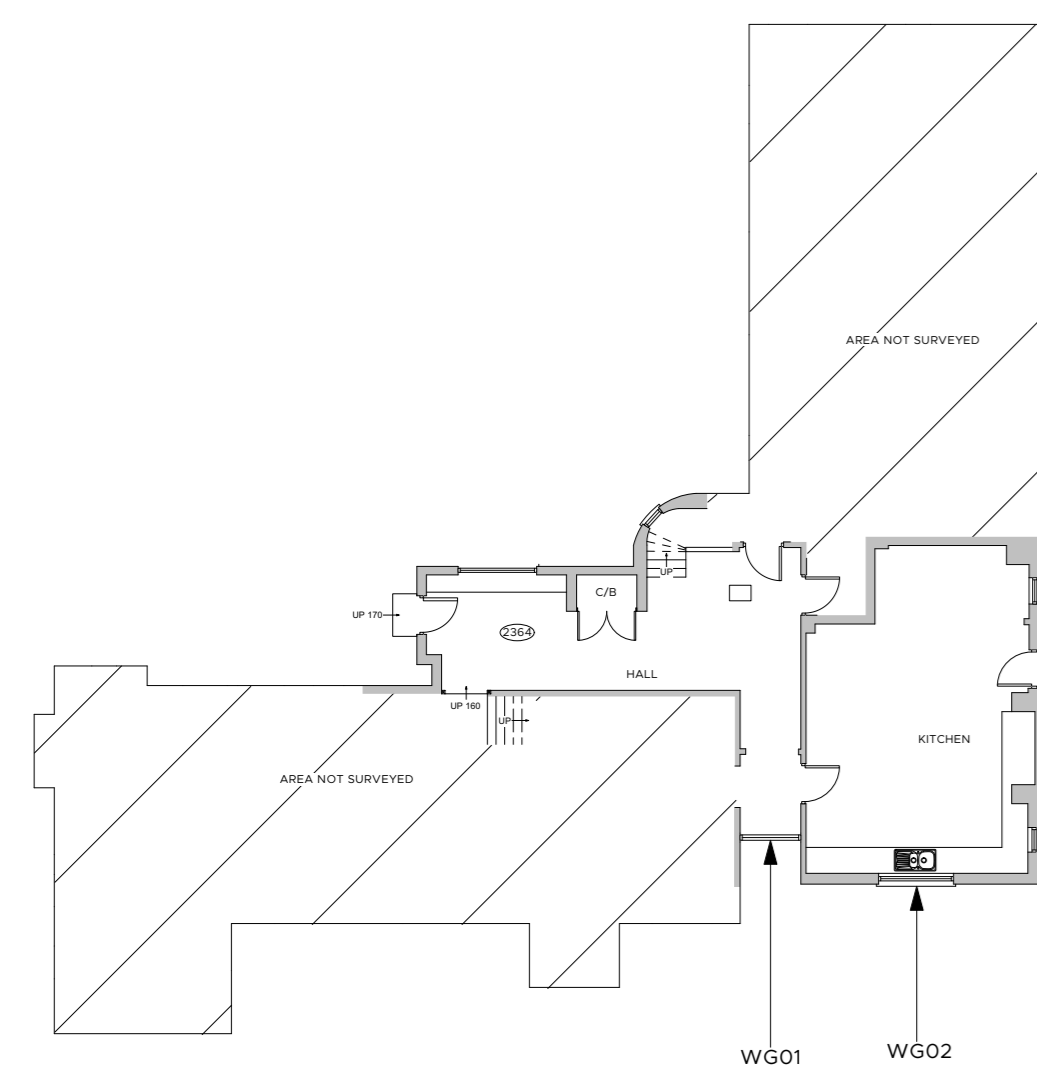


L-L Window Mullion

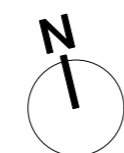
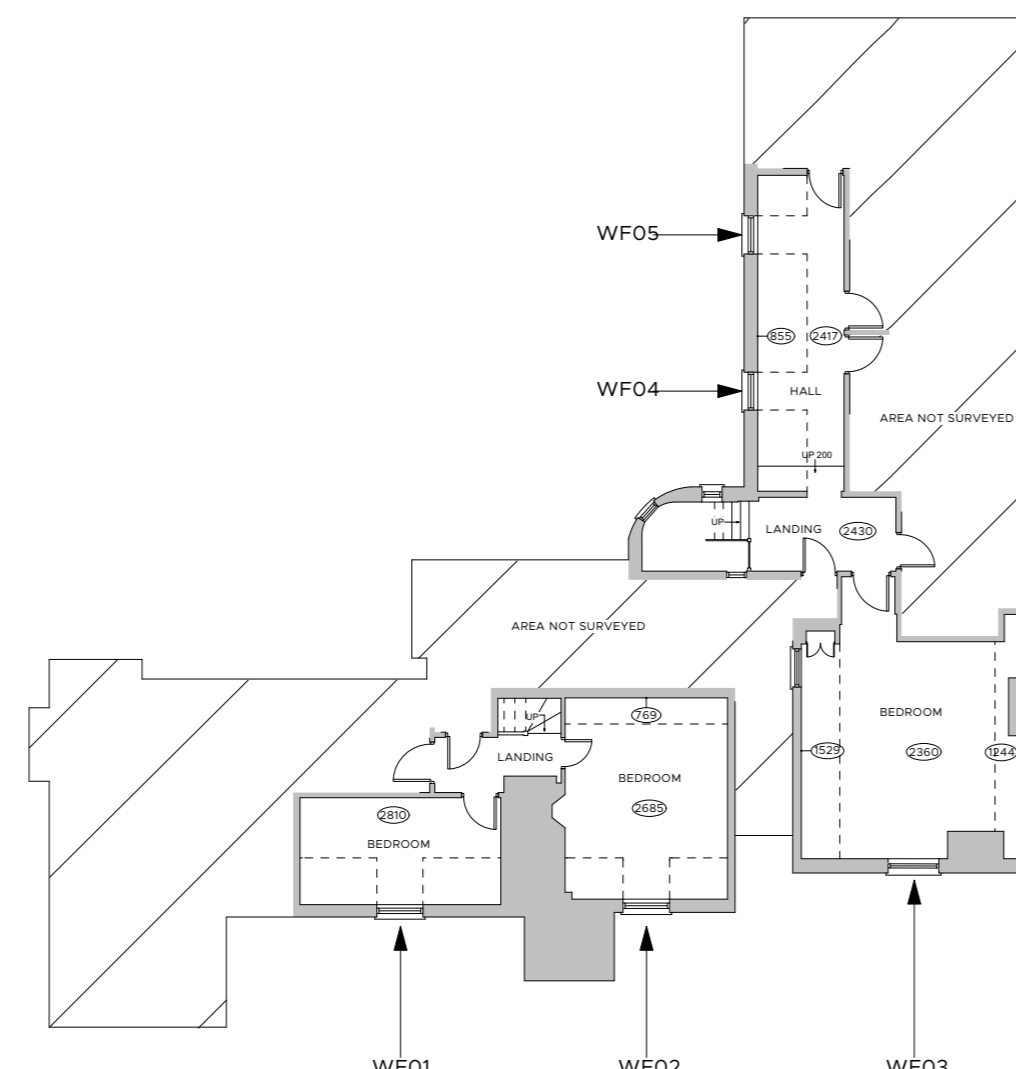


M-M Glazing Bead

PROPOSED WINDOW DETAILS  
Scale 1:2



FLOOR PLANS  
Not To Scale



NOTES:

- SIZE OF OPENING TO BE CHECKED ON SITE PRIOR TO COMMENCEMENT OF FABRICATION.
- FABRICATION TO INCLUDE THE SUPPLY AND INSTALLATION OF SCHLEGEL ENGINEERING (OR SIMILAR APPROVED) DRAUGHT PROOFING SEAL'S COLOUR: WHITE.
- TIMBER SIZES INDICATED ON DETAILS ARE FINISHED SIZES.
- FABRICATION TO INCLUDE THE SUPPLY AND INSTALLATION OF BRASS/STAINLESS STEEL CASEMENT HINGES TO OPENING LIGHTS.
- WINDOW TIMBER COLOUR TO BE PAINTED WHITE TO MATCH EXISTING.
- IRONMONGERY TO BE AGREED
- WINDOW TO BE IN JOINERY QUALITY HARDWOOD.

\* Indicated safety glass in accordance with BS6206 and Part K of Building Regulations.

KENT BLAXHILL DOUBLE GLAZED UNITS TO COMPRISE:  
4MM SOFT COAT FLOAT GLASS (INTERNAL)  
6MM AIR GAP BLACK WARM EDGE SPACERS WITH KRYPTON GAS  
4MM FLOAT GLASS

**DOUBLE GLAZING BREAKDOWN OR MISTING**  
THIS IS CAUSED BY FAILURE OF THE GLAZING METHOD TO PROTECT THE UNIT SEAL FROM THE INGRESS OF WATER OR MOISTURE. ALL DOUBLE GLAZING SEALANTS USED IN THE MANUFACTURE OF DOUBLE GLAZING UNITS HAVE A MOISTURE VAPOUR TRANSMISSION RATE WHEN EXPOSED TO WATER OR MOISTURE, WHICH WILL CAUSE MISTING OR BREAKDOWN EVENTUALLY OVER A PERIOD OF TIME. WHERE UNITS ARE FOREPUTTIED, THE PUTTY MUST BE PAINTED AND ON TO THE GLASS TO PROVIDE A SEAL TO PROTECT THE PUTTY FROM MOISTURE INGRESS. FOREPUTTY SHOULD BE LEFT FOR 7 TO 10 DAYS BEFORE PAINTING. WINDOWS SHOULD BE PAINTED EVERY FIVE YEARS INLAND AND THREE YEARS COASTAL AREAS, WHICH WILL PROTECT THE GLAZING LONG TERM. ALL DOUBLE GLAZED UNITS ARE EDGE TAPED FOR EXTRA PROTECTION.

REVISION	DESCRIPTION	DATE	DRAWN	CHECK
----------	-------------	------	-------	-------

JOB NO.	5664	DRAWING NO.	PA_03	REVISION
---------	------	-------------	-------	----------

TITLE: Joinery Details

SCALE: 1:2 / 1:20 SHEET SIZE: A1

ISSUE DATE: November 2021

AUTHOR: TL CHECK: MC

PROJECT: PROPOSED RESIDENTIAL DEVELOPMENT

Street Farm, George Street,

Hintlesham, IP8 3NH

CLIENT: Mr S. White

STATUS: PLANNING



Wincer Kievenaar ARCHITECTS  
17/03473 827392 E: enquiry@wincerkievenaar.co.uk  
Do not scale from drawing, work to figured dimensions only.  
Copyright © Wincer Kievenaar Architects Limited  
5664\_PA03 Joinery Details.vwx