

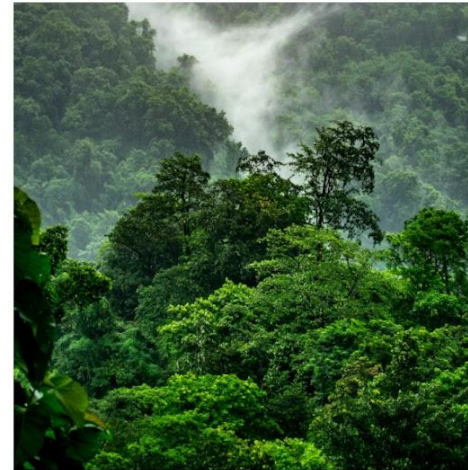
**Residential**



**MMC**

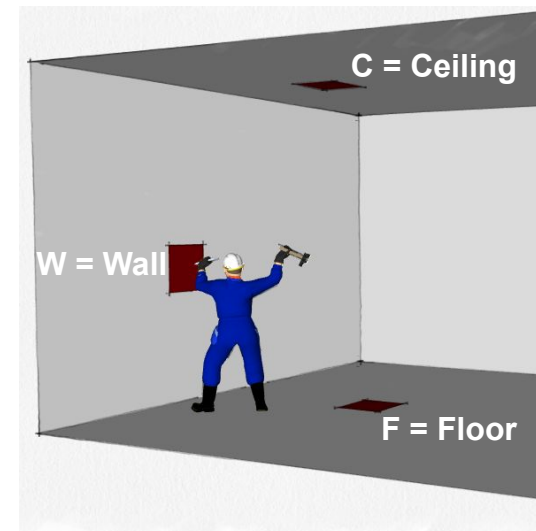
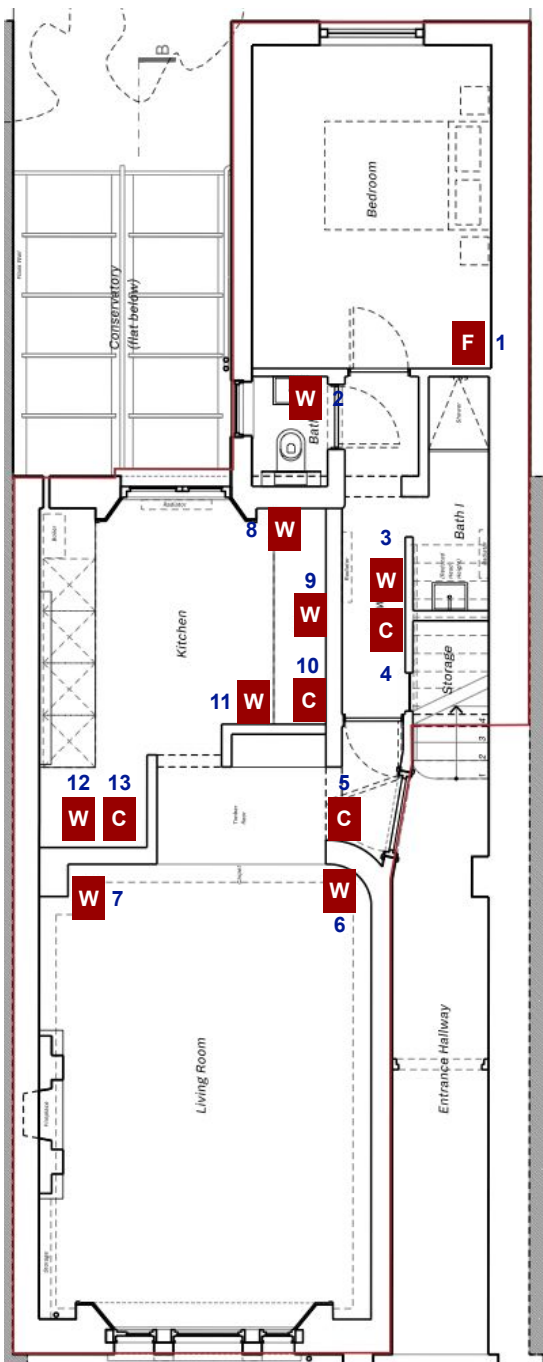


**Carbon Zero**



**99**

# Opening Up Works Design Clip



**CEILING**

Open square panel 400mm x 400mm or enough ceiling to be able to see:

- If there is a wall above
- Joist direction
- Joist height and width
- Joist spacing
- Steel beam (if any) height and width

**FLOOR**

Lift floorboard or enough to see:

- Joist direction
- Joist height and width
- Joist spacing
- Steel beam (if any) height and width

**WALL**

Open square panel of finishes 600mm x 600mm or enough finishes to be able to see:

- Wall material
- Finishes thickness
- Timber stud (if any) width and thickness

**NOTES** -01- IF you're not sure call John Hurle 07956 013942 -02- READ all other relevant project information before taking action -03- SCHEMATIC only and not to scale -04- COSTING to allow for level of design

**LISTED BUILDING**  
It is a criminal offence to commence any work to a Listed Building without the appropriate prior consent.

**TAKE Photos**  
send with photo and relevant number to [john@99structuralengineers.com](mailto:john@99structuralengineers.com)

**Not sure? ASK**  
call John Hurle 07956 013942









