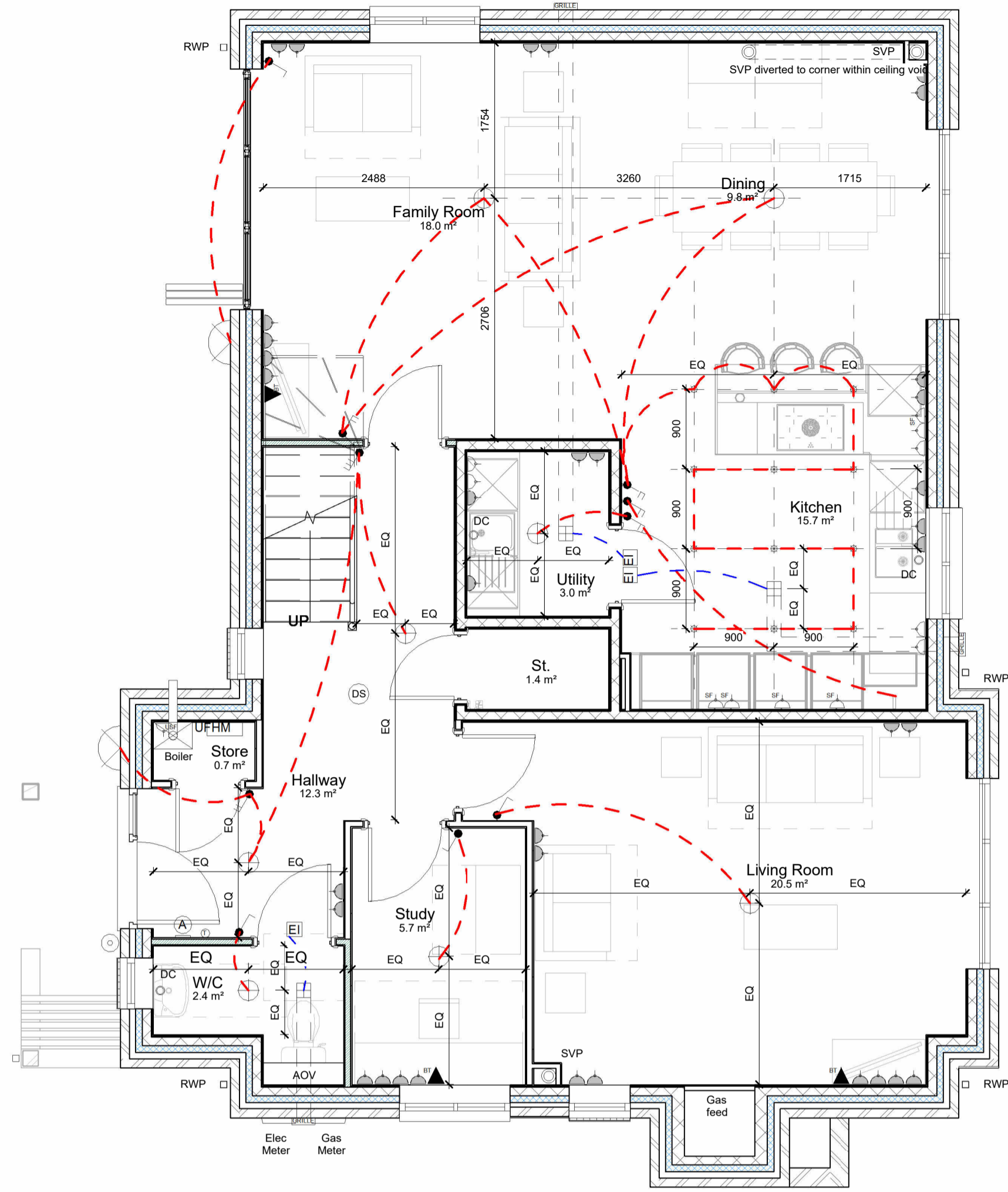
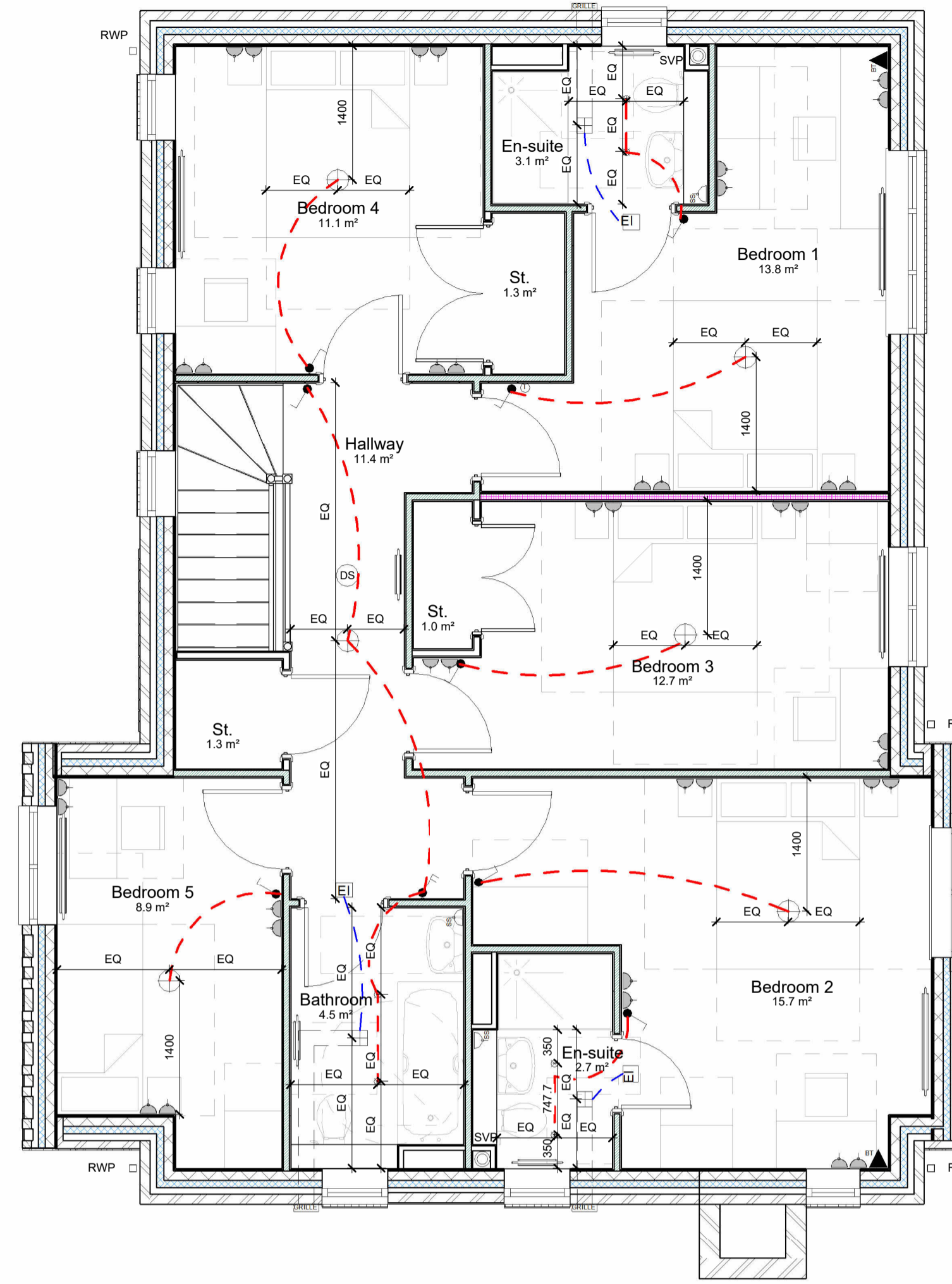


○ BOWKER SADLER PARTNERSHIP LIMITED
 ■ THIS DRAWING IS THE SUBJECT OF COPYRIGHT WHICH VESTS IN BOWKER SADLER PARTNERSHIP LIMITED. IT IS AN INFRINGEMENT OF COPYRIGHT TO REPRODUCE THIS DRAWING BY WHATEVER MEANS, INCLUDING ELECTRONIC, WITHOUT THE EXPRESS WRITTEN CONSENT OF BOWKER SADLER PARTNERSHIP LIMITED WHICH RESERVES ALL ITS RIGHTS.
 BOWKER SADLER PARTNERSHIP LIMITED ASSERTS ITS RIGHTS TO BE IDENTIFIED AS THE AUTHOR OF THIS DESIGN.
 ■ DRAWING NOT TO BE SCALED.
 ■ REPORT ERRORS & OMISSIONS TO ARCHITECT.
 ■ CHECK ALL DIMENSIONS ON SITE.
 ■ DRAWING TO BE READ IN CONJUNCTION WITH THE HEALTH AND SAFETY PLAN AND ALL RELEVANT RISK ASSESSMENTS.



Ground Floor Plan

1 : 50



First Floor Plan

1 : 50

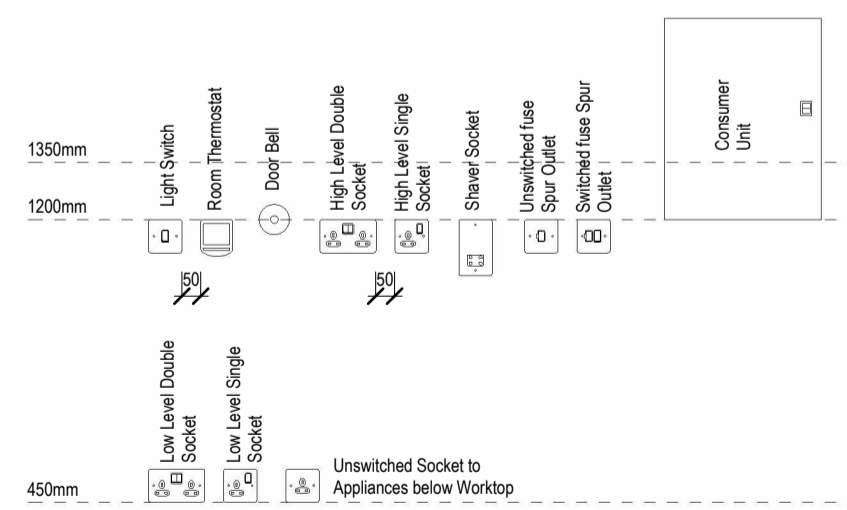
Electrical Symbols Legend

1 Gang Switch	Low Level Single Switched Socket	Dual Voltage Shower Socket
2 Gang Switch	High Level Single Switched Socket	External Wall Mounted Grille
3 Gang Switch	Low Level Double Switched Socket	Consumer Unit
4 Gang Switch	High Level Double Switched Socket	UFHM Under Floor Heating Manifold
Switched Fuse Spur	Extract Isolator Switch	Smoke detector to top and bottom of stairs to be linked together and connected to mains supply to BS5446-2:2003 Part 1 for smoke alarms and part 2 for heat alarms. All with battery backup.
Unswitched Fuse Spur	TV/IT Point	DS
External Lighting Fixture	Ceiling Mounted Extract Fan With Duct Run	DH
Standard Light Pendant	Light Switch Cable Run	CD
Down Light Can	Extract Isolator Cable Run	A
*Grace light to kitchen manufacturer's details		DB

M&E Electrical Key

1 : 50

Miscellaneous Electrical Fittings



Electrical Setting Out

1 : 20

REV.	DATE	DRN.	CHKD.
C	9/11/21	KM	Minor amendments to suit client comments.
B	30/09/21	KM	Minor amendments to suit client comments.
A	14/09/21	KM	Minor amendments to suit client comments.

PROJECT

Panflora Nurseries

CLIENT
Edgefold Homes Ltd.

DRAWING
Plot 2 - M&E Plans

SCALE	SHEET SIZE	DRAWN	CHECKED	DATE
As indicated	@ A1	KS	KLM	12/08/21

BOWKER SADLER ARCHITECTURE
 A: Hatherlow House, Hatherlow, Romiley, Stockport SK6 3DY
 T: 0161 406 7333
 E: office@bowker-sadler.co.uk
 W: www.bowker-sadler.co.uk

JOB No	DRAWING No	REVISION
18062	2032	C

STATUS
Building Regulations

