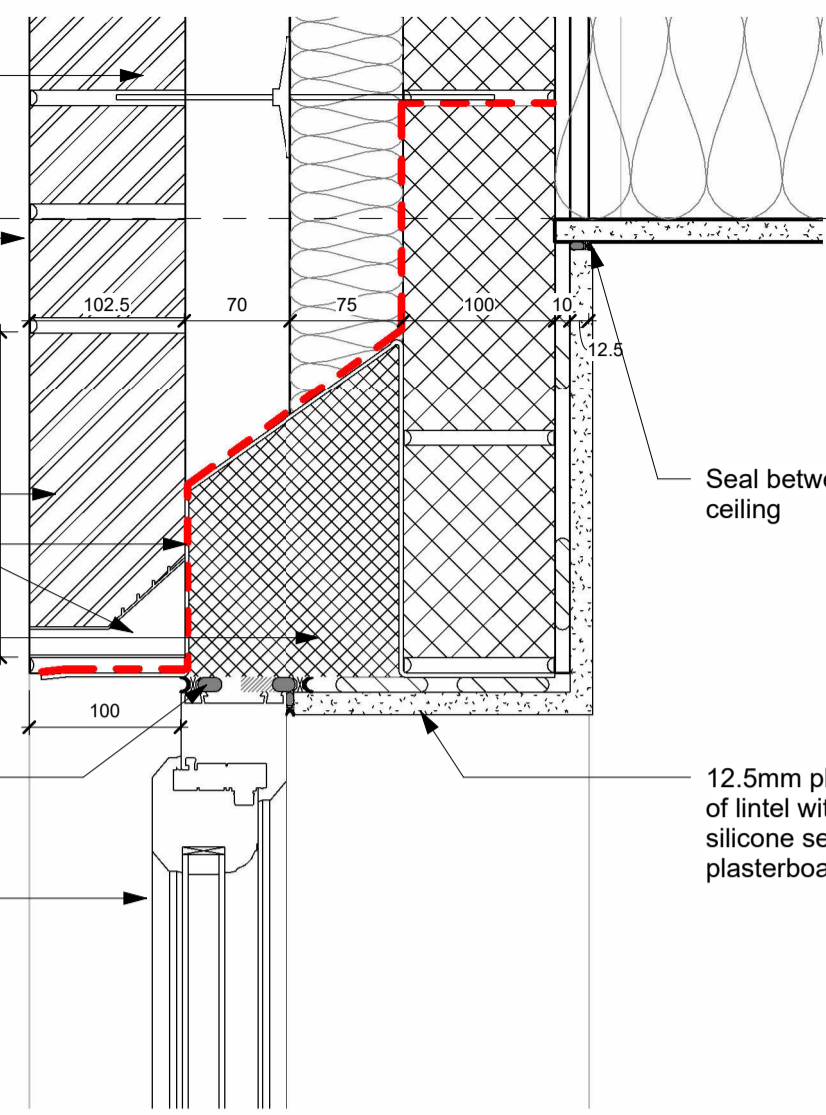


○ BOWKER SADLER PARTNERSHIP LIMITED
 ■ THIS DRAWING IS THE SUBJECT OF COPYRIGHT WHICH VESTS IN BOWKER SADLER PARTNERSHIP LIMITED. IT IS AN INFRINGEMENT OF COPYRIGHT TO REPRODUCE THIS DRAWING BY WHATEVER MEANS, INCLUDING ELECTRONIC, WITHOUT THE EXPRESS WRITTEN CONSENT OF BOWKER SADLER PARTNERSHIP LIMITED WHICH RESERVES ALL ITS RIGHTS.
 BOWKER SADLER PARTNERSHIP LIMITED ASSERTS ITS RIGHTS TO BE IDENTIFIED AS THE AUTHOR OF THIS DESIGN.
 ■ DRAWING NOT TO BE SCALED.
 ■ REPORT ERRORS & OMISSIONS TO ARCHITECT.
 ■ CHECK ALL DIMENSIONS ON SITE.
 ■ DRAWING TO BE READ IN CONJUNCTION WITH THE HEALTH AND SAFETY PLAN AND ALL RELEVANT RISK ASSESSMENTS

Wall ties with insulation retaining clip as structural engineers specification. Wall ties to be within 225mm of opening and not more than 300mm vertical spacing

Top of Wall
5100

102.5mm brickwork with 70mm clear cavity (53mm at recessed brick feature detail) with 75mm rigid insulation board, Celotex CW4000 or equal approved with thermal conductivity of 0.022 W/mk, and 100mm medium density concrete blockwork (7.3N), with 12.5mm plasterboard on adhesive dabs and 2.5mm thick plaster skim coat, to achieve a minimum U-value of 0.21W/m²K
 Brick soldiercourse to window head
 Cavity tray with proprietary weephole at 450 centres above openings over lintol
 Thermally broken lintel to SE specification, cavity tray over steel lintel with weep holes at 450mm centres
 Mastice seal to perimeter of frame with expanding foam behind as secondary seal
 UPVC window with extended cills to suit 100mm window reveal, see Window Schedules for type and configuration, Window's to be fixed in accordance with manufacturer's details. All window frames to be light grey
 To achieve a U value of 1.40W/m²K



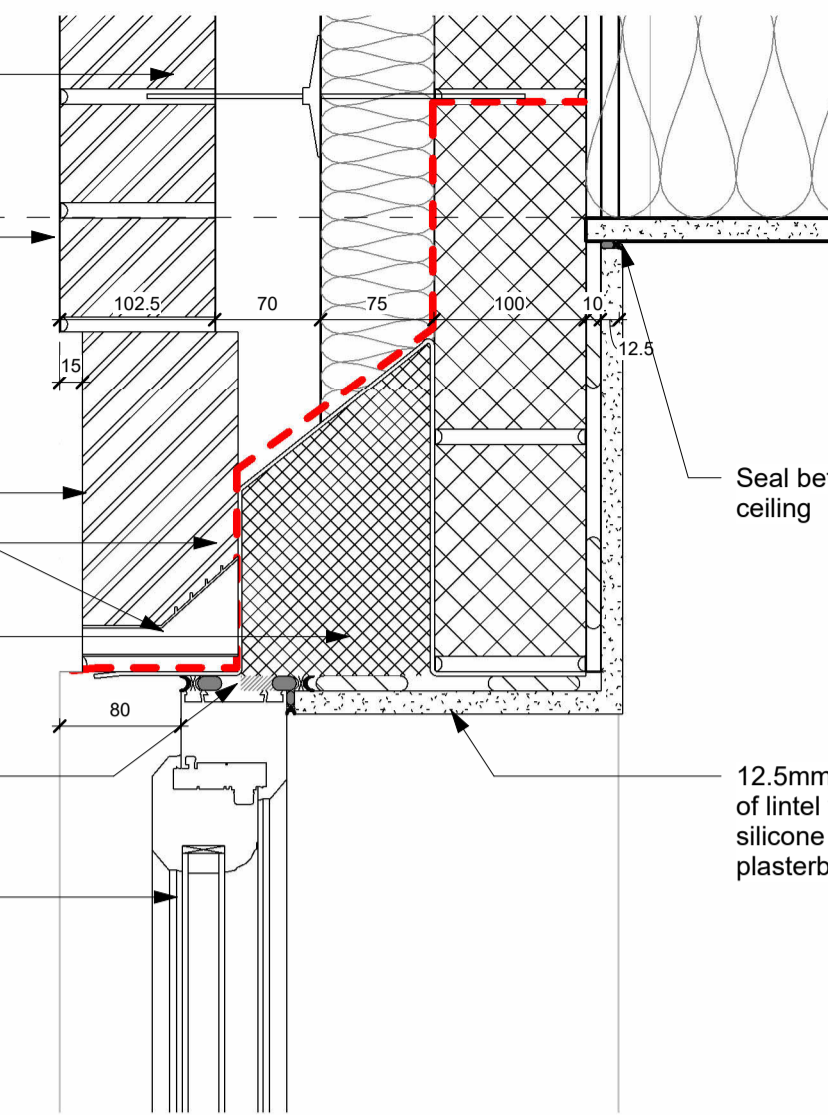
Seal between plasterboard at wall and ceiling

12.5mm plasterboard on dabs to underside of lintel with plaster skim finish. Continuous silicone sealant to perimeter of window with plasterboard

Wall ties with insulation retaining clip as structural engineers specification. Wall ties to be within 225mm of opening and not more than 300mm vertical spacing

Top of Wall
5100

102.5mm brickwork with 70mm clear cavity (53mm at recessed brick feature detail) with 75mm rigid insulation board, Celotex CW4000 or equal approved with thermal conductivity of 0.022 W/mk, and 100mm medium density concrete blockwork (7.3N), with 12.5mm plasterboard on adhesive dabs and 2.5mm thick plaster skim coat, to achieve a minimum U-value of 0.21W/m²K
 Recessed brick soldiercourse to window head
 Cavity tray with proprietary weephole at 450 centres above openings over lintol
 Thermally broken lintel to SE specification, cavity tray over steel lintel with weep holes at 450mm centres
 Mastice seal to perimeter of frame with expanding foam behind as secondary seal
 UPVC window with extended cills to suit 100mm window reveal, see Window Schedules for type and configuration, Window's to be fixed in accordance with manufacturer's details. All window frames to be light grey
 To achieve a U value of 1.40W/m²K



Seal between plasterboard at wall and ceiling

12.5mm plasterboard on dabs to underside of lintel with plaster skim finish. Continuous silicone sealant to perimeter of window with plasterboard

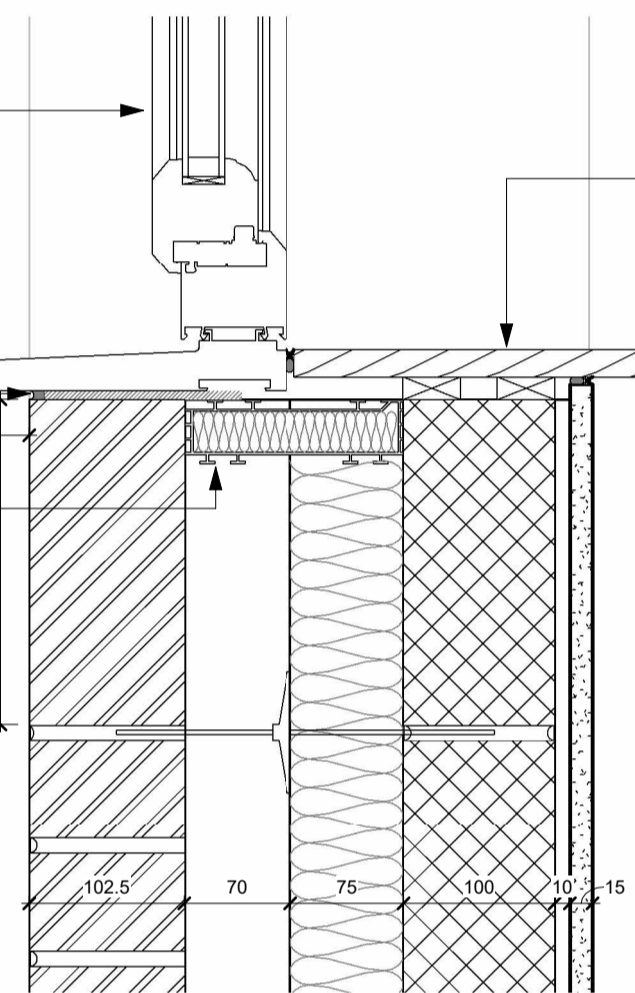
Section Through Window with Recessed Brick Soldier Head

2
1:5

Section Through Window with Brick Soldier Head and Cill

1
1:5

UPVC window with extended cills to suit 100mm window reveal, see Window Schedules for type and configuration, Window's to be fixed in accordance with manufacturer's details. All window frames to be light grey
To achieve a U value of 1.40W/m²K



18mm MDF moisture resistant cill board fixed down to batten with vapour barrier behind as manufacturers details. Provide mastic seal between window board and plasterboard/window.

Mastic seal to perimeter of frame with expanding foam behind as secondary seal

Proprietary insulated fire resisting cavity closer, ARC Eco-closer or equal approved

A 9/11/21 KM Minor amendments to suit client comments.

REV.	DATE	DRN.	CHKD.

PROJECT

Panflora Nurseries

CLIENT

Edgefold Homes Ltd.

DRAWING

Typical Section Details
Sheet 6

SCALE	SHEET SIZE	DRAWN	CHECKED	DATE
1:5	@ A1	KLM	Checker	26/08/2021

BOWKER SADLER ARCHITECTURE

A: Hatherlow House, Hatherlow, Romiley, Stockport SK6 3DY
 T: 0161 406 7333
 E: office@bowker-sadler.co.uk
 W: www.bowker-sadler.co.uk

JOB No	DRAWING No	REVISION
18062	6505	A

STATUS
Building Regulations

