

Site layout legend	Proposed site boundary
Black paving	Red line site area: 4796.4sqm
Tarmac finish	Proposed tree planting
Golden Amber Gravel	Existing tree planting (root protection in red)
Amber to grass	Removed trees
Low level landscape planting	1.8 C&P - 1.8m close boarded linear fence
New wall	No dig construction

**INDICATIVE LANDSCAPE PROPOSALS**  
 Note: These proposals are indicative only and are subject to change. The final landscape plan shall be subject to the approval of the Planning Authority and the relevant statutory bodies. The final landscape plan shall be subject to the approval of the Planning Authority and the relevant statutory bodies.

**Proposed Planting Details & Specification**  
 All areas of new landscaping to be planted shall be detailed in accordance with the following table. All areas of new landscaping to be planted shall be detailed in accordance with the following table. All areas of new landscaping to be planted shall be detailed in accordance with the following table.

**Tree Protection**  
 All trees to be protected shall be detailed in accordance with the following table. All trees to be protected shall be detailed in accordance with the following table. All trees to be protected shall be detailed in accordance with the following table.

**Soil Protection**  
 All areas of soil to be protected shall be detailed in accordance with the following table. All areas of soil to be protected shall be detailed in accordance with the following table. All areas of soil to be protected shall be detailed in accordance with the following table.

**Soil Protection**  
 All areas of soil to be protected shall be detailed in accordance with the following table. All areas of soil to be protected shall be detailed in accordance with the following table. All areas of soil to be protected shall be detailed in accordance with the following table.

**Soil Protection**  
 All areas of soil to be protected shall be detailed in accordance with the following table. All areas of soil to be protected shall be detailed in accordance with the following table. All areas of soil to be protected shall be detailed in accordance with the following table.

**Soil Protection**  
 All areas of soil to be protected shall be detailed in accordance with the following table. All areas of soil to be protected shall be detailed in accordance with the following table. All areas of soil to be protected shall be detailed in accordance with the following table.

**Soil Protection**  
 All areas of soil to be protected shall be detailed in accordance with the following table. All areas of soil to be protected shall be detailed in accordance with the following table. All areas of soil to be protected shall be detailed in accordance with the following table.

**Soil Protection**  
 All areas of soil to be protected shall be detailed in accordance with the following table. All areas of soil to be protected shall be detailed in accordance with the following table. All areas of soil to be protected shall be detailed in accordance with the following table.

**Soil Protection**  
 All areas of soil to be protected shall be detailed in accordance with the following table. All areas of soil to be protected shall be detailed in accordance with the following table. All areas of soil to be protected shall be detailed in accordance with the following table.

**Soil Protection**  
 All areas of soil to be protected shall be detailed in accordance with the following table. All areas of soil to be protected shall be detailed in accordance with the following table. All areas of soil to be protected shall be detailed in accordance with the following table.

**Soil Protection**  
 All areas of soil to be protected shall be detailed in accordance with the following table. All areas of soil to be protected shall be detailed in accordance with the following table. All areas of soil to be protected shall be detailed in accordance with the following table.

**Soil Protection**  
 All areas of soil to be protected shall be detailed in accordance with the following table. All areas of soil to be protected shall be detailed in accordance with the following table. All areas of soil to be protected shall be detailed in accordance with the following table.

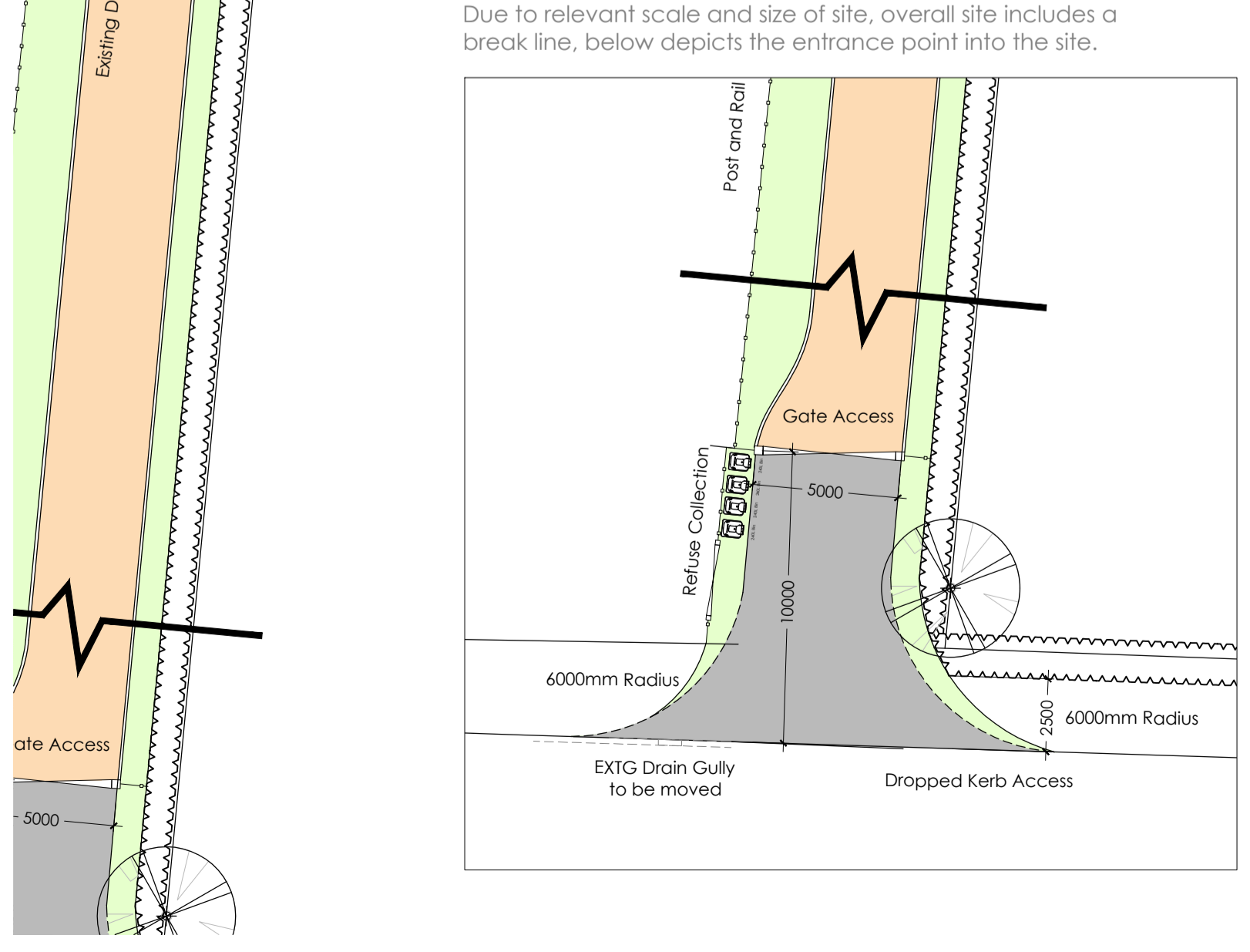
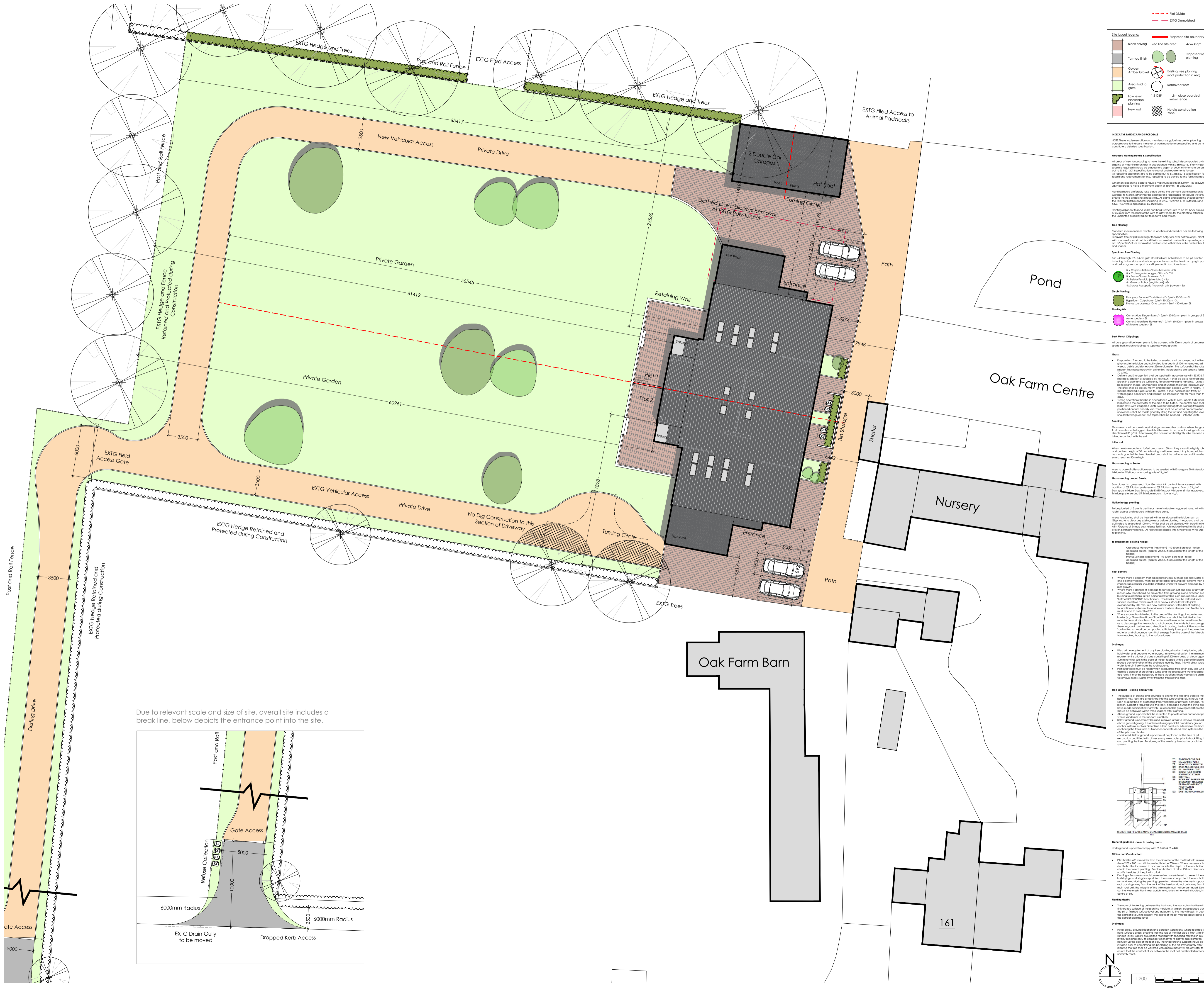
**Soil Protection**  
 All areas of soil to be protected shall be detailed in accordance with the following table. All areas of soil to be protected shall be detailed in accordance with the following table. All areas of soil to be protected shall be detailed in accordance with the following table.

**Soil Protection**  
 All areas of soil to be protected shall be detailed in accordance with the following table. All areas of soil to be protected shall be detailed in accordance with the following table. All areas of soil to be protected shall be detailed in accordance with the following table.

**Soil Protection**  
 All areas of soil to be protected shall be detailed in accordance with the following table. All areas of soil to be protected shall be detailed in accordance with the following table. All areas of soil to be protected shall be detailed in accordance with the following table.

**Soil Protection**  
 All areas of soil to be protected shall be detailed in accordance with the following table. All areas of soil to be protected shall be detailed in accordance with the following table. All areas of soil to be protected shall be detailed in accordance with the following table.

**Soil Protection**  
 All areas of soil to be protected shall be detailed in accordance with the following table. All areas of soil to be protected shall be detailed in accordance with the following table. All areas of soil to be protected shall be detailed in accordance with the following table.



C 03/12/21 - Amendments to meet Planning Feedback Regarding Removal of Red Line  
 B 26/11/21 - Amendments to meet Client Feedback Regarding Notes A 26/11/21 - Amendments to meet Client Feedback Regarding Red Line

Revision Notes:  
 Drawing Status:

**PLANNING**

**hssp architects**

Pera Business Park, Nottingham Road  
 Melton Mowbray, LE13 0PB

Telephone: 01664 563 288 Fax: 01664 563 360  
 E-Mail: info@hssparchitects.co.uk Web: www.hssparchitects.co.uk

Project:  
 Barn Conversion  
 Oak Farm, Drayton lane  
 Drayton Bassett  
 Helen and Sarah Jones

Title:  
 Proposed Site Plan

Scale:	1:200	Drawn:	DLB	Checked:	HC	Date:	Dec '21
Drawing No.:	8454-03-01	Revision:	C				

HSP A1