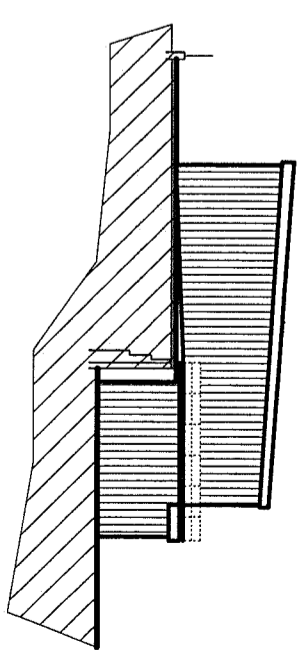
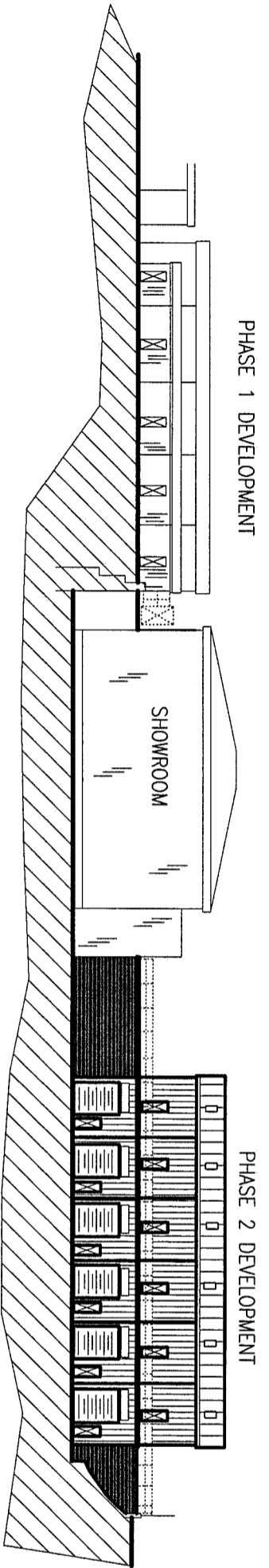


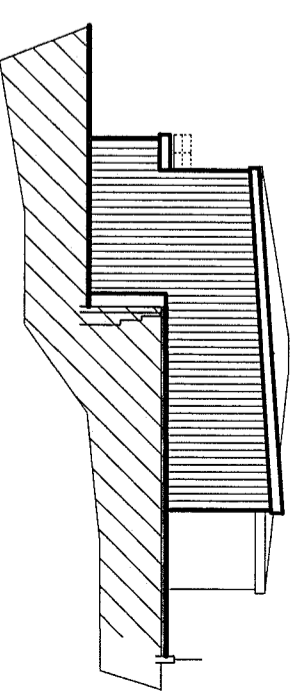
FRONTAGE VIEW EAST FACING



NORTH SIDE VIEW



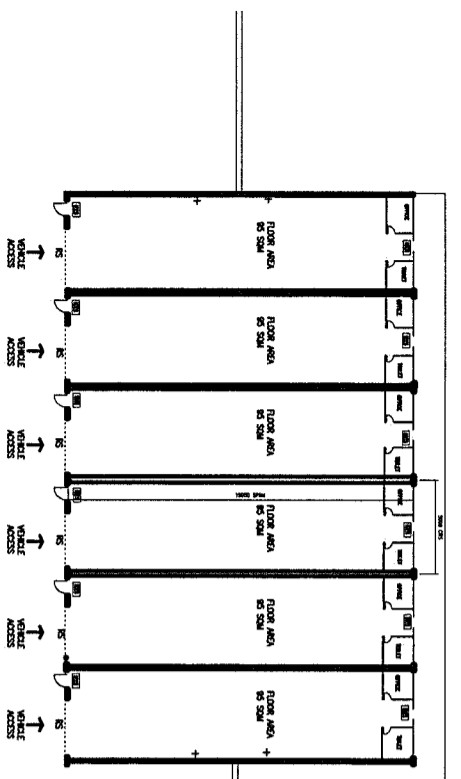
REAR VIEW WEST FACING



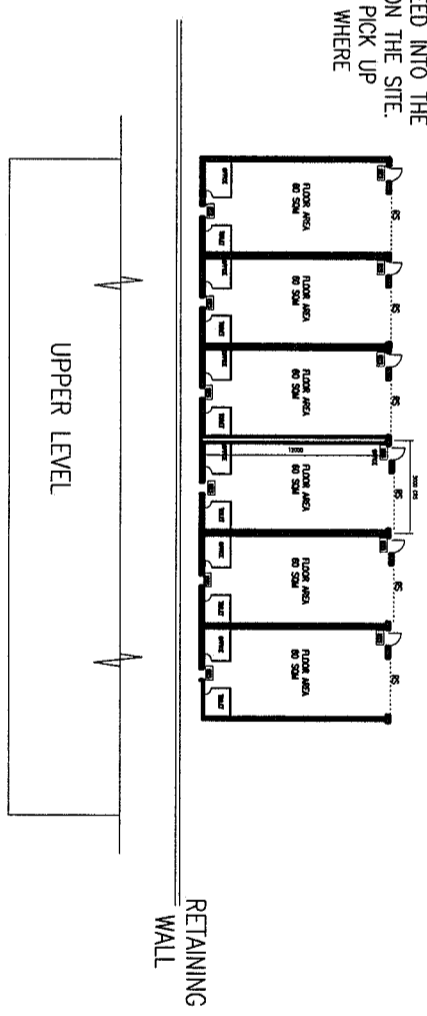
SOUTH SIDE VIEW

ALL HANDRAILS TO BE FORMED IN STEEL TUBE TO SUIT THE MANUFACTURERS SUPPLIES. ALL HANDRAILS TO BE INFILLED WITH 50mm OPEN MASH STEEL AND PAINTED RED

ALL STORM WATER OUTLETS TO FEED INTO THE EXISTING STORM DRAIN SYSTEMS ON THE SITE. IN ADDITION ALL FOUL DRAINS TO PICK UP WITH THE SOIL OUTLET CHAMBERS WHERE CONVENIENT.



UPPER FLOOR PLAN LAYOUT



LOWER FLOOR PLAN LAYOUT

600 SQM TOTAL FLOOR SPACE
360 SQM TOTAL GROUND FLOOR SPACE

ALL SHOP FRONTAGES IN 'SEAGOS BLUE' TOGETHER WITH ALL TRIMS, FRAMES TO BE IN COLOUR COATED STEEL AND GLAZING TO BE 8mm THICK SAFETY GLASS
ROLLER SHUTTER AND ESCAPE DOORS IN LIGHT GREY PEDESTRIAN DOORS TO BE HALF HOUR FIRE RATED THROUGHOUT.
STALL RISERS IN AUTUMN GOLD FACE BRICK. DOWN PIPES AND WATER TROUGHS IN 'SEAGOS BLUE'.
INNER ROOMS TO BE MECHANICALLY VENTILATED TO GIVE FOUR AIR CHANGES PER HOUR TO THE OUTSIDE PARTICULARLY WITH THE TOILET FACILITIES
DOORS AND WINDOW LOCATIONS ARE SHOWN TO SHOW THE POTENTIAL USE OF THE BUILDING. INTERNAL SIZES AND LAYOUTS CAN BE CHANGED WITHIN REASON FOR THE OCCUPANTS NEEDS AND REQUIREMENTS AS LONG AS THE BUILDING REGULATIONS ARE MAINTAINED

PROPOSED ELEVATIONS FOR 12 INDUSTRIAL UNITS FAIRVIEW GARAGE SITE

DRG REF 21/CC/905A

SCALE 1:500 ON A3