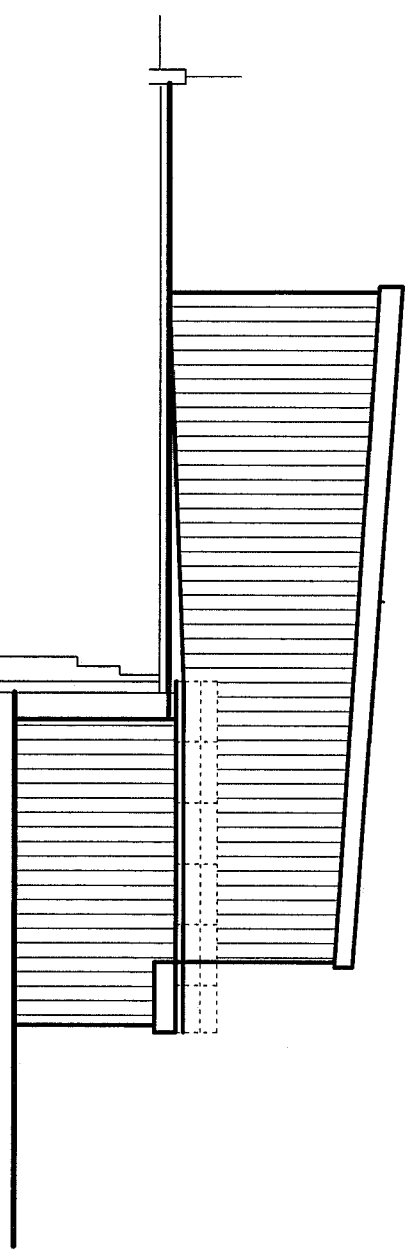
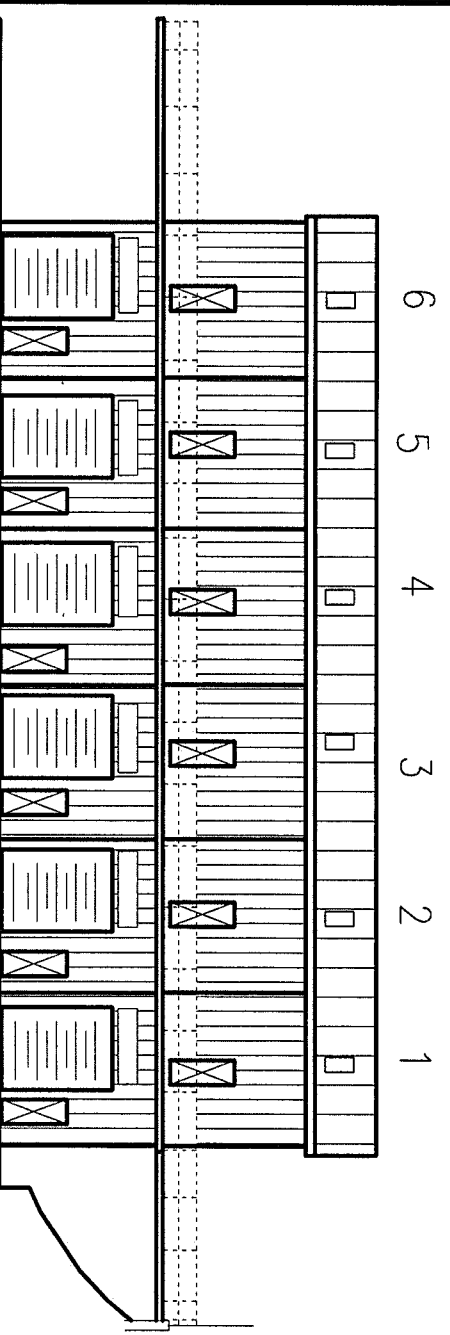


FRONTAGE VIEW EAST FACING
PHASE 2 DEVELOPMENT

DOORS AND WINDOW LOCATIONS ARE SHOWN TO SHOW THE POTENTIAL USE OF THE BUILDING. INTERNAL SIZES AND LAYOUTS CAN BE CHANGED WITHIN REASON FOR THE OCCUPANTS NEEDS AND REGULATIONS AS LONG AS THE BUILDING REGULATIONS ARE MAINTAINED



NORTH SIDE VIEW



REAR VIEW WEST FACING
PHASE 2 DEVELOPMENT

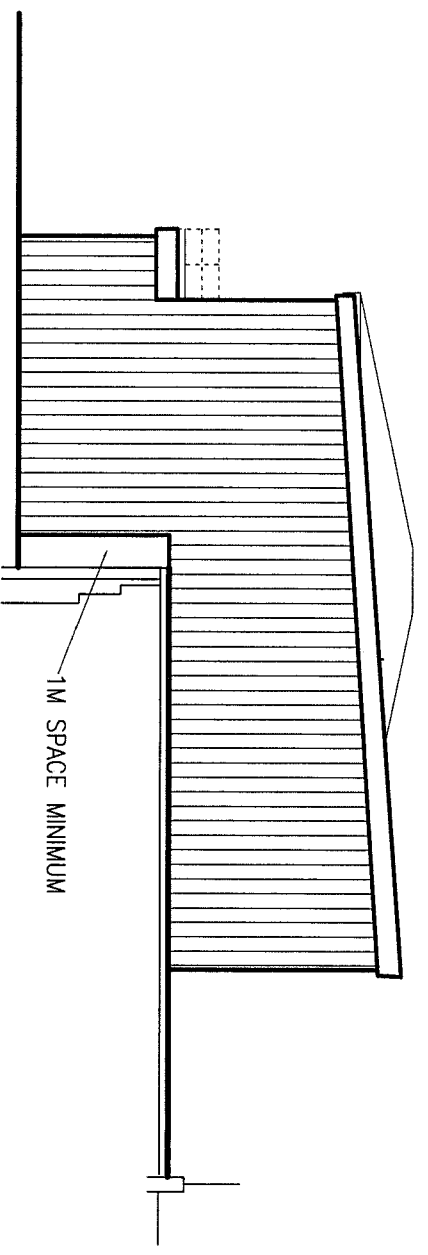
PROPOSED FINISHES
ROOFING AND ELEVATION COLOR COATED SHEETING IN GOOSE WING GREY.

ALL SHOP FRONTAGES IN 'SEAGOS BLUE' TOGETHER WITH ALL TRIMS. FRAMES TO BE IN COLOR COATED STEEL AND GLAZING TO BE 8mm THICK SAFETY GLASS

ROLLER SHUTTER AND ESCAPE DOORS IN LIGHT GREY. PEDESTRIAN DOORS TO BE HALF HOUR FIRE RATED THROUGHOUT.

STALL RISERS IN AUTUMN GOLD FACE BRICK. DOWN PIPES AND WATER TROUGHS IN 'SEAGOS BLUE.

INNER ROOMS TO BE MECHANICALLY VENTILATED TO GIVE FOUR AIR CHANGES PER HOUR TO THE OUTSIDE PARTICULARLY WITH THE TOILET FACILITIES



SOUTH SIDE VIEW

ALL HANDRAILS TO BE FORMED IN STEEL TUBE TO SUIT THE MANUFACTURERS SUPPLIES. ALL HANDRAILS TO BE INFILLED WITH 50mm OPEN MASH STEEL AND PAINTED RED

ALL STORM WATER OUTLETS TO FEED INTO THE EXISTING STORM DRAIN SYSTEMS ON THE SITE. IN ADDITION ALL FOUL DRAINS TO PICK UP WITH THE SOIL OUTLET CHAMBERS WHERE CONVENIENT.

600 SQM TOTAL FLOOR SPACE
360 SQM TOTAL GROUND FLOOR SPACE

DRG REF 21/CC/906A

PROPOSED ELEVATIONS FOR 12 BAY UNITS

PHASE 2

SCALE 1:250 ON A3