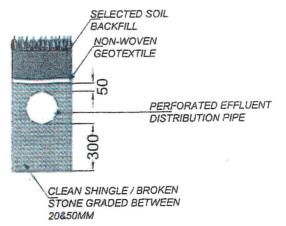
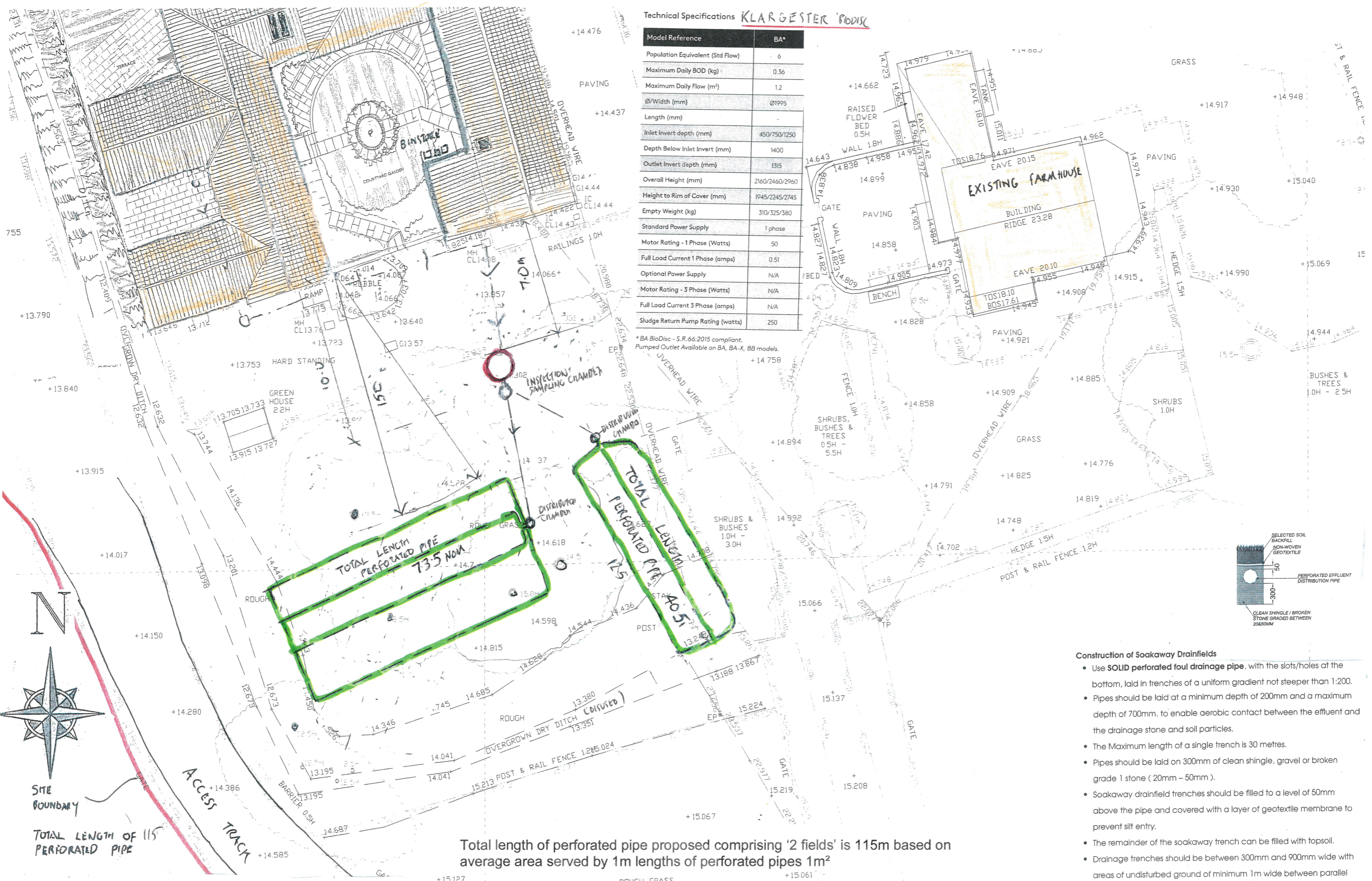


Technical Specifications **KLARGESTER 'BODISC'**

Model Reference	BA*
Population Equivalent (Std Flow)	6
Maximum Daily BOD (kg)	0.36
Maximum Daily Flow (m³)	1.2
Ø/Width (mm)	Ø1995
Length (mm)	
Inlet Invert depth (mm)	450/750/1250
Depth Below Inlet Invert (mm)	1400
Outlet Invert depth (mm)	1315
Overall Height (mm)	2160/2460/2960
Height to Rim of Cover (mm)	1945/2245/2745
Empty Weight (kg)	310/325/380
Standard Power Supply	1 phase
Motor Rating - 1 Phase (Watts)	50
Full Load Current 1 Phase (amps)	0.51
Optional Power Supply	N/A
Motor Rating - 3 Phase (Watts)	N/A
Full Load Current 3 Phase (amps)	N/A
Sludge Return Pump Rating (watts)	250

* BA BioDisc - S.R.66:2015 compliant.
Pumped Outlet Available on BA, BA-X, BB models.



- Construction of Soakaway Drainfields**
- Use **SOLID** perforated foul drainage pipe, with the slots/holes at the bottom, laid in trenches of a uniform gradient not steeper than 1:200.
 - Pipes should be laid at a minimum depth of 200mm and a maximum depth of 700mm, to enable aerobic contact between the effluent and the drainage stone and soil particles.
 - The Maximum length of a single trench is 30 metres.
 - Pipes should be laid on 300mm of clean shingle, gravel or broken grade 1 stone (20mm – 50mm).
 - Soakaway drainfield trenches should be filled to a level of 50mm above the pipe and covered with a layer of geotextile membrane to prevent silt entry.
 - The remainder of the soakaway trench can be filled with topsoil.
 - Drainage trenches should be between 300mm and 900mm wide with areas of undisturbed ground of minimum 1m wide between parallel trenches.

Total length of perforated pipe proposed comprising '2 fields' is 115m based on average area served by 1m lengths of perforated pipes 1m²



SCALE OF METRES
Southern Part of Site Showing Proposed Foul Drainage System Scale 1:200 @ A3

Proposed Agricultural Dwelling,
Little Farm, Rimswell Road, Halsham, Hull HU12 0BT
October 2021 Job No. 2504 Drawing No. Pl-2
Jonathan S. Hobson R.I.B.A.
Ingleby and Hobson Architects RIBA
FIRST FLOOR, 28 LAIRGATE, BEVERLEY, E. YORKSHIRE, HU17 8EP
Tel: 01482 868690 email: inghob@gmail.com
Note this drawing is Copyright & shall not be reproduced or made use of without the authority of Ingleby & Hobson Ltd Architects

16 DEC 2021

