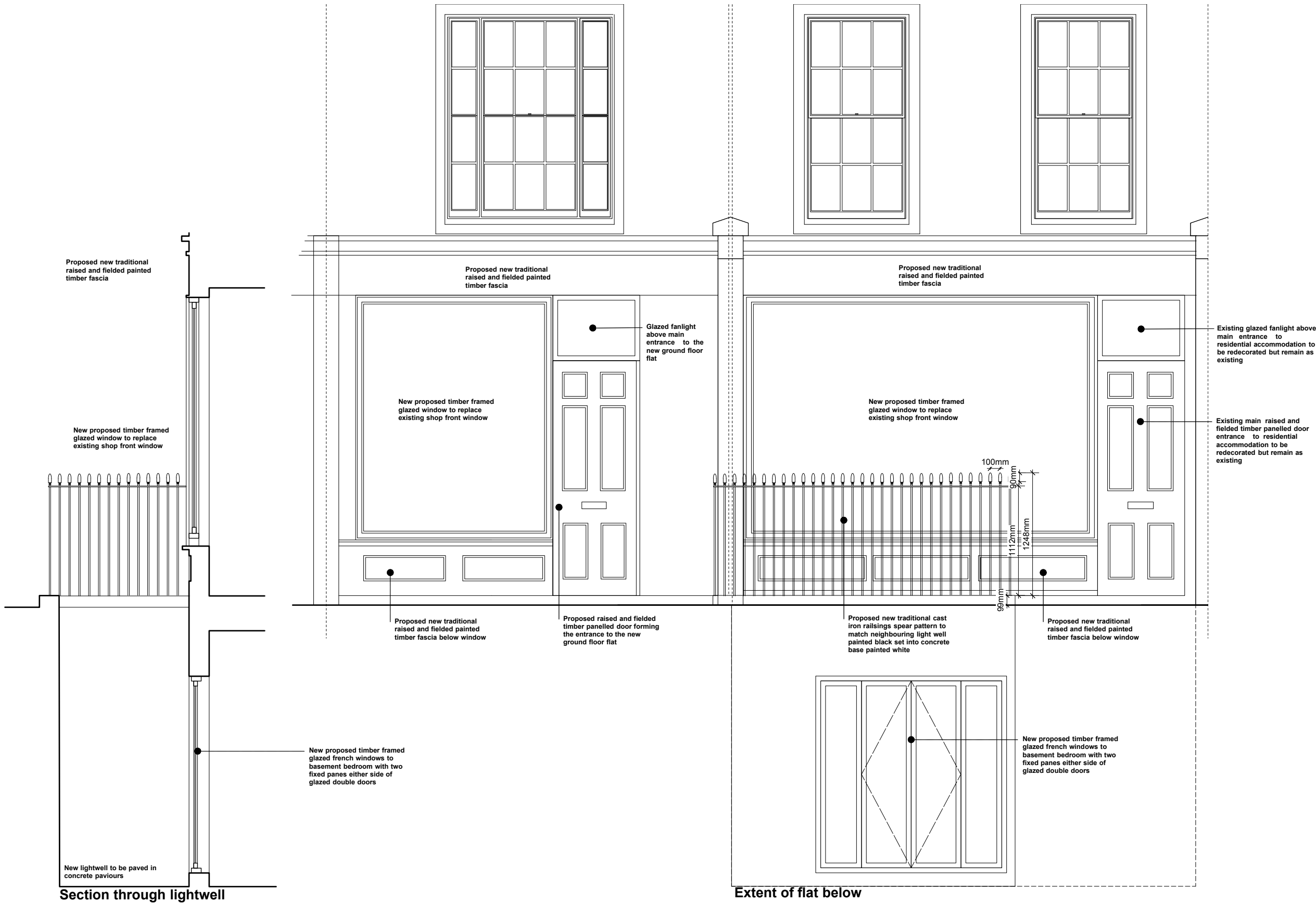


GENERAL NOTES

GENERAL



Cambridge Street Front Elevation & Section through light well

REVISIONS
A: Glazing bars and opennable windows removed from front elevation 13th Dec '21

CLIENT	Woodhouse International Inc		
PROJECT	59 Cambridge Street, London SW1V 4PS		
LOCAL AUT.	City of Westminster		
DWG STATUS	Planning Conditions	APPROVED	
TITLE	Proposed Combined Front Elevation & Section		
DATE	02/08/2021	SCALE	1:20 @ A1 - 1:40 @ A3
JOB No 521	DWG No C01		REV A