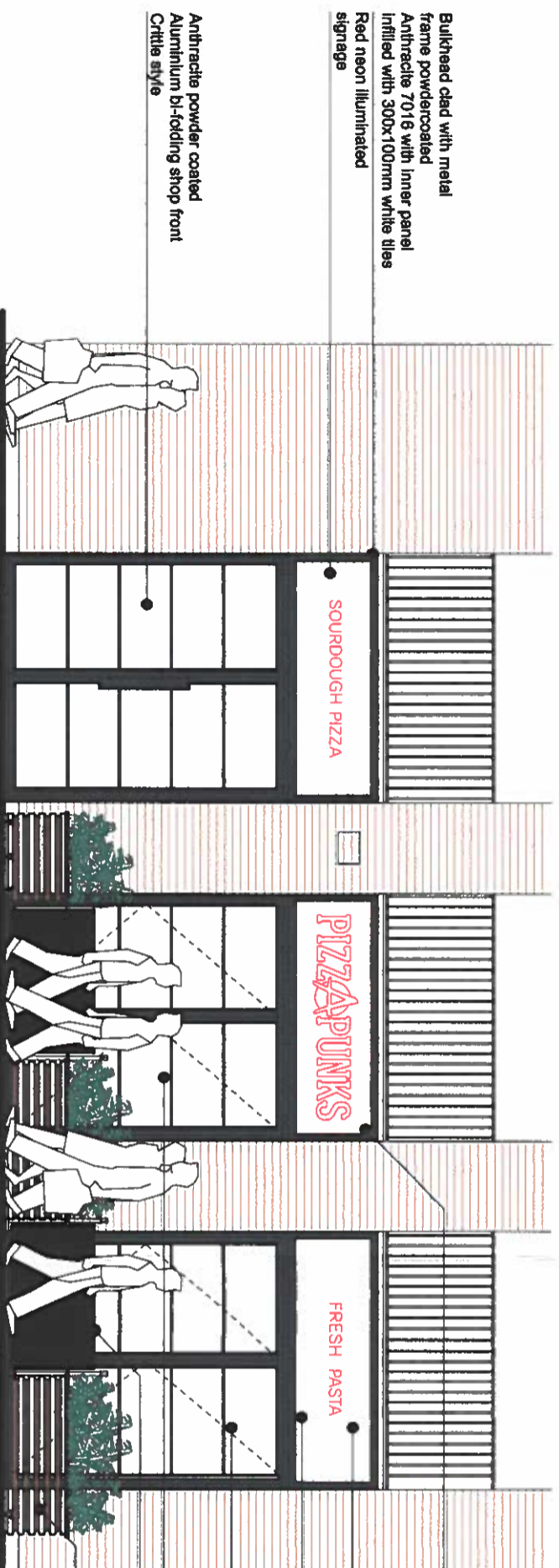


Fascia Section



Bulkhead clad with metal
 frame powdercoated
 Anthracite 7016 with inner panel
 Infilled with 300x100mm white tiles
 Red neon illuminated
 signage

PROPOSED FRONT ELEVATION Scale 1:50 @A1



Bulkhead clad with metal
 frame powdercoated
 Anthracite 7016 with inner panel
 Infilled with 300x100mm white tiles
 Red neon illuminated
 signage

Anthracite powder coated
 Aluminium bi-folding shop front
 Crittle style

Red neon illuminated
 signage
 Bulkhead clad with metal
 frame powdercoated
 Anthracite 7016 with inner panel
 Infilled with 300x100mm white tiles
 Red neon illuminated
 signage
 Anthracite powder coated
 Aluminium bi-folding shop front
 Crittle style
 Anthracite powder coated
 Aluminium bi-folding shop front
 Crittle style
 Black fabric barriers
 Hardwood planters
 all stained
 Dark Walnut

PROPOSED FRONT ELEVATION INCLUDING PLANTERS AND SCREENS Scale 1:50 @A1



HARPER SIGNS
 Since 1954

Harvey Combe Station Road Killingworth
 Newcastle upon Tyne NE12 6QG
 Tel (0191) 268 6394
 www.harpersigns.co.uk
 e: signs@harpersigns.co.uk

Client: Pizza Punks

Site: Unit 7,
 The Gates,
 The Riverwalk,
 Durham,
 DH1 4SJ

Title: Proposed Neon Fascia Signage

Drawn: *J. Gray* Date: 18/11/21

Scale: Varies

Drawing No. Sales-WWH-PPD-01 Rev:0