


Document	Heritage Design and Access Statement (includes construction method statement)
Project	Whitelee – Catcleugh Stell visitor interpretation
Parish	Byrness with Rochester
	

1) Introduction

The Revitalising Redesdale Landscape Partnership aims to conserve and enhance the distinctive landscape character of Redesdale embodied in its natural environment, heritage and cultural traditions whilst adopting approaches which are relevant to the changing values and needs of the 21st Century.

Redesdale is a remote upland area of west Northumberland which adjoins the Anglo-Scottish border at Carter Bar. As a frontier and strategic corridor, Redesdale has been shaped by centuries of conflict since Roman times. This is Border Reiver country where allegiances were to family rather than country or crown. The valley's history shaped the landscape and its people, resulting in a sense of wilderness and leaving a rich, but increasingly threatened legacy of natural, built and cultural heritage.

The Revitalising Redesdale Project area covers the entire Rede catchment from where the River Rede rises at Carter Bar on the Anglo-Scottish border to its confluence with the North Tyne. A £2.8 million Partnership Scheme funded by the National Lottery Heritage Fund, will deliver a lasting legacy that seeks to reinforce the special character and identity of Redesdale and its communities.

The scheme has 6 parts:

- Deliver improvements to habitats across Redesdale to enhance wider habitat connectivity and enhance its resilience to external pressures, including climate change.
- Create a pool of trained volunteers living within the valley or the surrounding area, who will be engaged and interested in continuing to be involved in conserving and enhancing the heritage of the valley.
- Leave historic monuments and archaeological sites in a better condition and have management plans in place to maintain their condition.
- Instigate ecological, archaeological and history research projects which will ensure that important sites in the valley have been recorded on regional databases to protect them in the future.
- Provide new interpretative material and develop promoted walking routes around village hubs to encourage more visitors and local people to explore Redesdale and its heritage for themselves.
- Develop Redesdale as a visitor destination and stop-off point on the way to and from Scotland.

The Redesdale Valley is full of 'Frontier' stories. Raids and skirmishes to full-scale battle stories pepper the landscape, emphasising the unrest deep in the valley's history. These stories fade as settlers build more permanent homes, looking to work and farm the land. Meanwhile the Rede continues its timeless journey through the hills attracting a wide range of wildlife both to its banks and the diverse environments that surround its route.

An exciting range of interpretation has been developed to tell these stories – external information boards, illustrated toposcopes, sculptures, hub and orientation sites and waymarked walking trails.

Revitalising Redesdale partners are seeking to use large sculptural installations at places with a natural sense of power and resonance to encourage visitors to stop their journey and connect with the landscape and its natural and cultural heritage. The partners are particularly committed to developing an eye-catching installation near the source of the River Rede and at this key gateway into the valley.

The wild goat has been selected as the logo for Revitalising Redesdale. Whitelee NNR is the home of Northumberland's wild goats, and these can often be seen on the fells surrounding

Carter Bar. It was therefore felt that a goat would be the most appropriate sculpture for this site; this has subsequently been confirmed in more recent community consultations.

The partners include Natural England Northumberland National Park, Northumberland County Council, Northumberland Wildlife Trust, Forestry England, Environment Agency, MOD and Byrness with Rochester Parish Council (all the parishes within Redesdale are partners).

Other sites in the wider Revitalising Redesdale interpretation programme are covered in separate planning applications to Northumberland County Council and Northumberland National Park.

Proposed Works

Northumberland Wildlife Trust, on behalf of the Revitalising Redesdale Landscape Partnership, wish to upgrade and expand visitor information on their Whitelee Moor Reserve.

The proposed works are:

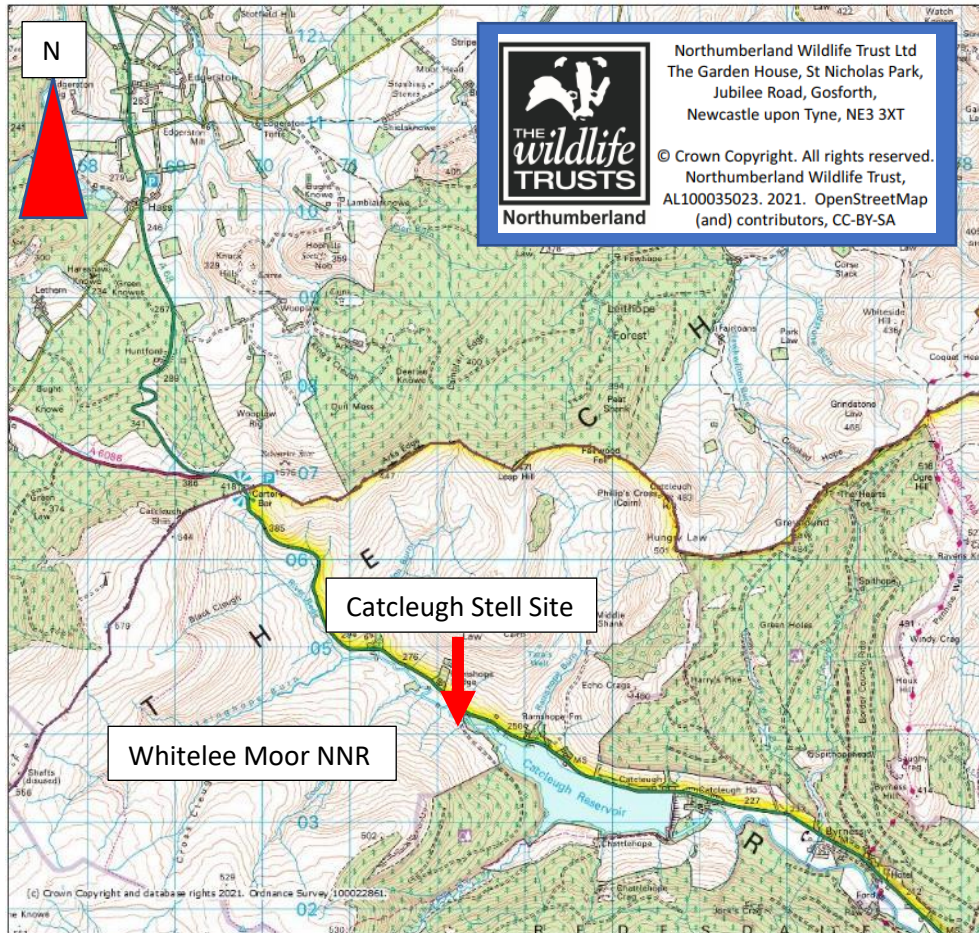
- Install two timber lecterns style information panels in the NWT reserve carpark / layby 200m along the private access road from the A68. The site is located to the SW of Catcleugh Reservoir nr the sheep stell.

2) Site Location

a) Whitelee NNR

Whitelee Moor National Nature Reserve (NNR) is an area of open moorland located at the head of Redesdale to the S of the A68. There are two main public access points onto the reserve. Carter Bar where a public footpath heads SW over the moor and at the N end of Catcleugh Reservoir where a private access road serves a small car parking area on the SW side of the Rede. The river itself rises about 400m SW of Carter bar near the Scottish Border. Works to improve visitor information is planned at both the Carter Bar and Catcleugh sites.

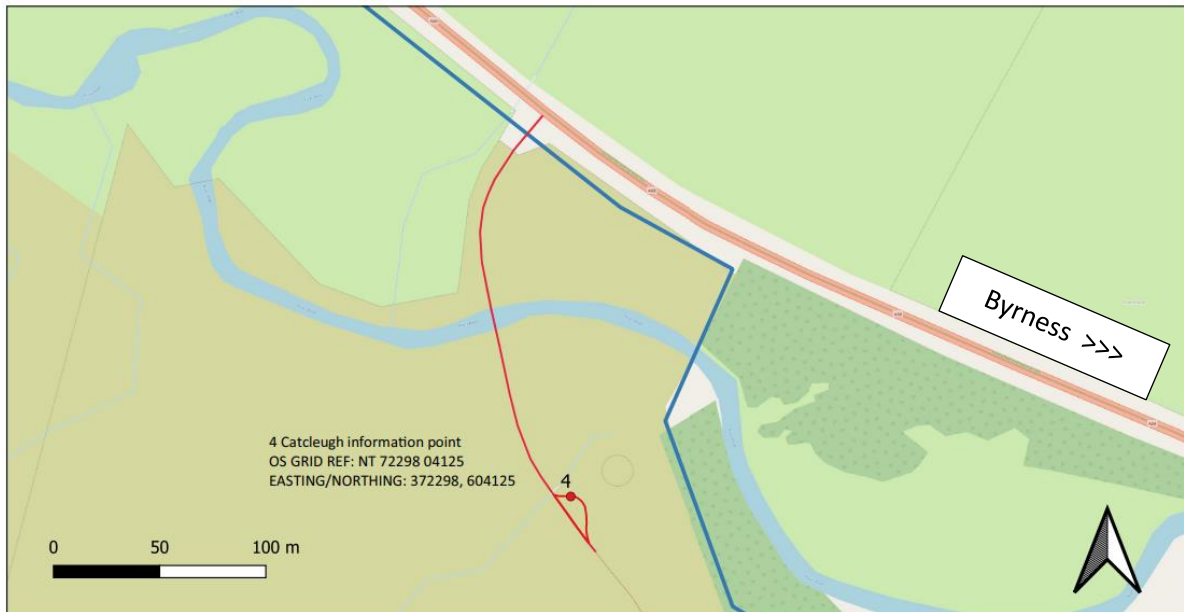
Map 1 – Site Location




b) Whitelee - Catcleugh Stell

The site is at the E end of the Whitelee NNR at the first car park lay-by (NT72310410) on the private road which leads from the A68 around the western end of Catcleugh Reservoir to Countess Wood. The panels will be erected in grassland on the edge of the layby opposite a sheep stell.

Map 2 – Location and Access – Catcleugh Stell



LEGEND <ul style="list-style-type: none"> ● 4 Catcleugh information point ▭ Access and working areas ▭ Landownership boundary Whitelee Moor NNR 	TITLE Site Plan - Catcleugh	SCALE 1:2000	 Northumberland Wildlife Trust Ltd The Garden House, St Nicholas Park, Jubilee Road, Gosforth, Newcastle upon Tyne, NE3 3XT © Crown Copyright. All rights reserved. Northumberland Wildlife Trust, AL100035023. 2021. OpenStreetMap (and) contributors, CC-BY-SA
	PROJECT Whitelee Moor Sculpture and Information Panels	DATE 11/10/2021	

3) Proposed works / features

The River Rede, which momentarily is engulfed by the reservoir, runs here through ancient blanket bogs which lay high up to the north and enjoy the protection of the Whitelee Nature Reserve. The conservation of these carbon catching bogs and the rare plants that thrive there is an ongoing conservation project. Further down the slopes these bogs run into heather moorland. This habitat is a draw for migrant birds like golden plover and dunlin who return here to breed. Merlin and peregrine soar above searching for prey whilst feral goats lurk, surprising visitors with occasional sightings.

Although it feels like this area was remote and inhospitable, if you read the lumps and bumps of the landscape a deeper past begins to emerge. Evidence of a Roman hillfort west of Catcleugh suggest a settlement that farmed the land, grazing livestock. Aerial photography shows drainage ditches and demarcated fields, walls and buildings. Above the south end of the reservoir a timeline of structural remnants shows people making this their home as far back as prehistoric bronze age. The evidence shows continued settlements through to medieval.

Siting Considerations - The panels are being placed on the existing carpark layby which is adjacent to the access road which is used by forestry vehicles (including large timber wagons), as well as visitors. The panels will therefore be placed well away from the road.

i) Natural Environment

The site is located on the boundary of following designations, important for blanket bog and heath habitat:

- Whitelee Moor National Nature Reserve,
- Keilderhead and Emblehope Moors SSSI
- Border Mires Kielder-Butterburn Special Area of Conservation

The panels will be erected close to the edge of a hardcore parking place and will not impact on any designated feature. The panels will interpret and explain the natural environment, historic environment and landscape for visitors to the reserve.

ii) Historic Environment

The site does not have any designations.

Lidar data was examined as part of the Revitalising Redesdale landscape through time project. This sought to identify new and unrecorded historic sites. None were identified within the proposed interpretation panel or the access routes. A new Romano British site was identified near by and on site interpretation will reflect this.

The sheep stall is not a listed structure the panels will be placed a short distance away from the structure to ensure that they do not detract from the setting of the structure.

iii) Recreation and Cultural landscape

The access track has permissive vehicle access for visitors to the reserve. Away from the track there is area access under the Countryside and Rights of Way Act (2000). The area is used for quite recreation – predominately walking or observing the plants and wildlife on the reserve. This part of the reserve does not experience large numbers of visitors.

iv) Hydrology

The site is on a freely draining constructed aggregate track. The works will not impound water or interfere with the general hydrology of the site.

4) Construction Method

1) Utilities and services

CAT Scan prior to excavations commencing. Hand excavation for interpretative panels.

2) Access for construction

Via the private access track from the reserve entrance located 1.7miles W of Catcleugh Reservoir dam. The layby where the 0.1miles along private access road from the A68.

3) Plant and equipment

Work will be by hand. Hand tools / wheel barrow.

4) Unloading and movement of materials

Materials will be located in the layby.

5) Preparation of site

Prior to work commencing the car park will be scraped clean of vegetation and a new top dressing of aggregate applied. These works form part of normal site maintenance and repair.

6) Construction

Lectern – Holes of 300mm x 300mm x 700 mm will be dug. The legs of the lectern placed in the holes and materials packed around it.

7) Managing public access

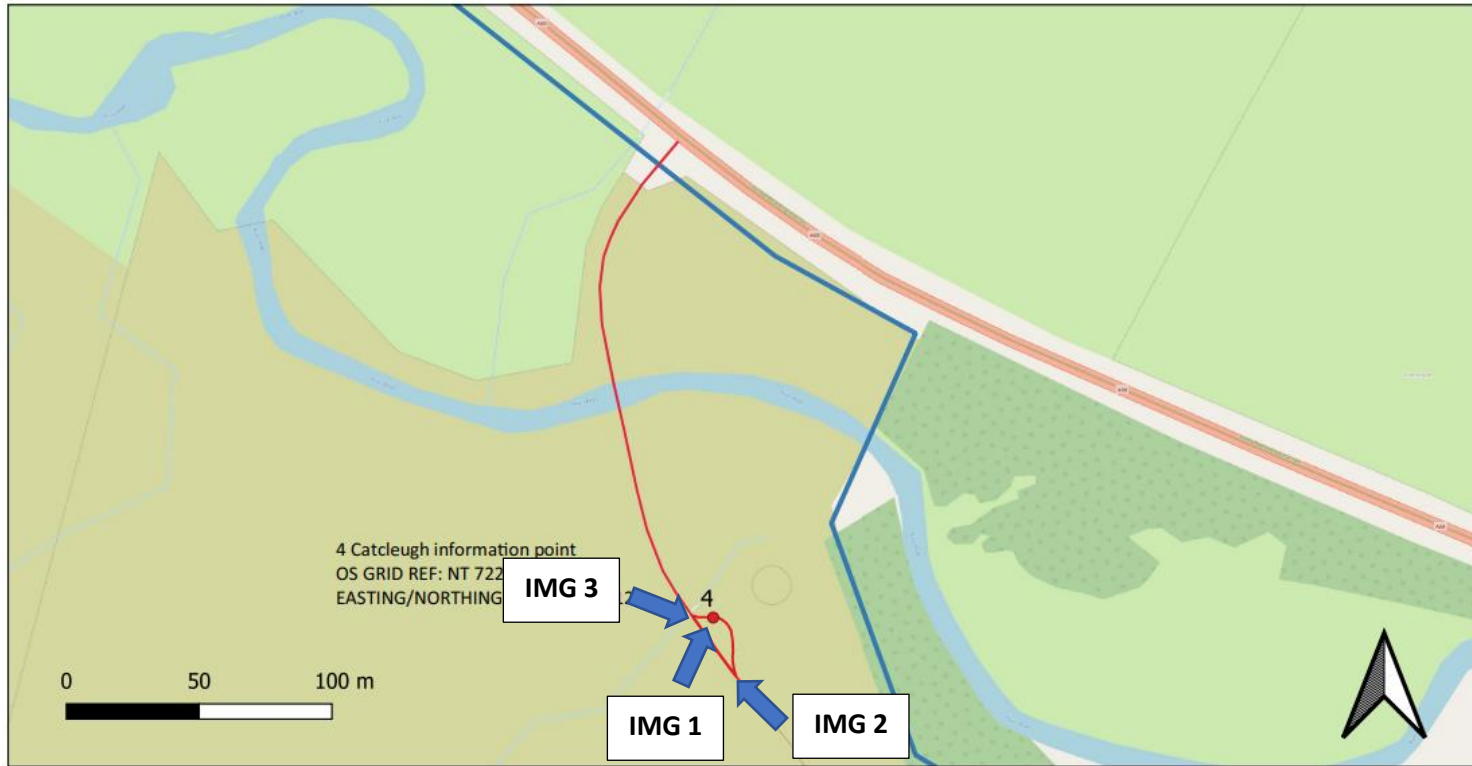
Works will be managed with banks men during the day. Un attended excavations will be barriered or fenced off. Warning signage will be placed at the entrances to the 0.55ha enclosure.


8) General site condition and management

- Works fall under CDM 2015
- Works will be delivered by a suitably skilled and experienced contractor(s) appointed by the NWT
- Contractors must produce RAMS for moving any Plant and Equipment onto site.
- It is essential that there is no waste of materials left at the Site; the Contractor will be expected to manage operations to minimise waste.
- Work site will be promptly returned to its original condition after the works have been completed.
- Site(s) and other areas occupied for the delivery of the works are to be maintained in a clean and tidy manner for the duration of their use.
- The Contractor is restricted to specified storage areas for the unloading, loading of materials, parking of vehicles, and storage of materials.

- The Works Site is unsecured with access to the public. Machines and tools may be left unattended or remain on the site(s) overnight at the Contractor's own risk, but only in locations to be agreed with by the Client.
- No fuel may be left unattended on the site(s) or be stored on the site(s) overnight.
- The Contractor(s) shall ensure that it has at all times on the Sites spill kits for fuel specified in its Method Statements and shall immediately use the same in the event of such spillage in accordance with manufacturer's instructions.
- Contract supervision – regular progress and compliance monitoring visits
- Turves – turves shall be retained and used for landscaping along the path line or the erosion scars
- No borrow pits can be created on Site.
- Sediment control – when working on or near water courses contractors will place sediment netting at end of work site when there is a risk from overland flow as a result of a storm event.
- Photographic condition recording of site and access route – pre and post works
- No stone may be taken from local walls or boundary features.

Photograph locations



LEGEND <ul style="list-style-type: none"> ● 4 Catcleugh information point ▭ Access and working areas ▭ Landownership boundary Whitelee Moor NNR 	TITLE Site Plan - Catcleugh	SCALE 1:2000	 <p>Northumberland Wildlife Trust Ltd The Garden House, St Nicholas Park, Jubilee Road, Gosforth, Newcastle upon Tyne, NE3 3XT</p> <p>© Crown Copyright. All rights reserved. Northumberland Wildlife Trust, AL100035023. 2021. OpenStreetMap (and) contributors, CC-BY-SA</p>
	PROJECT Whitelee Moor Sculpture and Information Panels	DATE 11/10/2021	

Img 1) View E – NE from the layby nr Catcleugh Stell (location not shown on map below)



IMG2) View N Whitelee, Catcleugh sheep stell access track. Lecterns located at tip of arrow.



IMG 3) View SE Whitelee, Catcleugh sheep stell access track. Lecterns located at tip of arrow

