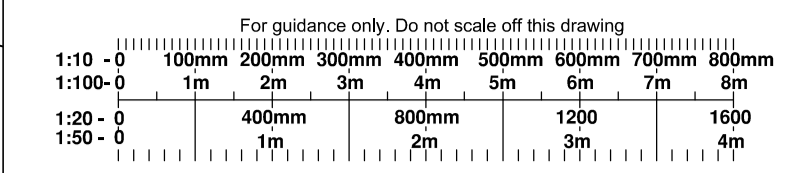
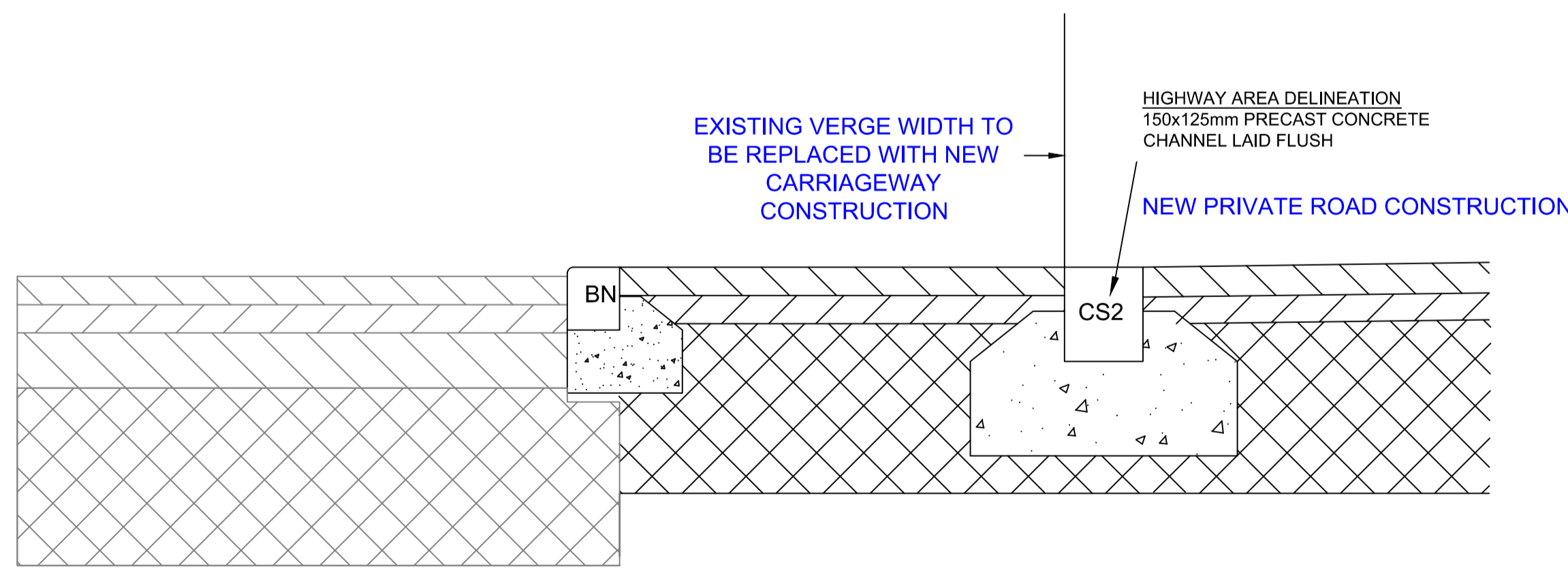
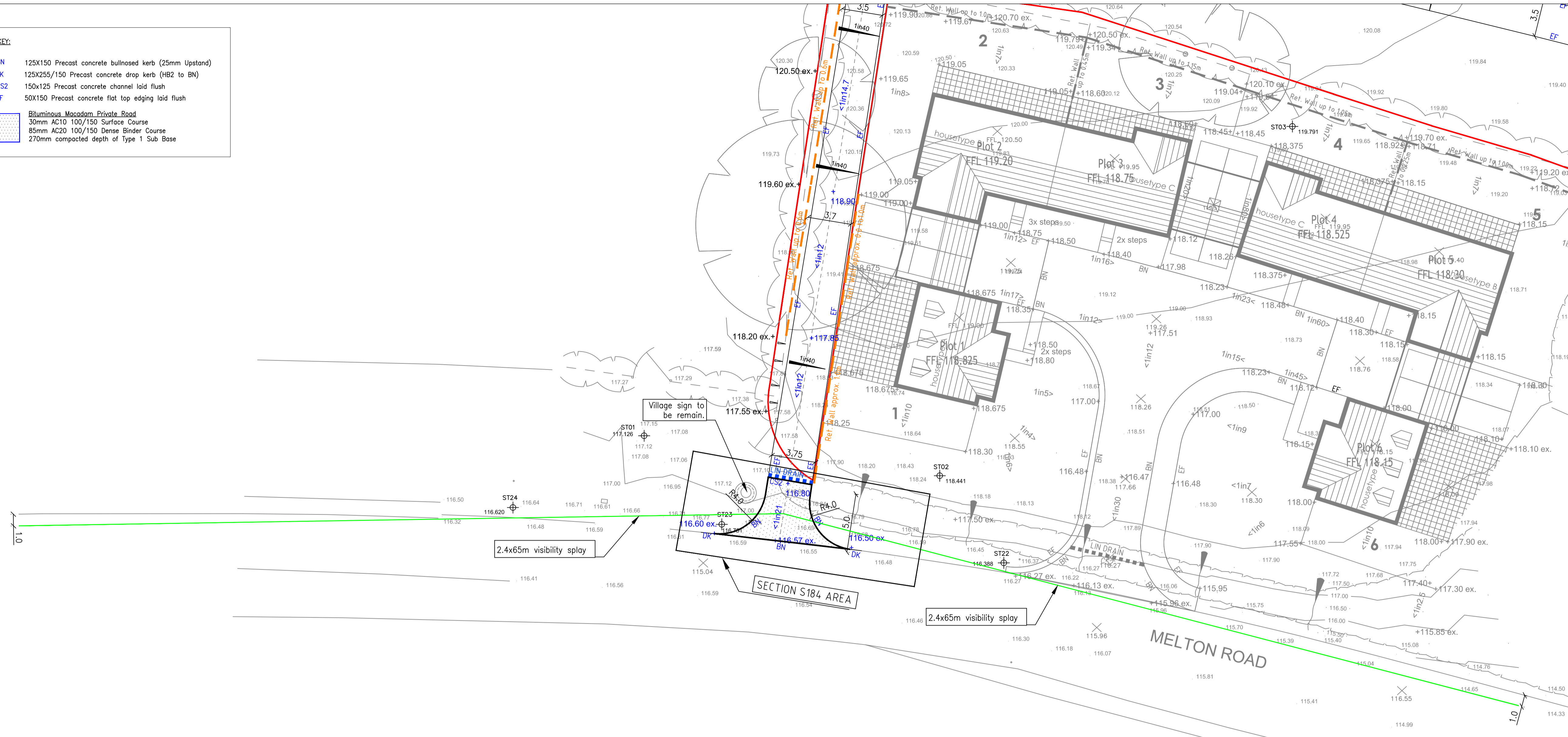


- KEY:**
- BN 125X150 Precast concrete bullnosed kerb (25mm Upstand)
 - DK 125X255/150 Precast concrete drop kerb (HB2 to BN)
 - CS2 150x125 Precast concrete channel laid flush
 - EF 50X150 Precast concrete flat top edging laid flush
 - Bituminous Macadam Private Road
 - 30mm AC10 100/150 Surface Course
 - 85mm AC20 100/150 Dense Binder Course
 - 270mm compacted depth of Type 1 Sub Base

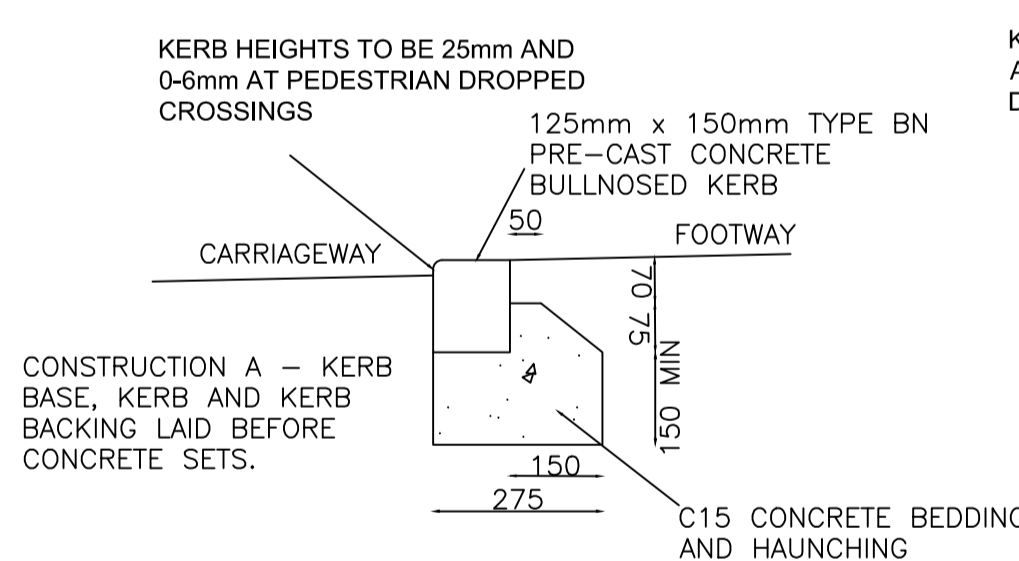
Notes:-



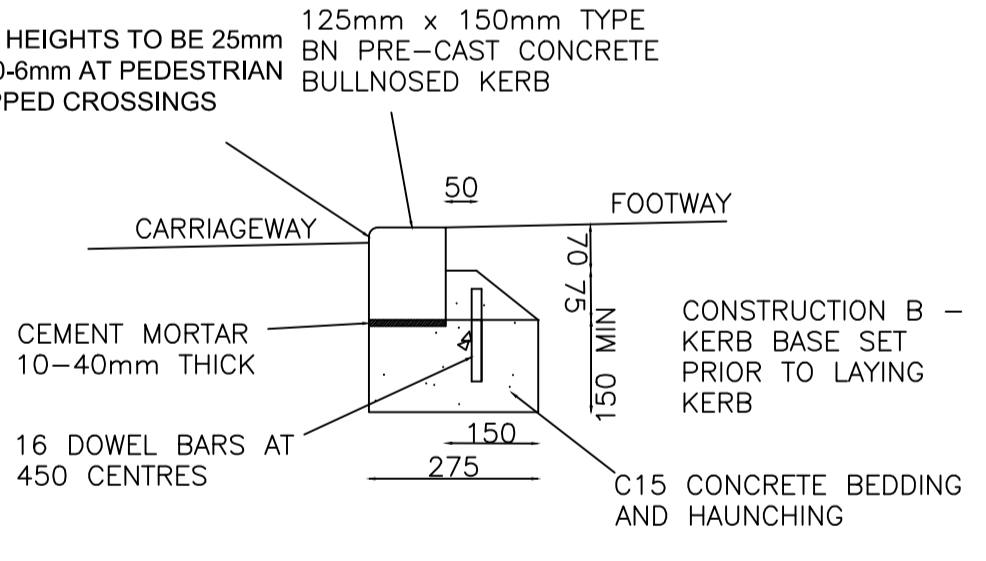
- GENERAL**
- Site boundary
 - +116.13 Proposed external levels
 - FFL 118.50 Building finished floor levels
 - Ret. Wall/0.2m Retaining Structures
 - <1in30 Direction of gradient fall
 - LIN DRAIN Linear drainage
 - BN 125X150 Precast concrete bullnosed kerb (25mm Upstand)
 - EF 50X150 Precast concrete flat top edging laid flush
 - CS2 150x125 Precast concrete channel laid flush



TIE-IN BETWEEN NEW AND EXISTING CARRIAGEWAY DETAIL

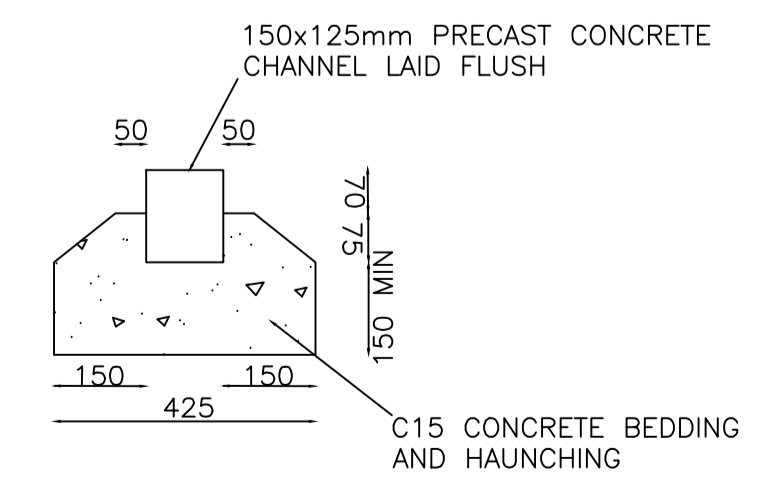


TYPICAL BULLNOSED KERB (BN) DETAIL CONSTRUCTION A



TYPICAL BULLNOSED KERB (BN) DETAIL CONSTRUCTION B

NOTE: If Construction 'A' is used and kerbs require changing following development completion, the kerb base is to be scabbled to a depth of 20mm to allow for new cement mortar bed.



TYPICAL CONCRETE CHANNEL (CS2) DETAIL

B	21.06.21	Access radii amended, village sign to remain	KK
A	30.09.20	First Issue	KK
REV.	DATE	AMENDMENT	BY

SIRINA PROJECTS LTD

PROJECT
BARN CONVERSION AND EXTENSION, SCALFORD

DRAWING TITLE
S184 Access Layout and Construction Details

SCALE 1:200 SHEET SIZE A1

MICHAEL EVANS & ASSOCIATES LTD.
Consulting Civil & Structural Engineers

34 Station Road, Draycott, Derbyshire DE72 3QB
Tel. 01332 871840 Fax. 01332 871841

DRAWN	KK	DRAWING NO.	Rev.
DATE	September 2020	20-187-002	B