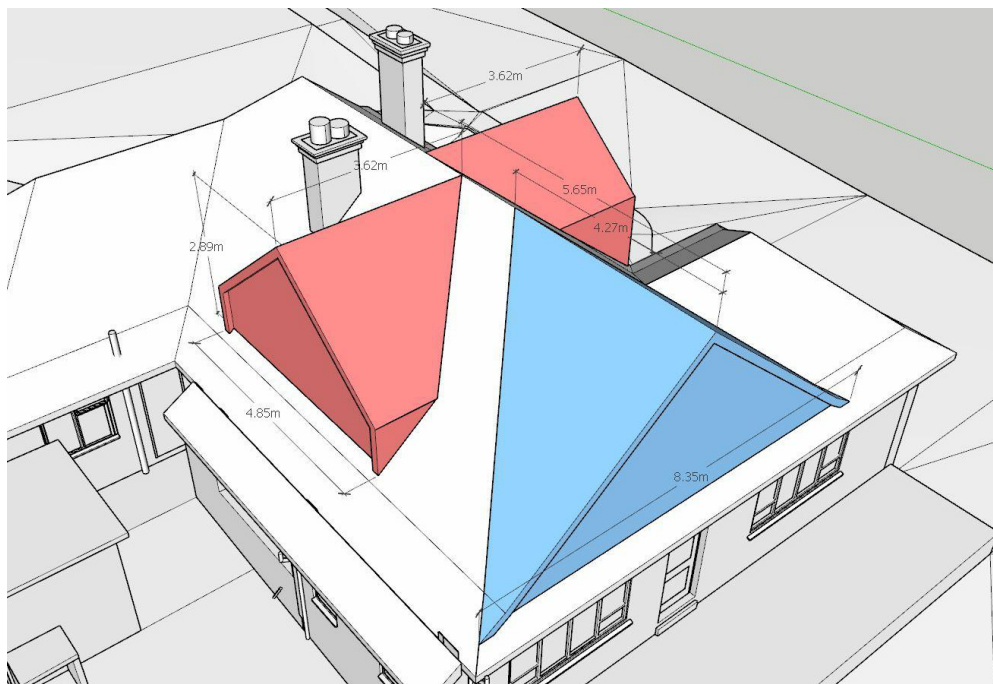


Volume Calculations

© This drawing is the property of Bluetime Retail Ltd who retain the sole copyright of its contents & it may not be reproduced in part or in whole without written permission



Proposed Additional Roof Volume

Solid Group (1 in model)

Layer: Layer0

Instance: Hip to Gable

Type: Type: <undefined>

Volume: 19.53 m³

Toggles:

Solid Group (1 in model)

Layer: Layer0

Instance: Pitched Dormer 1

Type: Type: <undefined>

Volume: 11.61 m³

Toggles:

Solid Group (1 in model)

Layer: Layer0


Instance: Pitched Dormer 2

Type: Type: <undefined>

Volume: 10.42 m³

Toggles:

Allowable Volume - 50 Cubic Metres
Total Extra Volume - 41.56 Cubic Metres

Amendments			
Rev :	Init. :	Date :	Description :
Project :			
Innisfree, Fairby Lane Hartley. DA3 8DA			
Title :			
Certificate of Lawful Development Drawings Volume Calculations			
Bluelime Retail Ltd / Bluelime Home Design LLP. Design, Project Management, Build			
Thames Innovation Center, Veridion Way, Veridion Park, Erith, Kent DA18 4AL		Tel: 01322 521026	
Proposed ground floor extensions and hip to gable loft conversion with dormers			
Drawn by :	Scale :	@ A4	Date :
M.J.G			16/12/2021
Drawing number :			Rev :
BL/DRG/2112.80/ 07			
Do not scale from this drawing. Dimensions to be checked on site.			