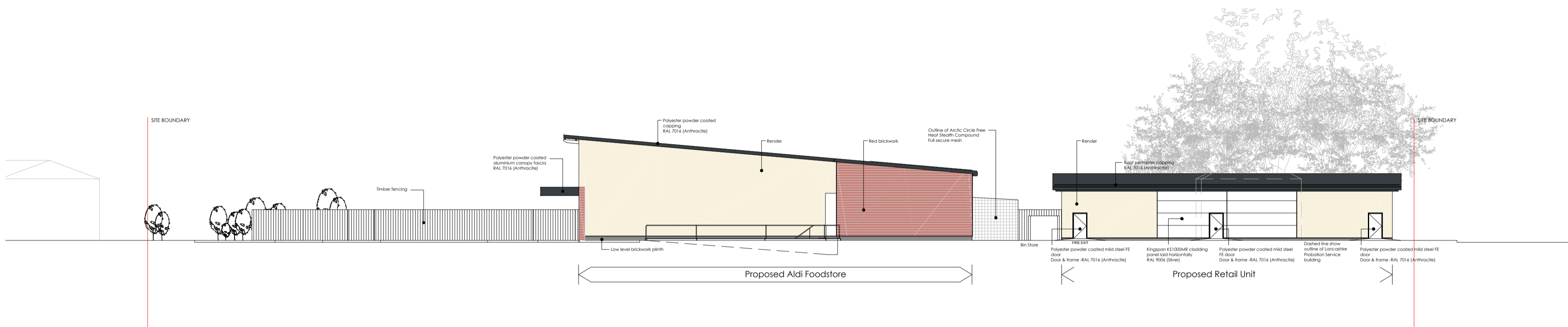
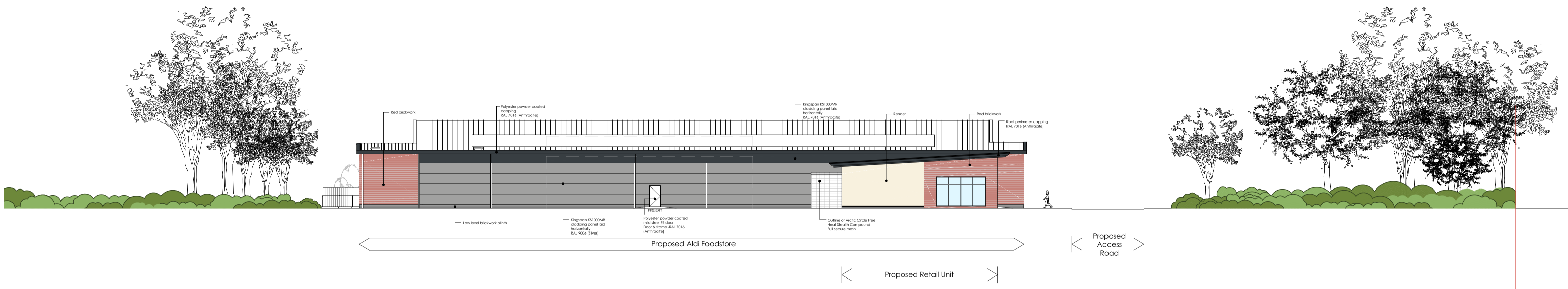


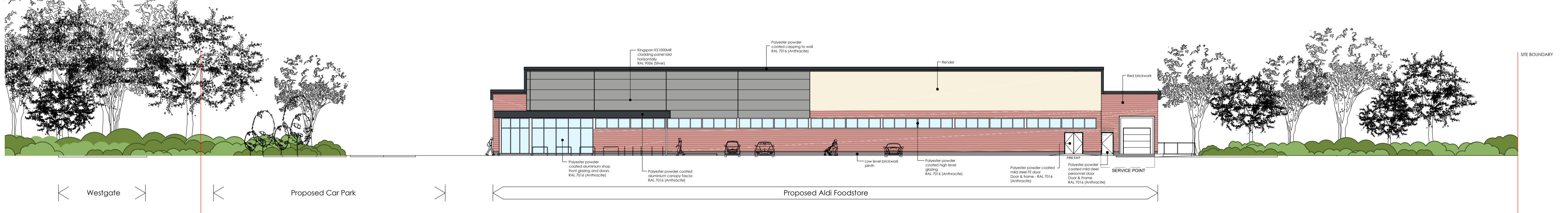
ELEVATION A



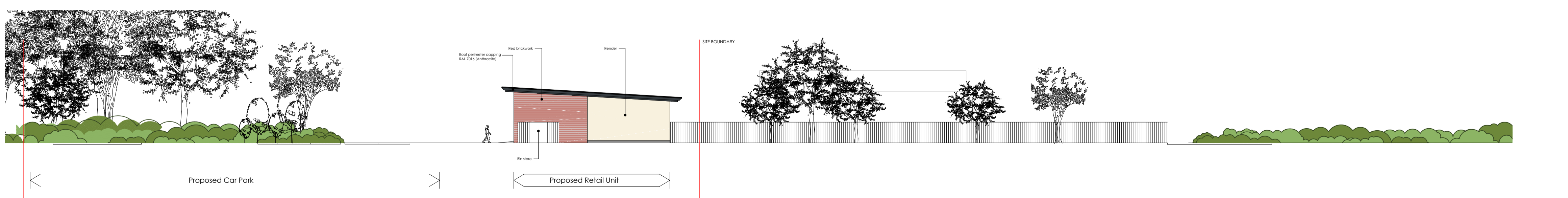
ELEVATION B



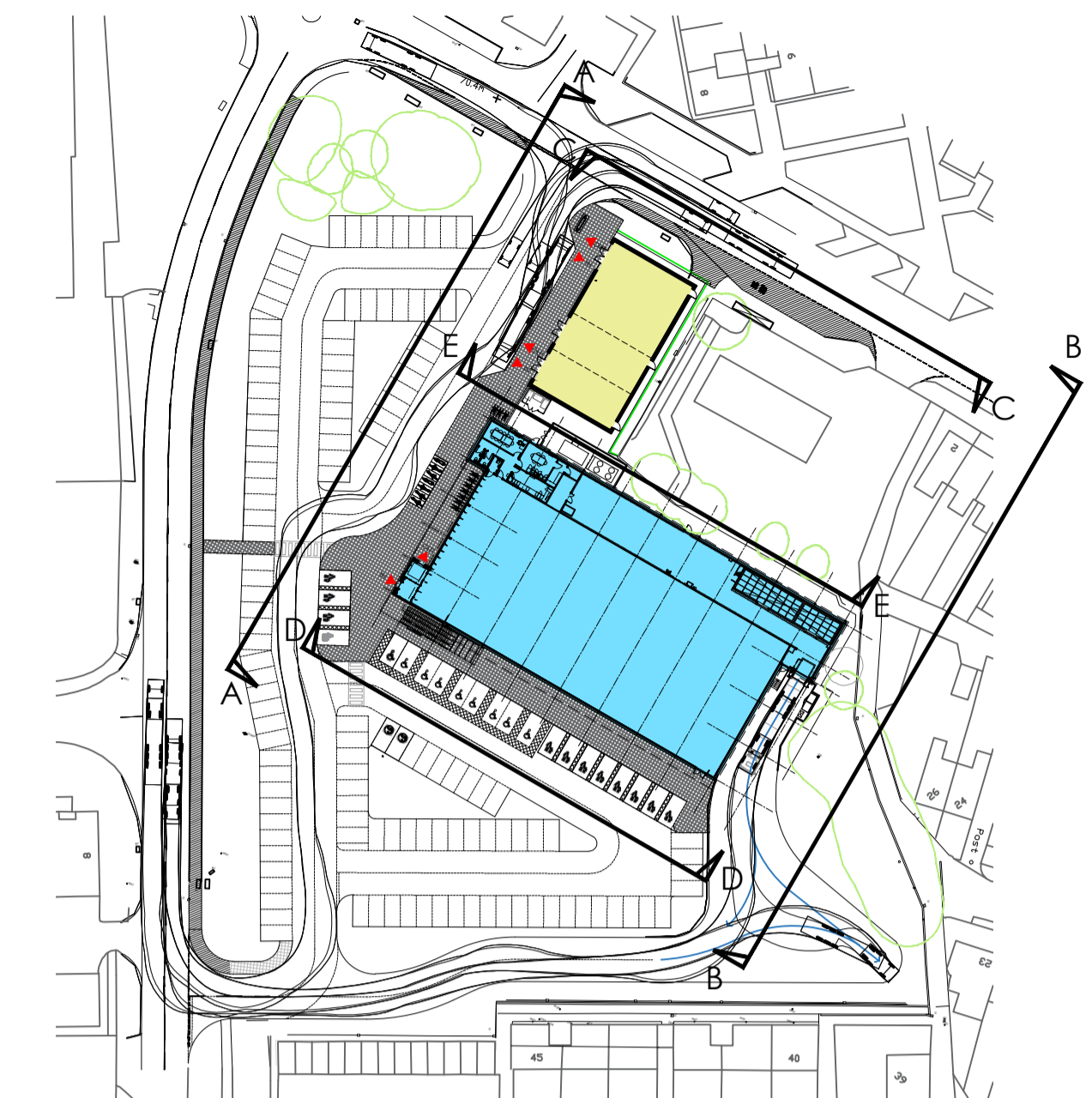
ELEVATION C



ELEVATION D



ELEVATION E



KEY PLAN (NOT TO SCALE)

PROPOSED ELEVATIONS
SCALE 1:200 @ A1

CAD file reference: J:\ALDI\MIDDLETON\2269BOL\17.0 DRAWINGS\100 SERIES

Rev	Date	Description	Rev By	Chkd By
C	28.01.20	External lobby included to Unit A	CM	LEEB
B	23.04.19	Site boundary updated as per site plan	CM	LEEB
A	06.12.18	Key plan updated as per latest site plan	CM	LEEB

Project Title: PROPOSED ALDI FOODSTORE
WESTGATE SKELMERSDALE WN8 8AP

Client: ALDI STORES LTD

Status: PLANNING

Scale: 1:200 Drawing Size: A1

Date: 06.08.18 Drawn By: RG Checked: LEEB

Drawing Title: PROPOSED ELEVATIONS

Job/Dwg No: 2269-114 Rev: C

23, Johns North, Wakefield, WF1 3QA
t. 01924 291800

Carvers Warehouse, 77 Dale Street, Manchester, M1 2HG
t. 0161 2388555

The Old Rectory, 79 High Street, Newport Pagnell, MK16 8AB
t. 01908 211577

101 London Road, Reading, RG1 5BY
t. 0118 9507700

10 Gees Court, 51 Christophers Place, London, W13 1JJ
t. 0207 4091215

THE HARRIS PARTNERSHIP ARCHITECTS
www.harrispartnership.com

This drawing is copyright and may not be reproduced in whole or part without written authority. Do not scale off this drawing.