

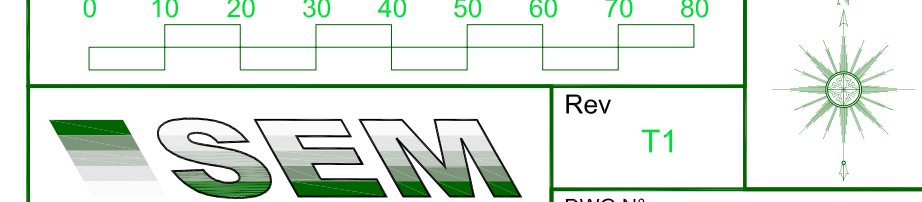
| LUMINAIRE SCHEDULE                      |       |     |                    |   |                      |
|---|-------|-----|--------------------|---|----------------------|
| Symbol                                  | Label | Qty | Catalog Number     | Description   | Lamp                 |
|   | A     | 1   | FTS.L094.AY + BLS  | FACTOR SMALL WITH BLS @ 6 MTRS                            | 4000K LED WITH 70CRI |
|   | B     | 3   | FTS.2.LA064.AY BLS | FACTOR SMALL c/w AY Asymmetric Optic on 6m Column c/w BLS | 4000K LED WITH 70CRI |
|   | F     | 15  | FTS1.L094.FW       | FACTOR SMALL STREETLIGHT @ 6 MTRS                         | NICHIA 219 4000K     |
|   | G     | 3   | DEW.LM034.PGL      | DENVER WALL ELITE   | LED C.3000LM - 4000K |
| --- 100mm DUCTS FOR POWER               |       |     |                    |   |                      |
| - - - 100mm DUCTS FOR EXTERNAL LIGHTING |       |     |                    |   |                      |

| STATISTICS               |        |        |        |       |         |
|--------------------------|--------|--------|--------|-------|---------|
| Description              | Symbol | Avg    | Max    | Min   | Min/Avg |
| Carpark Area             | +      | 20 lux | 44 lux | 8 lux | 0.40    |
| Loading / Unloading Area | +      | 28 lux | 58 lux | 9 lux | 0.32    |
| Overspill                | +      | 1 lux  | 10 lux | 0 lux | 0.00    |
| Service Access           | +      | 21 lux | 72 lux | 6 lux | 0.29    |

**NOTES**

ALL EXTERNAL LIGHTING TO BE AUTOMATICALLY CONTROLLED FOR PREVENTION OF OPERATION DURING DAYLIGHT HOURS (LUX METER AND TIMECLOCK) AND SHALL HAVE AN AVERAGE LUMINOUS EFFICACY OF >60LM/S/CW

|     |              |          |         |
|-----|--------------|----------|---------|
| T1  | TENDER ISSUE | 14/03/19 | J.P.    |
| REV | DESCRIPTION  | DATE     | CHK/APP |



SEM Technology Limited  
 HQ  
 Clippers Quay  
 Salford Quays  
 M50 3XP  
 Tel: 0161 813 2560  
 Email: info@semtechnology.co.uk

|        |             |
|--------|-------------|
| Rev    | T1          |
| DWG N° | SEM1144/E06 |
| Issue  | TENDER      |
| Scale  | 1:300@A1    |
| Date   | MAR 19      |

**ALDI FOODSTORES  
 WESTGATE  
 SKELMERSDALE**  
 PROPOSED CAR PARK  
 LUX LEVELS



© THIS DRAWING IS THE COPYRIGHT OF SEM TECHNOLOGY LTD.  
 It shall not be in any way used or reproduced without their prior written consent.  
 All dimensions are to be checked on site prior to commencing work. Work only to figured dimensions.  
 All dimensions are in millimeters unless stated otherwise.  
 Any discrepancies are to be reported to the Services Engineer.