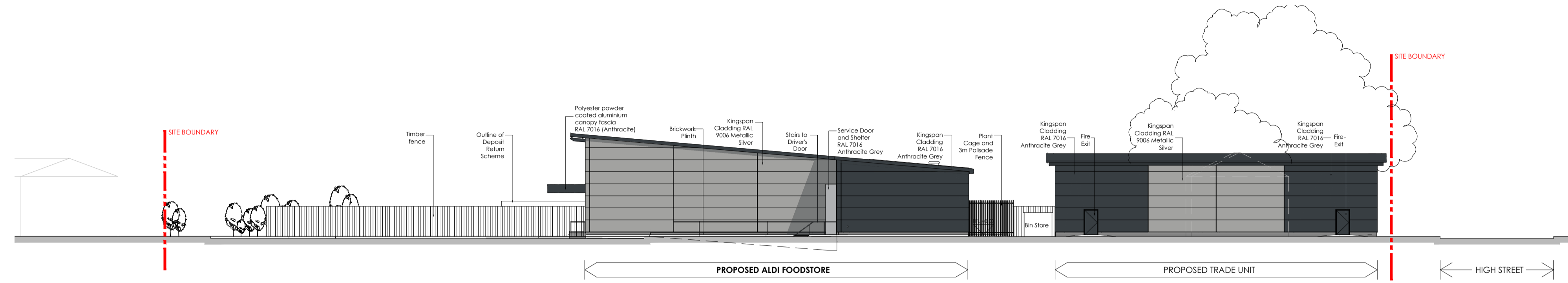
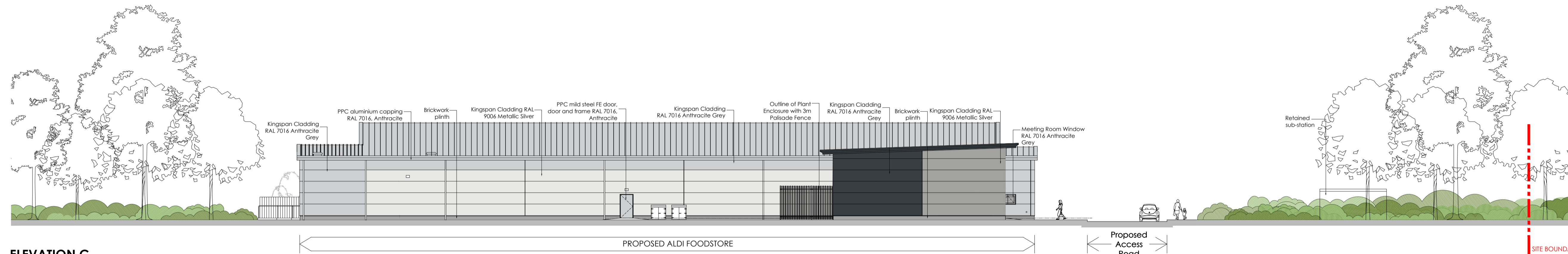


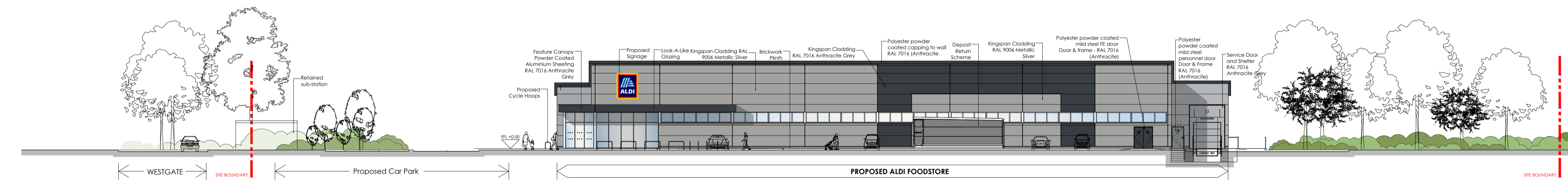
**ELEVATION A**  
Scale 1:200



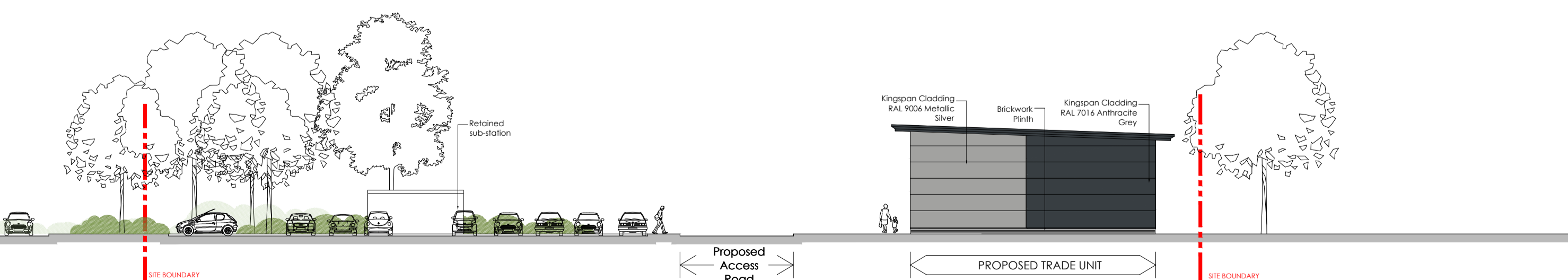
**ELEVATION B**  
Scale 1:200



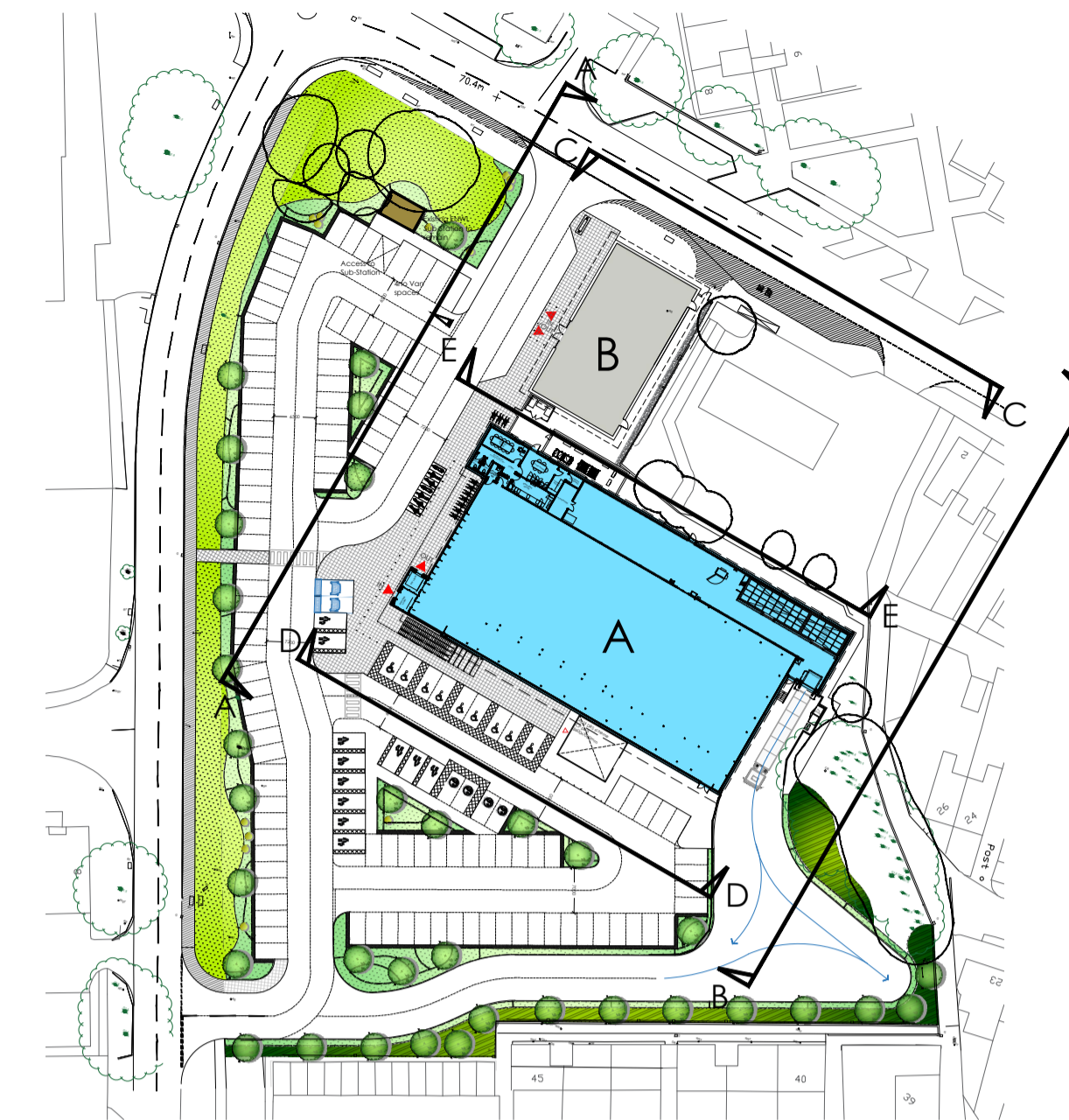
**ELEVATION C**  
Scale 1:200



**ELEVATION D**  
Scale 1:200



**ELEVATION E**  
Scale 1:200



**KEY PLAN**  
Not to Scale

Rev	Date	Description	Rev By	Chk'd By
E	02.12.21	Elevations reverted back to original format	CM	LEEB
D	22.07.21	Updated to new format	KJ	LEEB
C	29.01.20	External lobby included to Unit A	CM	LEEB
B	20.04.19	Site boundary updated as per site plan	CM	LEEB
A	04.12.18	Key plan updated as per latest site plan	CM	LEEB

Project Title	PROPOSED ALDI FOODSTORE	
	WESTGATE SKELMERSDALE WN8 8AP	
Client	ALDI STORES LTD	
Status	PLANNING	
Scale	1:200	Drawing Size A1
Date	06.08.18	Drawn By RG Checked LEEB
Drawing Title	PROPOSED ELEVATIONS	
Job-Dwg No	2269BOL - 114	Rev E

- 2 St. Johns North, Watlington, WPT 3QA t. 01924 291800
- Carvers Warehouse, 77 Dale Street, Manchester, M1 2HG t. 0161 2388555
- The Old Rectory, 79 High Street, Newport Pagnell, MK16 8AB t. 01908 211577
- 101 London Road, Reading, RG1 3BF t. 0118 9507700
- 10 Gees Court, St Christophers Place, London, W1U 1JJ t. 0207 4071215

