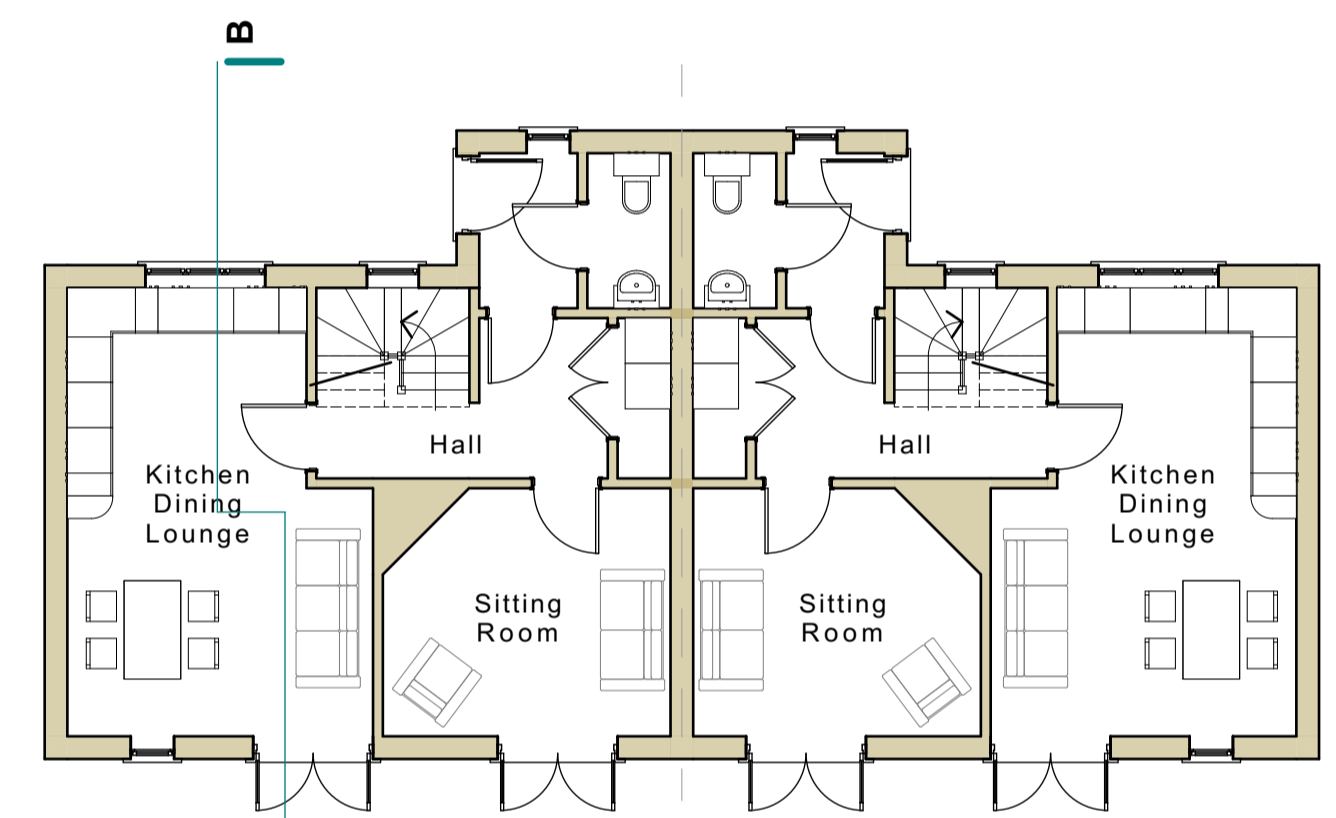
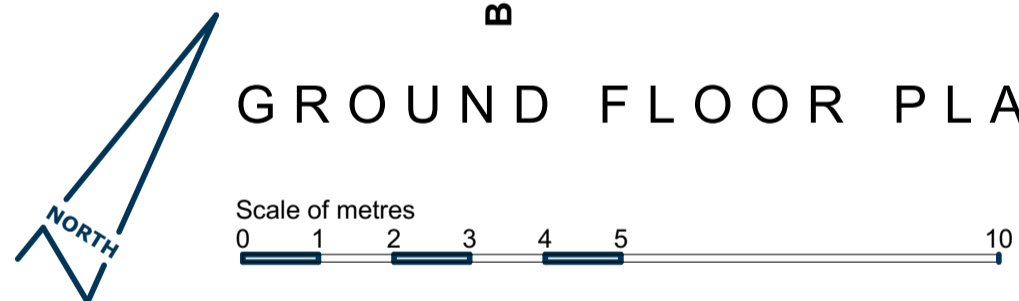


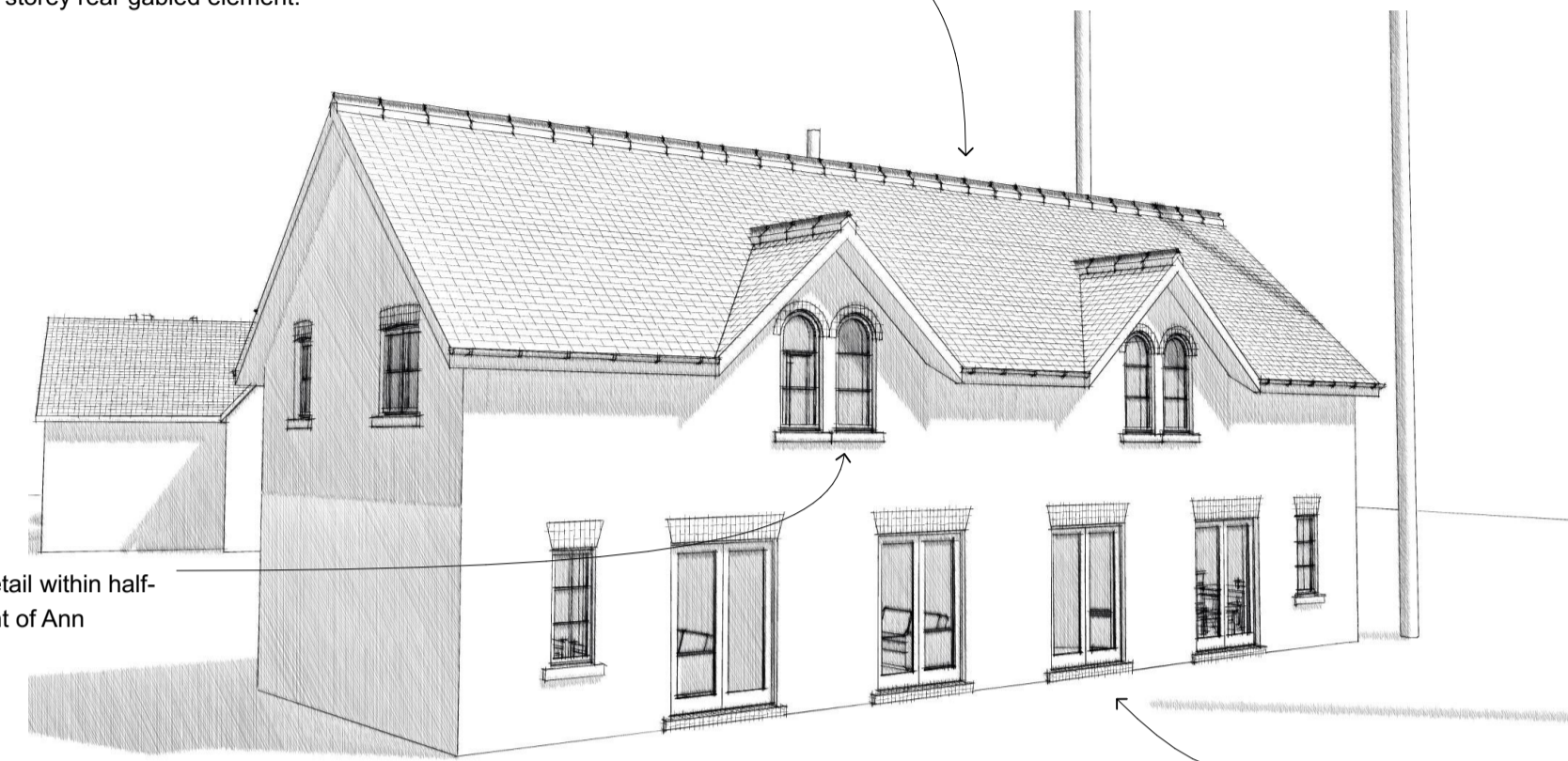
FIRST FLOOR PLAN



GROUND FLOOR PLAN



Overall scale and form takes precedent from the Ann Watson Cottages opposite to include gabled half-dormers and two storey rear gabled element.



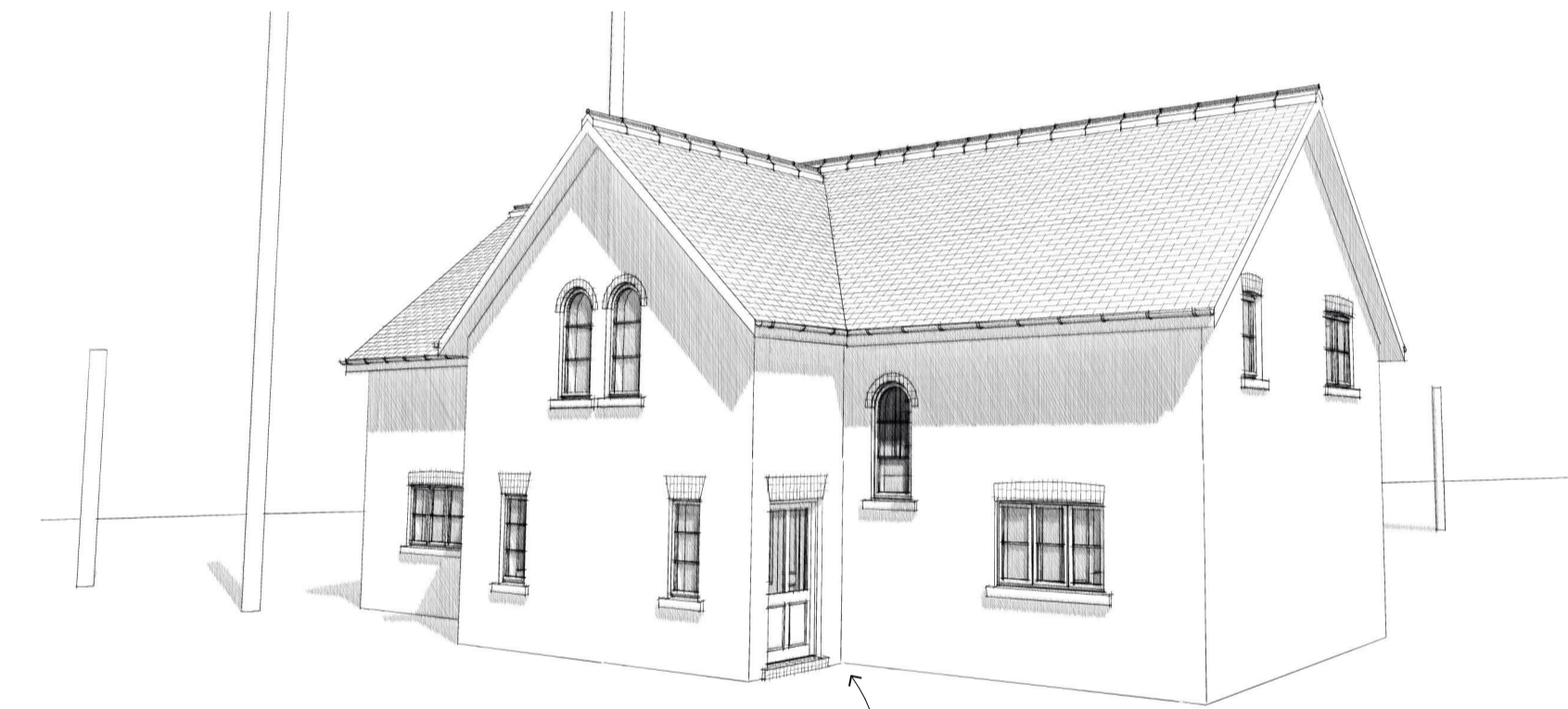
Paired arch-head window detail within half-dormer taken from precedent of Ann Watson Cottages opposite.

The 'garden frontage' includes French doors in place of casement windows at ground floor to connect the living spaces with the Garden.

PERSPECTIVE TO GARDENS

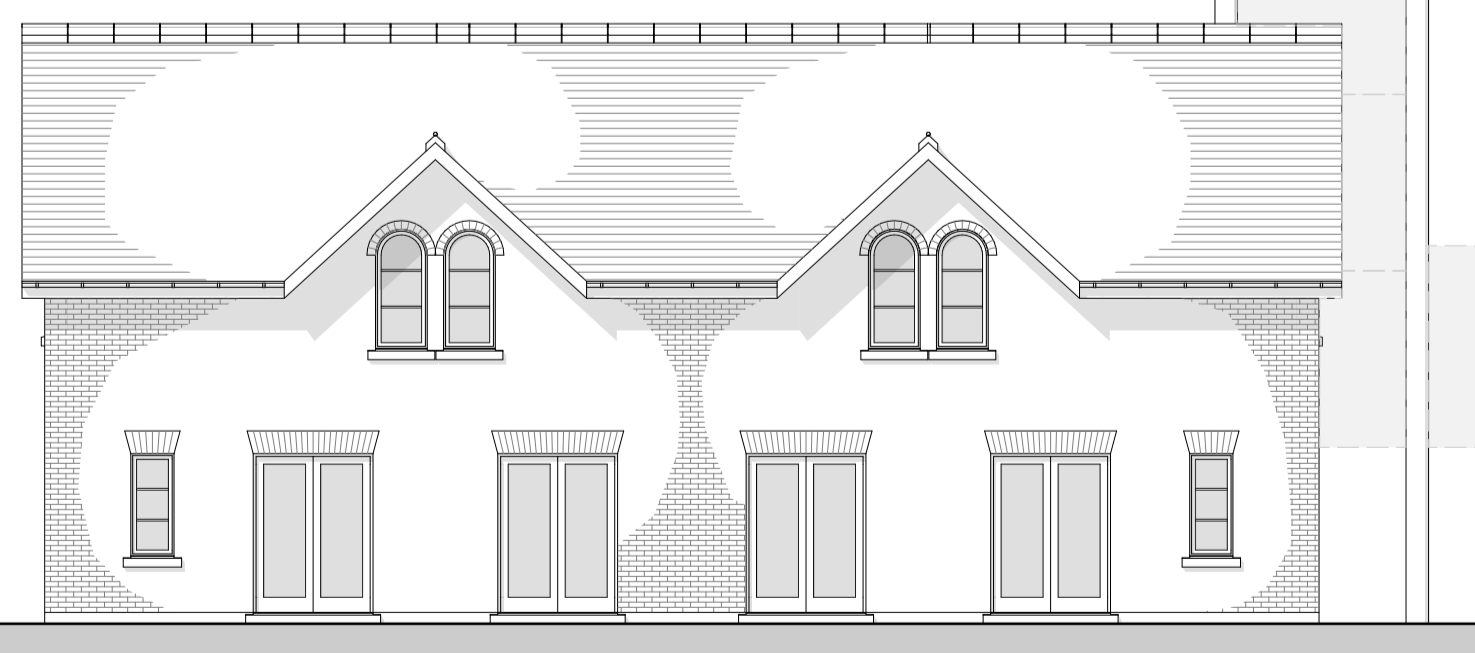


SECTION B



The Entrance frontage is subservient in detail to the garden frontage but includes arched window details to add prominence to the two storey rear gable and the stair. Service accommodation is located to this north side.

ENTRANCE PERSPECTIVE



SOUTH-EAST ELEVATION



NE ELEVATION



NORTH-WEST ELEVATION



SW ELEVATION

MATERIALS

Roof:
 - Spanish blue-black slate with angular blue clay ridge tiles on mortar bed.
 - Plastic fascia, soffit and bargeboards. Half-round Brett Martin Cascade rainwater goods on fascia brackets.

Walls:
 - Terca Topaz multi stock facing brickwork laid half-lap stretcher bond.
 - Brick voussoir heads to principal openings, segmental arch heads elsewhere, all in same facing brick as general walling.
 - Artstone sills.

Windows and doors:
 - Jade Windows Spectus Elite 70 uPVC casement windows in cream with double glazing.
 - Composite panelled doors with double glazing.

rev. E (05.01.22) Northpoint and scalebar added.
 rev. D (08.12.21) Chimney stacks omitted.
 rev. C (18.01.21) Typical Section B added.
 rev. B (09.10.20) Strike netting revised.
 rev. A (18.06.20) Materials note corrected.



Project
 Community and residential development
 Project Address
 The Former School and Humbleton Cricket Club
 Client
 Structeco
 Drawing Title
Proposed Cottages

Drawing Date April 2020 Drawing Scale 1:100 at A1

Walker Graham Architects

3 New Street York YO1 8RA T: 01904 848 868
 44 South Bar Street Banbury OX16 9AB T: 01295 709 247

Project Stage
Planning
 Drawing No.

Project No.

WG751 15 E