

## **Materials Schedule**

**for submission in relation to condition 3  
of  
Planning Approval ref: 204553FUL**

***For site at 29-39 Stirling Road, Acton, W3 8DJ only***

**Prepared for: Vision Construct**

**11.01.22**

## Main facing brick on facade



**Product:** *Crest - Cortes sample*

## Secondary facing brick on facade



**Product:** *Crest - Salt Glazed Red sample*

## External Doors & Windows - From Futura+

Range by Idealcombi - <https://products.idealcombi.com/en/>



### Product: Sliding Door - Futura+

Material: Aluminium/Timber Composite

Colour: Anthracite Grey RAL: 7016



### Product: Standard Opening Door - Frame IC

Material: Aluminium/Timber Composite

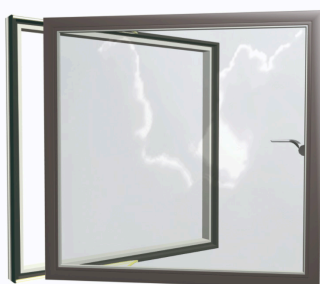
Colour: Anthracite Grey RAL: 7016



### Product: Fixed light window - Futura+

Material: Aluminium/Timber Composite

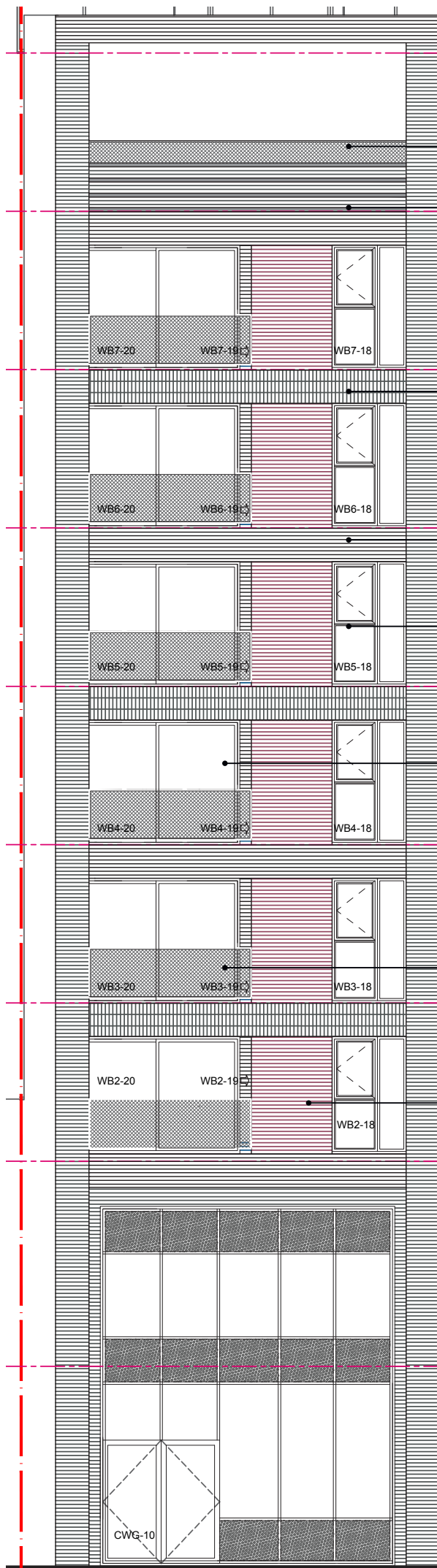
Colour: Anthracite Grey RAL: 7016



### Product: Side guided window - Futura+

Material: Aluminium/Timber Composite

Colour: Anthracite Grey RAL: 7016



⑥

### **Metal Balustrade**

*As per ⑥ below*

①

### **Corduroy Pattern Brick**

*Material: Facing Brick, Crest - Cortes*

②

### **Soldier brick**

*Material: Facing Brick, Crest - Cortes*

③

### **Traditional brick facework**

*Material: Facing Brick, Crest - Cortes*

④

### **Glazing**

*Material: Futura+ Aluminium/Timber Composite*

*Colour: Anthracite Grey RAL: 7016*

⑤

### **Sliding door**

*Material: Futura+ Aluminium/Timber Composite*

*Colour: Anthracite Grey RAL: 7016*

⑥

### **Balustrading**

*Material: Painted Mild Steel -*

*Anthracite Grey RAL: 7016*

⑦

### **Secondary Brick**

*Material: Facing Brick Crest - Salt Glazed Red*