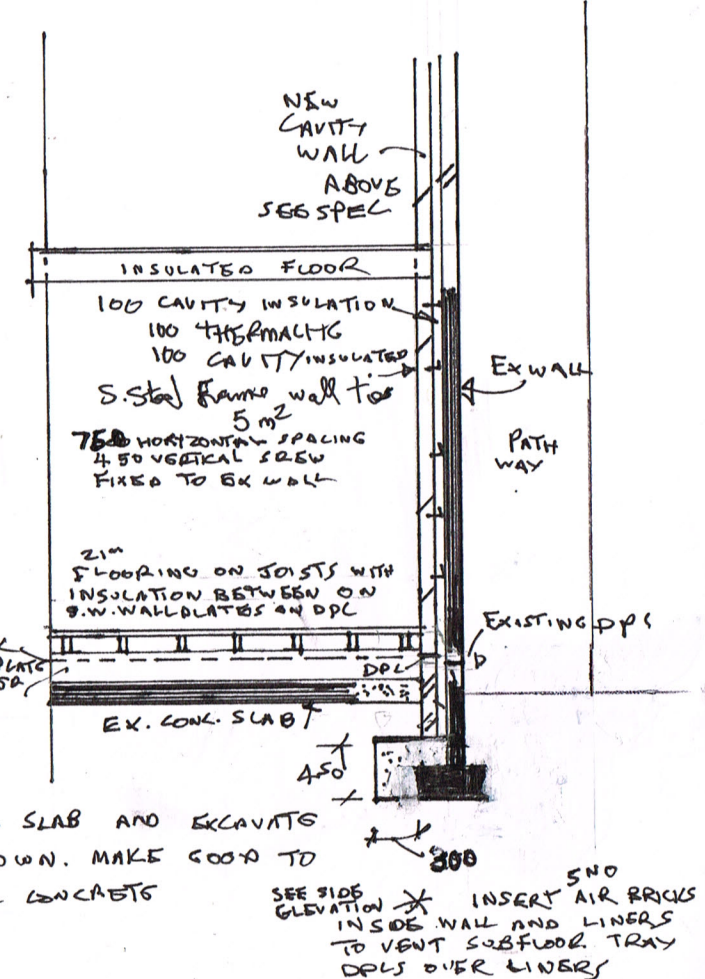
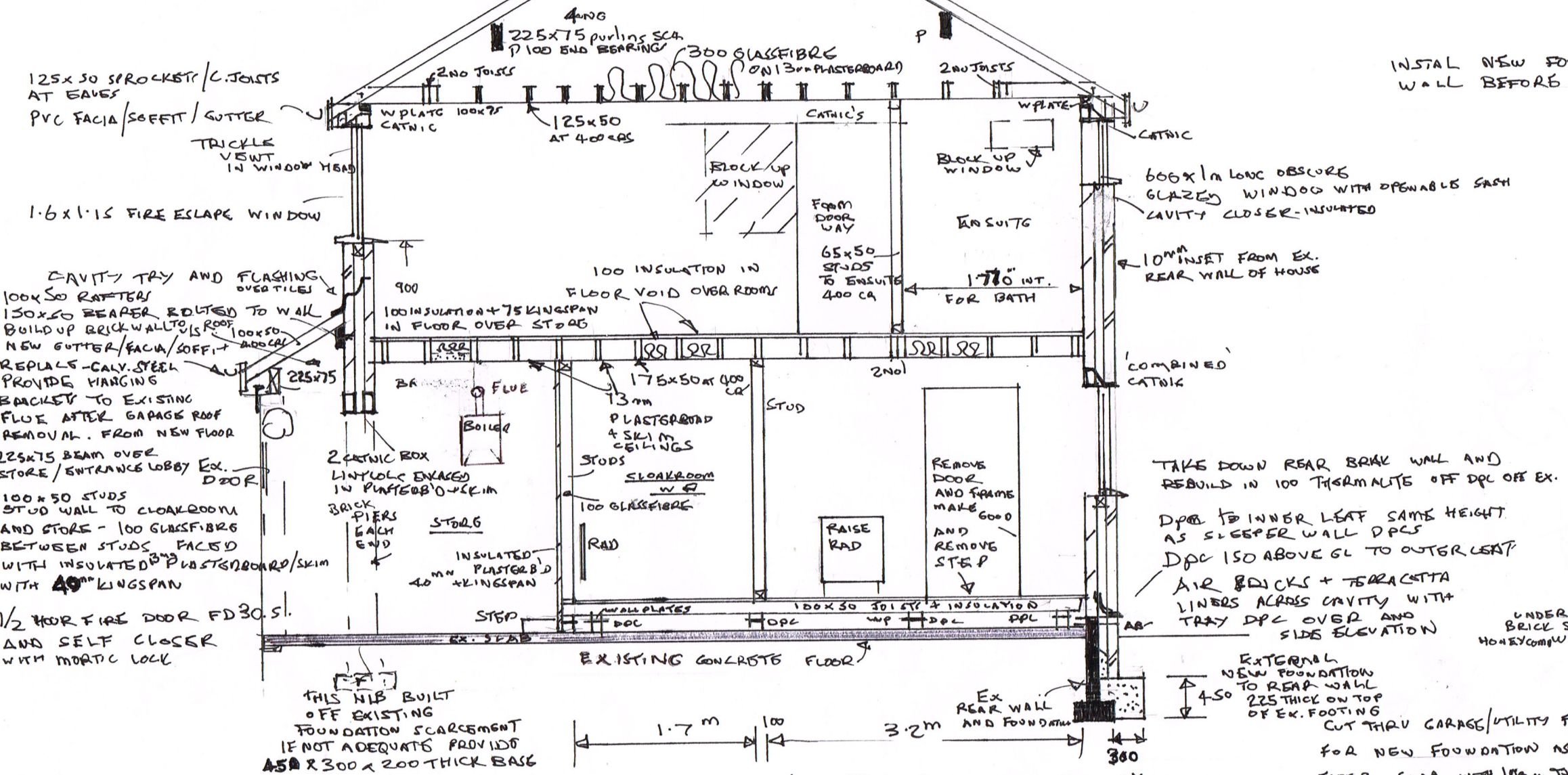


SECTION 1:50
9 MIDDLEHAM ROAD DURHAM

MARLEY MENDIP TILES ON 50x25 BATTENS ON TYVEK BREATHABLE MEMBRANE ON 100x50 RAFTERS AT 400 CRS. ON PURLINS



UTILITY FLOOR TO BE LEVEL WITH KITCHEN FLOOR

CUT THRU GARAGE/UTILITY FLOOR SLAB AND EXCAVATE FOR NEW FOUNDATION AS SHOWN. MAKE GOOD TO FLOOR SLAB WITH 100mm THICK CONCRETE ON COMPACTED hardcore