

140 West George Street, Glasgow – 12/05/19



Fig 1: Front elevation from ground



Fig 2 : Balustrade course at roof level



Fig 3: Balustrade course at roof level



Fig 4: Balustrade course at roof level



Fig 5: Balustrade course at roof level



Fig 6: 2nd Floor level



Fig 7: 1st floor level



Fig 8: 1st floor level



Fig 9: 1st Floor level



Fig 10: Ground floor level.



Fig 11: 3rd Floor level



Fig 12: 3rd floor level



Fig 13: 2nd Floor level



Fig 14: 2nd floor level



Fig 15: 2nd Floor level



Fig 16: Ground floor portico



Fig 17: Ground floor



Fig 18: Basement level



Fig 19: Basement level



Fig 20: Basement level



Fig 21: Basement level



Fig 22: Basement level



Fig 23: Basement level



Fig 24: Basement level



Fig 25: Basement level



Fig 26: Basement level



Fig 27: Underside of entrance steps



Fig 28: Underside of entrance steps



Fig 29: Underside of entrance steps



Fig 30: Basement level



Fig 31: Entrance steps

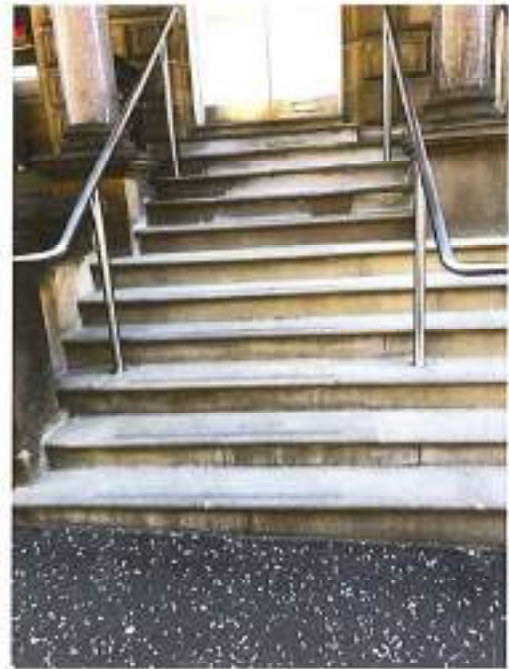


Fig 32: Entrance steps



Fig 33: Entrance steps



Fig 34: Entrance steps



Fig 35: Boundary wall/railing



Fig 36: Boundary wall/railing



Fig 37: Boundary wall/railing



Fig 38: Boundary wall/railing



Fig 39: Boundary wall/railing



Fig 40: Boundary wall/railing



Fig 41: Survey in progress



Fig 42: Parapet at roof level



Fig 43: Overview of roof



Fig 44: Overview of roof



Fig 45: Parapet cope



Fig 46: Precast balustrade sections



Fig 47: Part replacement with concrete



Fig 48: Tap test



Fig 49: All part concrete replacement's ring boss

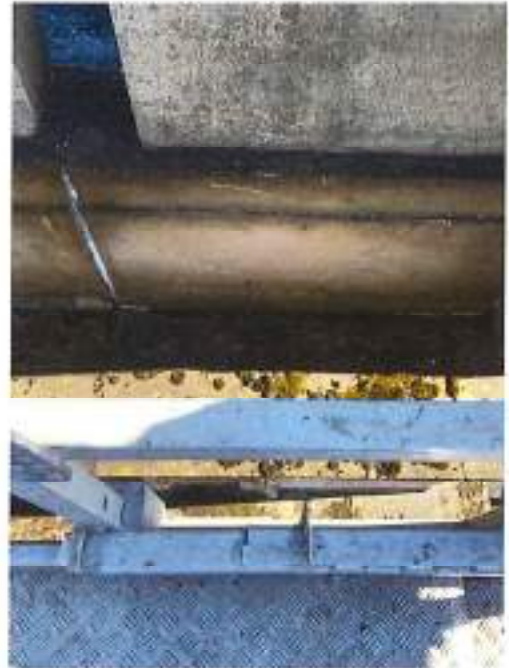


Fig 50: Algae/moss on eaves stringer



Fig 51: Algae/moss on eaves projecting cornice



Fig 52: Corroded dowel in part concrete replacement



Fig 53: Open joints in parapet plinth course



Fig 54: Corroded cramps in parapet copes



Fig 55: Open joints in parapet plinth course



Fig 56: Slipped/moved slates



Fig 57: Overview of roof



Fig 58: Overview of roof



Fig 59: Overview of roof



Fig 60: Part replacement with concrete



Fig 61: Parapet plinth course joints



Fig 62: Tap test in progress Eaves projecting cornice



Fig 63: Underside eaves projecting cornice



Fig 64: 4th floor level



Fig 65: 4th floor cill algae/moss



Fig 66: 4th floor cill tap testing



Fig 67: 4th floor projecting cornice



Fig 68: 4th floor projecting cornice



Fig 69: Small fissure



Fig 70: 4th floor window



Fig 71: eaves level projecting cornice



Fig 72: 4th floor projecting cornice



Fig 73: Underside of 4th floor projecting cornice



Fig 74: Underside of 4th floor projecting cornice



Fig 75: Underside of 4th floor projecting cornice



Fig 76: 3rd floor level



Fig 77: underside of 4th floor projecting cornice



Fig 78: friable stone work



Fig 79: Friable dentil blocks (4th floor projecting cornice)



Fig 80: As per Fig 79



Fig 81: Decorative feature (isolated areas friable)



Fig 82: Friable dentil blocks (4th floor projecting cornice)



Fig 83: Friable stone under 4th floor projecting cornice



Fig 84: Window require decoration



Fig 85: Bird deterrent spikes 3rd floor windows



Fig 86: As per Fig 85

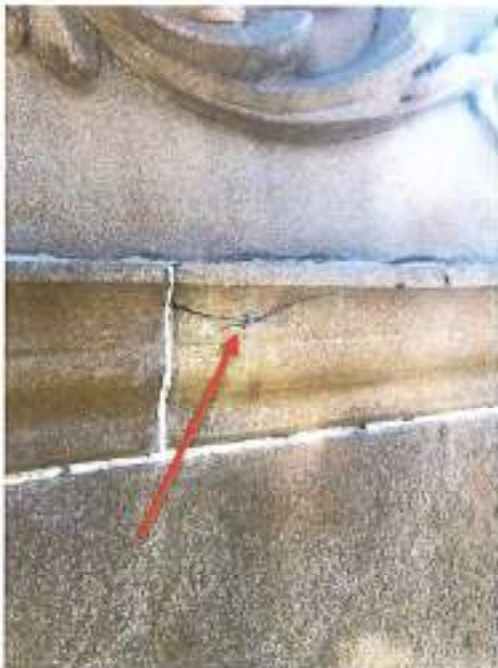


Fig 87: Cracking caused by bird deterrent fixings 3rd floor stringer



Fig 88: As per Fig 87



Fig 89: Bird deterrent



Fig 90: Area of pointing required 1st floor level



Fig 91: Overview of 2nd floor hoods



Fig 92: Tap testing 2nd floor hoods



Fig 93: Friable cill 3rd floor level



Fig 94: Cracked lintel 2nd floor level



Fig 95: Cracked lintel 2nd floor level



Fig 96: 2nd floor pointing required



Fig 97: 2nd floor hoods



Fig 98: 2nd floor hood pointing required



Fig 99: Area of spalling repairs 2nd floor

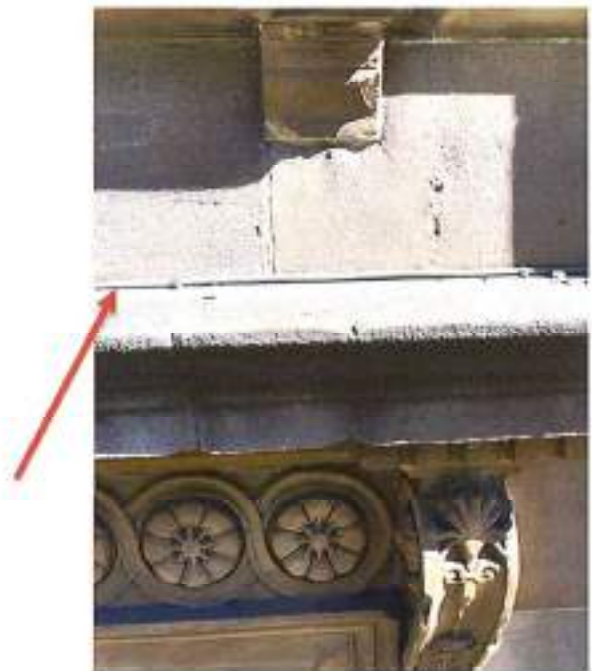


Fig 100: 1st floor (Street lighting cable)



Fig 101: 1st floor decorative lintel



Fig 102: New cill 2nd floor



Fig 103: New cill/corbel 2nd floor



Fig 104: Portico parapet



Fig 105: Corroded cramps parapet cope (Portico)



Fig 106: Corroded cramps parapet cope (Portico)



Fig 107: Portico roof behind parapet



Fig 108: 1st floor window decoration required



Fig 109: Corroded cramps parapet cope (Portico)



Fig 110: Behind parapet of portico



Fig 111: Ground floor window detail

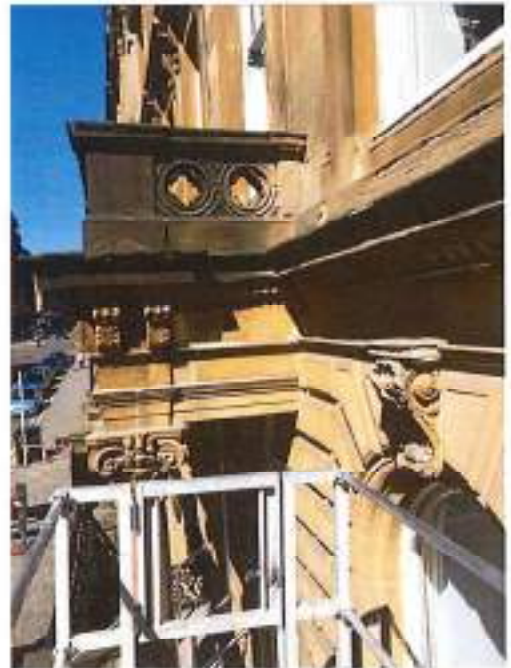


Fig 112: Ground floor level



Fig 113: Ground floor level



Fig 114: Crack ground floor level



Fig 115: Egg & dart mould GL friable



Fig 116: Corbel Ground floor windows



Fig 117: Ground floor window detail. (Spalling)

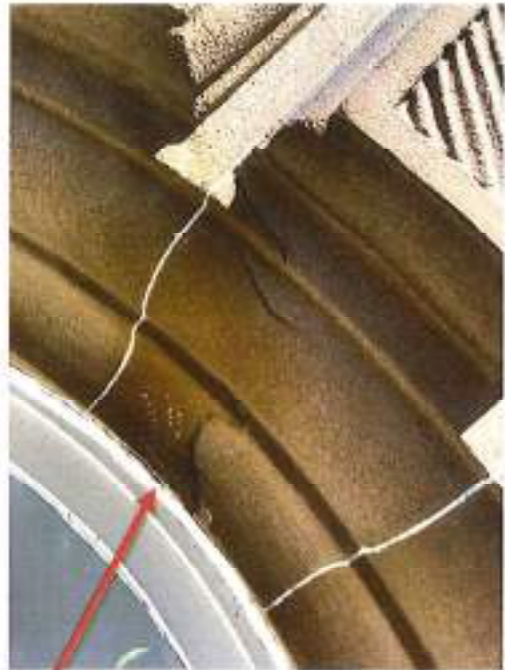


Fig 118: Ground floor window detail. (Spalling)



Fig 119: Movement to centre arch detail (Keystone)



Fig 120: Portico



Fig 121: Neighbouring wall



Fig 122: Entrance steps



Fig 123: Graffiti at basement entrance



Fig 124: Debris removed during survey 16kg in weight